

**CHAPTER 52**

**DOORS AND WINDOWS**

<i>Figure</i>	<i>Title</i>	<i>Page</i>
52-1	Forward Door Assembly . . . . .	52.0
52-5	Forward Door Installation . . . . .	52.4
52-7	Aft Door Assembly . . . . .	52.6
52-11	Aft Door Installation . . . . .	52.10
52-13	Baggage Door Installation . . . . .	52.12
52-17	Windshield Installation – Standard (Acrylic) . . . . .	52.16
52-21	Windshield Installation – Impact Resistant (Polycarbonate) . . . . .	52.20
52-25	Windshield Installation – Impact Resistant (Polycarbonate) . . . . .	52.24
52-27	Windshield Installation – Impact Resistant (Polycarbonate) with Wire Strike Provisions . . . . .	52.26

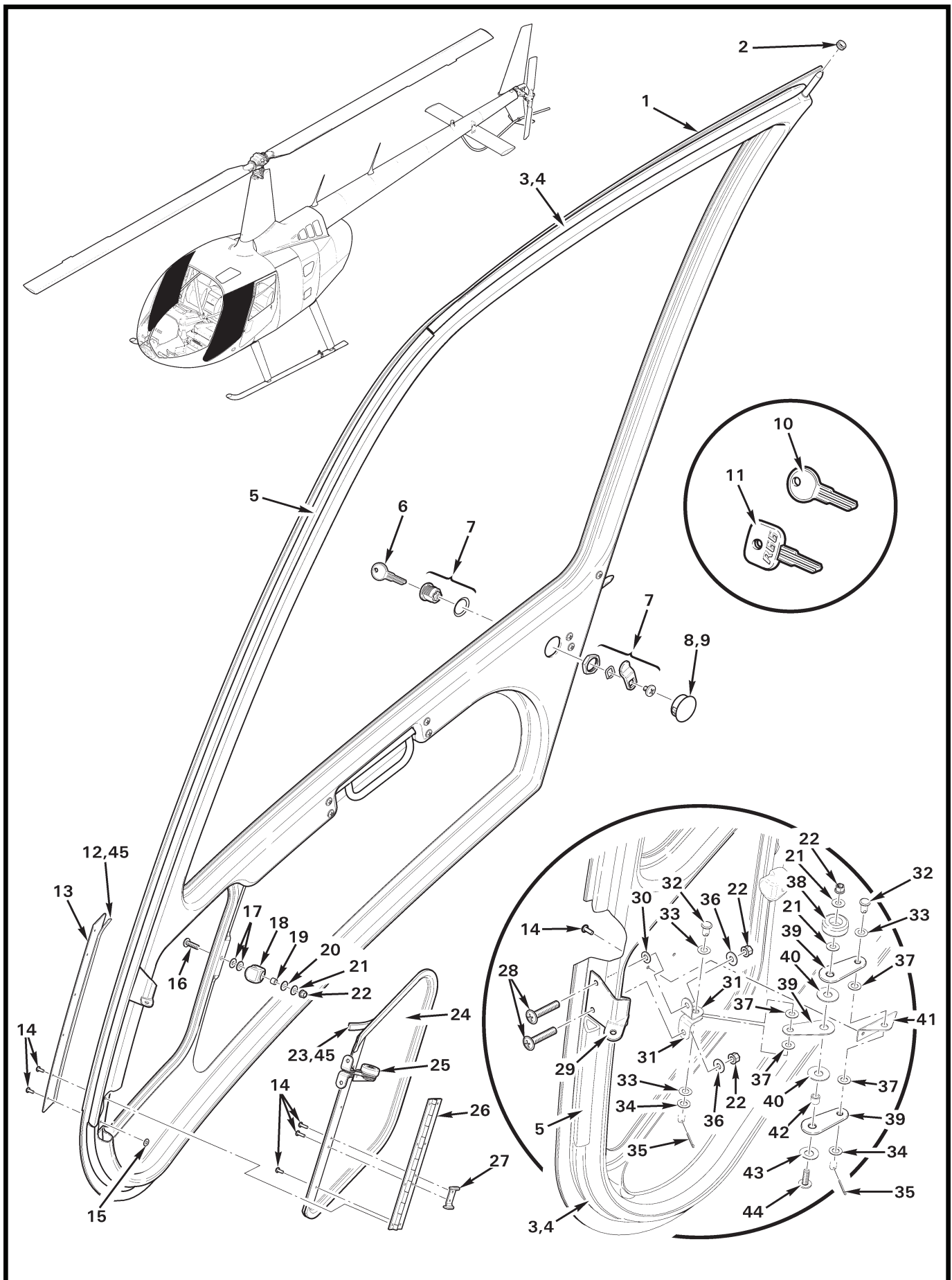


FIGURE AND INDEX NUMBER	PART NUMBER	DESCRIPTION	PARTS AVAIL	QTY PER ASSY
<b>FORWARD DOOR ASSEMBLY</b>				
52-1-1	C026-016	Door Assembly (RH, clear; Incl items 2 thru 30, and 36) . . . .	X	1
	C026-015	Door Assembly (LH, clear [not shown]; Incl items 2 thru 28, 34, and 43) . . . . .	X	1
	C026-026	Door Assembly (RH, tinted; Incl items 2 thru 28, 34, and 43)	X	1
	C026-025	Door Assembly (LH, tinted [not shown]; Incl items 2 thru 28, 34, and 43) . . . . .	X	1
	C026-036	Door Assembly (RH, bubble, clear; Incl items 2 thru 28, 34, and 43) . . . . .	X	1
	C026-035	Door Assembly (LH, bubble, clear [not shown]; Incl items 2 thru 28, 34, and 43) . . . . .	X	1
	C026-046	Door Assembly (RH, bubble, tinted; Incl items 2 thru 28, 34, and 43) . . . . .	X	1
	C026-045	Door Assembly (LH, bubble, tinted [not shown]; Incl items 2 thru 28, 34, and 43) . . . . .	X	1
	C026-006	Door Assembly (RH, large bubble, clear; Incl items 2 thru 30, and 36) . . . . .	X	1
	C026-005	Door Assembly (LH, large bubble, clear [not shown]; Incl items 2 thru 28, 34, and 43) . . . . .	X	1
2	NAS557-4B	Grommet . . . . .	X	1
3	A226-2	Seal (install using item 4) . . . . .	X	A/R
4	B270-18	Adhesive . . . . .	X	A/R
5	A226-6	Seal (forward door edge, self adhesive) . . . . .	X	A/R
6	D768-8	Key (metal) . . . . .	X	1
7	A556-3	Lock (RH or LH) . . . . .	X	1
	D768-7	Lock Set (Ref; [3] A556-3 locks, [2] D768-8 keys, and [1] F661-2 switch)		
8	2713	Hole Plug . . . . .	X	1
9	B270-9	Adhesive . . . . .	X	A/R
10	R8096	Key – Duplicate (specify ship S/N and “PK” numbers when ordering) . . . . .	X	1
11	R8428	Key – Blank (black plastic-coated “R66” logo) . . . . .	X	1
12	A226-3	Seal (install using item 45) . . . . .	X	A/R
13	C682-3	Barrier . . . . .	X	1
14	MS20470AD3	Rivet . . . . .	X	13
15	NAS1149FN232P	Washer . . . . .	X	2
16	AN525-832R10	Screw . . . . .	X	1
17	NAS1149FN816P	Washer (or NAS1149FN832P as required for shimming this location) . . . . .	X	A/R

NOTES

Continues

FIGURE AND INDEX NUMBER	PART NUMBER	DESCRIPTION	PARTS AVAIL	QTY PER ASSY
FORWARD DOOR ASSEMBLY (Cont'd)				
52-1-18	C285-1	Knob . . . . .	X	1
19	C130-5	Spacer . . . . .	X	1
20	U216-0100-S	Spring Washer . . . . .	X	1
21	NAS1149FN816P	Washer . . . . .	X	3
22	MS21042L08	Nut . . . . .	X	4
23	A226-7	Seal (install using item 45) . . . . .	X	A/R
24	C425-10	Door – Vent (RH) . . . . .	X	1
	C425-9	Door – Vent (LH, not shown) . . . . .	X	1
25	A425-17	Arm Assembly (Incl items 21, 22, 31 thru 35, and 37 thru 44) . . . . .	X	1
26	C425-5	Hinge . . . . .	X	1
27	B242-2	Stop . . . . .	X	1
28	AN525-832R16	Screw . . . . .	X	2
29	D574-12	Bracket Weldment (RH) . . . . .	X	1
	D574-11	Bracket Weldment (LH, not shown) . . . . .	X	1
30	A141-19	Washer . . . . .	X	1
31	A425-19	Clip . . . . .	X	2
32	MS20392-2C7	Pin . . . . .	X	2
33	U190-0090S	Spring Washer . . . . .	X	3
34	NAS1149F0332P	Washer . . . . .	X	2
35	MS24665-132	Cotter Pin . . . . .	X	2
36	NAS1149FN832P	Washer . . . . .	X	2
37	A141-8	Washer . . . . .	X	4
38	A431-1	Knob . . . . .	X	1
39	A425-7	Arm . . . . .	X	3
40	A141-7	Washer . . . . .	X	2
41	A425-13	Angle . . . . .	X	1
42	A105-7	Journal . . . . .	X	1
43	U250-0185	Spring Washer . . . . .	X	1
44	AN525-832R8	Screw . . . . .	X	1
45	B270-8qt	Adhesive . . . . .	X	A/R

NOTES

Intentionally Blank

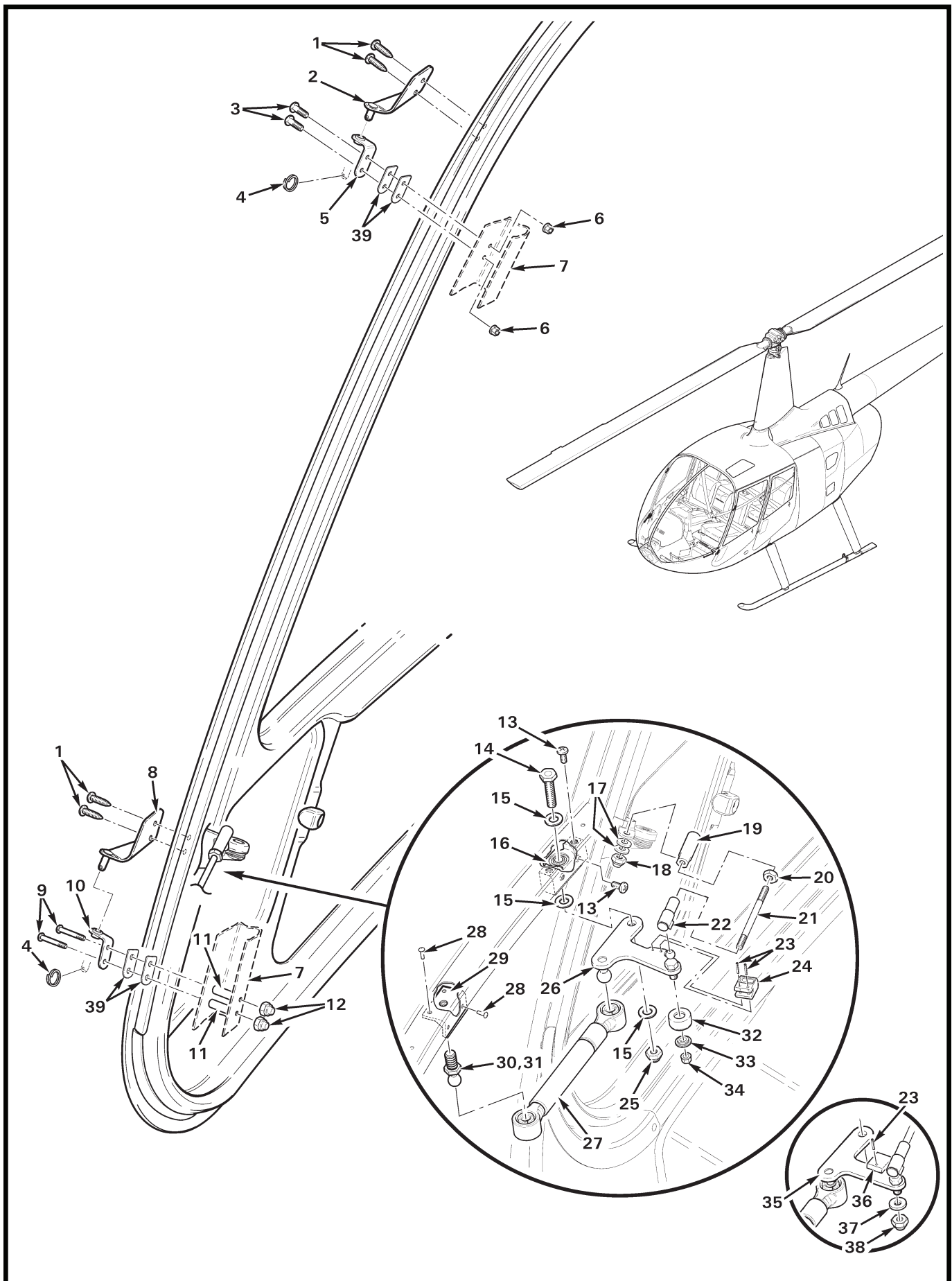


FIGURE AND INDEX NUMBER	PART NUMBER	DESCRIPTION	PARTS AVAIL	QTY PER ASSY
<b>FORWARD DOOR INSTALLATION</b>				
52-5-1	MS51861-37C	Screw . . . . .	X	4
2	F227-4	Hinge Assembly (RH) . . . . .	X	1
	F227-3	Hinge Assembly (LH, not shown) . . . . .	X	1
3	MS27039C0807	Screw (if [0 to 1] of item 39 is installed) . . . . .	X	4
	MS27039C0808	Screw (if [2 to 3] of item 39 is installed) . . . . .	X	4
	MS27039C0809	Screw (if [4] of item 39 is installed) . . . . .	X	4
4	B427-1	Ring . . . . .	X	2
5	C228-4	Hinge Assembly . . . . .	X	1
6	MS21042L08	Nut . . . . .	X	4
7	C238	Jamb (Ref)		
8	F227-2	Hinge Assembly (RH) . . . . .	X	1
	F227-1	Hinge Assembly (LH, not shown) . . . . .	X	1
9	MS27039C0824	Screw (if [0 to 1] of item 39 is installed) . . . . .	X	4
	MS27039C0825	Screw (if [2 to 3] of item 39 is installed) . . . . .	X	4
	MS27039C0826	Screw (if [4] of item 39 is installed) . . . . .	X	4
10	C228-2	Hinge Assembly . . . . .	X	2
11	C130-37	Spacer . . . . .	X	4
12	B340-4	Nut . . . . .	X	4
13	MS27039C0806	Screw . . . . .	X	4
14	NAS6604-12	Bolt . . . . .	X	1
15	NAS1149F0432P	Washer . . . . .	X	3
16	D573-1	Block Assembly . . . . .	X	1
17	NAS1149F0363P	Washer . . . . .	X	3
18	B340-8	Nut . . . . .	X	2
19	D575-3	Ball Joint . . . . .	X	1
20	AN315-3R	Nut . . . . .	X	1
21	D573-4	Rod . . . . .	X	1
22	D575-2	Ball Joint . . . . .	X	1
23	MS16562-4	Spring Pin (one pin on item 36) . . . . .	X	2
24	D573-7	Bumper . . . . .	X	1
25	B340-10	Nut . . . . .	X	1
26	D574-10*	Arm Assembly (RH, includes items 23 and 24) . . . . .	X	1
	D574-9*	Arm Assembly (LH, not shown; includes items 23 and 24) . . . . .	X	1
27	D575-1	Gas Spring . . . . .	X	1
28	MS20470AD4	Rivet . . . . .	X	4

NOTES \* Revision F and prior have one bumper hole, Revision G and subsequent have two bumper holes.

Continues

FIGURE AND INDEX NUMBER	PART NUMBER	DESCRIPTION	PARTS AVAIL	QTY PER ASSY
<b>FORWARD DOOR INSTALLATION (Cont'd)</b>				
52-5-29	D573-3	Block . . . . .	X	1
30	C394-2	Ball Stud (install using item 31) . . . . .	X	1
31	B270-10	Adhesive . . . . .	X	A/R
32	C119-3	Bumper . . . . .	X	1
33	B138-2	Spacer . . . . .	X	1
34	D210-3	Nut . . . . .	X	1
35	D574-9/-10*	Arm Assembly (Ref, revision F and prior. To replace, order item 26.)		
36	D573-6	Bumper (Ref, earlier ships; no longer available.)		
37	NAS1149F0363P	Washer . . . . .	X	1
38	B340-8	Nut . . . . .	X	1
39	C228-7	Shim (install 1 to 4 shims to prevent preloading on doors, [all hinge locations]) . . . . .	X	A/R

NOTES \* Revision F and prior have one bumper hole, Revision G and subsequent have two bumper holes.



Intentionally Blank

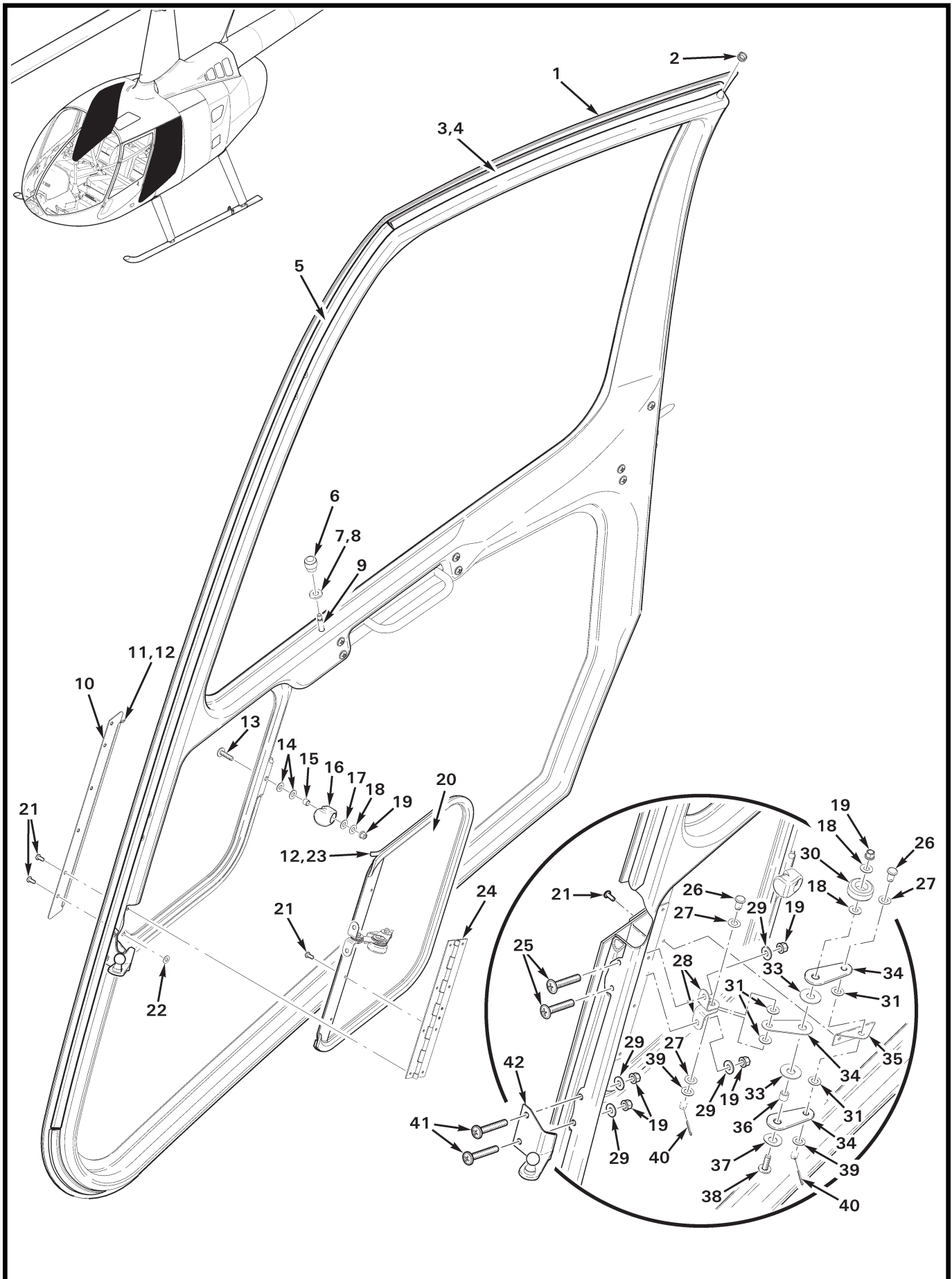


FIGURE AND INDEX NUMBER	PART NUMBER	DESCRIPTION	PARTS AVAIL	QTY PER ASSY
<b>AFT DOOR ASSEMBLY</b>				
52-7-1	C026-018	Door Assembly (RH, clear; Incl items 2 thru 25, 29, 32, 41, and 42) . . . . .	X	1
	C026-017	Door Assembly (LH, clear [not shown]; Incl items 2 thru 25, 29, 32, 41, and 42) . . . . .	X	1
	C026-028	Door Assembly (RH, tinted; Incl items 2 thru 25, 29, 32, 41, and 42) . . . . .	X	1
	C026-027	Door Assembly (LH, tinted [not shown]; Incl items 2 thru 25, 29, 32, 41, and 42) . . . . .	X	1
	C026-038	Door Assembly (RH, bubble, clear; Incl items 2 thru 25, 29, 32, 41, and 42) . . . . .	X	1
	C026-037	Door Assembly (LH, bubble, clear [not shown]; Incl items 2 thru 25, 29, 32, 41, and 42) . . . . .	X	1
	C026-048	Door Assembly (RH, bubble, tinted; Incl items 2 thru 25, 29, 32, 41, and 42) . . . . .	X	1
	C026-047	Door Assembly (LH, bubble, tinted [not shown]; Incl items 2 thru 25, 29, 32, 41, and 42) . . . . .	X	1
2	NAS557-4B	Grommet . . . . .	X	1
3	A226-2	Seal (install using item 4) . . . . .	X	A/R
4	B270-18	Adhesive . . . . .	X	A/R
5	A226-6	Seal (forward door edge, self adhesive) . . . . .	X	A/R
6	A431-2	Knob . . . . .	X	1
7	C26005	Washer (install using item 8) . . . . .	X	1
8	B270-9	Adhesive . . . . .	X	A/R
9	C544-1	Pin (Ref)		
10	C682-2	Barrier . . . . .	X	1
11	A226-3	Seal (install using item 12) . . . . .	X	A/R
12	B270-8qt	Adhesive . . . . .	X	A/R
13	AN525-832R10	Screw . . . . .	X	1
14	NAS1149FN816P	Washer (or NAS1149FN832P for shimming) . . . . .	X	A/R
15	C130-5	Spacer . . . . .	X	1
16	C285-1	Knob . . . . .	X	1
17	U216-0100-S	Spring Washer . . . . .	X	1
18	NAS1149FN816P	Washer . . . . .	X	3
19	MS21042L08	Nut . . . . .	X	3
20	C425-12	Door – Vent (RH) . . . . .	X	1
	C425-11	Door – Vent (LH, not shown) . . . . .	X	1
21	MS20470AD3	Rivet . . . . .	X	12

NOTES

Continues

FIGURE AND INDEX NUMBER	PART NUMBER	DESCRIPTION	PARTS AVAIL	QTY PER ASSY
<b>AFT DOOR ASSEMBLY (Cont'd)</b>				
52-7-22	NAS1149FN232P	Washer . . . . .	X	2
23	A226-7	Seal (install using item 12) . . . . .	X	A/R
24	C425-5	Hinge . . . . .	X	1
25	MS24694-S11	Screw . . . . .	X	2
26	MS20392-2C7	Pin . . . . .	X	2
27	U190-0090S	Spring Washer . . . . .	X	3
28	A425-19	Clip . . . . .	X	2
29	NAS1149FN832P	Washer . . . . .	X	4
30	A431-1	Knob . . . . .	X	1
31	A141-8	Washer . . . . .	X	4
32	A425-17	Arm Assembly (Incl items 18, 19, 26 thru 28, 30, 31, and 33 thru 40) . . . . .	X	1
33	A141-7	Washer . . . . .	X	2
34	A425-7	Arm . . . . .	X	3
35	A425-13	Angle . . . . .	X	1
36	A105-7	Journal . . . . .	X	1
37	U250-0185	Spring Washer . . . . .	X	1
38	AN525-832R8	Screw . . . . .	X	1
39	NAS1149F0332P	Washer . . . . .	X	2
40	MS24665-132	Cotter Pin . . . . .	X	2
41	AN525-832R16	Screw . . . . .	X	2
42	C393-2	Bracket (RH door) . . . . .	X	1
	C393-1	Bracket (LH door; not shown) . . . . .	X	1

NOTES

Intentionally Blank

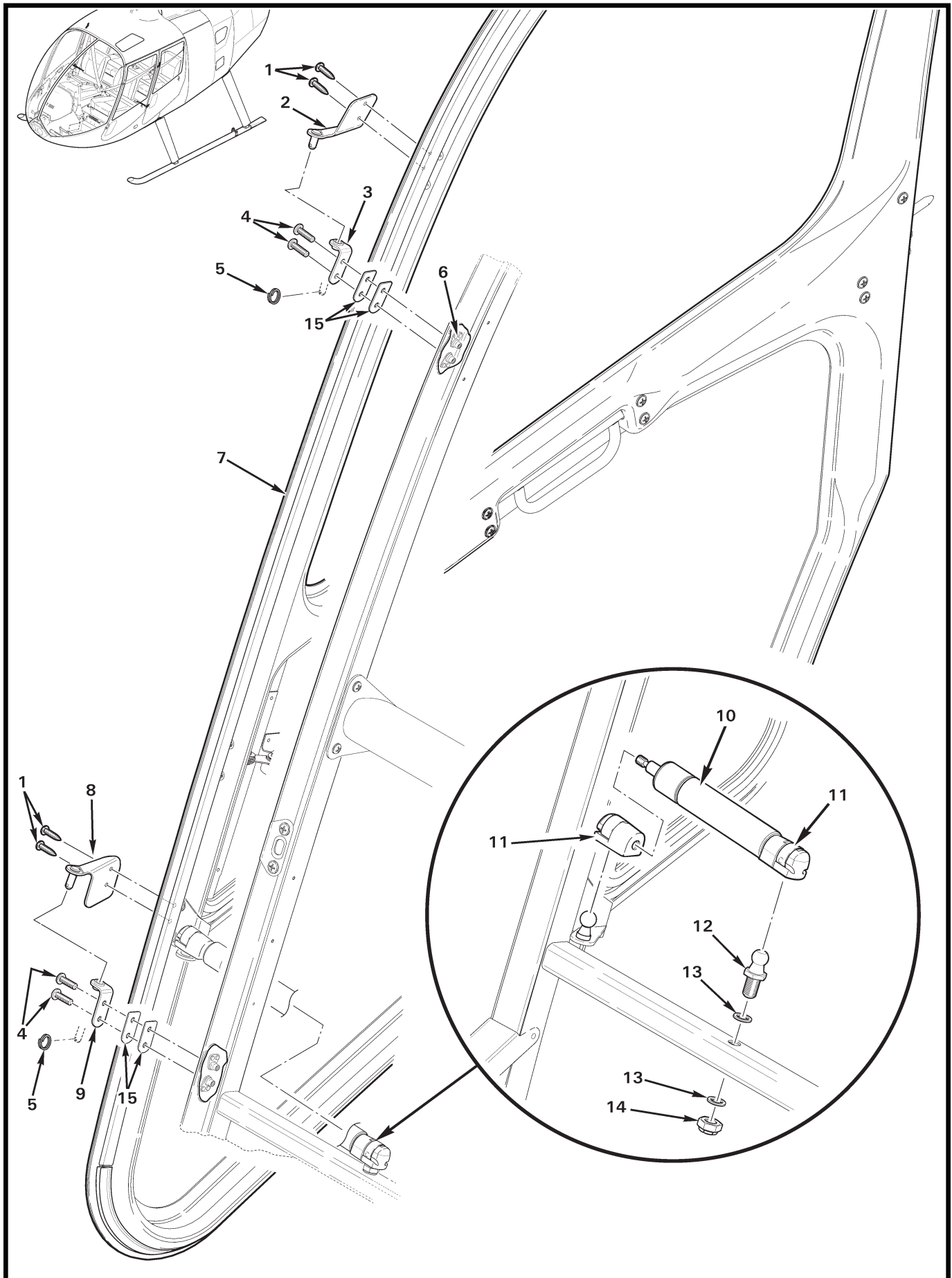


FIGURE AND INDEX NUMBER	PART NUMBER	DESCRIPTION	PARTS AVAIL	QTY PER ASSY
<b>AFT DOOR INSTALLATION</b>				
52-11-1	MS51861-37C	Screw . . . . .	X	4
2	C389-4	Hinge Assembly (RH, upper) . . . . .	X	1
	C389-3	Hinge Assembly (LH, upper; not shown)	X	1
3	A228-1	Hinge (upper) . . . . .	X	1
4	MS27039C0809	Screw (if [0 to 1] of item 15 is installed) . . . . .	X	4
	MS27039C0810	Screw (if [2 to 3] of item 15 is installed) . . . . .	X	4
	MS27039C0811	Screw (if [4] of item 15 is installed) . . . . .	X	4
5	B427-1	Ring . . . . .	X	2
6	MS21086L08	Nutplate (Ref)		
7	C026	Aft Door Assembly (Ref)		
8	C389-10	Hinge Assembly (RH, lower) . . . . .	X	1
	C389-9	Hinge Assembly (LH, lower; not shown) . . . . .	X	1
9	A228-2	Hinge (lower) . . . . .	X	1
10	C394-1	Gas Spring (Incl item 11) . . . . .	X	1
11	PC1249-2	End Connector . . . . .	X	2
12	C394-2	Ball Stud . . . . .	X	1
13	C141-15	Washer . . . . .	X	2
14	21FKF-518	Nut . . . . .	X	1
15	C228-7	Shim (install 1 to 4 shims to prevent preloading on doors, [all hinge locations]) . . . . .	X	A/R

NOTES

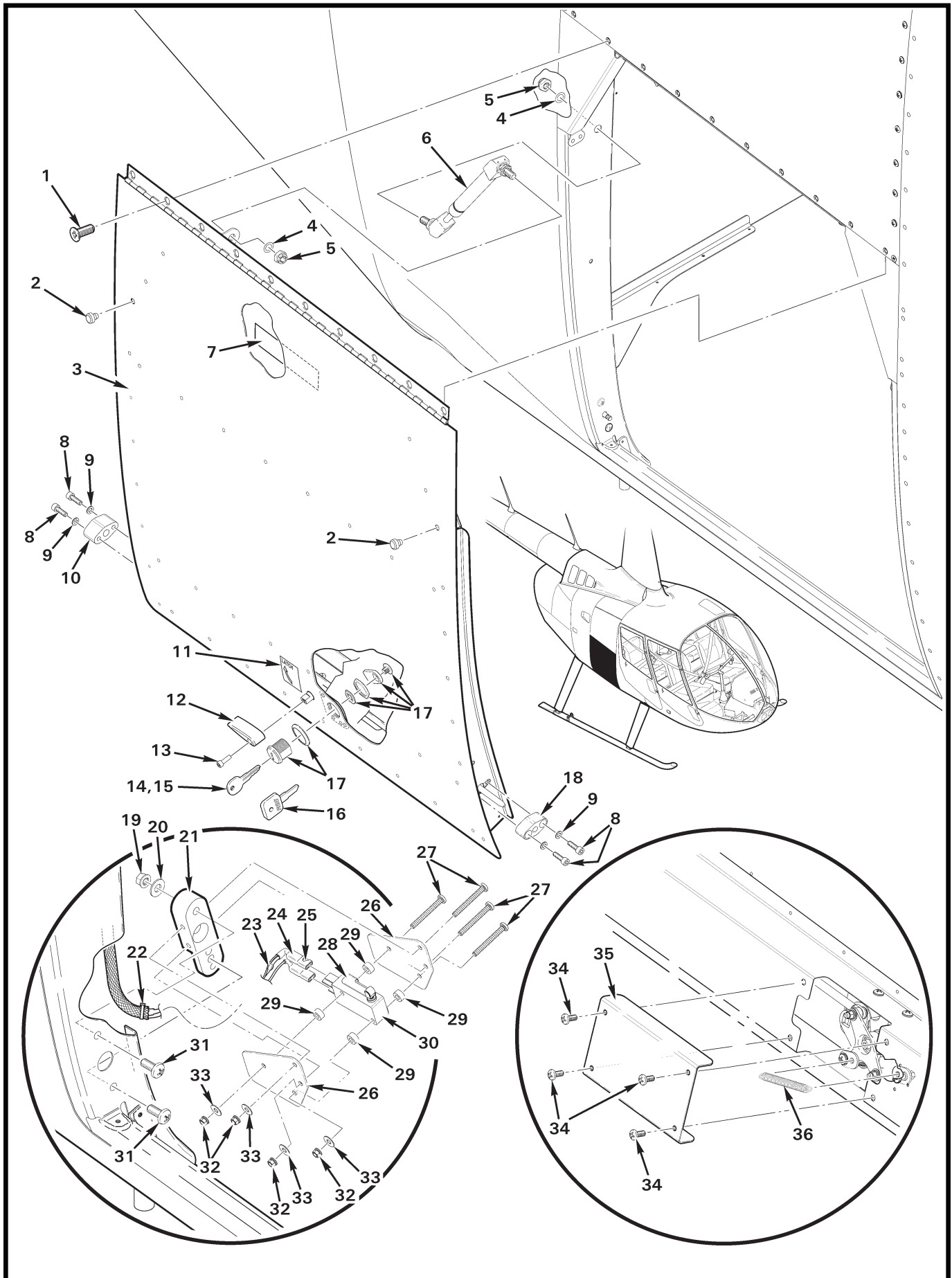




FIGURE AND INDEX NUMBER	PART NUMBER	DESCRIPTION	PARTS AVAIL	QTY PER ASSY
<b>BAGGAGE DOOR INSTALLATION</b>				
52-13-1	MS24694-S4	Screw . . . . .	X	12
2	G405-1	Bumper (black rubber) . . . . .	X	2
3	G900-1	Door Assembly – Baggage (Incl items 8 thru 9, 12, 13, 17, 18, and 34 thru 36) . . . . .	X	1
4	NAS1149F0532P	Washer . . . . .	X	2
5	21FKF-518	Nut . . . . .	X	2
6	G904-1	Spring Assembly . . . . .	X	1
7	F654-7	Decal (baggage load limits) . . . . .	X	1
8	NAS1351-3-10P	Screw . . . . .	X	4
9	NAS620-10L	Washer . . . . .	X	4
10	G903-3	Block . . . . .	X	1
11	F654-8	Decal – “LATCH” (light color ships) . . . . .	X	1
	F654-9	Decal – “LATCH” (dark color ships) . . . . .	X	1
12	G902-5	Knob . . . . .	X	1
13	NAS1352-08-8P	Screw . . . . .	X	1
14	—	Key (metal) . . . . .	O	1
15	R8096	Key – Duplicate (metal; specify ship S/N and “PK” numbers when ordering) . . . . .	X	1
16	D768-4	Key (blank; black plastic-coated “R66” logo) . . . . .	X	1
17	A556-1	Lock Set (set of two; includes item 14[4]) . . . . .	X	1
18	G903-4	Block . . . . .	X	1
19	MS21042L3	Nut . . . . .	X	1
20	NAS1149F0332P	Washer . . . . .	X	1
21	G903-1	Block Assembly . . . . .	X	1
22	MS3367-5-9	Ty-Rap . . . . .	X	1
23	1N4005G	Diode . . . . .	X	1
	B261-2	Splice (not shown) . . . . .	X	1
	B158-103	Heat Shrink . . . . .	X	A/R
24	B158-3	Heat Shrink . . . . .	X	A/R
25	B262-2	Receptacle . . . . .	X	2
26	G903-7	Bracket . . . . .	X	2
27	MS35206-227	Screw . . . . .	X	4
28	JV-5	Actuator . . . . .	X	1
29	A130-14	Spacer . . . . .	X	4
30	D2VW-5L3-1HS	Switch . . . . .	X	1

NOTES

Continues

FIGURE AND INDEX NUMBER	PART NUMBER	DESCRIPTION	PARTS AVAIL	QTY PER ASSY
<b>BAGGAGE DOOR INSTALLATION (Cont'd)</b>				
52-13-31	MS27039C1-07	Screw .....	X	2
32	MS21042L04	Nut .....	X	4
33	NAS1149FN416P	Washer .....	X	4
34	MS27039C0806	Screw .....	X	4
35	G906-2	Cover .....	X	1
36	B774-5	Spring .....	X	1
* * *				
37	KI-207*	R66 Baggage Door Seals Kit (see R66 SL-02) .....	X	A/R

NOTES \* See [www.robinsonheli.com](http://www.robinsonheli.com) for kit contents and instructions.

Intentionally Blank

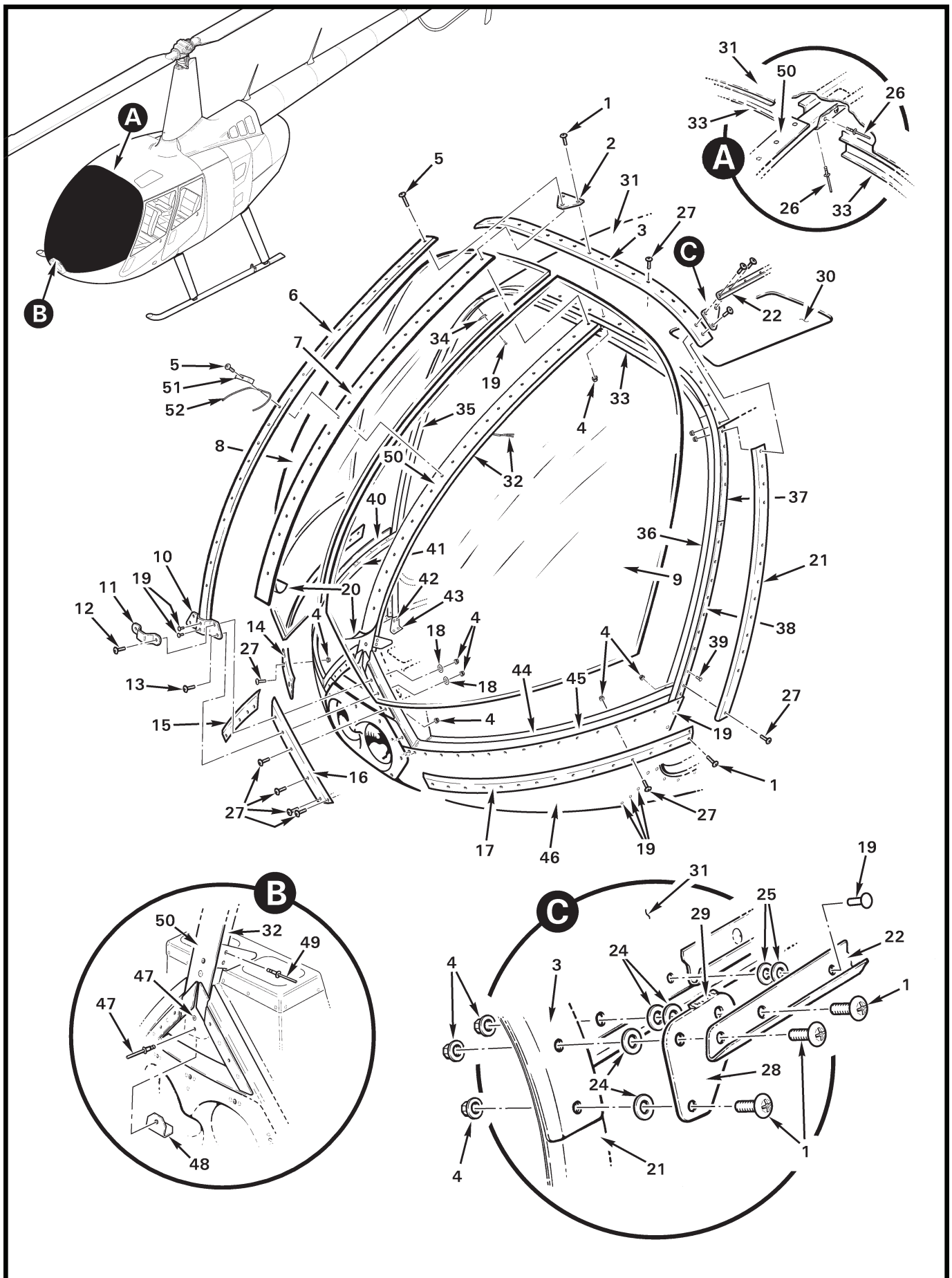


FIGURE AND INDEX NUMBER	PART NUMBER	DESCRIPTION	PARTS AVAIL	QTY PER ASSY
		WINDSHIELD INSTALLATION – STANDARD (ACRYLIC)		
52-17-1	AN526C832R9	Screw (do not substitute MS27039 screws) . . . . .	X	8
2	B409-5	Gusset . . . . .	X	1
3	F238-4	Retainer (apply item 29 to edges) . . . . .	X	1
4	MS21042L08	Nut . . . . .	X	94
5	AN526C832R12	Screw (do not substitute MS27039 screws) . . . . .	X	22
6	F367-12	Stiffener . . . . .	X	1
7	F367-10	Retainer . . . . .	X	1
8	F274-2*	Windshield** (Acrylic; RH, clear) . . . . .	X	1
	F274-4*	Windshield** (Acrylic; RH, tinted) . . . . .	X	1
9	F274-1*	Windshield** (Acrylic; LH, clear) . . . . .	X	1
	F274-3*	Windshield** (Acrylic; LH, tinted) . . . . .	X	1
10	C366-8	Retainer . . . . .	X	1
11	C366-5	Bracket . . . . .	X	1
12	MS27039C0810	Screw . . . . .	X	2
13	MS27039C0808	Screw . . . . .	X	2
14	F367-6*	Retainer (RH) . . . . .	X	1
15	F367-8*	Retainer (RH) . . . . .	X	1
16	F367-7*	Retainer (LH) . . . . .	X	1
17	F367-5*	Retainer (LH) . . . . .	X	1
18	NAS1149FN832P	Washer . . . . .	X	4
19	MS20470AD4	Rivet . . . . .	X	26
20	C367-11	Tape . . . . .	X	A/R
21	C238-27*	Retainer (LH) . . . . .	X	1
	C238-28*	Retainer (RH; not shown) . . . . .	X	1
22	F230-8	Rain Gutter (RH; apply item 29 to edges) . . . . .	X	1
	F230-7	Rain Gutter (LH; apply item 29 to edges) . . . . .	X	1
23	B270-13.100Z	Sealant (10.3 oz. cartridge) . . . . .	X	A/R
24	NAS1149FN832P	Washer . . . . .	X	A/R
25	NAS620-5	Washer . . . . .	X	A/R
26	NAS9301B-4-02	Rivet (blind) . . . . .	X	5
27	AN526C832R8	Screw . . . . .	X	82
28	D805-2	Restraint (LH and RH. Use item 29 to fill gap between items 22, 28, and 31.) . . . . .	X	2
29	B270-1	Sealant (2-oz tube) . . . . .	X	A/R
30	C273-3	Window (clear acrylic) . . . . .	X	1

NOTES \* Install using item 23.  
 \*\* See Figure 99-7 for shipping box.

Continues

FIGURE AND INDEX NUMBER	PART NUMBER	DESCRIPTION	PARTS AVAIL	QTY PER ASSY
<b>WINDSHIELD INSTALLATION – STANDARD (ACRYLIC) (Cont'd)</b>				
52-17-31	F273-1	Roof (Incl item 30) . . . . .	X	1
32	F090-5	Bow Assembly (includes wires) . . . . .	X	1
33	F087-2	Frame (forward; roof) . . . . .	X	1
34	C211-3	Gusset (LH and RH) . . . . .	X	2
35	C238-4	Door Jamb – RH (attach to cabin using items 19, 39, 42, and 43) . . . . .	X	1
36	C238-3	Door Jamb – LH (attach to cabin using items 19, 39, 42, and 43) . . . . .	X	1
37	C238-34	Spacer (LH and RH, 0.125 in. thick polycarbonate. Attach to items 35 and 36 using item 39.) . . . . .	X	2
38	D661-1	Spacer (LH and RH, 0.125 in. thick polycarbonate. Attach to items 35 and 36 using item 39.) . . . . .	X	2
39	MS20426AD3	Rivet (flush) . . . . .	X	56
40	F367-2	Retainer (RH) . . . . .	X	1
41	F090-2	Frame (RH; attach with item 40 to chin [item 46] using item 39)	X	1
42	MS20470AD3	Rivet (flush) . . . . .	X	8
43	A414-1	Angle (LH) . . . . .	X	1
	A414-2	Angle (RH; not shown) . . . . .	X	1
44	F090-1	Frame (LH; attach with item 40 to chin [item 46] using item 39)	X	1
45	F367-1	Retainer (LH) . . . . .	X	1
46	F272-1	Chin . . . . .	X	1
47	NAS9301B-4-03	Rivet (blind) . . . . .	X	2
48	C366-6	Cap . . . . .	X	1
49	NAS9301B-4-02	Rivet (blind; or NAS9301B-4-03 as required) . . . . .	X	4
50	F367-9	Retainer . . . . .	X	1
51	B295-1	Clip (install 10th hole from bottom) . . . . .	X	1
52	—	Yaw String (Ref; yarn, white acrylic, 0.10-inch dia., 3-inch length each side of clip. Source locally.)		

NOTES

Intentionally Blank

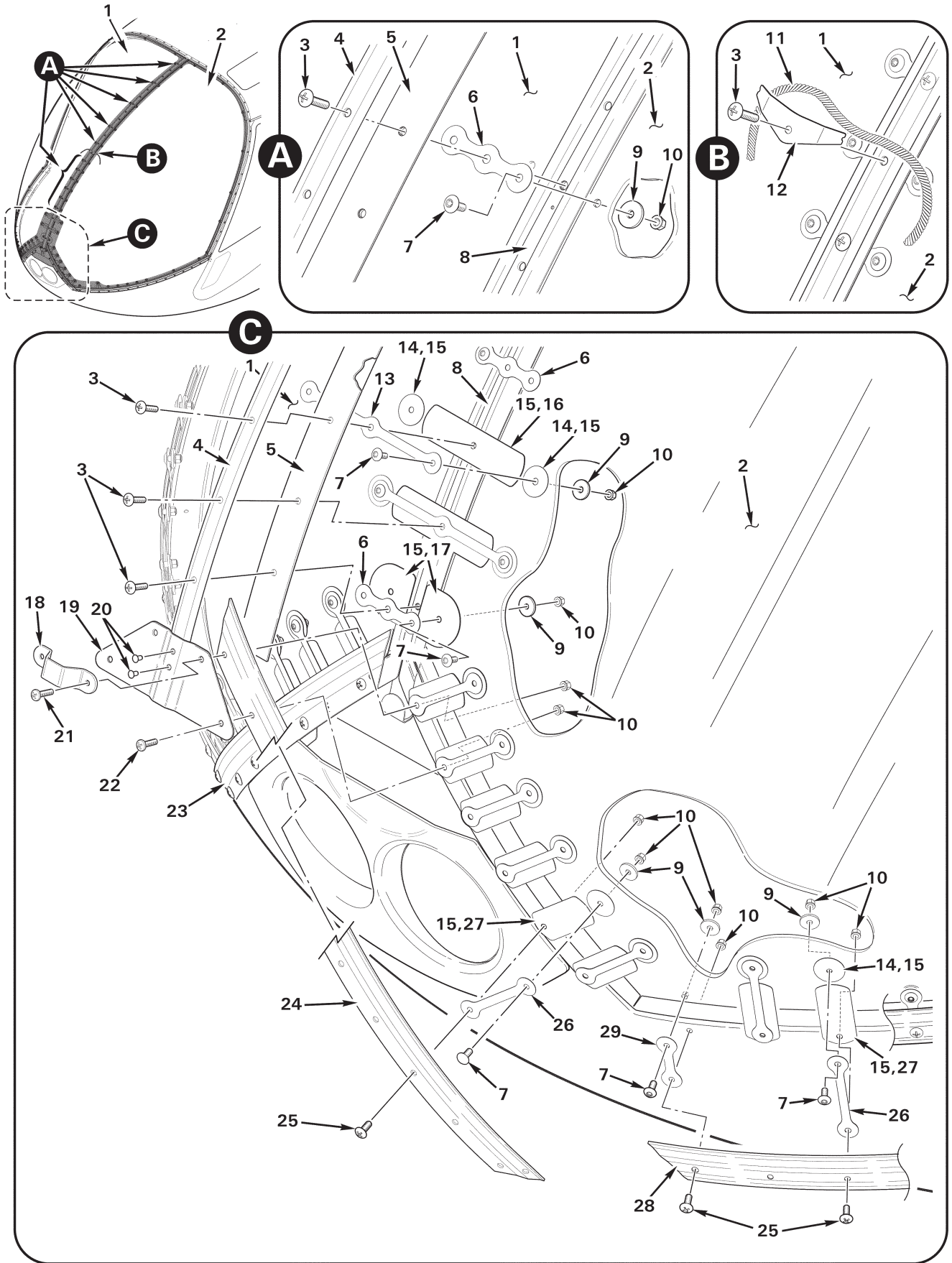




FIGURE AND INDEX NUMBER	PART NUMBER	DESCRIPTION	PARTS AVAIL	QTY PER ASSY
		<b>WINDSHIELD INSTALLATION – IMPACT-RESISTANT (POLYCARBONATE)</b>		
52-21-1	F274-6*	Windshield** (Polycarbonate; RH, clear. Also order item 30, as required.) . . . . .	X	1
	F274-8*	Windshield** (Polycarbonate; RH, tinted. Also order item 30, as required.) . . . . .	X	1
2	F274-5*	Windshield** (Polycarbonate; LH, clear. Also order item 30, as required.) . . . . .	X	1
	F274-7*	Windshield** (Polycarbonate; LH, tinted. Also order item 30, as required.) . . . . .	X	1
3	AN526C832R12	Screw (do not substitute MS27039 screws) . . . . .	X	23
4	F467-12***	Stiffener (Ref)		
5	F367-10***	Retainer (Ref)		
6	G367-2	Tie . . . . .	X	12
7	B526-6	Screw (do not substitute MS27039 screws) . . . . .	X	74
8	F367-9***	Retainer (Ref)		
9	C141-25	Washer . . . . .	X	74
10	MS21042L08	Nut . . . . .	X	74
11	—	Yaw String (Ref; yarn, white acrylic, source locally. 0.10-inch dia., 3-inch length each side of clip.)		
12	B295-2	Clip (install 10th screw from bottom) . . . . .	X	1
13	G367-11	Tie . . . . .	X	2
14	G367-15*	Pad . . . . .	X	20
15	B270-26	Sealant . . . . .	X	A/R
16	G367-13*	Tab . . . . .	X	2
17	G367-14*	Pad . . . . .	X	2
18	C366-5***	Bracket (Ref)		
19	C366-8***	Retainer (Ref)		
20	MS20470AD4***	Rivet (Ref)		
21	MS27039C0810***	Screw (Ref)		
22	MS27039C0809	Screw . . . . .	X	2
23	F367-8***	Retainer (Ref)		
24	F367-7***	Retainer (Ref)		
25	AN526C832R8	Screw (Ref)		
26	G367-10	Strap . . . . .	X	16
27	G367-12*	Tab . . . . .	X	16
28	F367-5***	Retainer (LH, Ref)		
	F367-6***	Retainer (RH, Ref)		

NOTES \* Install using item 15.  
 \*\* See Figure 99-7 for shipping box.  
 \*\*\* See Figure 52-17.

Continues



Intentionally Blank

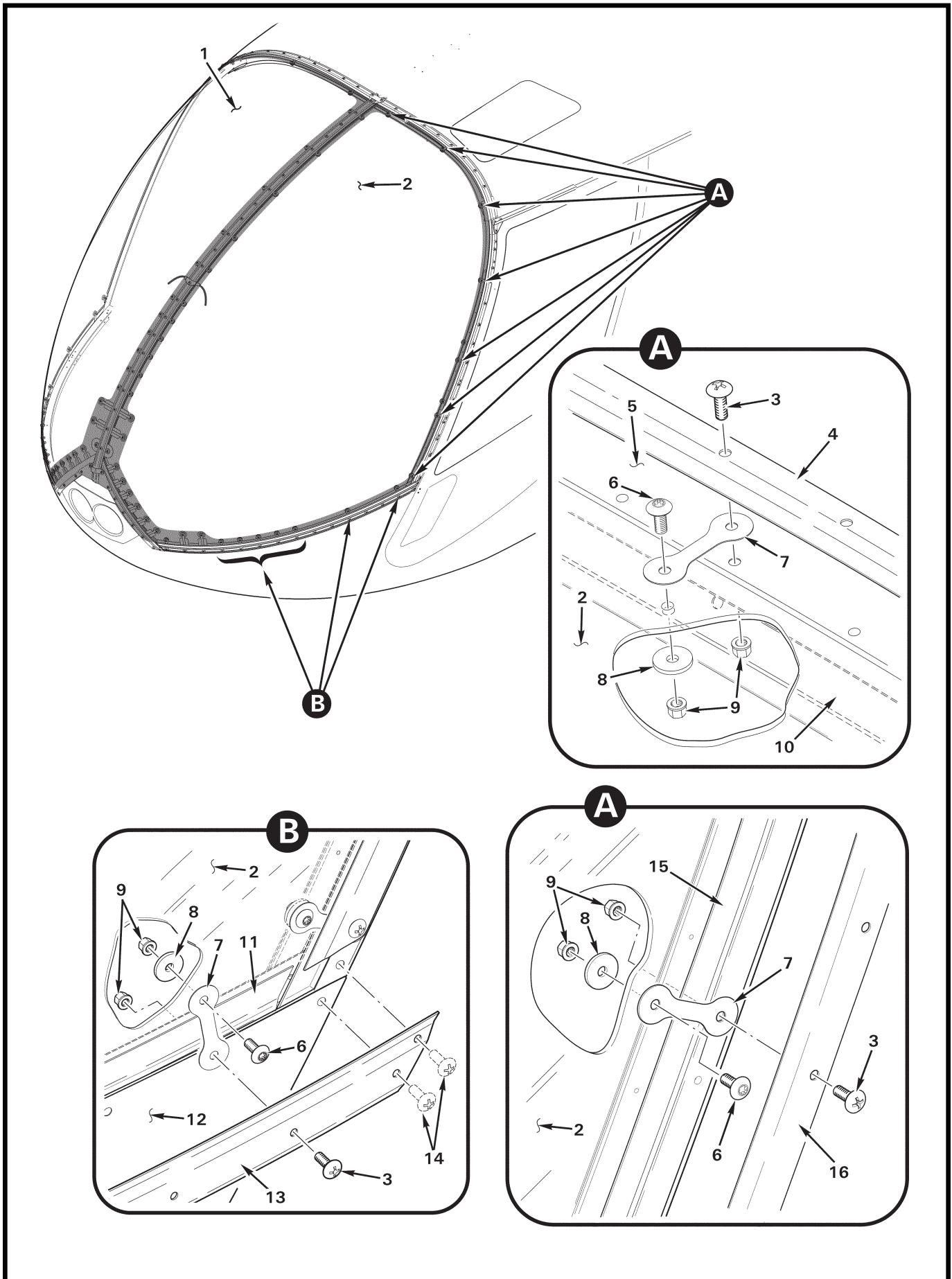


FIGURE AND INDEX NUMBER	PART NUMBER	DESCRIPTION	PARTS AVAIL	QTY PER ASSY
		<b>WINDSHIELD INSTALLATION – IMPACT-RESISTANT (POLYCARBONATE)</b>		
52-25-1	F274-6	Windshield (Ref*; Polycarbonate; RH, clear)		
	F274-8	Windshield (Ref*; Polycarbonate; RH, tinted)		
2	F274-5	Windshield (Ref*; Polycarbonate; LH, clear)		
	F274-7	Windshield (Ref*; Polycarbonate; LH, tinted)		
3	AN526C832R8	Screw (do not substitute MS27039 screws) . . . . .	X	60
4	F238-4	Retainer (Ref**)		
5	F273-1	Roof (Ref**)		
6	B526-6	Screw (do not substitute MS27039 screws) . . . . .	X	30
7	G367-1	Strap . . . . .	X	30
8	C141-25	Washer . . . . .	X	30
9	MS21042L08	Nut . . . . .	X	60
10	F087-2	Frame (forward, roof; Ref**)		
11	F367-1	Retainer (LH, Ref**)		
	F367-2	Retainer (RH, not shown; Ref**)		
12	F272-1	Chin (Ref**)		
13	F367-5	Retainer (LH, Ref**)		
	F367-6	Retainer (LH, not shown; Ref**)		
14	AN526832R9	Screw (Ref**)		
15	C238-3	Door Jamb (LH, Ref**)		
16	C238-27	Retainer (LH, Ref**)		
	C238-28	Retainer (RH, not shown; Ref**)		

NOTES \* See Figure 52-21.  
 \*\* See Figure 52-17.

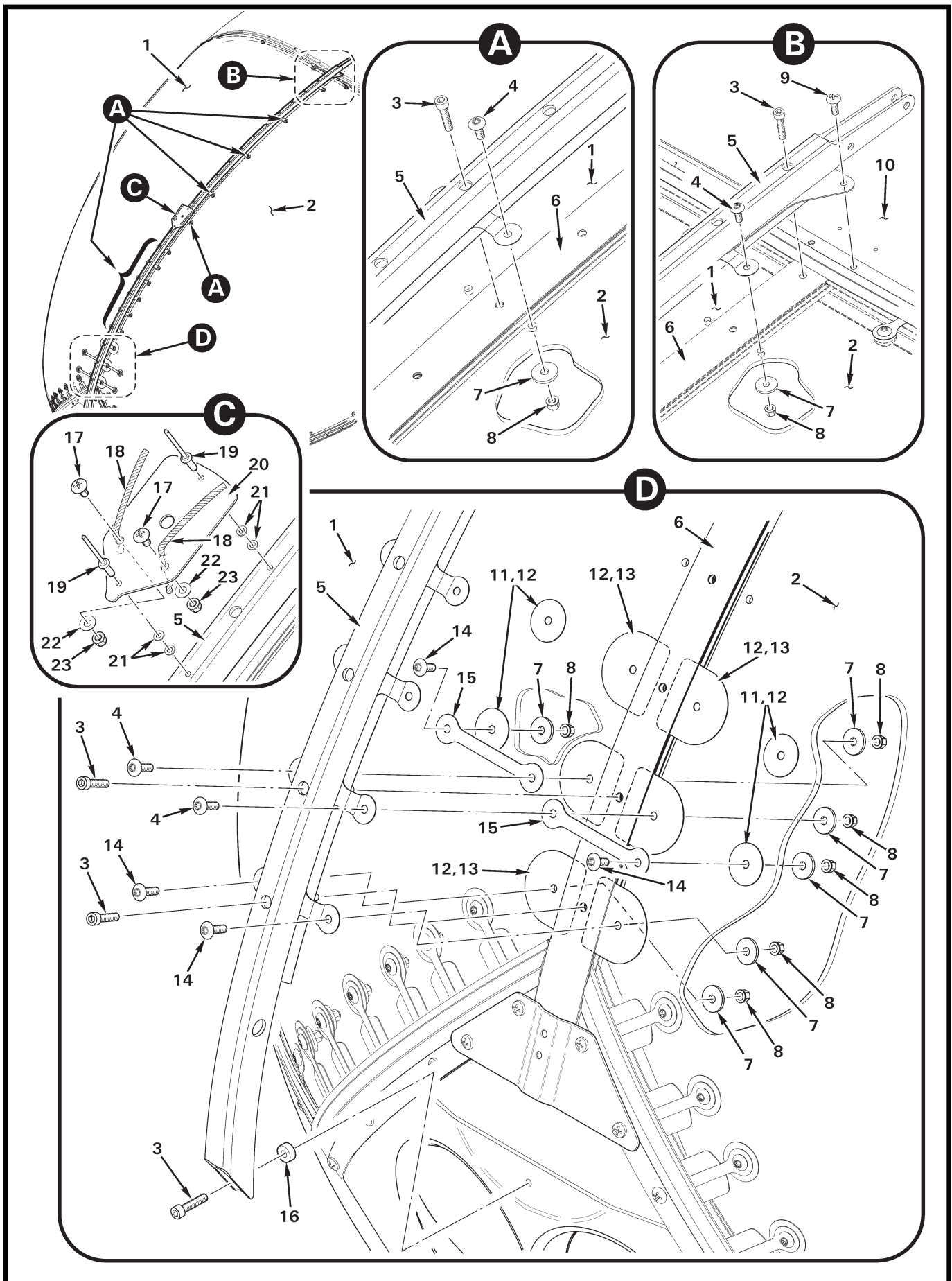


FIGURE AND INDEX NUMBER	PART NUMBER	DESCRIPTION	PARTS AVAIL	QTY PER ASSY
		<b>WINDSHIELD INSTALLATION – IMPACT-RESISTANT (POLYCARBONATE) WITH WIRE STRIKE PROVISIONS</b>		
52-27-1	F274-6	Windshield (Ref*; Polycarbonate; RH, clear)		
	F274-8	Windshield (Ref*; Polycarbonate; RH, tinted)		
2	F274-5	Windshield (Ref*; Polycarbonate; LH, clear)		
	F274-7	Windshield (Ref*; Polycarbonate; LH, tinted)		
3	NAS1352-08-12P	Screw . . . . .	X	24
4	B526-8	Screw (do not substitute MS27039 screws) . . . . .	X	4
5	G933-2	Bow Assembly . . . . .	X	1
6	G935-2	Retainer (replaces F367-10 retainer) . . . . .	X	1
7	C141-25	Washer . . . . .	X	78
8	MS21042L08	Nut . . . . .	X	78
9	AN526C832R9	Screw (Ref**)		
10	F273-1	Roof (Ref**)		
11	G367-15	Pad (install using item 12) . . . . .	X	4
12	B270-26	Adhesive . . . . .	X	A/R
13	G367-14	Pad (install using item 12) . . . . .	X	6
14	B526-6	Screw (do not substitute MS27039 screws) . . . . .	X	74
15	G367-10	Strap . . . . .	X	20
16	A130-37	Spacer . . . . .	X	1
17	AN526C832R6	Screw . . . . .	X	2
18	–	Yaw String (Ref; yarn, white acrylic, 0.10-inch dia., 1.9-inch length from screw, trim yarn 0.06-inch max beyond washer. Source locally.)		
19	B204-2	Rivet (blind) . . . . .	X	2
20	G935-7	Plate . . . . .	X	1
21	NAS620-5	Washer ([2] with each item 18 between item 17 and item 5)	X	4
22	NAS1149FN816P	Washer . . . . .	X	2
23	MS21042L08	Nut . . . . .	X	2

NOTES \* See Figure 52-21.  
 \*\* See Figure 52-17.

Intentionally Blank