

CHAPTER 62

MAIN ROTOR

<i>Figure</i>	<i>Title</i>	<i>Page</i>
62-1	Main Rotor Blade Assembly . . . . .	62.0
62-3	Main Rotor Hub . . . . .	62.2

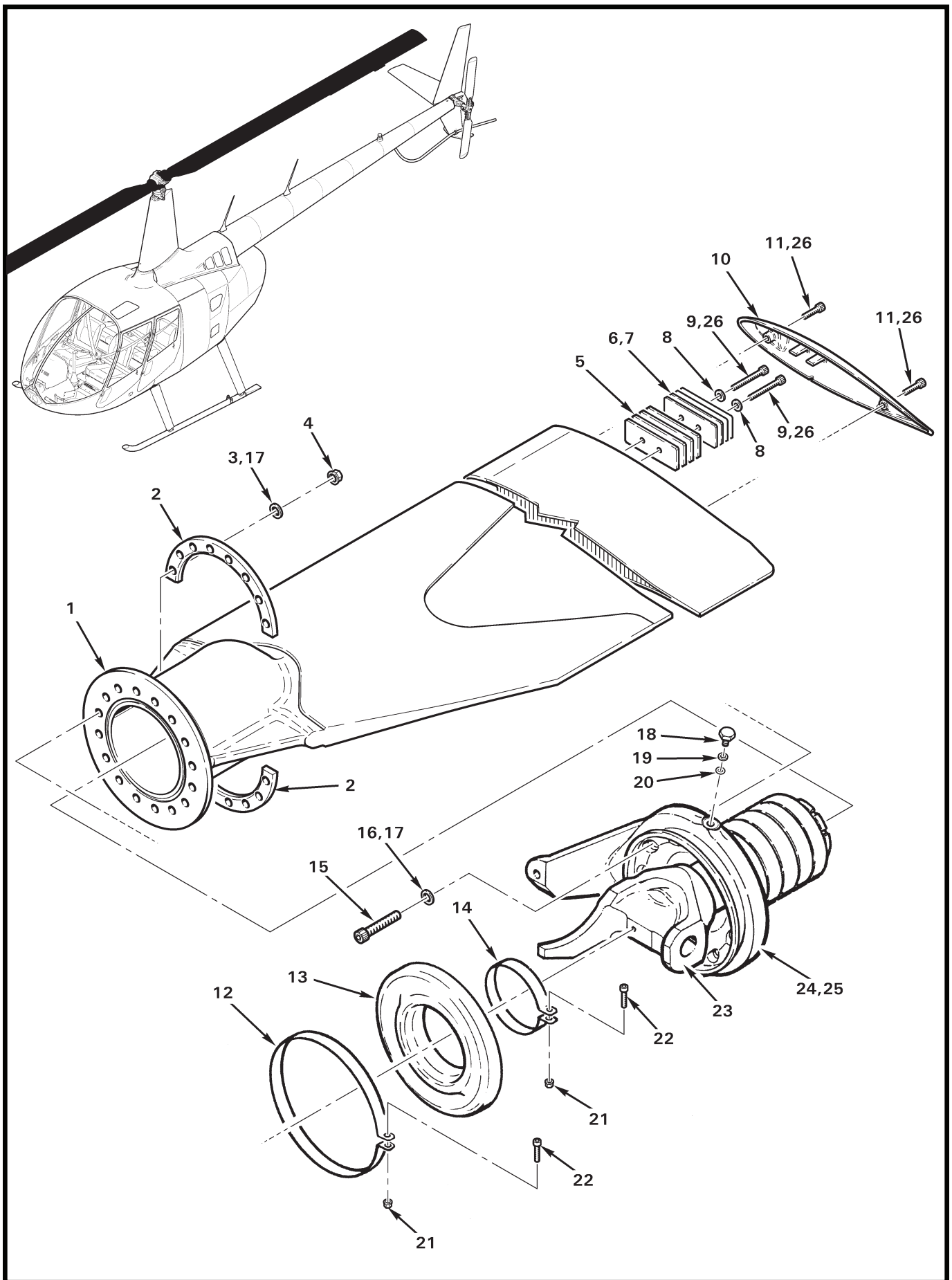


FIGURE AND INDEX NUMBER	PART NUMBER	DESCRIPTION	PARTS AVAIL	QTY PER ASSY
<b>MAIN ROTOR BLADE ASSEMBLY*</b>				
62-1-1	C005-13	Main Rotor Blade and Spindle Assembly – Extended Tab (Incl items 2 thru 4, 15 thru 18, 24, and 25) . . . . .	X	2
	C005-13R	Main Rotor Blade and Spindle Assembly (Two blade set, overhaul exchange; R9648 core deposit req'd. Includes shipping crate.) . . . . .	X	1
	F016-2**	Blade Assembly . . . . .	O	1
2	C253-2	Spacer . . . . .	O	2
3	NAS1149F0563P	Washer . . . . .	X	16
4	D210-5	Nut . . . . .	X	16
5	C298-4	Balance Strip (0.125 in. thick steel) . . . . .	X	A/R
6	C298-2	Balance Strip (0.040 in. thick steel) . . . . .	X	A/R
7	C298-3	Balance Strip (0.032 in. thick steel) . . . . .	X	A/R
8	NAS1149F0332P	Washer (or NAS1149F0363P A/R for balance) . . . . .	X	A/R
9	A722-4	Screw (installed wet using item 26; see MM for special torque) . . . . .	X	2
10	F300-1	Tip Cover (round) . . . . .	X	1
11	NAS1351N3-12P	Screw (installed wet using item 26; see MM for special torque) . . . . .	X	2
12	C165-2	Clamp Assembly (Incl items 21 and 22) . . . . .	X	1
13	C156-1	Boot (standard, black) . . . . .	X	1
	C156-2	Boot (optional for sub-freezing operations, gray) . . . . .	X	1
14	C165-1	Clamp Assembly (Incl items 21 and 22) . . . . .	X	1
15	C722-1	Screw . . . . .	O	16
16	NAS1149F0563P	Washer . . . . .	X	16
17	B270-1	Sealant (2-oz. tube) . . . . .	X	A/R
18	B289-2	Bolt (Incl items 19 and 20) . . . . .	X	2
19	—	Washer . . . . .	O	2
20	A215-902	O-Ring . . . . .	X	1
21	MS21042L08	Nut . . . . .	X	2
22	NAS1352-08-12P	Screw . . . . .	X	2
23	C158-1	Spindle (Ref)		
24	C005-14	Spindle Assembly (Incl items 12 thru 14, and 23) . . . . .	O	1
25	A257-4	Oil (to fill blade housing) . . . . .	X	A/R
26	A257-9	Anti-seize . . . . .	X	A/R

NOTES \* See Figure 99-21 for shipping crate.  
 \*\* Critical part; see R66 MM § 1-60.

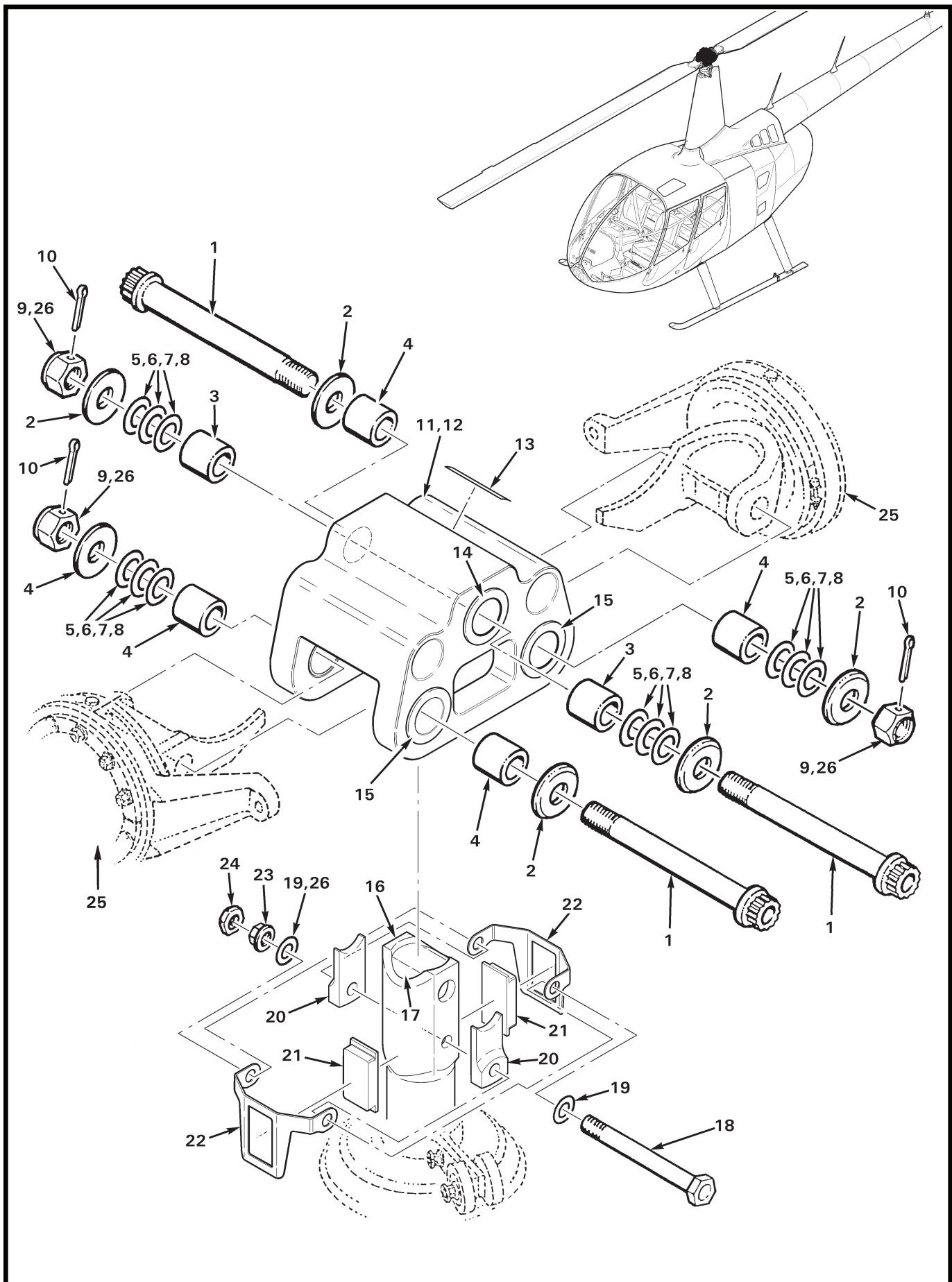


FIGURE AND INDEX NUMBER	PART NUMBER	DESCRIPTION	PARTS AVAIL	QTY PER ASSY
<b>MAIN ROTOR HUB</b>				
62-3-1	NAS634-105	Bolt (install using item 26 on threads) . . . . .	X	3
2	C152-1	Thrust Washer . . . . .	X	6
3	C106-5	Journal-Bearing (length = 1.775 in.) . . . . .	X	2
4	C106-7	Journal-Bearing (length = 1.284 in.) . . . . .	X	4
5	C117-8	Shim-Washer (thickness = 0.012 in.) . . . . .	X	A/R
6	C117-9	Shim-Washer (thickness = 0.015 in.) . . . . .	X	A/R
7	C117-10	Shim-Washer (thickness = 0.020 in.) . . . . .	X	A/R
8	C117-11	Shim-Washer (thickness = 0.025 in.) . . . . .	X	A/R
9	C189-14	Nut . . . . .	X	3
10	MS24665-441	Cotter Pin . . . . .	X	3
11	C005-4	Hub Assembly (Incl items 12 thru 15) . . . . .	X	1
12	C154-1	Hub (Ref, does not include C648 bearings)		
13	A654-18	Decal "LEVEL HERE" . . . . .	X	1
14	C648-3*	Bearing (teeter) . . . . .	X	2
15	C648-1*	Bearing (coning) . . . . .	X	4
16	C251-3	Shaft – Main Rotor (Ref; see Figure 63-3)		
17	C252-1	Spacer – Main Rotor Hub (Ref)		
18	NAS6608-60	Bolt . . . . .	X	1
19	NAS1149F0832P	Washer . . . . .	X	2
20	C150-1	Droop Stop . . . . .	X	2
21	D151-2	Stop (Replaces D151-1. Use only with D226-2 bracket.) . . . . .	X	2
22	D226-2	Bracket (Replaces D226-1. Use only with D151-2 stop.) . . . . .	X	2
23	D210-8	Nut (install using item 26 on threads) . . . . .	X	1
24	B330-24	Palnut . . . . .	X	1
25	C005-13	Blade and Spindle Assembly (Ref, see Figure 62-1)		
26	A257-9	Anti-seize . . . . .	X	A/R

NOTES \* Requires MT329-6 and MT643-1 tools for bearing replacement.

|

Intentionally Blank