

**CHAPTER 25
FURNISHINGS**

<i>Figure</i>	<i>Title</i>	<i>Page</i>
25-1	Seat Installation	25.0
25-3	Forward Seat Belt Installation	25.2
25-5	Aft Seat Belt Installation	25.4
25-9	Five-Point Harness Installation	25.8
25-11	Five-Point Harness Inertia Reel Installation	25.10
25-13	Five-Point Harness Bumper Assembly Installation	25.12
25-15	Carpet Installation	25.14
25-17	Headliner and Insulation Installation	25.16
25-19	Document Holder Installation	25.18
25-21	Fire Extinguisher Installation	25.20
25-23	Kannad ELT Installation	25.22
25-25	Cargo Hook Installation	25.24
25-27	Cargo Hook – Installation	25.26
25-31	Cargo Hook – Details	25.30
25-35	Cargo Hook – Left Side Details	25.34
25-39	Cargo Hook – Right Side Details	25.38
25-43	Cargo Hook – Left Seat Flight Controls	25.42
25-47	Guard Assembly Installation	25.46

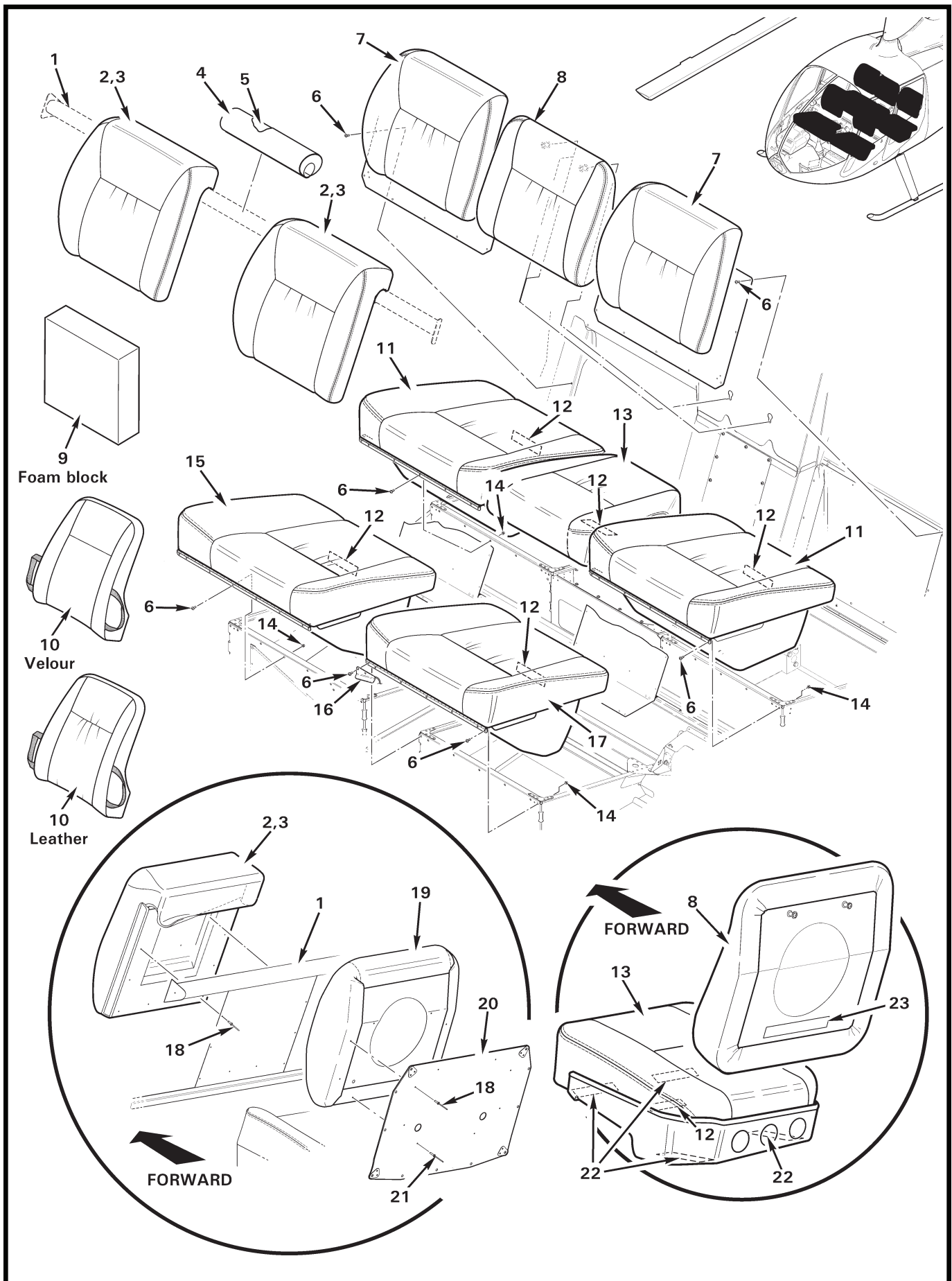


FIGURE AND INDEX NUMBER	PART NUMBER	DESCRIPTION	PARTS AVAIL	QTY PER ASSY
SEAT INSTALLATION				
25-1-1	F423-1	Weldment (seat support, Ref)		
2	F936-1*	Back Rest Assembly (install using item 3 and 18)	X	2
3	B270-18PT	Adhesive	X	A/R
4	C420-2*	Cover Assembly	X	1
5	C424-2	Padding	X	1
6	MS27039C0806	Screw	X	49
7	F003-23	Seat Back Assembly (RH and LH, includes items 18 thru 21)	X	2
8	F932-1*	Back Rest Assembly (not installed in R66 Police; see Figure 90-79 for optional G749 console)	X	1
9	A693-1	Cushion (for shorter pilots, 14 in. X 14 in. X 3 in. foam block)	X	1
10	A693-2*	Cushion Assembly (optional; for shorter pilots)	X	1
11	F921-1*	Seat Assembly (RH and LH, includes item 12 and hinge)	X	2
12	F654-19	Decal – “Energy-Absorbing Seat...”	X	5
13	F931-1*	Seat Assembly (Incl items 12 and 22; not installed in R66 Police, see Figure 90-79)	X	1
14	MS21042L08	Nut	X	29
15	F928-1*	Seat Assembly (includes item 12 and hinge)	X	1
16	G196-7	Light Assembly (Ref)		
17	F930-1*	Seat Assembly (includes item 12 and hinge)	X	1
18	B204-2	Rivet	X	38
19	F936-2*	Back Rest Assembly (RH and LH)	X	2
20	F465-4	Panel Assembly (RH and LH)	X	2
21	B204-3	Rivet	X	4
22	B175-11	Hook Tape	X	A/R
23	B175-11	Hook Tape (earlier R66s this location)	X	A/R

Code	Definition
GRL	Gray leather
GRV	Gray velour
TNL	Tan leather
TNV	Tan velour
CHL	Charcoal leather
CHV	Charcoal velour

NOTES * Refer to *chart* at the end of parts list when ordering. Include code after dash no., for example, F936-1 in gray leather, order “F936-1GRL”.

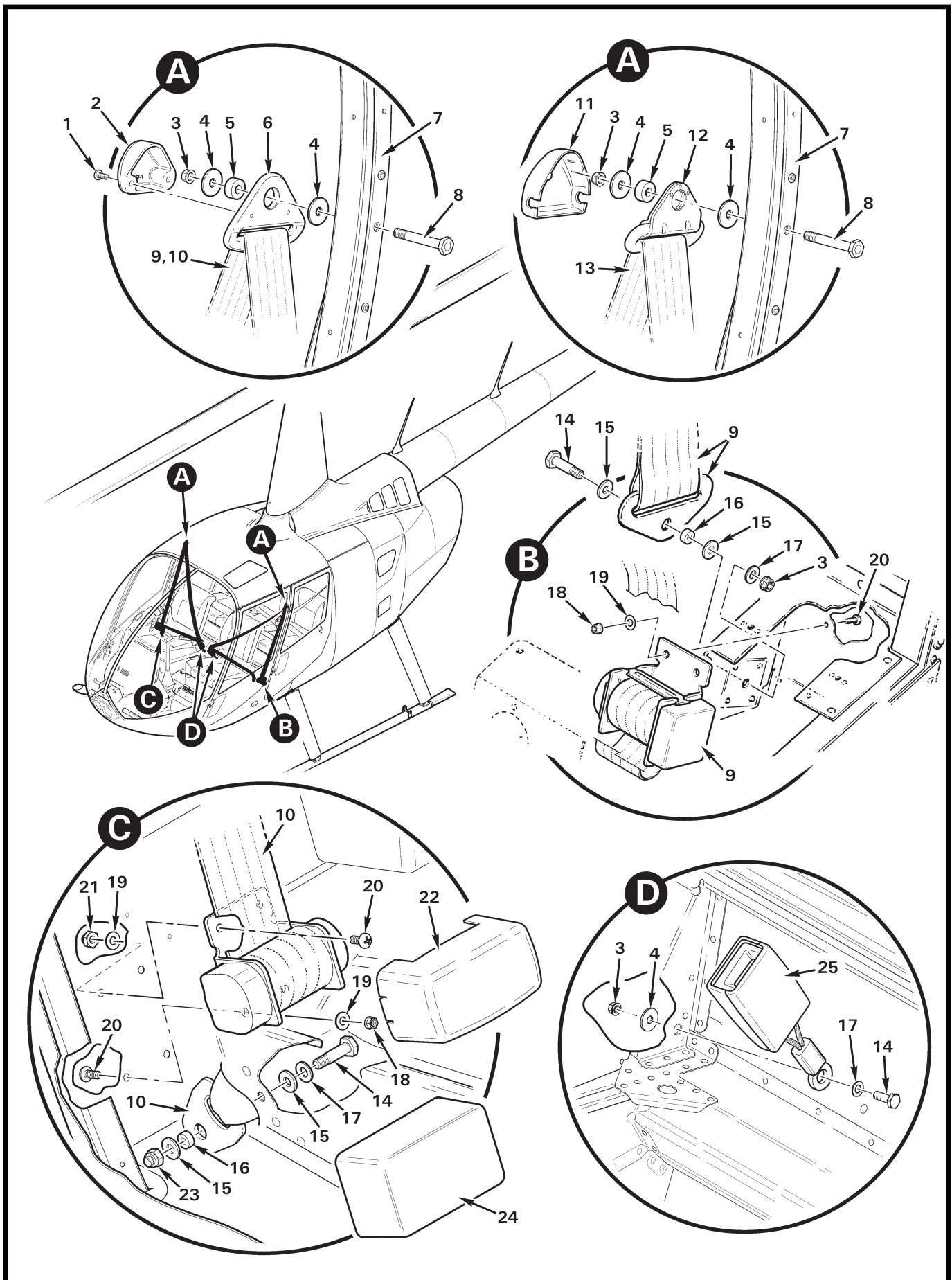


FIGURE AND INDEX NUMBER	PART NUMBER	DESCRIPTION	PARTS AVAIL	QTY PER ASSY
FORWARD SEAT BELT INSTALLATION				
25-3-1	505098-6046	Screw	X	1
2	506357-1	Cover	X	1
3	MS21042L4	Nut	X	4
4	A141-14	Washer	X	6
5	A130-44	Spacer	X	2
6	506356-1	Guide (Ref)		
7	F403	Post Assembly (Ref)		
8	NAS6604-22	Bolt	X	2
9	F628-1	Connector Assembly (LH, includes item 2 and 6)	X	1
10	F628-2	Connector Assembly (RH, includes item 2, 6, and 22)	X	1
11	505798-1	Cover	X	2
12	505561-1	Guide Assembly (Ref, earlier R66's)		
13	F628-1*	Connector Assembly (Ref; LH FWD, revision "F" and prior)		
	F628-2*	Connector Assembly (Ref; RH FWD, revision "F" and prior)		
14	NAS6604-5	Bolt	X	3
15	MS20002-4	Washer	X	4
16	A130-28	Spacer	X	2
17	NAS1149F0432P	Washer	X	4
18	MS21042L3	Nut	X	6
19	NAS1149F0332P	Washer	X	8
20	MS27039C1-07	Screw	X	8
21	B340-8	Nut	X	2
22	506354-3	Cover	X	1
23	B340-10	Nut	X	1
24	505663-3	Cover	X	1
25	F628-5	Buckle Assembly	X	2

NOTES * Earlier R66's.

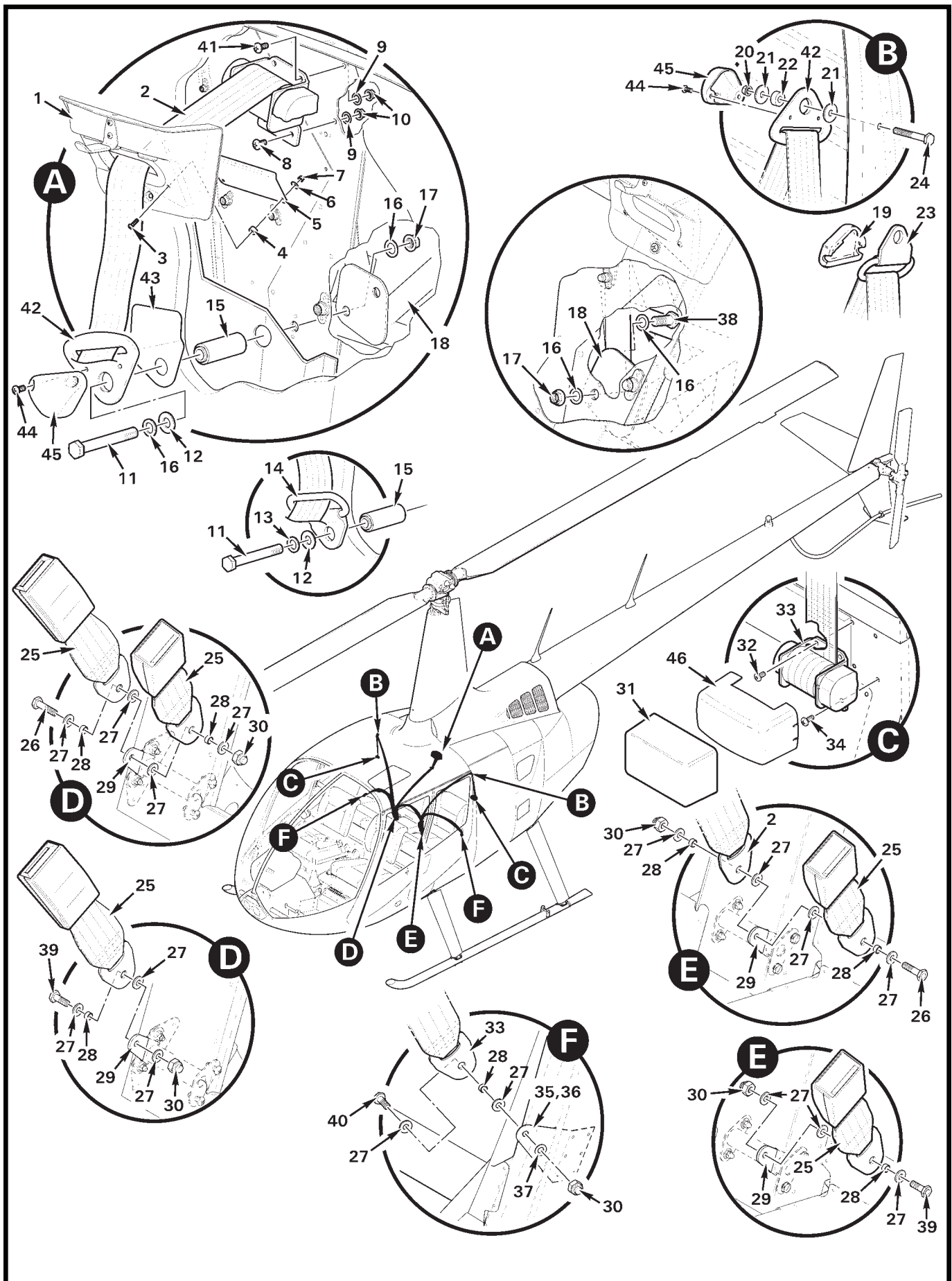


FIGURE AND INDEX NUMBER	PART NUMBER	DESCRIPTION	PARTS AVAIL	QTY PER ASSY
AFT SEAT BELT INSTALLATION				
25-5-1	F436-5	Cover Assembly (Ref; see figure 97-57)		
2	F628-4	Connector Assembly (center, includes items 42 and 45)	X	1
3	MS35206-215	Screw	X	2
4	A130-14	Spacer	X	2
5	F437-4	Shield	X	1
6	NAS1149FN416P	Washer	X	2
7	MS21042L04	Nut	X	2
8	MS27039C1-07	Screw	X	2
9	NAS1149F0332P	Washer	X	4
10	D210-3	Nut	X	4
11	NAS6606-36	Bolt	X	1
12	C141-16	Washer	X	1
13	NAS1149F0663P	Washer	X	1
14	505281-1	Guide (web, cover not shown; earlier ships)	O	1
15	F374-7	Spacer	X	1
16	NAS1149F0632P	Washer	X	1
17	D210-6	Nut	X	1
18	F020-1	Frame (Ref)		
19	505798-1	Cover (earlier ships)	X	2
20	D210-4	Nut	X	2
21	A141-14	Washer	X	4
22	A130-44	Spacer	X	2
23	505561-1	Guide (web; earlier ships)	O	2
24	NAS6604-18	Bolt	X	2
25	F628-6	Buckle Assembly	X	3
26	NAS6604-9	Bolt	X	2
27	MS20002-4	Washer	X	12
28	A130-28	Spacer	X	6
29	F371-1	Weldment (anchor, Ref)		
30	B340-10	Nut	X	4
31	505663-3	Cover (earlier ships)	X	2
32	A142-3	Screw	X	4
33	F628-3	Connector Assembly (LH and RH, includes items 42, 45 and 46)	X	2
34	MS27039C1-07	Screw	X	4

NOTES

Continues

FIGURE AND INDEX NUMBER	PART NUMBER	DESCRIPTION	PARTS AVAIL	QTY PER ASSY
AFT SEAT BELT INSTALLATION (Cont'd)				
25-5-35	F434-1	Anchor – Seat Belt (aft LH, Ref)		
36	F434-2	Anchor – Seat Belt (aft RH, Ref)		
37	NAS1149F0432P	Washer	X	2
38	NAS6606-3	Bolt	X	1
39	NAS6604-6	Bolt	X	2
40	NAS6604-4	Bolt	X	2
41	MS27039C1-08	Screw	X	2
42	506356-1	Guide	O	3
43	G127-1	Guard	X	1
44	505098-6049	Screw	X	2
45	506357-1	Cover	X	3
46	506354-3	Cover	X	2
NOTES				

Intentionally Blank

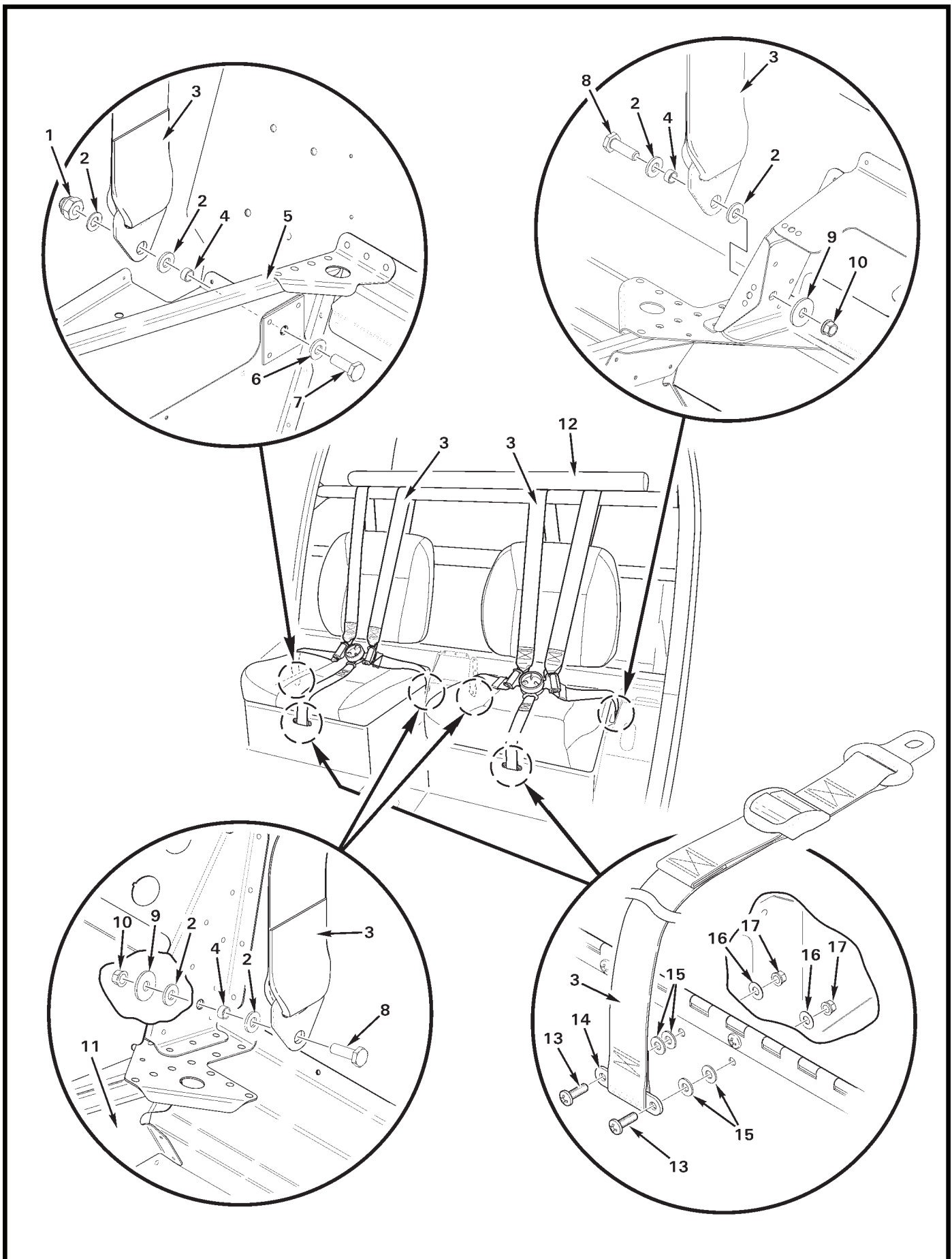


FIGURE AND INDEX NUMBER	PART NUMBER	DESCRIPTION	PARTS AVAIL	QTY PER ASSY
FIVE-POINT HARNESS INSTALLATION				
25-9-1	B340-10	Nut	X	1
2	MS20002-4	Washer	X	8
3	C627-6	Harness Assembly (see also figure 25-11)	X	2
4	A130-28	Spacer	X	4
5	F290-1	Seat Assembly (forward RH, Ref)		
6	NAS1149F0432P	Washer	X	1
7	NAS6604-5	Bolt	X	1
8	NAS6604-6	Bolt	X	3
9	A141-14	Washer (under nut)	X	3
10	MS21042L4	Nut	X	3
11	F297-1	Seat Assembly (Ref; forward LH)		
12	F424-1	Bumper Assembly (Ref, see Figure 25-13)		
13	MS27039C0806	Screw	X	4
14	F426-2	Anchor	X	2
15	NAS1149FN832P	Washer	X	8
16	NAS1149FN816P	Washer	X	4
17	MS21042L08	Nut	X	4

NOTES

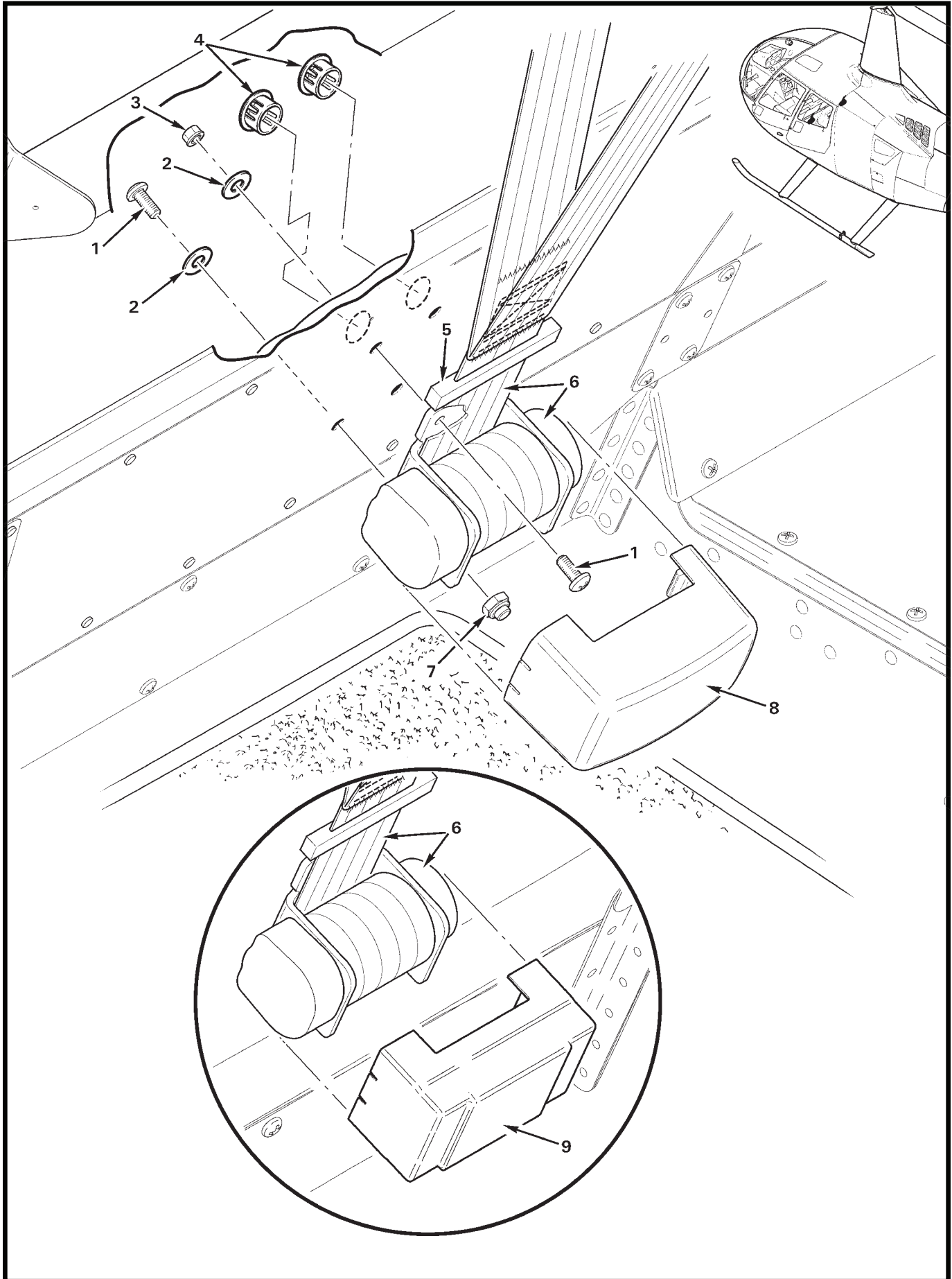


FIGURE AND INDEX NUMBER	PART NUMBER	DESCRIPTION	PARTS AVAIL	QTY PER ASSY
FIVE-POINT HARNESS INERTIA REEL INSTALLATION				
25-11-1	MS27039C1-07	Screw	X	4
2	A141-17	Washer	X	4
3	D210-3	Nut (upper screws)	X	2
4	2663	Hole Plug	X	2
5	C623-1	Spring (Ref)	O	1
	C623-2	Plate (Ref)	O	1
	C623-3	Block (Ref)	O	1
6	C627-6	Five-Point Harness Assembly (Ref; see Figure 25-9)		
7	B340-8	Nut (lower screws)	X	2
8	506354-3	Cover	X	1
9	505663-3	Cover (earlier ships)	X	1

NOTES

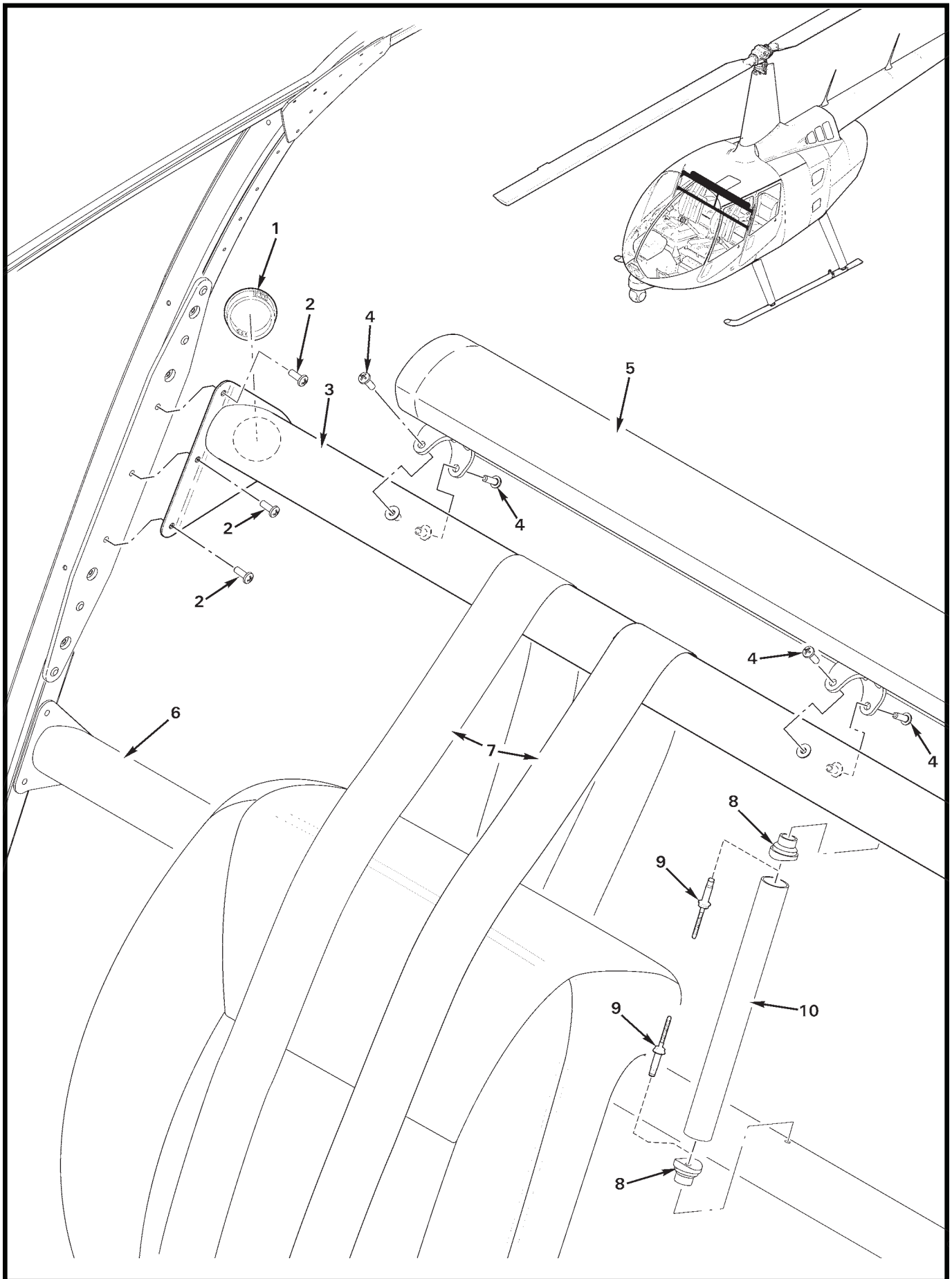


FIGURE AND INDEX NUMBER	PART NUMBER	DESCRIPTION	PARTS AVAIL	QTY PER ASSY
FIVE-POINT HARNESS BUMPER ASSEMBLY INSTALLATION				
25-13-1	2740	Hole Plug	X	2
2	MS27039C1-07	Screw	X	6
3	F423-4	Tube Assembly (Incl item 1)	X	1
4	MS27039C0808	Screw	X	8
5	F424-1	Bumper Assembly	X	1
6	F423-1	Tube Weldment (Ref)		
7	C627-6	Five-Point Harness Assembly (Ref)		
8	C421-7	Fitting	X	2
9	NAS9301B-5-06	Rivet	X	2
10	C421-6	Tube	X	1

NOTES

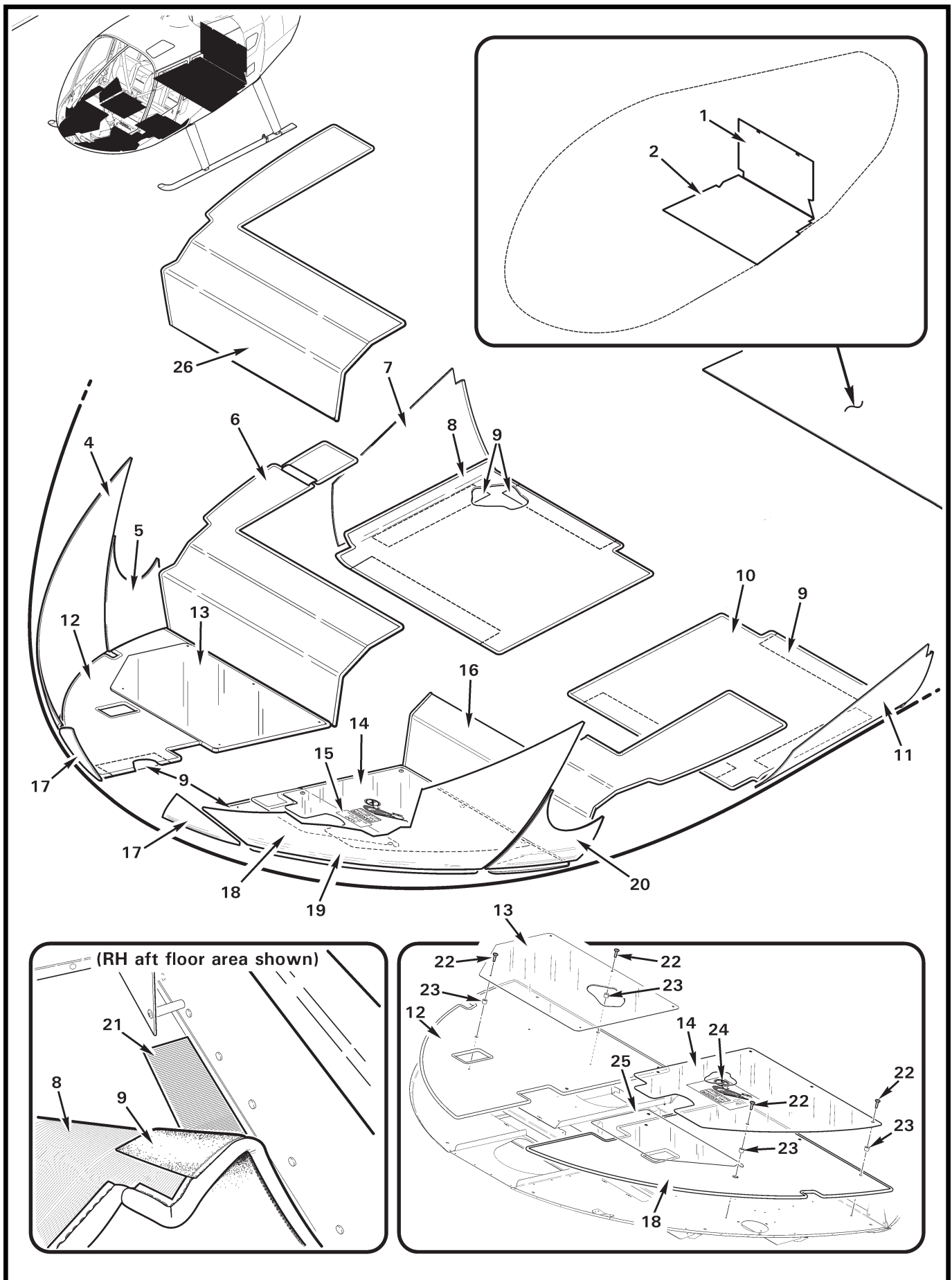


FIGURE AND INDEX NUMBER	PART NUMBER	DESCRIPTION	PARTS AVAIL	QTY PER ASSY
CARPET INSTALLATION				
25-15-1	F469-26*	Liner – Baggage Compartment	X	1
	F469-20*	Liner – Baggage Compartment (earlier R66s; not shown, Ref)	O	1
2	F469-25	Liner – Baggage Compartment	X	1
	F469-21*	Liner – Baggage Compartment (earlier R66s).	X	1
3	B270-8QT	Adhesive	X	A/R
4	F469-12*	Carpet** (RH)	X	1
5	F469-10*	Carpet** (RH)	X	1
6	F469-24*	Carpet Assembly** (RH; flap over external power plug not bonded down, see Figure 96-13)	X	1
7	F469-14*	Carpet Assembly** (RH)	X	1
8	F469-6***	Carpet Assembly** (RH, includes item 9)	X	1
9	B175-4	Loop Tape (black)	X	A/R
	B175-34	Loop Tape (tan)	X	A/R
10	F469-5***	Carpet Assembly** (LH, includes item 9)	X	1
11	F469-13*	Carpet Assembly** (LH)	X	1
12	F469-2***	Carpet Assembly** (RH)	X	1
13	G469-2	Scuff Plate	X	1
14	G469-1	Scuff Plate Assembly (Incl item 23)	X	1
15	B850-25	Hebrew Decal (place above marking on fwd scuff plate)	X	1
16	F469-7*	Carpet Assembly** (LH)	X	1
17	F469-15*	Carpet** (LH and RH)	X	2
18	F469-11*	Carpet** (LH)	X	1
19	F469-1***	Carpet Assembly** (LH)	X	1
20	F469-9*	Carpet** (LH)	X	1
21	B175-13	Hook Tape	X	A/R
22	AN525-832R10	Screw	X	10
23	A130-33	Spacer (between floor and scuff plate)	X	10
24	A654-85	Decal – “Danger” (earlier R66s; replace with G469-1 scuff plate, Ref)		
25	B392-3	Cover (pedal openings)	X	1
26	F469-8	Carpet Assembly (RH; earlier R66s)	X	A/R

NOTES * Install using item 3.
 ** Available in dark charcoal only.
 *** Install using item 21.

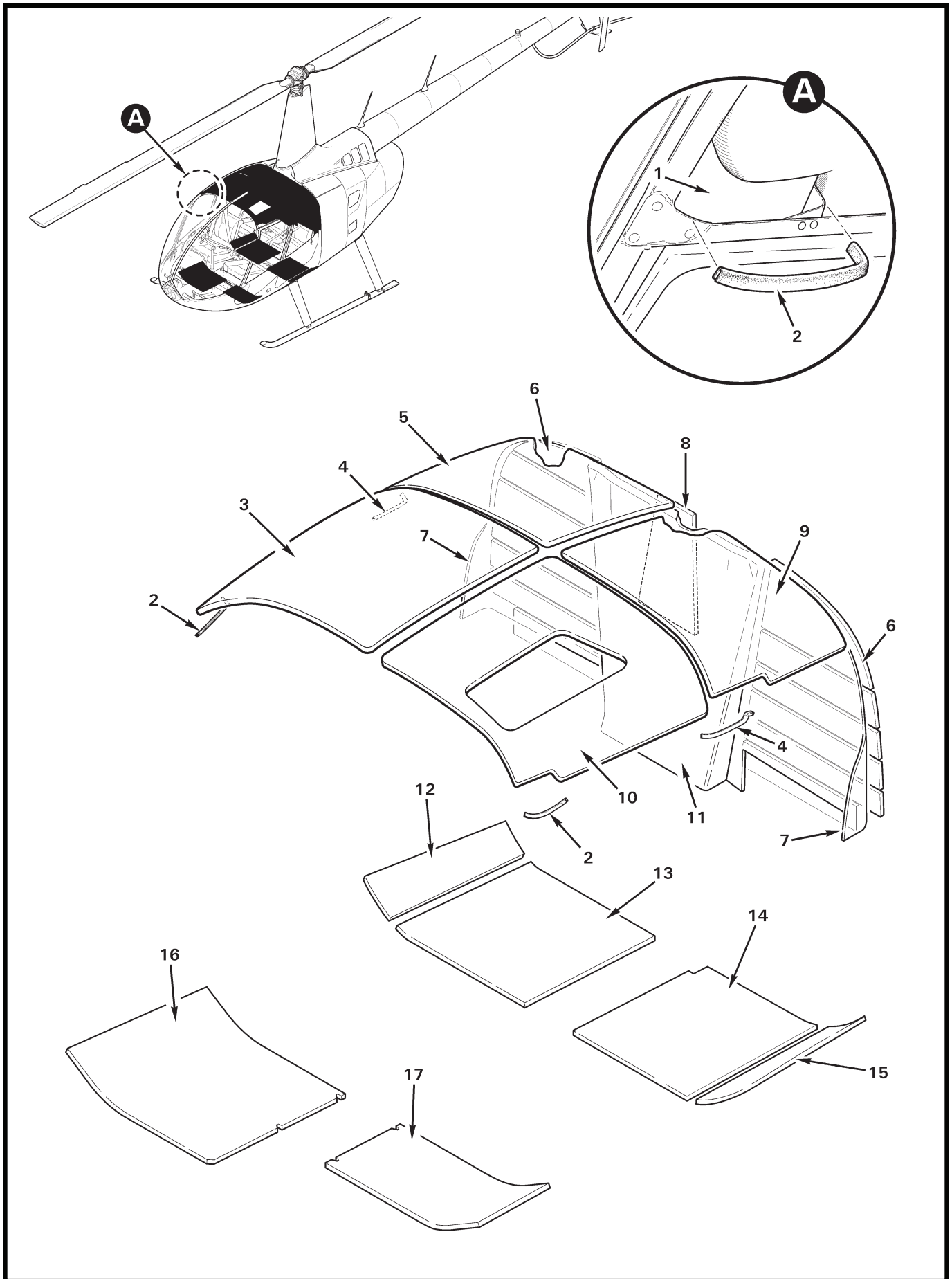


FIGURE AND INDEX NUMBER	PART NUMBER	DESCRIPTION	PARTS AVAIL	QTY PER ASSY
HEADLINER AND INSULATION INSTALLATION				
25-17-1	C212-3	Patch* (black vinyl, four places)	X	4
2	C212-1	Trim (forward, LH and RH)	X	2
3	F003-6**	Insulation* (RH, headliner)	X	1
4	C212-2	Trim (aft, LH and RH)	X	2
5	F003-15**	Insulation* (RH, aft headliner)	X	1
	F003-18**	Insulation* (RH; with A/C, not shown)	X	1
6	F003-10	Insulation* (RH and LH; cut into sections)	X	2
7	F003-25**	Insulation* (LH)	X	1
	F003-26**	Insulation* (RH)	X	1
	F003-8**	Insulation* (RH and LH; earlier ships)	O	2
8	F003-14	Insulation* (inside main rotor gearbox compartment)	X	1
9	F003-7**	Insulation* (LH)	X	1
	F003-17**	Insulation* (LH; with A/C, not shown)	X	1
10	F003-5**	Insulation* (LH, headliner)	X	1
11	F003-9**	Insulation* (LH, aft headliner)	X	1
12	F470-10	Liner (RH,aft)	X	1
13	F470-8	Liner (RH, under aft seat assemblies)	X	1
	F003-13	Liner (RH, under aft seat assemblies; earlier ships)	O	1
14	F470-7	Liner (LH, under aft seat assemblies)	X	1
	F003-13	Liner (RH, under aft seat assemblies; earlier ships)	O	1
15	F470-9	Liner (LH, aft)	X	1
16	F470-6	Insulation (RH, under forward seat)	X	1
	F003-12	Insulation (RH, under forward seat; earlier ships)	O	1
17	F470-5	Insulation (LH, under forward seat)	X	1
	F003-11	Insulation (LH, under forward seat; earlier ships)	O	1
18	B270-8qt	Adhesive	X	A/R

NOTES * Install using item 18.
 ** Please specify color (blue, grey, tan or charcoal).

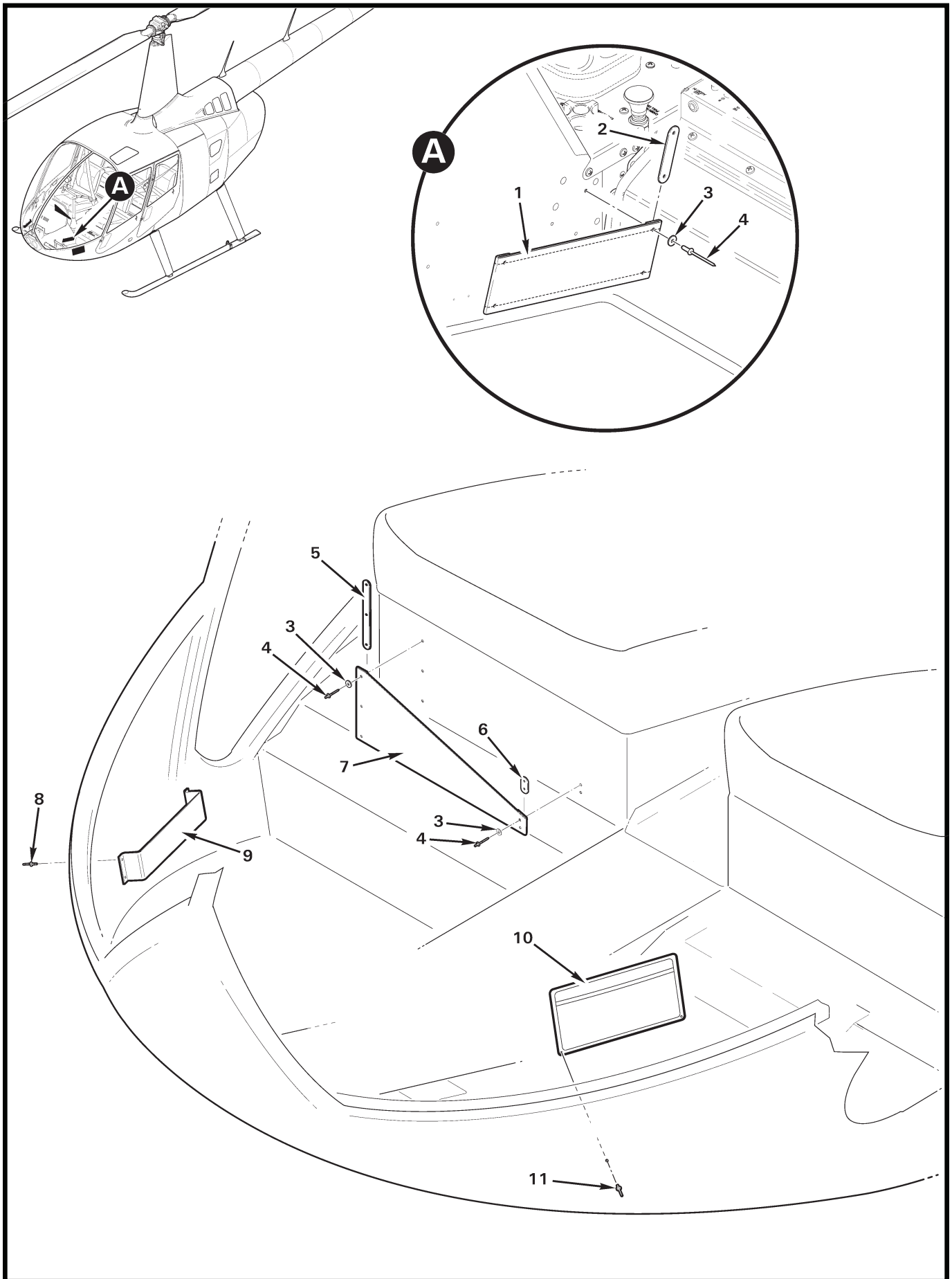


FIGURE AND INDEX NUMBER	PART NUMBER	DESCRIPTION	PARTS AVAIL	QTY PER ASSY
DOCUMENT HOLDER INSTALLATIONS				
25-19-1	A912-6	Pocket (console, LH and RH; 2.38" x 10.35")	X	2
	A912-5	Pocket (console, LH and RH; earlier ships, 4.13" x 10.35" not shown)	X	2
2	A913-5	Strip (short, console)	X	4
	A913-3	Strip (long, console; earlier aircraft, not shown)	X	4
3	NAS1149FN632P	Washer	X	16
4	B204-2	Rivet	X	16
5	A913-1	Strip (long, seat)	X	2
6	A913-2	Strip (short, seat)	X	2
7	A912-1	Pocket	X	1
8	NAS9301B-4-05	Rivet	X	4
9	A745-1	Strap	X	1
10	13-07900	License Holder	X	1
11	NAS9301B-4-04	Rivet (or NAS9301B-4-05)	X	4

NOTES

FIGURE AND INDEX NUMBER	PART NUMBER	DESCRIPTION	PARTS AVAIL	QTY PER ASSY
FIRE EXTINGUISHER INSTALLATION				
25-21-1	B381-1	Fire Extinguisher	X	1
2	G654-15	Decal – "MAINTENANCE LOG..." (see SL-23A or subsequent)	X	1
3	MS27039C08XX	Screw (select screw length to provide 0.00-0.06 in. exposed thread)	X	2
4	C130-54	Spacer	X	2
5	B381-3	Bracket	X	1
6	G220-1	Retainer	X	2
7	MS21042L08	Nut	X	2

NOTES

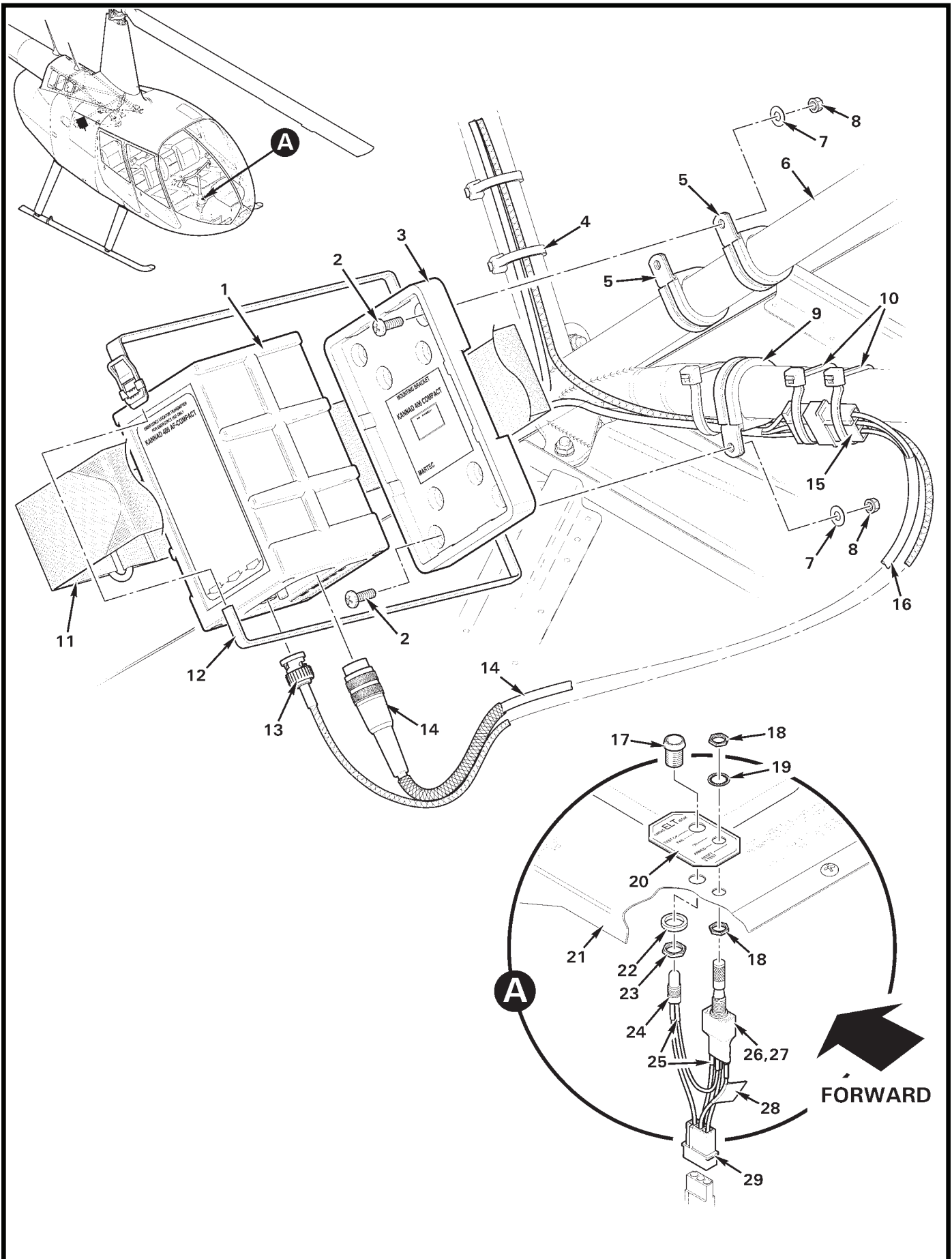


FIGURE AND INDEX NUMBER	PART NUMBER	DESCRIPTION	PARTS AVAIL	QTY PER ASSY
KANNAD ELT INSTALLATION				
25-23-1	S1851501-02*	ELT Transmitter (Integra AF)	X	1
	S1840501-01*	ELT Transmitter (406 AF-Compact; earlier aircraft)	O	1
2	MS27039C1-08	Screw (or MS27039C1-09 as required to achieve 2 to 4 threads exposed)	X	2
3	S1840502-01*	Bracket – Mounting (ELT)	X	1
4	MS3367-7-0	Ty-Rap	X	A/R
5	MS21919WDG16	Clamp	X	2
6	F020-1	Upper Frame (Ref)		
7	NAS1149F0316P	Washer	X	6
8	D210-3	Nut	X	3
9	MS21919WDG18	Clamp	X	1
10	MS3367-7-9	Ty-Rap	X	A/R
11	—	Strap (included with item 3)	O	1
12	D693-4	Strap Assembly	X	1
13	5225395-6	Plug	X	2
	B274-518	Cable	X	A/R
14	A837-10	Harness Assembly	X	1
15	B263-14	Housing	X	1
	B263-1	Pin	X	3
16	—	Wires (Ref; -1849, -1850, and 1851)		
17	—	Mount – LED	O	1
18	—	Nut	O	2
19	—	Lockwasher	O	1
20	—	Panel	O	1
21	F444-1	Cover – Cyclic Control Assembly (Ref)		
22	—	Ring	X	1
23	—	Nut	O	1
24	—	LED (bi-polar, red)	X	1
25	B158-1	Heat Shrink	X	A/R
26	—	Switch (remote control, 3-position, locking)	O	1
27	F837-3	Switch Assembly (Incl items 17 thru 20; 22 thru 26, 28, 29 and wires; assembled)	X	1
28	—	Production Stamp	O	1
29	B263-14	Housing	X	1
	B263-1	Pin	X	3

NOTES * Kannad part no.

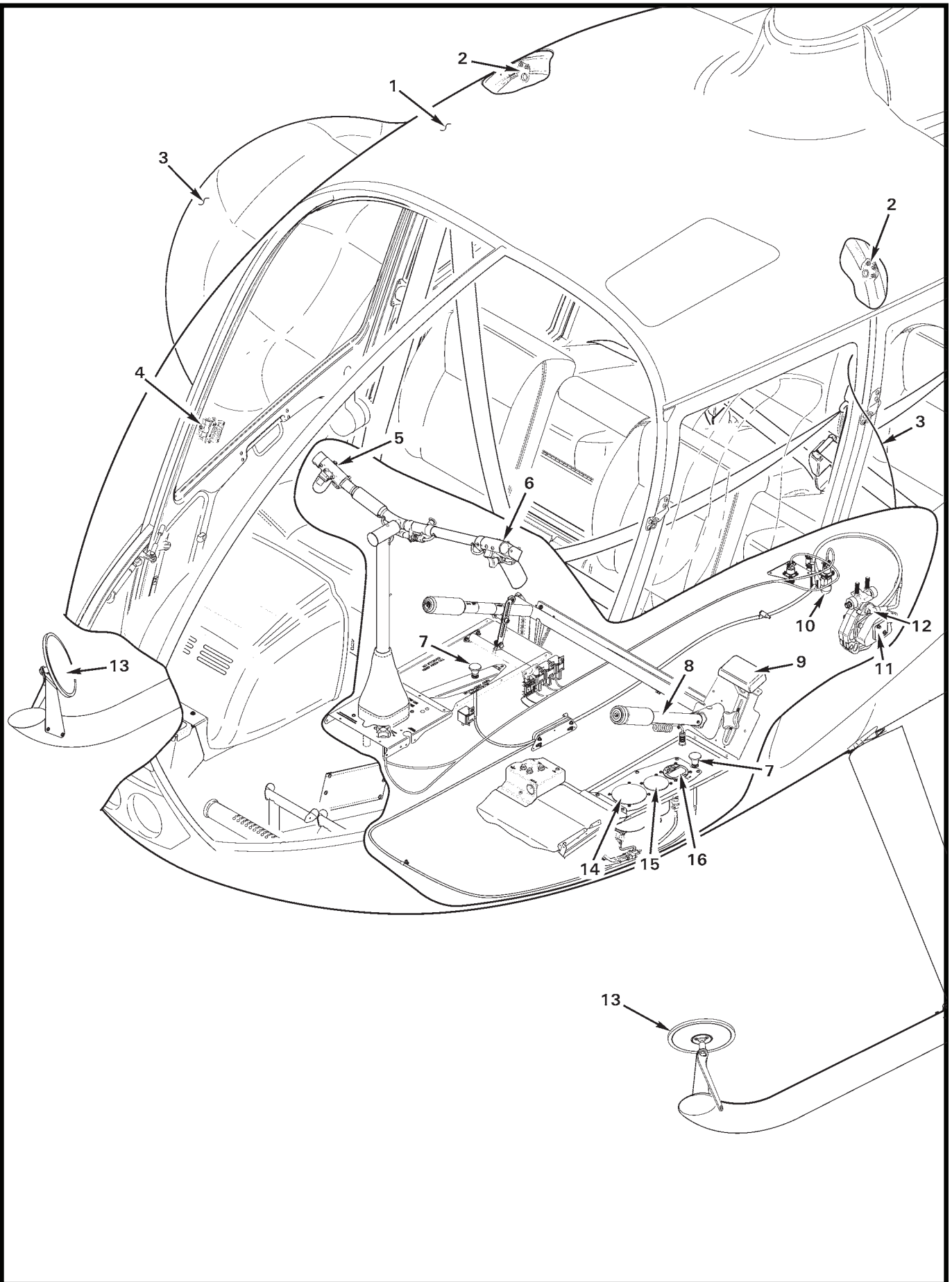


FIGURE AND INDEX NUMBER	PART NUMBER	DESCRIPTION	PARTS AVAIL	QTY PER ASSY
CARGO HOOK INSTALLATION				
25-25-1	G132-4	R66 Cargo Hook Installation – Advanced (Incl items 2 thru 16; equipment is standard unless otherwise noted.)		
2	G949-1	Hardpoint Installation – Cabin Interior (Ref, optional; see Figure 25-31)		
3	G142-1 & -2	Door Assembly Installation (Ref, optional; see Figure 25-31)		
4	D580-5 & -6	Fan Assembly (Ref, optional; see Figure 25-31)		
5	C058-12	Grip Assembly – Cyclic (Ref; see Figure 25-39)		
	C058-18	Grip Assembly – Cyclic (Ref, w/autopilot; see Figure 25-39)		
6	C058-13	Grip Assembly – Cyclic (Ref; see Figure 25-43)		
	C058-19	Grip Assembly – Cyclic (Ref, w/autopilot; see Figure 25-43)		
7	A522-15 & 16	Control – Cargo Hook Mechanical Release (Ref; see Figures 25-35 and 25-39)		
8	C758-4	Removable Collective (Ref, with start button; see Figure 25-43)		
9	G135-7	Support Assembly (Ref, see Figure 25-35)		
10	G140-3	Harness Assembly – External Load (Ref; see Figure 25-27)		
11	528-029-00*	Cargo Hook (Ref; see Figure 25-27)		
12	–	Load Cell (Ref; see Figure 25-27)		
13	G141-1 & -2	Skid Mirror Installation (Ref, optional; see Figure 25-31)		
14	–	Torque Meter (Ref, see Figure 25-35)		
15	–	MGT Meter (Ref, see Figure 25-35)		
16	–	Load Meter (Ref, see Figure 25-35)		
<p>NOTES * Onboard Systems part no,</p>				

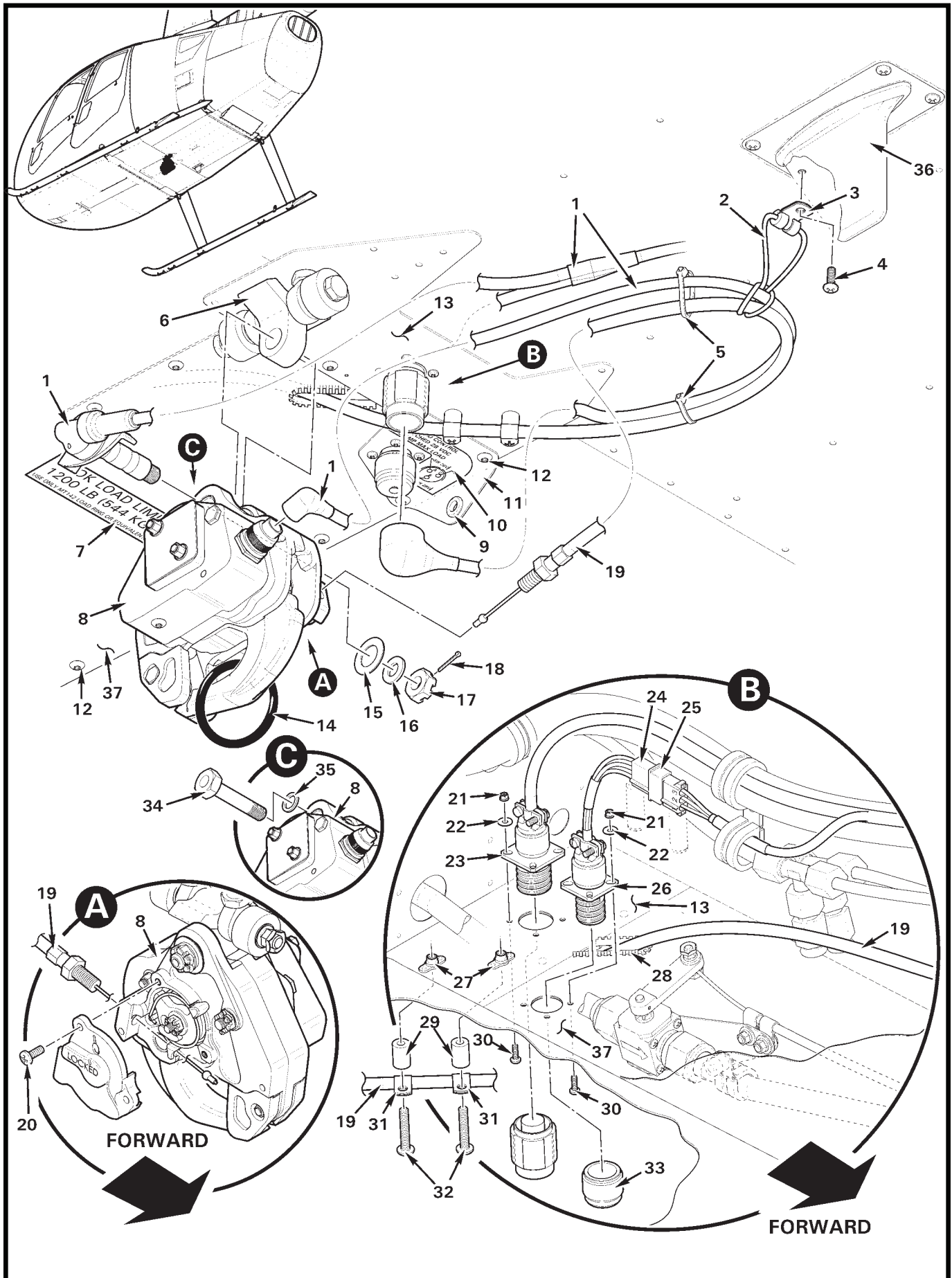


FIGURE AND INDEX NUMBER	PART NUMBER	DESCRIPTION	PARTS AVAIL	QTY PER ASSY
CARGO HOOK – INSTALLATION				
25-27-1	G140-6	Harness Assembly (electronic hook release, not shown)	X	1
	G140-7	Harness Assembly (electronic hook release, with load cell) . .	X	1
2	A215-149	O-ring	X	1
3	MS21919WDG2	Clamp	X	1
4	MS27039C0807	Screw (replaces existing screw)	X	1
5	MS3367-5-0	Ty-rap	X	2
6	G137-1	Hardpoint Hinge Assembly (Ref, see Figure 10-5)		
7	F654-44	Decal – “HOOK LOAD LIMIT 1200 LB (544 KG)...”	X	1
8	528-029-00*	Cargo Hook (Incl item 20; attach using items 15 thru 18, 34 and 35 if G140-1 installed)	X	1
9	NAS557-6A	Grommet	X	1
10	F654-47	Decal – “EXT LOAD CONTROL...”	X	2
11	G135-6	Angle	X	1
12	B526-6	Screw (Ref; existing hardware)		
13	F382-3	Plate (Ref)		
14	MT142-1	Primary Ring	O	1
15	510-183-00	Washer	X	1
16	510-174-00	Washer	X	1
17	510-170-00	Nut	X	1
18	510-178-00	Cotter Pin	X	1
19	D676-3	Cable Assembly	X	1
20	—	Screw	O	2
21	MS21042L04	Nut	X	8
22	NAS1149FN416P	Washer	X	8
23	G140-1	Harness Assembly (electronic hook release, basic installation)	X	1
	G140-2	Harness Assembly (electronic hook release, with load cell; advanced installation)	X	1
	G140-8	Harness Assembly (optional, electronic hook release, with load cell, basic installation)	X	1
24	B263-14	Housing	X	1
	B263-1	Pin	X	3
25	B263-15	Housing	X	1
	B263-2	Socket	X	3
26	G140-3	Harness Assembly	X	1
27	MS21069L08	Nutplate	X	2
28	A225-2	Grommet	X	A/R

NOTES * Onboard Systems part no.

Continues

FIGURE AND INDEX NUMBER	PART NUMBER	DESCRIPTION	PARTS AVAIL	QTY PER ASSY
CARGO HOOK – INSTALLATION (Cont’d)				
25-27-29	A130-38	Spacer	X	2
30	MS23506-215	Screw	X	8
31	AN742-4	Clamp	X	2
32	MS27039C0816	Screw	X	2
33	FTC-4	Cap (labeled “FC-4”)	X	1
34	290-332-00*	Bolt (used if load cell not installed, basic installation)	X	1
35	510-144-00*	Washer	X	1
36	CI-105-16	Antenna – Transponder (Ref; see Figure 6-19)		
37	F794-2	Panel (Ref)		

NOTES * Onboard Systems part no.

Intentionally Blank

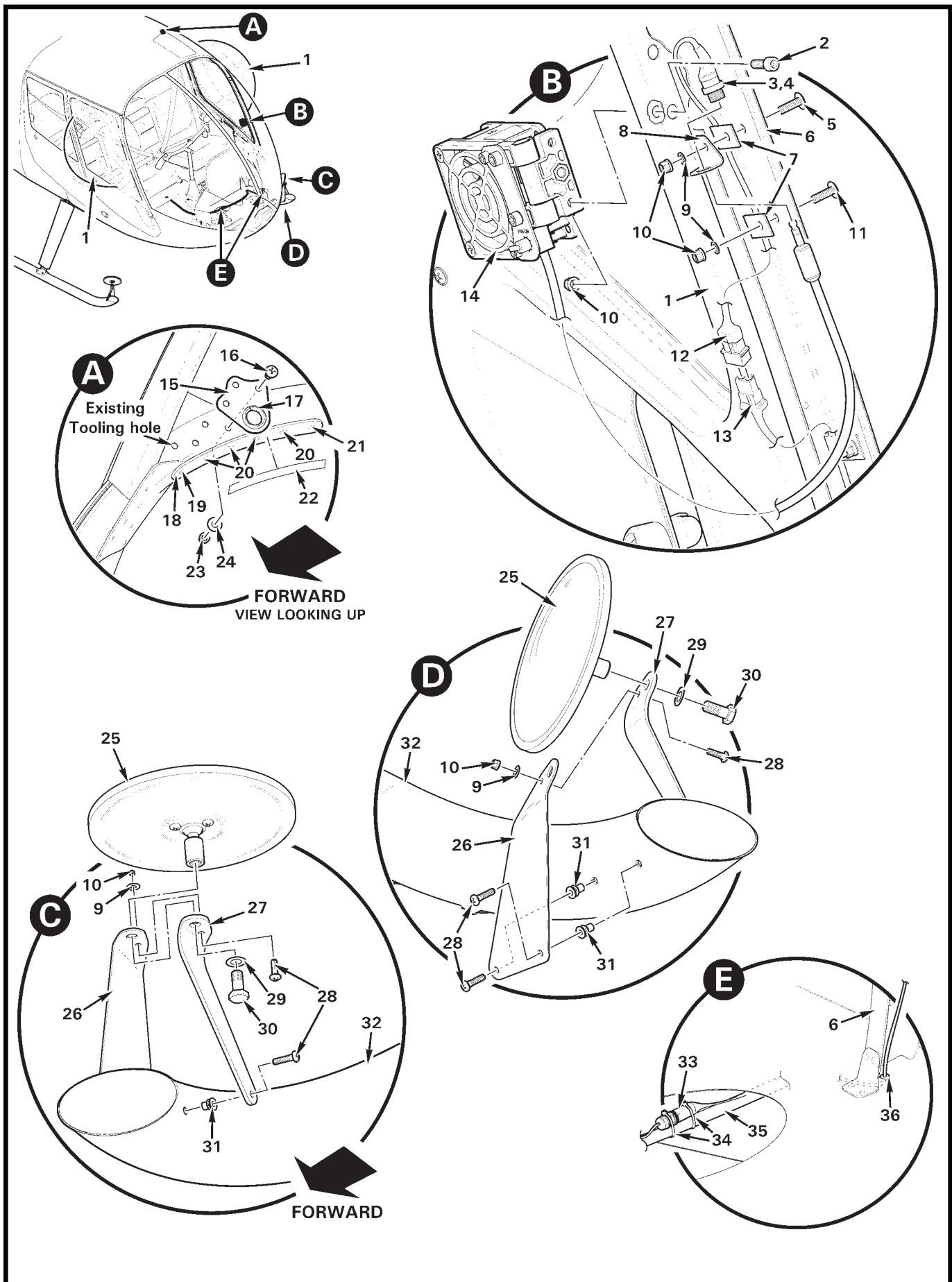


FIGURE AND INDEX NUMBER	PART NUMBER	DESCRIPTION	PARTS AVAIL	QTY PER ASSY
CARGO HOOK – DETAILS				
25-31-1	C026-005	Large Bubble Door Assembly – Forward LH (Ref; see Figure 52-1)		
	C026-006	Large Bubble Door Assembly – Forward RH (Ref; see Figure 52-1)		
2	NAS1352-08-8	Screw	X	2
3	G140-9	Harness Assembly (includes items 4, 12, B266-4 sleeving, and B158 heat shrink)	X	1
4	712A	Receptacle	X	1
5	AN526C832R9	Screw	X	1
6	C238	Jamb (Ref)		
7	D098-6	Tab	X	4
8	G145-3	Angle – LH	X	1
	G145-4	Angle – RH	X	1
9	NAS1149FN816P	Washer	X	5
10	MS21042L08	Nut	X	7
11	AN526C832R8	Screw	X	3
12	B263-32	Housing	X	1
	B263-1	Pin	X	2
13	B263-33	Housing (Ref)		
	B263-2	Socket (Ref)		
14	D580-5	Fan Assembly – LH	X	1
	D580-6	Fan Assembly – RH	X	1
15	G949-2	Ring		
16	MS27039C1-06	Screw	X	3
17	NAS557-8A	Grommet	X	1
18	G949-3	Doubler	X	1
19	NAS9301B-5-05	Rivet	X	1
20	MS20426AD4	Rivet	X	4
21	MS20470AD4	Rivet	X	1
22	G654-2	Decal – “Safety Harness Attach Point...”	X	1
23	D210-3	Nut	X	3
24	NAS1149F0332P	Washer	X	3
25	97819	Mirror (Incl items 28 and 29)	X	1
26	G138-5	Support – LH	X	1
	G138-6	Support – RH	X	1

NOTES

Continues

FIGURE AND INDEX NUMBER	PART NUMBER	DESCRIPTION	PARTS AVAIL	QTY PER ASSY
CARGO HOOK – DETAILS (Cont'd)				
25-31-27	G138-7	Strap – LH	X	1
	G138-8	Strap – RH	X	1
28	MS27039C0808	Screw	X	4
29	—	Lockwasher	O	1
30	—	Bolt	O	1
31	NAS1329H08K	Rivet Nut	X	3
32	F014	Landing Gear (Ref)		
33	D262-11	Fuse Holder	X	1
	AGC-1-R	Fuse	X	1
34	MS3367-5-9	Ty-rap	X	A/R
35	A780-70	Cable Assembly (Ref)		
36	MS35489-4	Grommet	X	1
NOTES				

Intentionally Blank

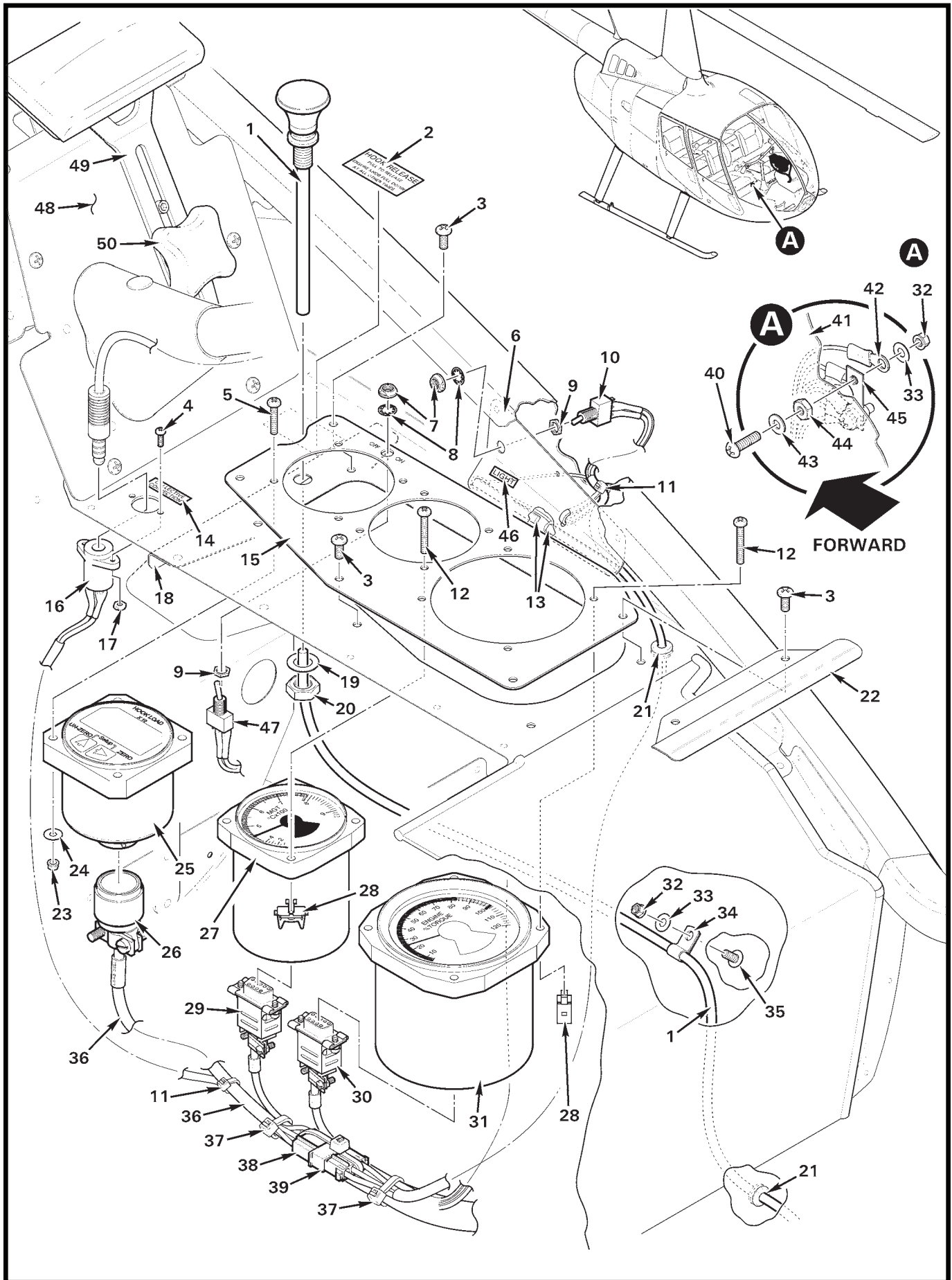


FIGURE AND INDEX NUMBER	PART NUMBER	DESCRIPTION	PARTS AVAIL	QTY PER ASSY
CARGO HOOK – LEFT SIDE DETAILS				
25-35-1	A522-16	Control (manual cargo hook release)	X	1
2	G654-13	Decal – “HOOK RELEASE...”	X	1
3	MS27039C0806	Screw	X	5
4	MS35206-215	Screw	X	2
5	MS35206-232	Screw	X	4
6	G196-4	Light Assembly (includes items 10, 11 [1], 13, sealant, heat shrink and wires)	X	1
7	B227-4	Dress Nut	X	2
8	B227-3	Lockwasher	X	2
9	—	Nut	O	1
10	B300-3	Switch Assembly (Incl items 7 thru 9)	X	2
11	MS3367-4-9	Ty-rap	X	A/R
	MS3367-5-9	Ty-rap	X	A/R
12	MS35206-234	Screw	X	8
13	G196-5	LED Strip	X	2
14	G654-4	Decal – “COLLECTIVE CONNECTION”	X	1
15	G138-4	Face	X	1
16	TJ-120	Jack	X	1
17	B330-2	Palnut	X	2
18	G138-2	Support Assembly	X	1
19	—	Washer	O	1
20	—	Nut	O	1
21	MS35489-4	Grommet	X	2
22	G135-5	Cover	X	1
23	MS21042L06	Nut	X	4
24	NAS1149FN616P	Washer	X	4
25	210-095-00*	Load Meter	X	1
26	MS3126F14-15S	Plug	X	1
27	T1221MK900C010	MGT Meter	X	1
28	MS33737-15C	Nut – Instrument	X	8
29	B269-4	Receptacle	X	1
	B269-21	Backshell	X	1
30	G140-4	Harness Assembly	X	1
31	F600-2	Torque Meter	X	1
32	MS21042L08	Nut	X	3

NOTES * Onboard Systems part no.

Continues

FIGURE AND INDEX NUMBER	PART NUMBER	DESCRIPTION	PARTS AVAIL	QTY PER ASSY
CARGO HOOK – LEFT SIDE DETAILS (Cont'd)				
25-35-33	NAS1149FN816P	Washer	X	3
34	AN742-3	Clamp	X	1
35	AN526C832R8	Screw	X	1
36	G140-2	Harness Assembly	X	1
37	MS3367-7-9	Ty-rap	X	A/R
38	B263-14	Housing	X	1
	B263-1	Pin	X	3
39	B263-15	Housing	X	1
	B263-2	Socket	X	3
40	B567-43	Screw	X	2
41	F293-1	Panel – LH (Ref)		
42	B260-3	Terminal	X	A/R
43	NAS1149DN832H	Washer	X	2
44	B301-8	Nut	X	2
45	A448-3	Bus Bar	X	1
46	F654-48	Decal – "LIGHT"	X	1
47	B049-9	Switch Assembly (load cell meter)	X	1
48	G135-8	Cover Assembly	X	1
49	G135-7	Support Assembly	X	1
50	2454K71	Knob	X	1

NOTES

Intentionally Blank

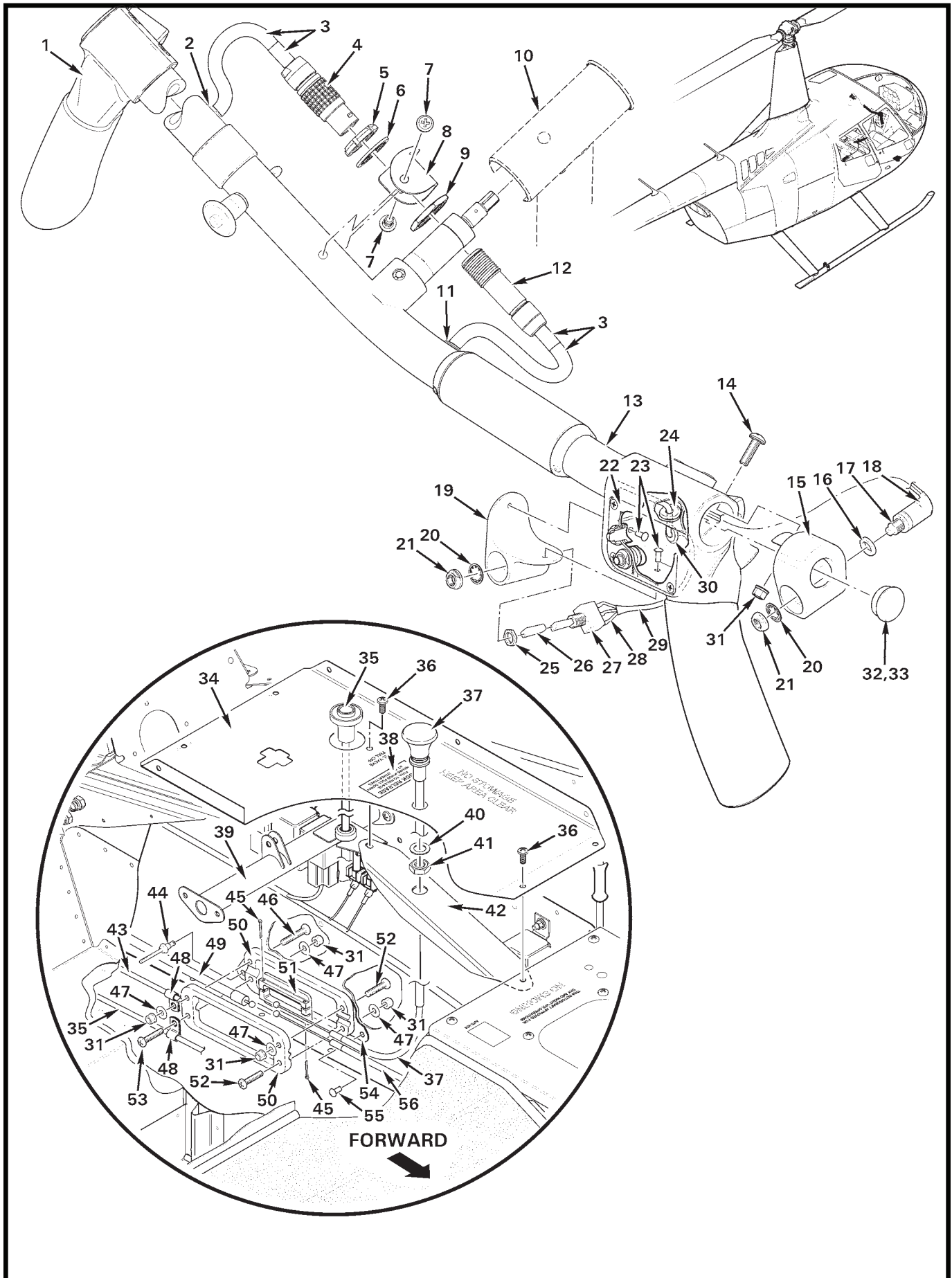


FIGURE AND INDEX NUMBER	PART NUMBER	DESCRIPTION	PARTS AVAIL	QTY PER ASSY
CARGO HOOK – RIGHT SIDE DETAILS				
25-39-1	C058-9	Grip Assembly – Cyclic (Ref, Co-pilot; see also Figure 67-11.)		
	C058-19	Grip Assembly – Cyclic (Ref, Co-pilot, with autopilot. See also Figure 67-11.)		
2	G1038	Grommet	X	1
3	B158-4	Heat Shrink	X	A/R
4	FGG2B314KLAD62	Plug	X	5
5	—	Nut	O	1
6	—	Washer	O	1
7	MS35206-242	Screw	X	2
8	G136-7	Housing	X	1
9	—	Nut	O	1
10	C069	Cyclic Control System (Ref)		
11	G1042	Grommet	X	1
12	PFG2B314KLLD62	Receptacle (Incl items 5, 6, and 9)	X	1
13	C058-12	Grip Assembly – Cyclic (Pilot/Co-Pilot, includes item 1 [C058-9]. Ref, see also Figure 67-11.)		
	C058-18	Grip Assembly – Cyclic (Pilot/Co-Pilot, with autopilot. Includes item 1 [C058-19]. Ref, see also Figure 67-11.)		
14	MS27039C0808	Screw	X	1
15	G136-1	Housing	X	1
16	94773A770	Washer	X	1
17	B227-2	Switch Assembly (Incl items 16, 20, and 21)	X	1
18	B158-6	Heat Shrink	X	A/R
19	G136-3	Housing	X	2
20	B227-3	Lockwasher	X	1
21	B227-4	Dress Nut	X	1
22	C214-24	Plate	X	1
	C214-27	Plate (w/autopilot)	X	1
23	MS20470AD3	Rivet	X	2
24	NAS557-6A	Grommet	X	1
25	—	Nut (5/16 inch)	O	1
26	D443-6	Boot	X	1
27	B300-7	Switch Assembly (Incl item 20, 21, and 25)	X	1
28	B158-2	Heat Shrink	X	A/R
29	B158-3	Heat Shrink	X	A/R
30	MS35489-1	Grommet	X	1

NOTES

Continues

FIGURE AND INDEX NUMBER	PART NUMBER	DESCRIPTION	PARTS AVAIL	QTY PER ASSY
CARGO HOOK – RIGHT SIDE DETAILS (Cont'd)				
25-39-31	MS21042L08	Nut	X	5
32	1690	Plug (install using item 31)	X	1
33	B270-15	Adhesive	X	A/R
34	F445	Cover Assembly (Ref)		
35	A522-11	Control – Fuel Shutoff Valve (Ref)		
36	MS27039C0806	Screw	X	3
37	A522-15	Control (hook release; includes items 38 and 39)	X	1
38	G654-13	Decal	X	1
39	F348-1	Anchor Assembly (Ref)		
40	—	Washer	O	1
41	—	Nut	O	1
42	G138-1	Support	X	1
43	A522-14	Control (Ref, cabin heat)		
44	NAS9301B-4-01	Rivet	X	1
45	MS24665-134	Cotter Pin	X	2
46	MS27039C0815	Screw	X	1
47	NAS1149FN816P	Washer	X	2
48	AN742-3	Clamp (Ref)		
49	D676-3	Cable Assembly (Ref, see Figure 25-27)		
50	G135-2	Clamp	X	2
51	G135-1	Splitter	X	1
52	MS27039C0813	Screw	X	2
53	MS27039C0814	Screw	X	1
54	G135-3	Plate Assembly	X	1
55	MS20470AD4	Rivet	X	1
56	A522-16	Control (Ref; hook release, left seat, see Figure 25-35)		

NOTES * Onboard Systems part no.

Intentionally Blank

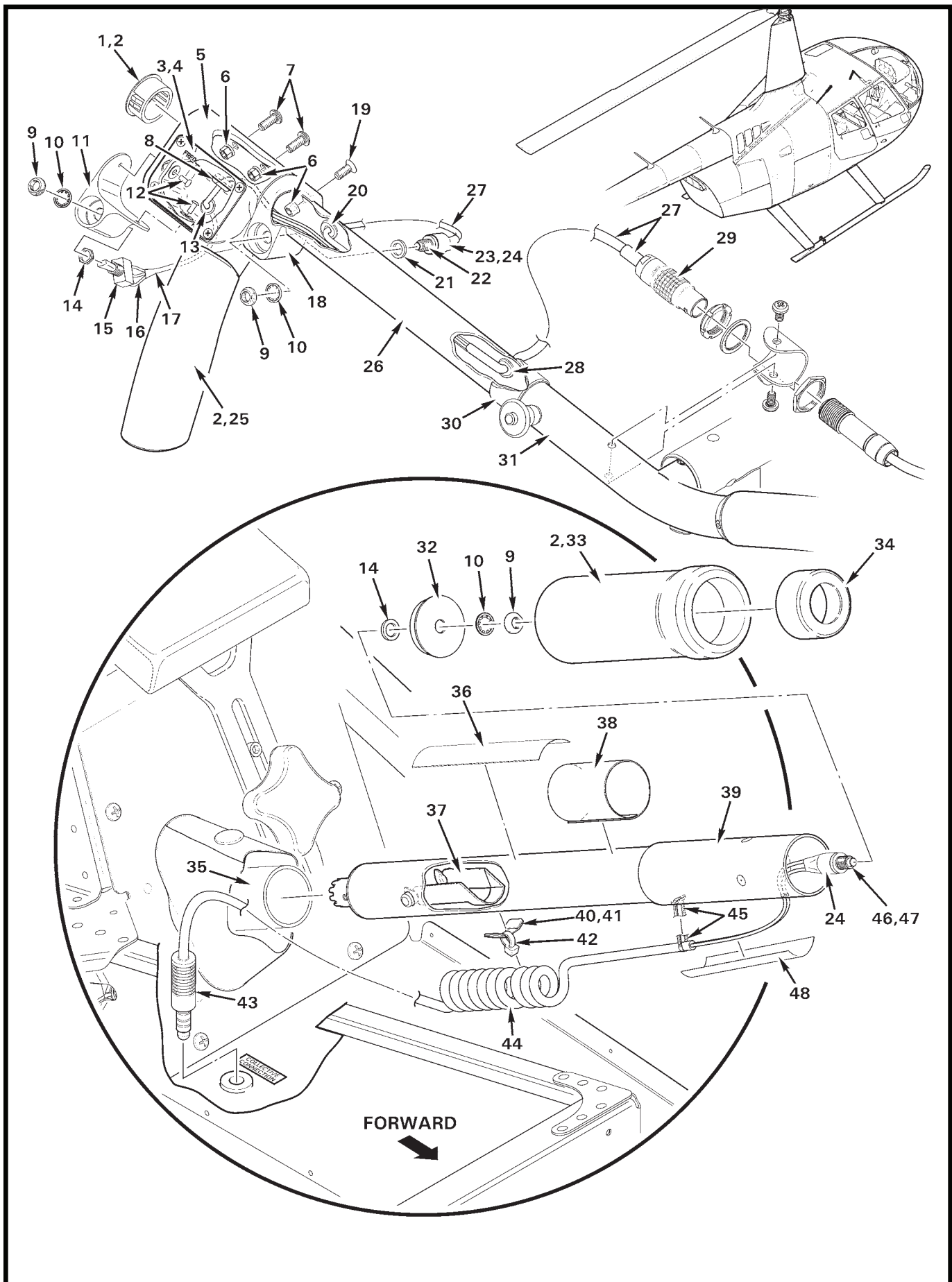


FIGURE AND INDEX NUMBER	PART NUMBER	DESCRIPTION	PARTS AVAIL	QTY PER ASSY
CARGO HOOK – LEFT SEAT FLIGHT CONTROLS				
25-43-1	2703	Plug (install using item 2)	X	1
2	B270-15	Adhesive	X	A/R
3	C214-24	Plate	X	1
4	C214-27	Plate (w/autopilot)	X	1
5	D379-1	Grip	X	1
6	MS21042L08	Nut	X	3
7	MS27039C0806	Screw	X	2
8	NAS557-6A	Grommet	X	1
9	B227-4	Dress Nut	X	1
10	B227-3	Lockwasher	X	1
11	G136-3	Housing	X	1
12	MS20470AD3	Rivet	X	2
13	MS35489-1	Grommet	X	1
14	—	Nut (5/16 inch)	O	1
15	B300-7	Switch (Incl items 9, 10, and 14)	X	1
16	B158-2	Heat Shrink (covers wires)	X	A/R
17	B158-3	Heat Shrink (around covered wires)	X	A/R
18	G136-2	Housing	X	1
19	MS24694-S3	Screw	X	A/R
20	MS35489-33	Grommet	X	1
21	94773A770	Washer	X	1
22	B227-2	Switch (Incl items 9, 10, and 21)	X	1
23	B158-2	Heat Shrink (around wires, not shown)	X	A/R
24	B158-6	Heat Shrink (around covered wires)	X	A/R
25	D379-2	Cover (install item 2)	X	1
26	C058-13	Grip Assembly – Cyclic (Incl items 1 thru 3, 5 thru 8, 13, 15 thru 20, 22 thru 25, and 27 thru 30)	X	1
	C058-19	Grip Assembly – Cyclic (w/autopilot; includes items 1, 2, 4 thru 8, 13, 15 thru 20, 22 thru 25, and 27 thru 30)	X	1
27	B158-4	Heat Shrink	X	A/R
28	G1038	Grommet	X	1
29	FGG2B314KLAD62	Plug	X	1
30	A321-22	Collar	X	1
31	C058	Grip Assembly – Cyclic (Ref, RH pilot; see Figure 25-39)		
32	B252-9	Mount	X	1

NOTES

Continues

FIGURE AND INDEX NUMBER	PART NUMBER	DESCRIPTION	PARTS AVAIL	QTY PER ASSY
CARGO HOOK – LEFT SEAT FLIGHT CONTROLS (Cont'd)				
25-43-33	A601-1	Grip (install using item 2)	X	1
34	A959-2	Cap (install using item 2)	X	1
35	C758-1	Stick Assembly (Ref; pilot)		
36	A654-21	Decal	X	1
37	A795-7	Pin	X	1
38	G654-3	Decal	X	1
39	C758-4	Stick Assembly – Collective (co-pilot; includes items 2, 32 thru 34, 36 thru 38, 40, 42 thru 46, and 48)	X	1
40	B252-10	Anchor Assembly (Incl item 41)	X	1
41	A701-7	Tape (black foam; self adhesive)		
42	MS3367-4-0	Ty-rap	X	1
43	TP-120	Plug	X	1
44	WMEC222-CL	Cable	X	1
45	B268-3	Lacing Tape	X	A/R
46	B280-5	Switch Assembly (Incl items 24 and 47)	X	1
47	B227-2	Switch (Incl items 9, 10, and 14)	X	1
48	A701-1	Tape	X	A/R
NOTES				

Intentionally Blank

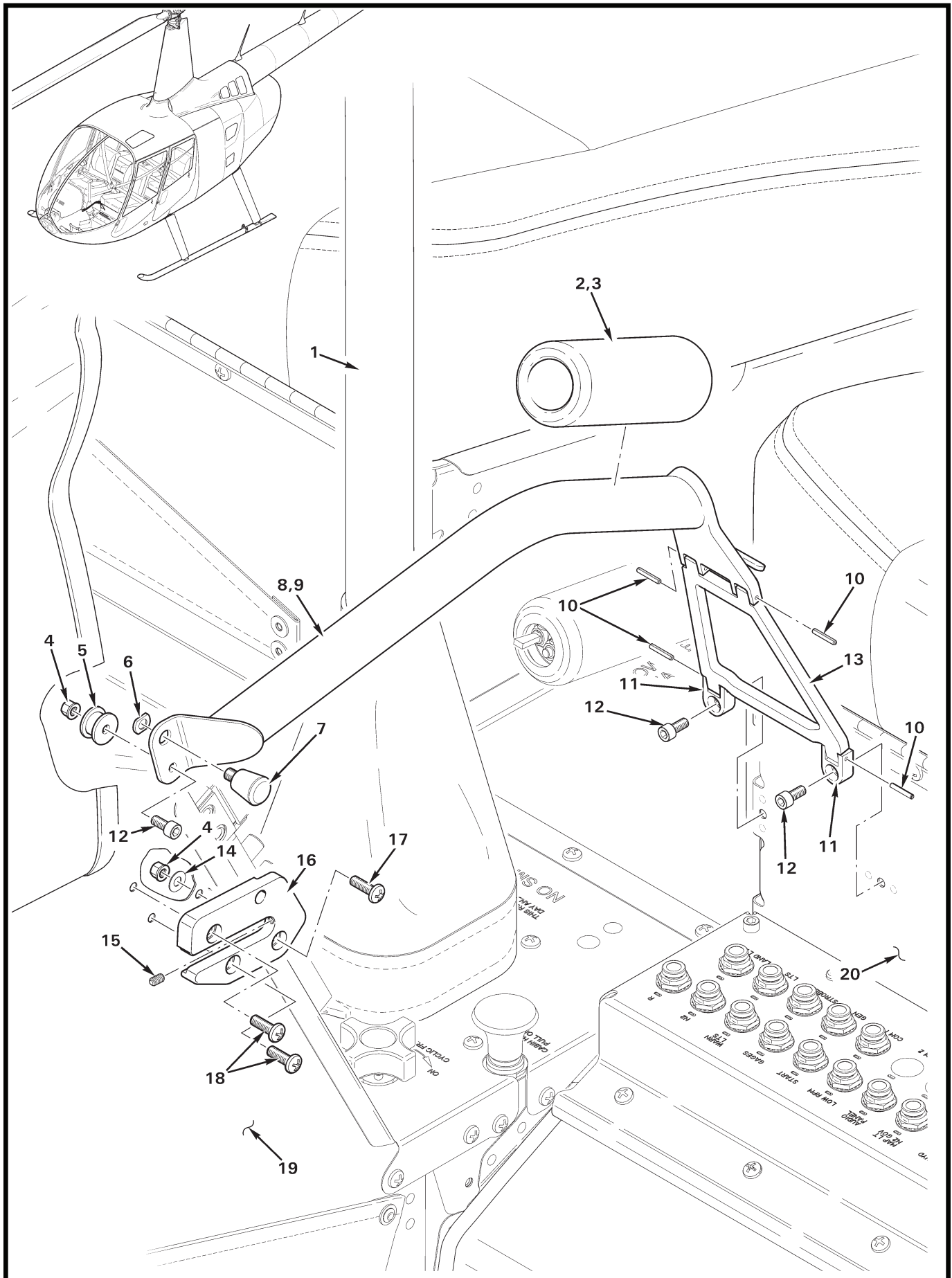


FIGURE AND INDEX NUMBER	PART NUMBER	DESCRIPTION	PARTS AVAIL	QTY PER ASSY
GUARD ASSEMBLY INSTALLATION				
25-47-1	C069	Cyclic Control Assembly (Ref)		
2	A601-2	Grip (install using item 3)	X	1
3	B270-15	Adhesive	X	A/R
4	MS21042L08	Nut	X	2
5	G722-7	Latch	X	1
6	—	Sleeve (threaded; Ref)		
7	56-99-196-20	Plunger (Incl item 6)	X	1
8	G721-1	Guard Assembly (Incl items 2 thru 5, 7, 9 thru 11, and 13). . .	X	1
9	G721-2	Weldment	X	1
10	MS16562-15	Spring Pin	X	4
11	G722-5	Mount	X	2
12	NAS1352-08-6	Screw	X	3
13	G722-4	Support – Lower	X	1
14	NAS1149FN816P	Washer	X	1
15	R3592*	Set Screw (6-32 x 1/4)	X	1
16	G722-6	Plate	X	1
17	MS27039C0807	Screw	X	1
18	MS27039C0808	Screw	X	2
19	F033	Console Assembly – Lower (Ref)		
20	F297-2	Support Assembly (LH, forward; Ref)		

NOTES * Adjust set screw to limit fwd/aft movement to 0.015 inch max and allow spring pin to fully engage.

Intentionally Blank