

**CHAPTER 21****ENVIRONMENT CONTROL**

<i>Figure</i>	<i>Title</i>	<i>Page</i>
21-1	Cabin Air Vent – Control Installation . . . . .	21.0
21-3	Air Conditioning – Compressor Assembly Installation . . . . .	21.2
21-7	Air Conditioning – Condenser Installation . . . . .	21.6
21-11	Air Conditioning – Evaporator Assembly Installation . . . . .	21.10
21-11B	Air Conditioning – Evaporator Drain Installation . . . . .	21.11A
21-13	Air Conditioning – Evaporator Drain Installation . . . . .	21.12
21-15	Air Conditioning – Evaporator Electrical Components . . . . .	21.14
21-17	Air Conditioning – Hose Assemblies . . . . .	21.16
21-19	Air Conditioning – Line Assemblies . . . . .	21.18
21-21	Air Conditioning – Duct Assembly Installation . . . . .	21.20
21-25	Air Conditioning – Furnishings . . . . .	21.24
21-27	Air Conditioning – Electrical Components . . . . .	21.26
21-31	Cabin Heater – Control Installation . . . . .	21.30
21-33	Cabin Heater – Forward Components Installation . . . . .	21.32
21-35	Cabin Heater – Muffler & Control Valve Installation . . . . .	21.34
21-39	Cabin Heater – Aft Components Installation . . . . .	21.38

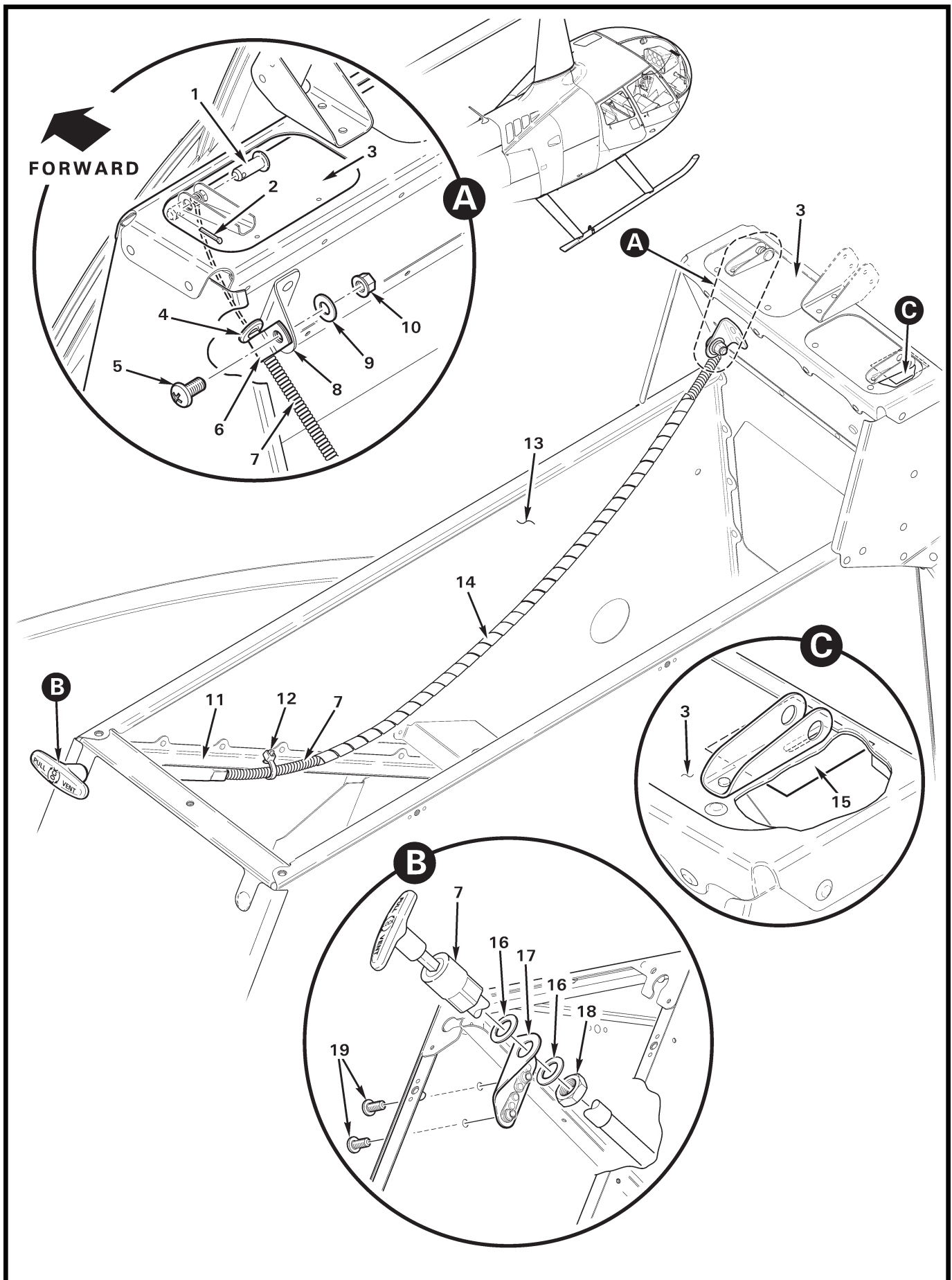
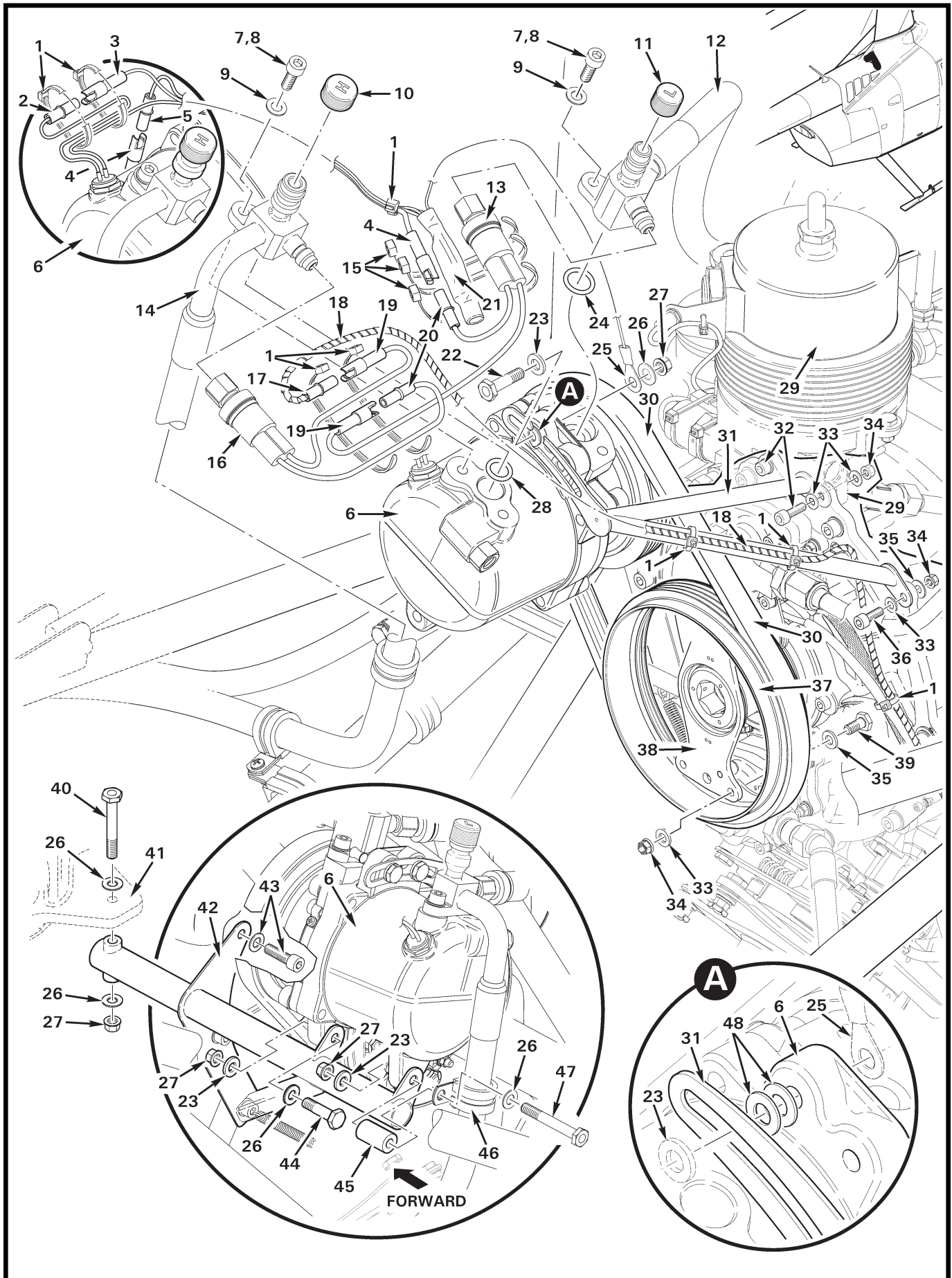


FIGURE AND INDEX NUMBER	PART NUMBER	DESCRIPTION	PARTS AVAIL	QTY PER ASSY
<b>CABIN AIR VENT – CONTROL INSTALLATION</b>				
21-1-1	MS20392-2C13	Pin . . . . .	X	1
2	MS24665-86	Cotter Pin . . . . .	X	1
3	C358-4	Flap (door; Ref)		
4	MS35489-4	Grommet . . . . .	X	1
5	MS27039C1-06	Screw . . . . .	X	1
6	AN742-3	Clamp . . . . .	X	1
7	C522-5*	Control Assembly – Cabin Air (Incl items 16 and 18) . . . . .	X	1
8	A523-6	Angle (Ref)		
9	NAS1149F0332P	Washer . . . . .	X	1
10	D210-3	Nut . . . . .	X	1
11	F365-1	Angle (Ref)		
12	MS3367-5-9	Ty-Rap . . . . .	X	1
13	F359	Panel (Ref)		
14	B161-4	Spirap (optional to protect adjacent wires) . . . . .	X	A/R
15	A701-1	Tape (install on underside of item 3, RH; to cover unused slot)	X	A/R
16	—	Washer . . . . .	O	2
17	C365-13	Mount Assembly . . . . .	X	1
18	—	Nut . . . . .	O	1
19	MS27039C0806	Screw . . . . .	X	2

NOTES \* Install with knob horizontal within 15 degrees when locked. Clearance under knob to be 0.03 to 0.10 inch with knob fully depressed.



Page 21.2 FIGURE 21-3 AIR CONDITIONING – COMPRESSOR ASSEMBLY INSTALLATION JAN 2023

FIGURE AND INDEX NUMBER	PART NUMBER	DESCRIPTION	PARTS AVAIL	QTY PER ASSY
<b>AIR CONDITIONING – COMPRESSOR ASSEMBLY INSTALLATION</b>				
21-3-1	MS3367-4-9	Ty-Rap . . . . .	X	A/R
2	B263-11	Housing . . . . .	X	1
	B263-4	Socket . . . . .	X	1
3	B263-10	Housing . . . . .	X	2
	B263-1	Pin . . . . .	X	2
4	B263-10	Housing . . . . .	X	2
	B263-3	Pin . . . . .	X	2
5	B263-11	Housing . . . . .	X	1
	B263-2	Socket . . . . .	X	1
6	G777-1	Compressor Assembly (Incl items 2 and 4) . . . . .	X	1
7	91292A135	Screw (install using one drop item 8 on threads) . . . . .	X	2
8	B270-20	Adhesive . . . . .	X	A/R
9	NAS620-416L	Washer . . . . .	X	2
10	MT0311	Cap – Valve (light blue plastic, high pressure port) . . . . .	X	1
11	MT0310	Cap – Valve (light blue plastic, low pressure port) . . . . .	X	1
12	G794-1	Hose Assembly (Ref)		
13	D799-3	Switch Assembly (low-pressure cutout; includes items 19 and 20) . . . . .	X	1
14	G794-2	Hose Assembly (Ref)		
15	MS3367-5-9	Ty-Rap . . . . .	X	3
16	D799-9	Switch Assembly (high-pressure cutout; includes items 19 and 20) . . . . .	X	1
17	B263-11*	Housing . . . . .	X	1
	B263-2*	Socket . . . . .	X	1
18	B161-2*	Spirap . . . . .	X	A/R
19	B263-10	Housing . . . . .	X	2
	B263-3	Pin . . . . .	X	2
20	B263-11	Housing . . . . .	X	2
	B263-3	Pin . . . . .	X	2
21	G799-5	Snubber Assembly (Incl items 3, 5, and 25) . . . . .	X	1
22	NAS6604-11	Bolt . . . . .	X	2
23	NAS1149F0463P	Washer . . . . .	X	4
24	F215-2	O-Ring . . . . .	X	1
25	B260-5	Terminal . . . . .	X	1
26	NAS1149F0432P	Washer . . . . .	X	6

NOTES \* Included with F049-01 MRGB harness assembly.

Continues

FIGURE AND INDEX NUMBER	PART NUMBER	DESCRIPTION	PARTS AVAIL	QTY PER ASSY
<b>AIR CONDITIONING – COMPRESSOR ASSEMBLY INSTALLATION (Cont'd)</b>				
21-3-27	D210-4	Nut . . . . .	X	5
28	F215-1	O-Ring . . . . .	X	1
29	D211-3	Reservoir Assembly (Ref)		
30	B173-5	V-Belt . . . . .	X	1
31	G781-1	Arm Weldment . . . . .	X	1
32	NAS1351-3-16P	Screw . . . . .	X	2
33	NAS620-10L	Washer . . . . .	X	9
34	D210-3	Nut . . . . .	X	7
35	NAS1149F0332P	Washer . . . . .	X	5
36	NAS1351-3-10P	Screw . . . . .	X	1
37	G779-1	Pulley . . . . .	X	1
38	F908-1	Yoke Assembly (Ref; see Figure 63-3)		
39	NAS6603-4	Bolt . . . . .	X	4
40	NAS6604-22	Bolt . . . . .	X	1
41	F006-1	Main Rotor Gearbox Assembly (Ref; see Figure 63-3)		
42	G782-1	Mount Weldment . . . . .	X	1
43	-	Existing MRGB Hardware (Ref; see Figure 63-3)		
44	NAS6604-10	Bolt . . . . .	X	1
45	A130-43	Spacer . . . . .	X	1
46	MS21333-105	Clamp . . . . .	X	1
47	NAS6604-24	Bolt . . . . .	X	1
48	NAS1149F0432P*	Washer ([4] required each fastener. 0 – 4 washers required to fill any gap greater than 0.016 inch between items 6 and 31 [measured at inboard fastener]. Install remaining washers between items 23 and 31.) . . . . .	X	8

NOTES \* Washer positions on outboard bolt to be same as inboard bolt.

Intentionally Blank



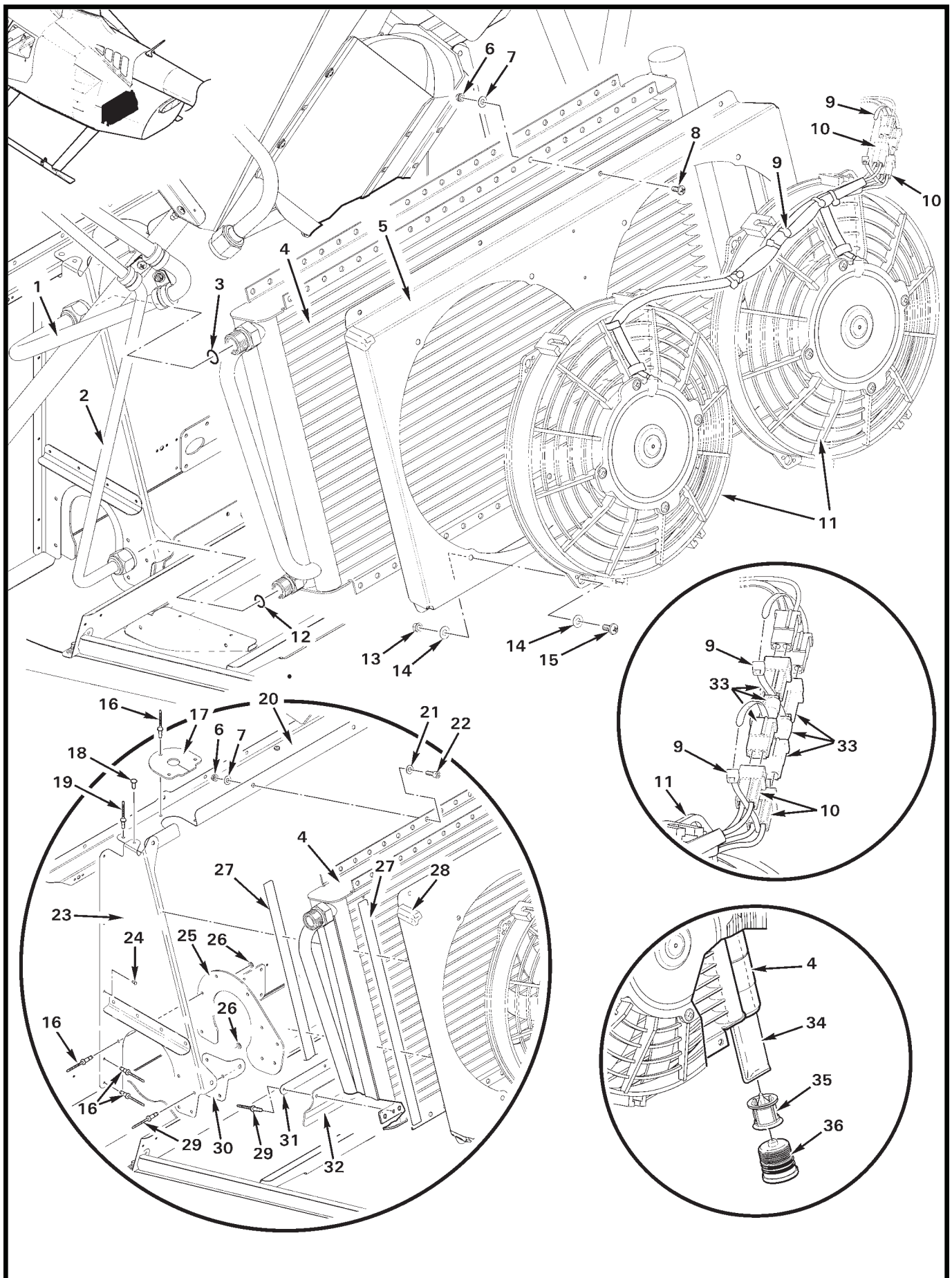




FIGURE AND INDEX NUMBER	PART NUMBER	DESCRIPTION	PARTS AVAIL	QTY PER ASSY
<b>AIR CONDITIONING – CONDENSER INSTALLATION</b>				
21-7-1	G810-1	Line Assembly (Ref)		
2	G811-1	Line Assembly (Ref)		
3	24608	O-Ring (Ref)		
4	G783-1	Condenser (Incl items 34 thru 36) . . . . .	X	1
5	G786-1	Box Assembly (Incl item 28) . . . . .	X	1
6	MS21042L08	Nut . . . . .	X	14
7	NAS1149FN816P	Washer . . . . .	X	14
8	MS27039C0806	Screw . . . . .	X	8
9	MS3367-5-9	Ty-Rap . . . . .	X	A/R
10	B263-12	Housing . . . . .	X	1
	B263-1	Pin . . . . .	X	2
11	G780-1	Fan Assembly (Incl item 10) . . . . .	X	2
12	24606	O-Ring (Ref)		
13	MS21042L3	Nut . . . . .	X	8
14	NAS1149F0316P	Washer . . . . .	X	16
15	MS27039C1-07	Screw . . . . .	X	8
16	NAS9301B-4-02	Rivet . . . . .	X	15
17	G788-3	Seal . . . . .	X	1
18	MS20470AD3	Rivet (or NAS9301B-4-02) . . . . .	X	2
19	NAS9301B-4-01	Rivet . . . . .	X	6
20	G785-1	Angle . . . . .	X	1
21	NAS620-10	Washer . . . . .	X	6
22	NAS1352-08-8P	Screw . . . . .	X	6
23	G787-1	Support (LH; includes items 16, 25, 26, 29, and 30) . . . . .	X	1
	G787-2	Support (RH; includes items 16, 25, 26, 29, and 30) . . . . .	X	1
24	MS20615-3M	Rivet (upper) . . . . .	X	6
25	G788-2	Seal . . . . .	X	1
26	NAS620-5	Washer . . . . .	X	8
27	93745K41	Seal (self-adhesive) . . . . .	X	A/R
28	A701-1	Foil Tape . . . . .	X	A/R
29	NAS9301B-4-03	Rivet ([4] required with item 23) . . . . .	X	7
30	G787-3	Bracket (LH) . . . . .	X	1
	G787-4	Bracket (RH) . . . . .	X	1
31	G785-2	Retainer . . . . .	X	1
32	G788-1	Seal . . . . .	X	1

NOTES

Continues

FIGURE AND INDEX NUMBER	PART NUMBER	DESCRIPTION	PARTS AVAIL	QTY PER ASSY
AIR CONDITIONING – CONDENSER INSTALLATION (Cont'd)				
21-7-33	G804-1	EMI Filter Assembly (condenser fan; installed on one or the other or both as required to eliminate Electromagnetic Interference in the radios from the condenser fans) . . . . .	X	A/R
34	G783-2	Desiccant Bag . . . . .	X	1
35	—	Filter . . . . .	O	1
36	—	Cap . . . . .	O	1

NOTES

Intentionally Blank

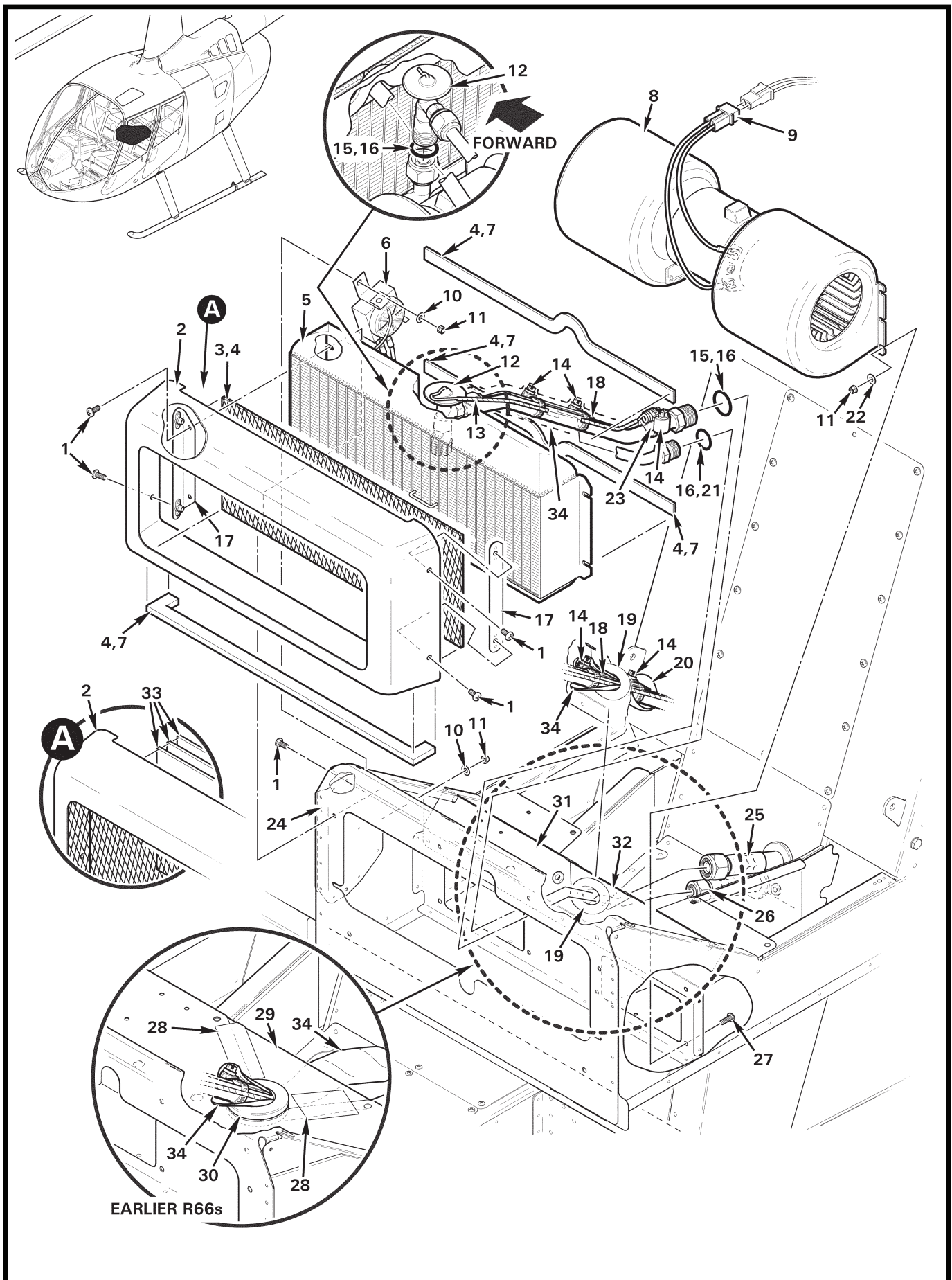
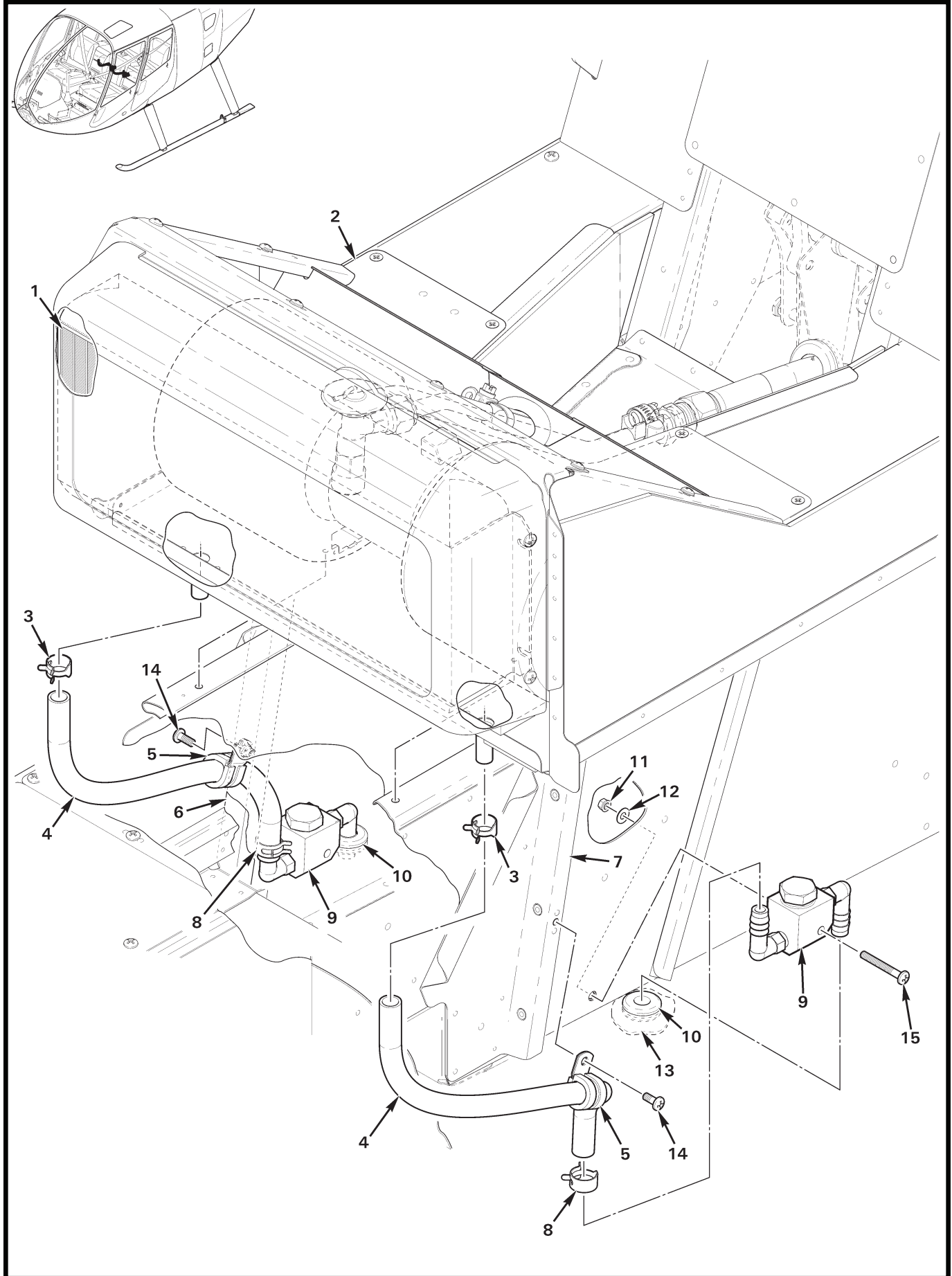


FIGURE AND INDEX NUMBER	PART NUMBER	DESCRIPTION	PARTS AVAIL	QTY PER ASSY
<b>AIR CONDITIONING – EVAPORATOR ASSEMBLY INSTALLATION</b>				
21-11-1	MS27039C0806	Screw . . . . .	X	8
2	G798-1	Cover Assembly (Incl items 3 and 4) . . . . .	X	1
3	F389-1	Screen (install using item 4) . . . . .	X	1
4	B270-1	Sealant . . . . .	X	A/R
5	G784-1	Evaporator Assembly . . . . .	X	1
6	D799-7	Switch Assembly – Freeze (Ref, see Figure 21-15)		
7	93745K41	Seal (install using item 4) . . . . .	X	A/R
8	G791-1	Blower Assembly (Incl item 9) . . . . .	X	1
9	G791-2	Harness Assembly (includes B263-12 housing, [2] B263-3 pins, -2295 & -2298 wires, and [2] B262-5 receptacle) . . . . .	X	1
10	NAS1149FN816P	Washer . . . . .	X	4
11	MS21042L08	Nut . . . . .	X	13
12	G778-1	Thermal Expansion Valve (TXV) . . . . .	X	1
13	B161-2	Spirap . . . . .	X	A/R
14	B277-8	Clamp . . . . .	X	3
15	F215-013	O-Ring (install using item 16) . . . . .	X	2
16	A257-20	Oil – Pag . . . . .	X	A/R
17	F385-8	Bracket Assembly . . . . .	X	2
18	D785-7	Cradle . . . . .	X	1
19	MS35489-20*	Grommet . . . . .	X	1
20	5541K11	Pipe Wrap (around inlet & outlet lines, nuts, cradle, & clamp) . . . . .	X	A/R
21	F215-011	O-Ring (install using item 16) . . . . .	X	2
22	NAS1149FN832P	Washer . . . . .	X	8
23	D785-2	Cradle . . . . .	X	1
24	F377-1	Support Assembly – Middle Seat (Ref)		
25	G794-1	Hose Assembly (Ref, see Figure 21-17)		
26	G794-3	Hose Assembly (Ref, see Figure 21-17)		
27	MS27039C0807	Screw . . . . .	X	8
28	A701-1	Tape (optional) . . . . .	X	A/R
29	F380-7	Cover (Ref)		
30	MS35489-23*	Grommet . . . . .	X	1
31	F393-1	Shield (Ref)		
32	F393-2	Cover (bend tabs on item 31 as required to retain) . . . . .	X	1
33	D812-9	Screen (as required for evaporator noise suppression; 3 max)	X	A/R
34	A701-17	Tape . . . . .	X	A/R

NOTES \* May be split and bonded at split after installation using B270-17 adhesive.



**Page 21.11A** FIGURE 21-11B AIR CONDITIONING – EVAPORATOR DRAIN INSTALLATION JAN 2023

FIGURE AND INDEX NUMBER	PART NUMBER	DESCRIPTION	PARTS AVAIL	QTY PER ASSY
<b>AIR CONDITIONING – EVAPORATOR DRAIN INSTALLATION</b>				
21-11B-1	G784-1	Evaporator Assembly (Ref, see Figure 21-11)		
2	F377-1	Seat Assembly – Middle, Aft (Ref)		
3	D277-8	Clamp . . . . .	X	2
4	A729-59	Tube . . . . .	X	2
5	MS21919WDG8	Clamp . . . . .	X	2
6	F382-6	Stiffener (RH; Ref)		
7	F382-5	Stiffener (LH; Ref)		
8	D277-9	Clamp (point prongs toward keel panel ± 90°) . . . . .	X	2
9	D789-11	Drain Assembly . . . . .	X	2
10	MS35489-11	Grommet . . . . .	X	2
11	MS21042L08	Nut . . . . .	X	2
12	NAS1149FN816P	Washer . . . . .	X	2
13	F387-1	Belly Panel (Ref)		
14	MS27039C0806	Screw . . . . .	X	2
15	MS27039C0820	Screw . . . . .	X	2
<b>NOTES</b>				



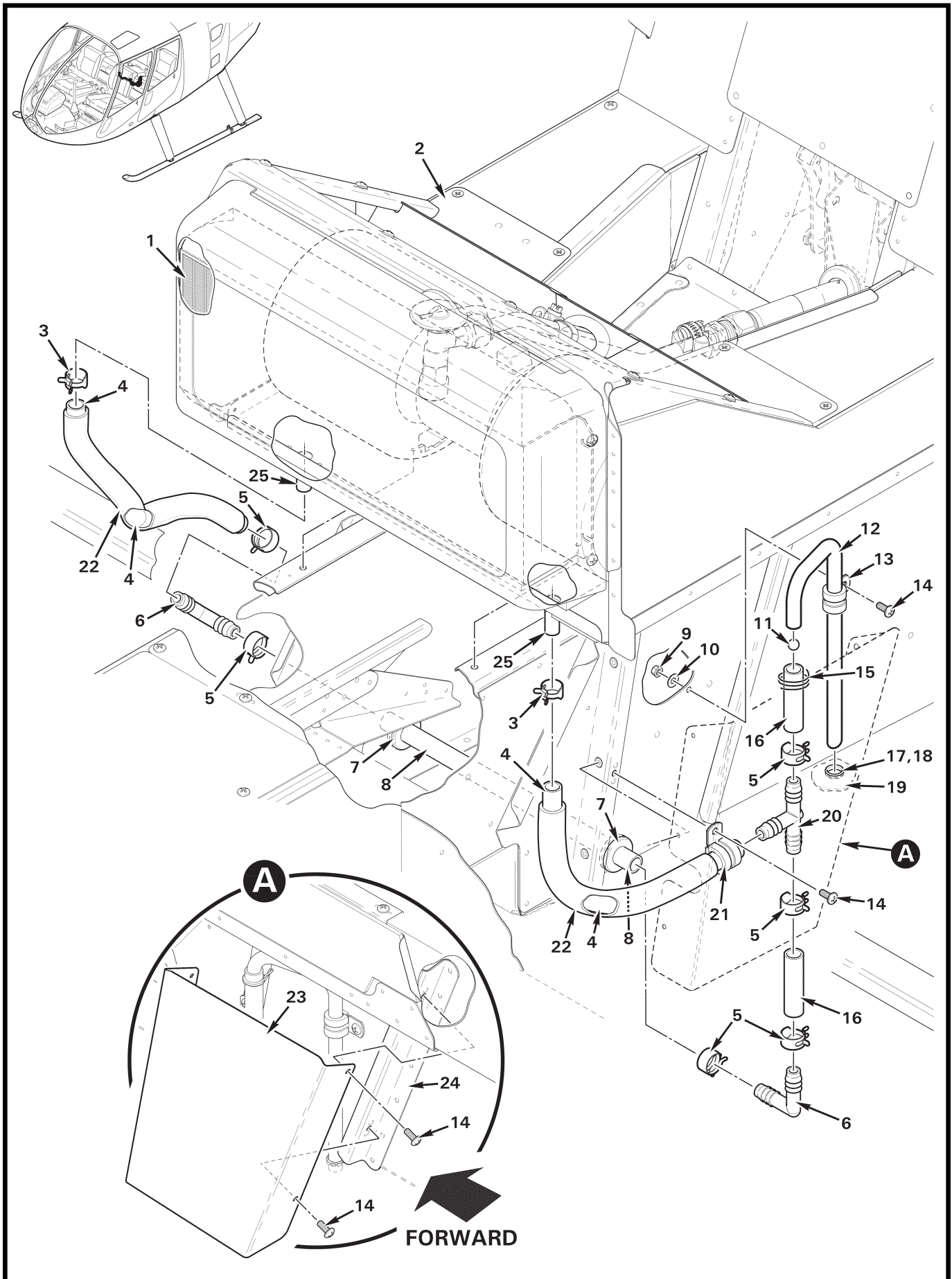


FIGURE AND INDEX NUMBER	PART NUMBER	DESCRIPTION	PARTS AVAIL	QTY PER ASSY
<b>AIR CONDITIONING – EVAPORATOR DRAIN INSTALLATION</b>				
21-13-1	G784-1	Evaporator Assembly (Ref, see Figure 21-11)		
2	F377-1	Seat Assembly – Middle, Aft (Ref)		
3	D277-8	Clamp . . . . .	X	2
4	A729-59	Hose . . . . .	X	2
5	D277-9	Clamp . . . . .	X	6
6	A457-7	Elbow . . . . .	X	2
7	MS35489-149	Grommet . . . . .	X	2
8	A729-58	Hose . . . . .	X	1
9	MS21042L08	Nut . . . . .	X	1
10	NAS1149FN816P	Washer . . . . .	X	1
11	B208-9	Ball . . . . .	X	1
12	D789-10	Tube . . . . .	X	1
13	MS21919WDG6	Clamp . . . . .	X	1
14	MS27039C0806	Screw . . . . .	X	4
15	MS20995C32	0.032 inch dia. Safety Wire . . . . .	X	A/R
16	A729-57	Hose . . . . .	X	2
17	NAS557-6A	Grommet (install using item 18; seal all around grommet and tube, both sides of belly panel) . . . . .	X	1
18	B270-1	Sealant . . . . .	X	A/R
19	F387-1	Belly Panel (Ref)		
20	A457-1	Tee . . . . .	X	1
21	MS21919WDG8	Clamp . . . . .	X	1
22	5541K11	Pipe Wrap . . . . .	X	A/R
23	G789-1	Cover . . . . .	X	1
24	F466-3	Stiffener (Ref)		
25	A456-1	Drain . . . . .	X	2

NOTES

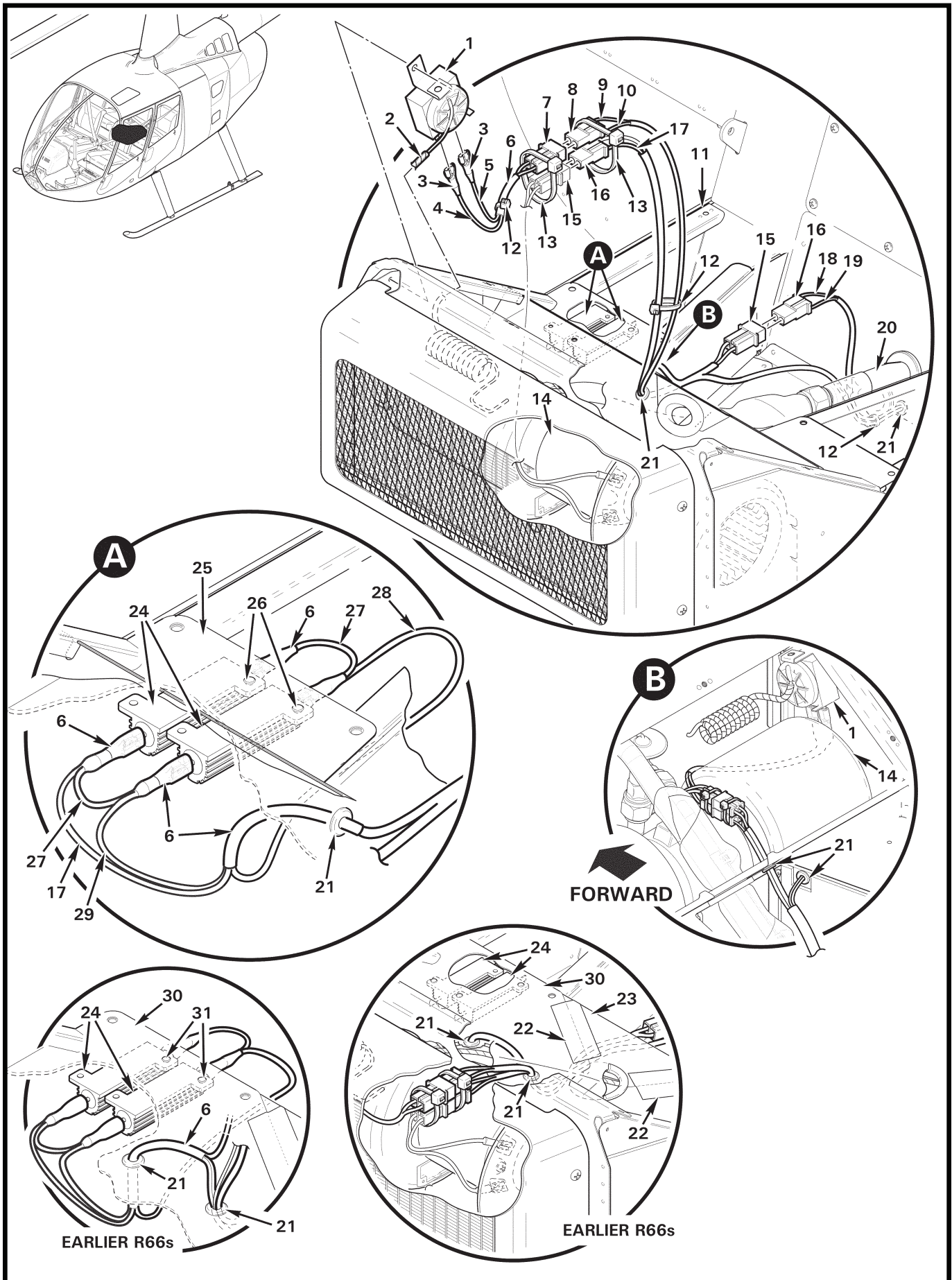


FIGURE AND INDEX NUMBER	PART NUMBER	DESCRIPTION	PARTS AVAIL	QTY PER ASSY
<b>AIR CONDITIONING – EVAPORATOR ELECTRICAL COMPONENTS</b>				
21-15-1	D799-7	Switch Assembly – Freeze (Incl items 3 thru 7, see Figure 21-11) . . . . .	X	1
2	B161-2	Spirap . . . . .	X	A/R
3	B158-4	Heat Shrink . . . . .	X	A/R
4	-1804	Wire (Ref)		
5	-1809	Wire (Ref)		
6	B158-3	Heat Shrink . . . . .	X	A/R
7	B263-32	Housing . . . . .	X	1
	B263-1	Pin . . . . .	X	2
8	B263-33	Housing . . . . .	X	1
	B263-2	Socket . . . . .	X	2
9	-2299	Wire (Ref)		
10	-2294	Wire (Ref)		
11	F377-1	Support Assembly – Middle Seat (Ref)		
12	MS3367-4-9	Ty-Rap . . . . .	X	A/R
13	MS3367-5-9	Ty-Rap . . . . .	X	A/R
14	G791-1	Blower Assembly (Ref, see Figure 21-11)		
15	B263-12	Housing (Ref)		
16	B263-4	Socket . . . . .	X	1
17	-2295	Wire (Ref)		
18	-2365	Wire (Ref)		
19	-2364	Wire (Ref)		
20	G794-1	Hose Assembly (Ref, see Figure 21-17)		
21	MS35489-4	Grommet . . . . .	X	3
22	A701-1	Tape (Ref; optional, earlier R66s)		
23	F380-7	Cover (Ref; earlier R66s)		
24	G799-2	Resistor Assembly (Incl items 3, 6, 16, 17, and 27 thru 29)	X	2
25	F378-4	Panel (Ref)		
26	MS20604ML4W2	Rivet . . . . .	X	4
27	B274-14	Wire . . . . .	X	2
28	-2365	Wire (Ref)		
29	-2364	Wire (Ref)		
30	F380-6	Panel (Ref; earlier R66s)		
31	B204-1	Rivet (earlier R66s) . . . . .	X	2

NOTES

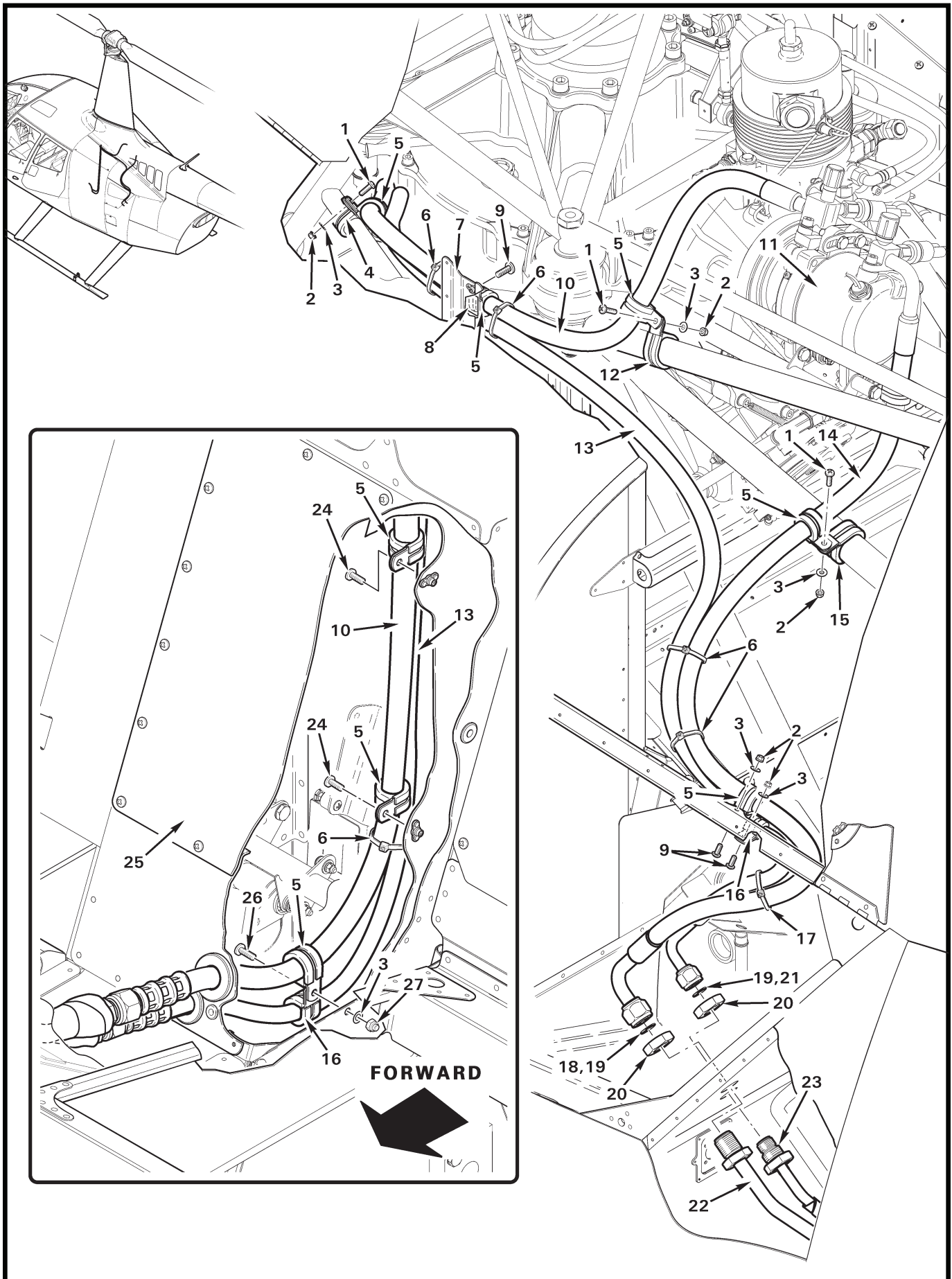


FIGURE AND INDEX NUMBER	PART NUMBER	DESCRIPTION	PARTS AVAIL	QTY PER ASSY
<b>AIR CONDITIONING – HOSE ASSEMBLIES</b>				
21-17-1	MS27039C0808	Screw . . . . .	X	3
2	MS21042L08	Nut . . . . .	X	5
3	NAS1149FN816P	Washer . . . . .	X	6
4	MS21919WDG12	Clamp . . . . .	X	1
5	MS21919WDG11	Clamp . . . . .	X	8
6	MS3367-5-9	Ty-Rap . . . . .	X	A/R
7	F231-3	Stiffener (Ref)		
8	A701-5	Tape (anti-chafe) . . . . .	X	A/R
9	MS27039C0806	Screw . . . . .	X	3
10	G794-1	Hose Assembly . . . . .	X	1
11	G777-1	Compressor Assembly (Ref)		
12	MS21919WDG16	Clamp . . . . .	X	1
13	G794-3	Hose Assembly . . . . .	X	1
14	G794-2	Hose Assembly . . . . .	X	1
15	MS21919WDG18	Clamp . . . . .	X	1
16	MS21919WDG9	Clamp (around item 13) . . . . .	X	2
17	MS3367-5-0	Ty-Rap . . . . .	X	1
18	24608	O-Ring (install using item 19) . . . . .	X	1
19	A257-20	Pag Oil . . . . .	X	A/R
20	AN924-8D	Nut . . . . .	X	2
21	24606	O-Ring (install using item 19) . . . . .	X	1
22	G810-1	Line Assembly (Ref)		
23	G811-1	Line Assembly (Ref)		
24	MS27039C0807	Screw . . . . .	X	2
25	F474-2	Cover Assembly (Ref; behind aft center back rest assembly)		
26	MS27039C0810	Screw . . . . .	X	1
27	B340-4	Nut . . . . .	X	1
<b>NOTES</b>				



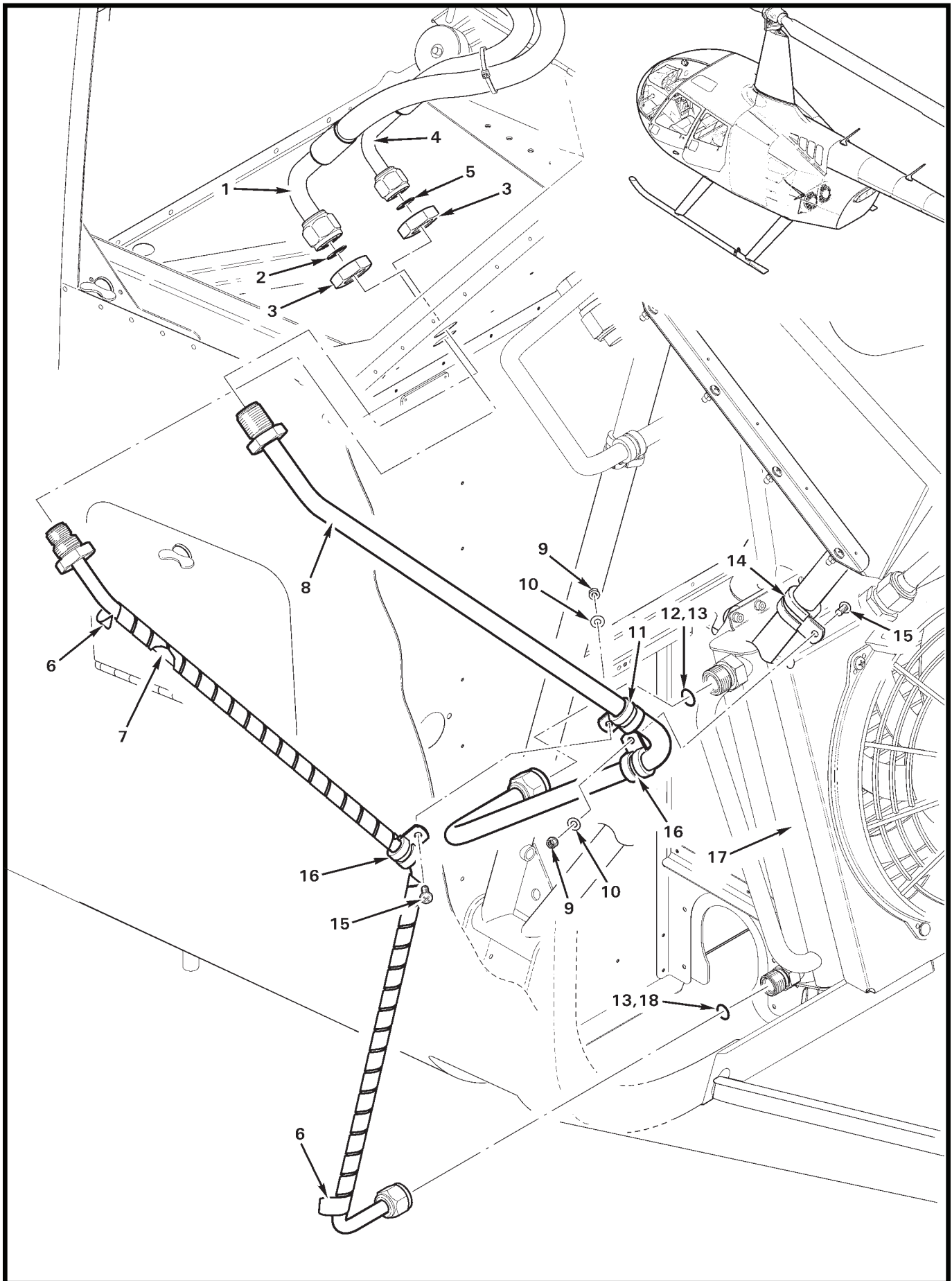




FIGURE AND INDEX NUMBER	PART NUMBER	DESCRIPTION	PARTS AVAIL	QTY PER ASSY
<b>AIR CONDITIONING – LINE ASSEMBLIES</b>				
21-19-1	G794-2	Hose Assembly (Ref)		
2	24608	O-Ring (Ref)		
3	AN924-8D	Nut . . . . .	X	2
4	G794-3	Hose Assembly (Ref)		
5	24606	O-Ring (Ref)		
6	B161-108	Spirap (high temperature; Orange PTFE [Teflon]) . . . . .	X	A/R
7	G811-1	Line Assembly (high pressure) . . . . .	X	1
8	G810-1	Line Assembly (low pressure) . . . . .	X	1
9	MS21042L08	Nut . . . . .	X	2
10	NAS1149FN816P	Washer . . . . .	X	2
11	MS21919WCHG8	Clamp . . . . .	X	1
12	24608	O-Ring (install using item 13) . . . . .	X	1
13	A257-20	Pag Oil . . . . .	X	A/R
14	MS21919WCHG12	Clamp (around frame tube) . . . . .	X	1
15	MS27039C0806	Screw . . . . .	X	2
16	MS21919WCHG6	Clamp . . . . .	X	2
17	G783-1	Condenser Assembly (Ref, see Figure 21-7)		
18	24606	O-Ring (install using item 13) . . . . .	X	1

NOTES

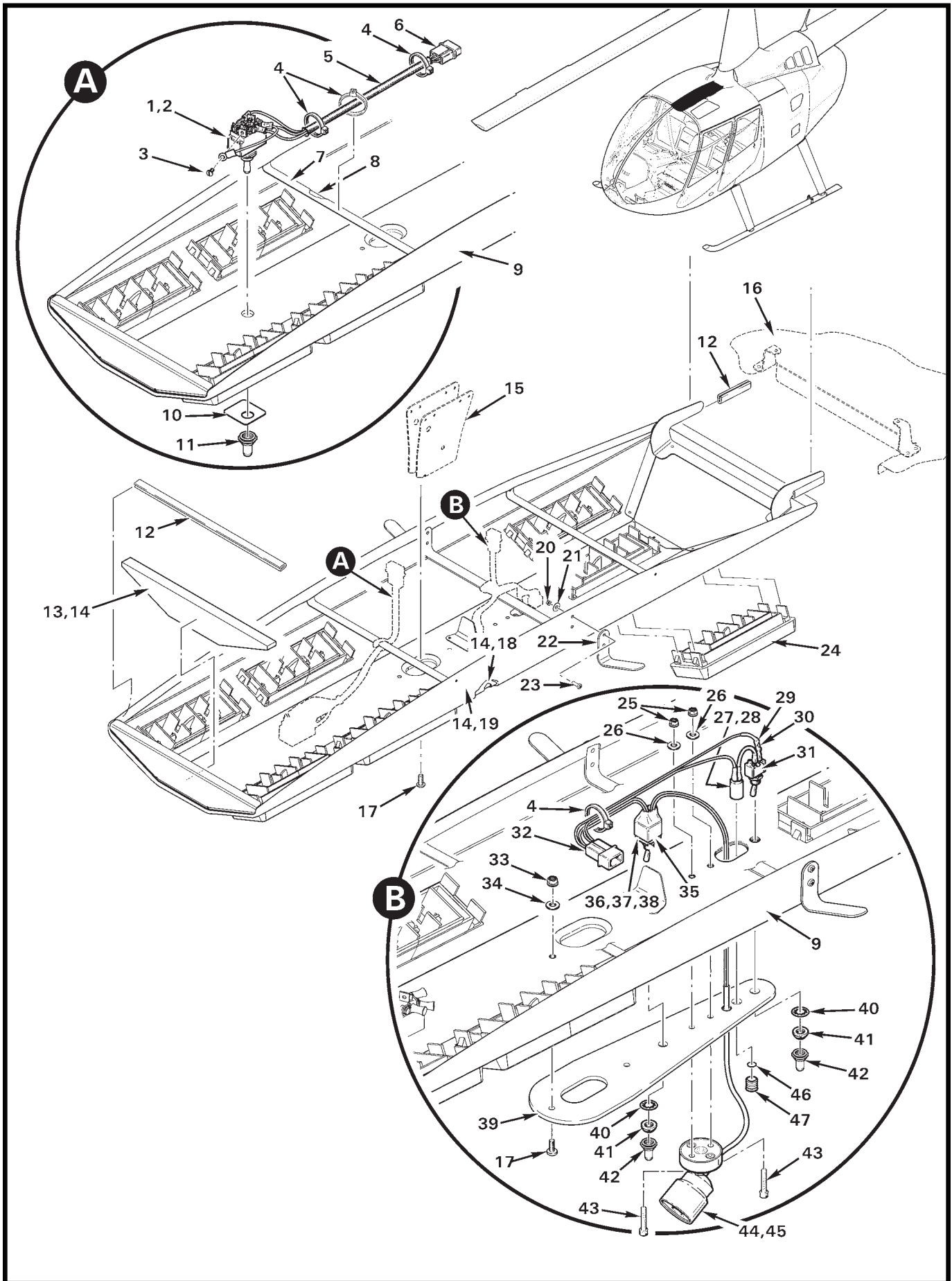


FIGURE AND INDEX NUMBER	PART NUMBER	DESCRIPTION	PARTS AVAIL	QTY PER ASSY
		<b>AIR CONDITIONING – DUCT ASSEMBLY INSTALLATION</b>		
21-21-1	G799-3	Switch Assembly (Incl items 2, 4 [2], 5, 6, and 11) . . . . .	X	1
2	MS25201-4	Switch (includes lockwasher, nut, and item 3) . . . . .	X	1
3	—	Screw (Ref)		
4	MS3367-4-9	Ty-Rap . . . . .	X	4
5	B266-4	Sleeving . . . . .	X	A/R
6	B263-14	Housing . . . . .	X	1
	B263-1	Pin . . . . .	X	3
7	B158-6	Heat Shrink . . . . .	X	A/R
8	G797-5	Strip (Ref)		
9	G796-1*	Duct Assembly (Incl items 1, 4, 7, 8, 10, 12 thru 14, 17 thru 26, 33, 34, and 43) . . . . .	X	1
10	D122-4	Plate . . . . .	X	1
11	C1131/28	Boot . . . . .	X	1
12	A226-15	Trim . . . . .	X	A/R
13	D812-8	Insulation (install using item 14) . . . . .	X	A/R
14	B270-8qt	Adhesive (or B270-14) . . . . .	X	A/R
15	D122-8	Bracket Assembly (Ref, see Figure 21-25)		
16	G790-1	Duct Assembly (Ref)		
17	MS27039C0807	Screw . . . . .	X	3
18	B298-102*	Foam (install using item 14) . . . . .	X	A/R
19	B298-31*	Headliner . . . . .	X	A/R
	B298-33*	Headliner . . . . .	X	A/R
	B298-34*	Headliner . . . . .	X	A/R
20	MS21042L04	Nut . . . . .	X	2
21	NAS1149FN416P	Washer . . . . .	X	2
22	A752-1	Angle . . . . .	X	2
23	MS35206-215	Screw . . . . .	X	4
24	10.124.63	Louver and Bezel Assembly . . . . .	X	7
25	MS21042L06	Nut . . . . .	X	2
26	NAS1149FN616P	Washer . . . . .	X	2
27	CNX310000X4112	Connector . . . . .	X	1
28	E1003	LED (not shown) . . . . .	X	1
29	B158-2	Heat Shrink . . . . .	X	A/R
30	B0207C1K210F5T	Resistor . . . . .	X	1

NOTES \* Please specify color (blue, grey, or tan).

Continues

FIGURE AND INDEX NUMBER	PART NUMBER	DESCRIPTION	PARTS AVAIL	QTY PER ASSY
<b>AIR CONDITIONING – DUCT ASSEMBLY INSTALLATION (Cont'd)</b>				
21-21-31	B300-1	Switch (Incl items 40 and 41) . . . . .	X	1
	B158-2	Heat Shrink (around leads) . . . . .	X	A/R
32	B263-12	Housing . . . . .	X	1
	B263-1	Pin . . . . .	X	2
33	MS21042L08	Nut . . . . .	X	1
34	NAS1149FN816P	Washer . . . . .	X	1
35	B158-12	Heat Shrink . . . . .	X	A/R
36	B300-5	Switch Assembly (Incl items 40 and 41) . . . . .	X	1
37	B0207C1K650F5T	Resistor (not shown) . . . . .	X	1
38	B0207C3K400F5T	Resistor (not shown) . . . . .	X	1
39	D122-6	Plate . . . . .	X	1
40	B227-3	Lockwasher . . . . .	X	1
41	B277-4	Dress Nut . . . . .	X	1
42	N-5030S	Boot . . . . .	X	1
43	NAS1352-06-10P	Screw . . . . .	X	2
44	D606-1	Spotlight . . . . .	X	1
45	D799-8	Light Assembly (Incl items 4, 27 thru 32, 35 thru 39, 42, 44, 46, and 47) . . . . .	X	1
46	A215-008	O-Ring . . . . .	X	1
47	CMC321-CTP	Lens . . . . .	X	1

NOTES

Intentionally Blank

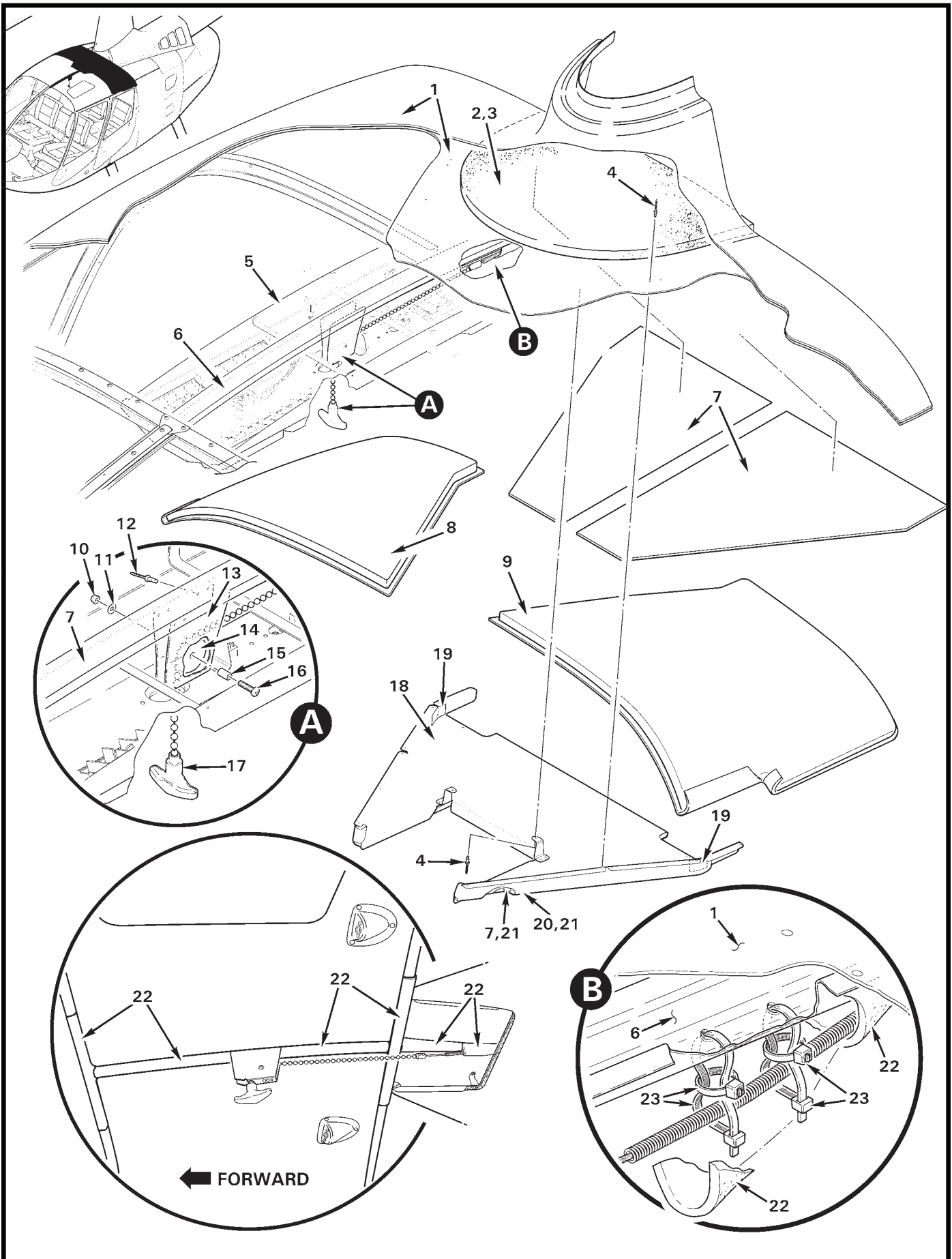


FIGURE AND INDEX NUMBER	PART NUMBER	DESCRIPTION	PARTS AVAIL	QTY PER ASSY
<b>AIR CONDITIONING – FURNISHINGS</b>				
21-25-1	F273-1	Roof (Ref)		
2	B298-104	Foam (install using item 3) . . . . .	X	A/R
3	B270-8qt	Adhesive . . . . .	X	A/R
4	NAS9301B-4-03	Rivet . . . . .	X	16
5	G796-1	Duct Assembly (Ref)		
6	F087-3	Support (Ref)		
7	B298-102	Foam (install using item 21) . . . . .	X	A/R
8	F003-18	Insulation (RH, install using item 3) . . . . .	X	1
9	F003-17	Insulation (LH, install using item 3) . . . . .	X	1
10	MS21042L08	Nut . . . . .	X	1
11	NAS1149FN816P	Washer . . . . .	X	1
12	NAS9301B-4-02	Rivet . . . . .	X	8
13	D122-8	Bracket . . . . .	X	1
14	BP4100	Pulley . . . . .	X	1
15	A130-34	Spacer . . . . .	X	1
16	MS27039C0812	Screw . . . . .	X	1
17	B033-6	Knob Assembly (Ref)		
18	G790-1 *	Duct Assembly (Incl items 7, 19, 20, and 21) . . . . .	X	1
19	A701-1	Foil Tape (covers corner relief) . . . . .	X	A/R
20	B298-31 *	Headliner (blue) . . . . .	X	A/R
	B298-33 *	Headliner (grey) . . . . .	X	A/R
	B298-34 *	Headliner (tan) . . . . .	X	A/R
21	B270-14	Adhesive . . . . .	X	A/R
22	5541K11	Pipe Wrap (item 5 not shown for clarity) . . . . .	X	A/R
23	MS3367-5-9	Ty-Rap . . . . .	X	4

NOTES \* Please specify color (blue, grey, or tan).



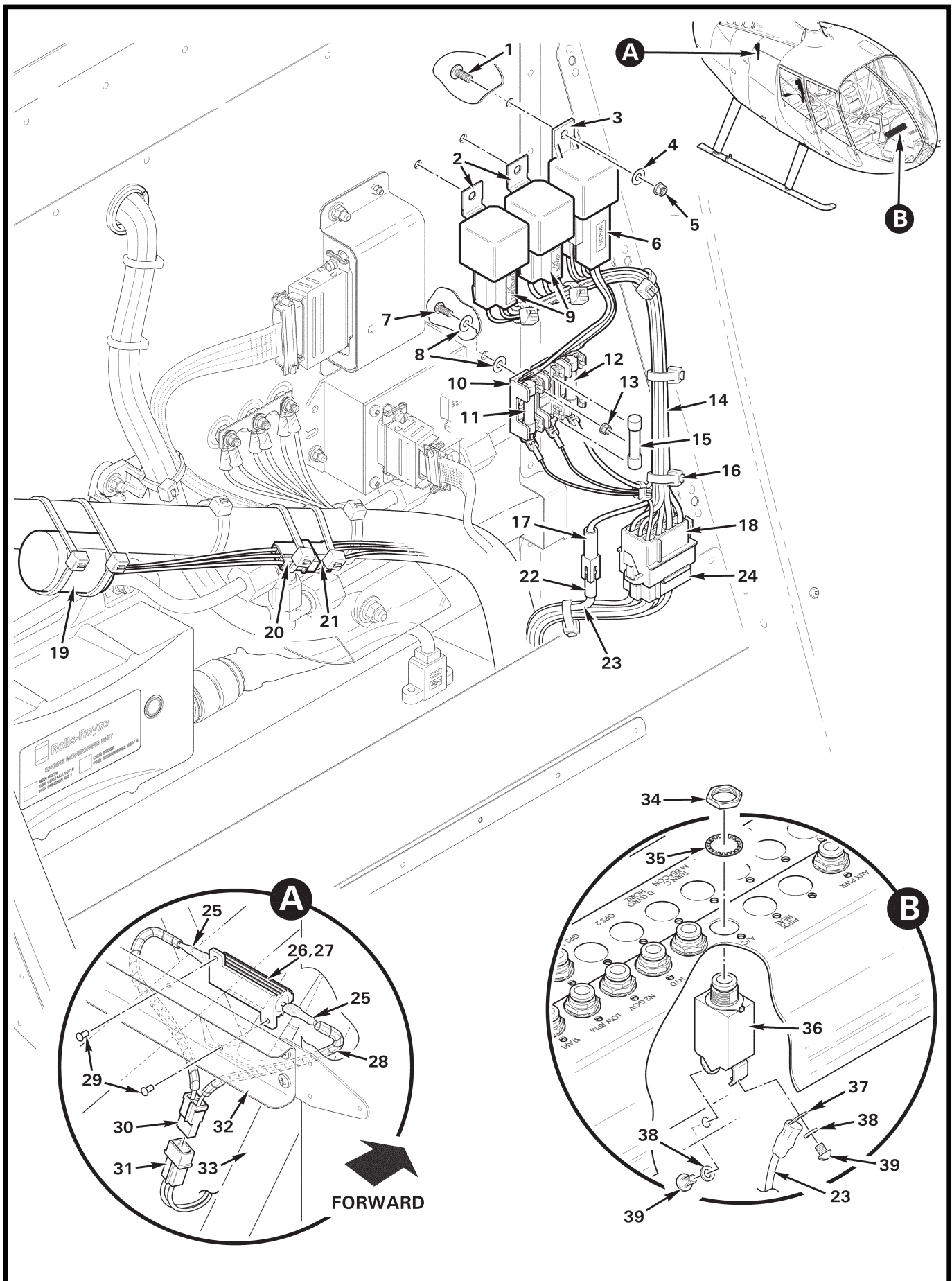


FIGURE AND INDEX NUMBER	PART NUMBER	DESCRIPTION	PARTS AVAIL	QTY PER ASSY
<b>AIR CONDITIONING – ELECTRICAL COMPONENTS</b>				
21-27-1	MS27039C0806	Screw . . . . .	X	3
2	D260-4	Relay (40 amp, 24 volt) . . . . .	X	2
3	D260-2	Relay (70 amp, 24 volt) . . . . .	X	1
4	NAS1149FN816P	Washer . . . . .	X	3
5	MS21042L08	Nut . . . . .	X	3
6	D260-5	Connector . . . . .	X	1
7	MS35206-227	Screw . . . . .	X	1
8	NAS1149FN616P	Washer . . . . .	X	2
9	D260-6	Connector . . . . .	X	2
10	D262-3	Fuse Block . . . . .	X	1
11	D275-205	Fuse (5 amp) . . . . .	X	1
12	D275-215	Fuse (15 amp) . . . . .	X	1
13	MS21042L06	Nut . . . . .	X	1
14	G799-4	Relay Assembly (Incl items 2, 3, 6, 9 thru 12, & 15 thru 18)	X	1
15	D275-210	Fuse (10 amp) . . . . .	X	1
16	MS3367-4-9	Ty-Rap . . . . .	X	A/R
17	B263-62	Housing . . . . .	X	1
	B263-55	Pin . . . . .	X	1
18	B263-22	Housing . . . . .	X	1
	B263-1	Pin . . . . .	X	9
	B263-3	Pin . . . . .	X	2
19	G655-3	Time Delay Assembly (includes item 20 and wires) . . . . .	X	1
20	B263-14	Housing . . . . .	X	1
	B263-1	Pin . . . . .	X	3
21	B263-15	Housing (Ref)		
22	B263-61	Housing (Ref)		
23	-2297	Wire (Ref)		
24	B263-23	Housing (Ref)		
25	B158-2	Heat Shrink (2 layers each joint) . . . . .	X	A/R
26	G799-1	Resistor Assembly (Incl items 25, 27, 28, and 30) . . . . .	X	1
27	RH0506R000FE02	Resistor (6 Ω 50w) . . . . .	X	1
28	B161-2	Spirap (length as required). . . . .	X	2
29	MS20604ML4W2	Rivet . . . . .	X	2
30	B263-12	Housing . . . . .	X	1
	B263-1	Pin . . . . .	X	2

NOTES

Continues

FIGURE AND INDEX NUMBER	PART NUMBER	DESCRIPTION	PARTS AVAIL	QTY PER ASSY
AIR CONDITIONING – ELECTRICAL COMPONENTS (Cont'd)				
21-27-31	B263-13	Housing (Ref)		
32	G258-4	Strap (Ref)		
33	F020-1	Upper Frame (Ref)		
34	—	Nut . . . . .	O	1
35	—	Lockwasher . . . . .	O	1
36	B297-25	Circuit Breaker (25 amp; includes 34, 35, 38 and 39) . . . . .	X	1
37	B260-11	Terminal (Ref)		
38	—	Lockwasher . . . . .	O	2
39	—	Screw . . . . .	O	2

NOTES

Intentionally Blank

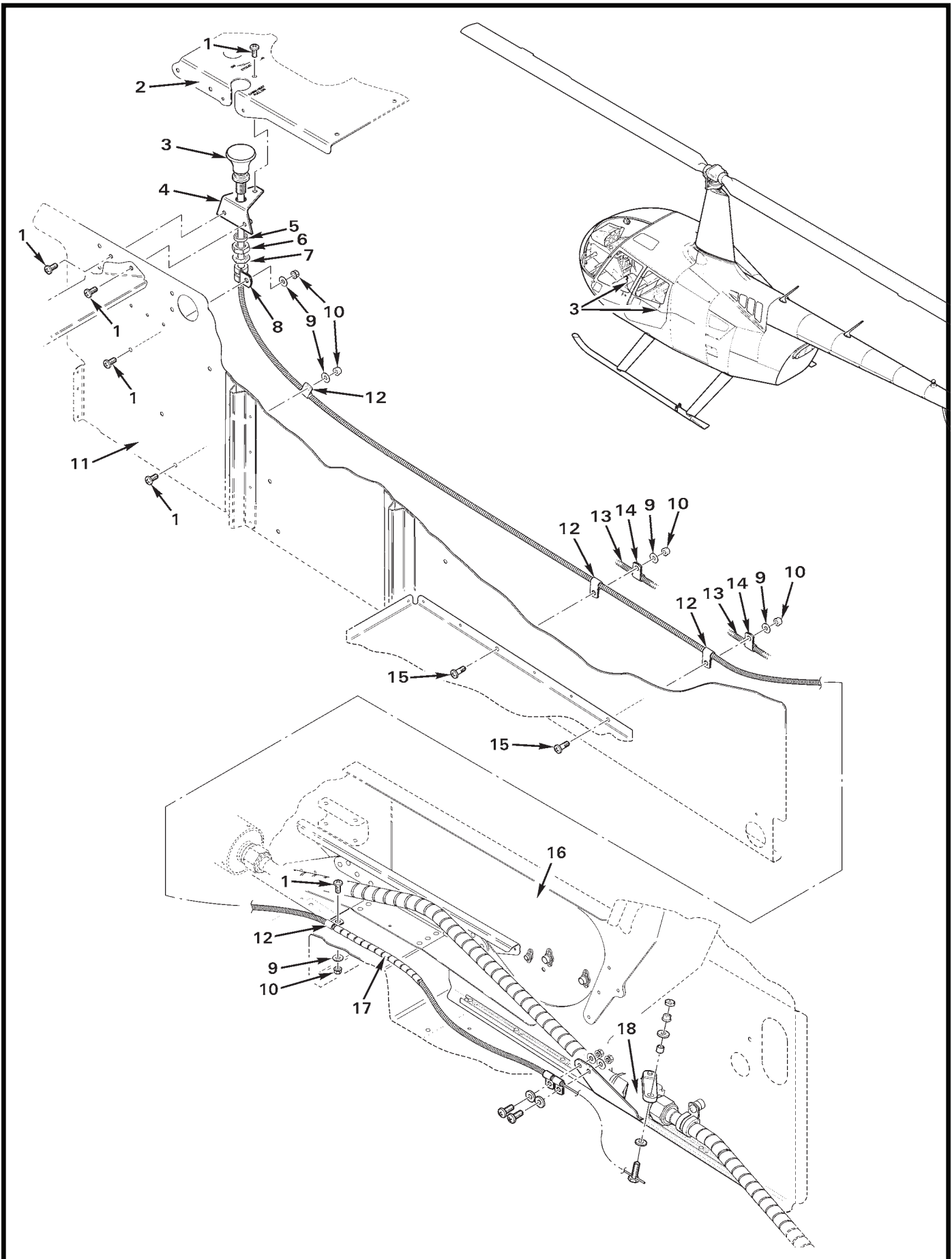


FIGURE AND INDEX NUMBER	PART NUMBER	DESCRIPTION	PARTS AVAIL	QTY PER ASSY
<b>CABIN HEATER – CONTROL INSTALLATION</b>				
21-31-1	MS27039C0806	Screw . . . . .	X	6
2	F444-1	Cover – Cyclic (Ref)		
3	A522-14	Control – Heater (Incl item 6) . . . . .	X	1
4	C518-1	Cover Assembly . . . . .	X	1
5	A130-18	Spacer . . . . .	X	1
6	—	Nut . . . . .	O	1
7	B330-19	Palnut . . . . .	X	1
8	MS21919WDG4	Clamp . . . . .	X	1
9	NAS1149FN816P	Washer . . . . .	X	5
10	MS21042L08	Nut . . . . .	X	5
11	F293-1	Panel – Keel (forward, LH; Ref)		
12	AN742-3	Clamp . . . . .	X	4
13	A522-11	Control (Ref; fuel cutoff)		
14	AN742-3	Clamp (Ref; used with item 13)		
15	MS27039C0808	Screw . . . . .	X	2
16	F292-2	Panel – Keel (aft, RH; Ref)		
17	B161-4	Spirap . . . . .	X	A/R
18	G019-1	Valve Assembly (Ref; see Figure 21-35)		

NOTES

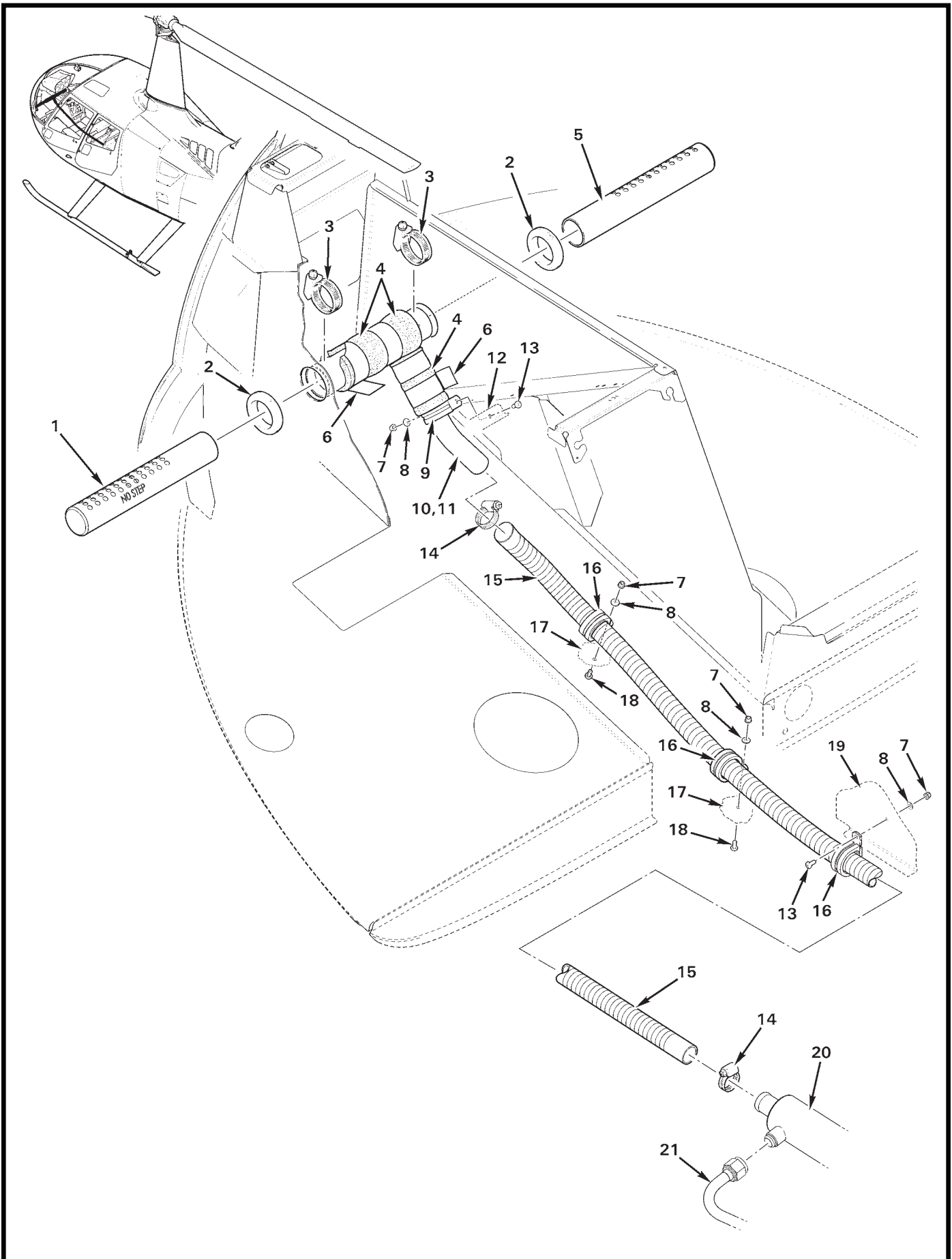


FIGURE AND INDEX NUMBER	PART NUMBER	DESCRIPTION	PARTS AVAIL	QTY PER ASSY
<b>CABIN HEATER – FORWARD COMPONENTS INSTALLATION</b>				
21-33-1	G400-7	Diffuser Assembly (LH) . . . . .	X	1
2	B401-3	Grommet . . . . .	X	2
3	B277-024	Clamp . . . . .	X	2
4	G401-15	Insulation . . . . .	X	A/R
5	G400-8	Diffuser Assembly (RH) . . . . .	X	1
6	A701-1	Tape (aluminum foil) . . . . .	X	A/R
7	MS21042L08	Nut . . . . .	X	4
8	NAS1149FN816P	Washer . . . . .	X	4
9	MS21919WCH16	Clamp . . . . .	X	1
10	G400-3	Can Weldment . . . . .	X	1
11	G400-1	Tee Assembly (Incl items 4, 6, and 10) . . . . .	X	1
12	F365-9	Angle (Ref)		
13	MS27039C0806	Screw . . . . .	X	2
14	B277-12	Clamp . . . . .	X	2
15	A785-39	Hose . . . . .	X	1
16	MS21919WCH18	Clamp . . . . .	X	3
17	F272-1	Chin (Ref)		
18	AN526C832R6	Screw . . . . .	X	2
19	F293-2	Panel – Keel (forward, RH; Ref)		
20	G400-2*	Muffler Assembly (Ref)		
21	G391-4*	Line Assembly (Ref)		

NOTES \* See Figure 21-25.



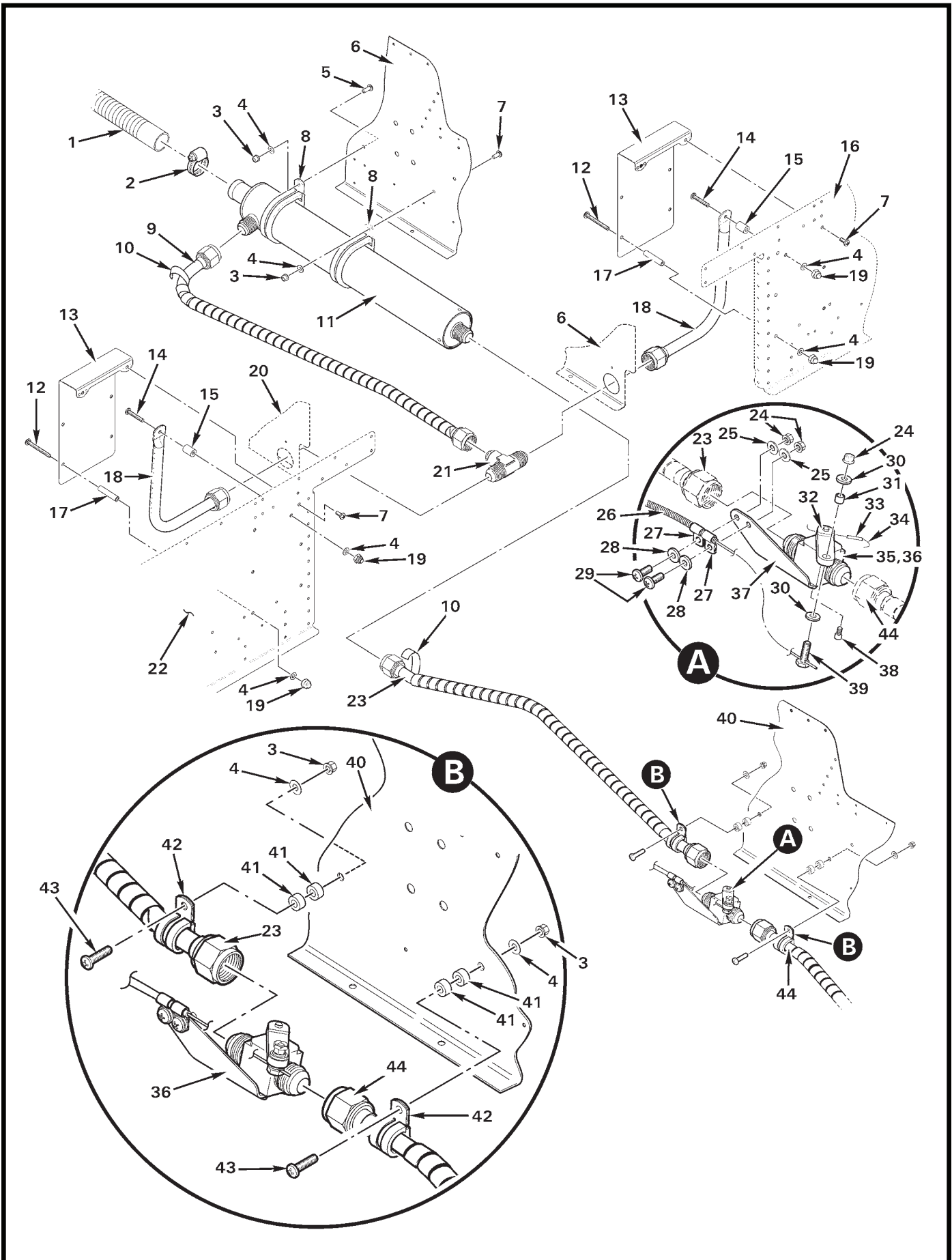


FIGURE AND INDEX NUMBER	PART NUMBER	DESCRIPTION	PARTS AVAIL	QTY PER ASSY
		<b>CABIN HEATER – MUFFLER &amp; CONTROL VALVE INSTALLATION</b>		
21-35-1	A785-39	Hose (Ref, see Figure 21-33)		
2	B277-12	Clamp . . . . .	X	1
3	MS21042L08	Nut . . . . .	X	4
4	NAS1149FN816P	Washer . . . . .	X	14
5	MS27039C0807	Screw . . . . .	X	1
6	F293-2	Panel – Keel (forward, RH; Ref)		
7	MS27039C0806	Screw . . . . .	X	3
8	MS21919WCH18	Clamp . . . . .	X	2
9	G391-4	Line Assembly . . . . .	X	1
10	B161-108	Spirap (high temperature; Orange PTFE [Teflon]) . . . . .	X	A/R
11	G400-2	Muffler Assembly . . . . .	X	1
12	MS27039C0824	Screw . . . . .	X	8
13	G394-1	Guard . . . . .	X	2
14	MS27039C0816	Screw . . . . .	X	2
15	A130-38	Spacer . . . . .	X	2
16	F296-2	Bulkhead – RH (Ref)		
17	C130-19	Spacer . . . . .	X	8
18	G392-3	Diffuser Assembly . . . . .	X	2
19	B340-4	Nut . . . . .	X	10
20	F293-1	Panel – LH (Ref)		
21	AN824-8D	Tee . . . . .	X	1
22	F296-1	Bulkhead – LH (Ref)		
23	G391-2	Line Assembly . . . . .	X	1
24	MS21042L3	Nut . . . . .	X	3
25	NAS1149F0332P	Washer . . . . .	X	2
26	A522-14	Control – Heater (Ref, see Figure 21-31)		
27	AN742-3	Clamp . . . . .	X	2
28	NAS1149F0363P	Washer . . . . .	X	2
29	MS27039C1-08	Screw . . . . .	X	2
30	NAS1149E0363R	Washer . . . . .	X	2
31	A130-48	Spacer . . . . .	X	1
32	F621-1	Arm . . . . .	X	1
33	MS16562-15	Spring Pin . . . . .	X	1
34	MS20995C32	0.032 in. dia Safety Wire . . . . .	X	A/R

NOTES

Continues

FIGURE AND INDEX NUMBER	PART NUMBER	DESCRIPTION	PARTS AVAIL	QTY PER ASSY
<b>CABIN HEATER – MUFFLER &amp; CONTROL VALVE INSTALLATION (Cont'd)</b>				
21-35-35	G019-1	Valve Assembly – Cabin Heat (incl items 24, 25, 27 thru 34, and 36 thru 39) . . . . .	X	1
36	F620-1	Valve . . . . .	X	1
37	F621-2	Bracket . . . . .	X	1
38	NAS1352-04-4P	Screw . . . . .	X	4
39	A462-4	Fitting . . . . .	X	1
40	F292-2	Panel – Keel (aft, RH; Ref)		
41	A130-21	Spacer . . . . .	X	4
42	MS21919WCH8	Clamp . . . . .	X	2
43	MS27039C0812	Screw . . . . .	X	2
44	G391-5	Line Assembly (Ref, see Figure 21-39)		
NOTES				

Intentionally Blank

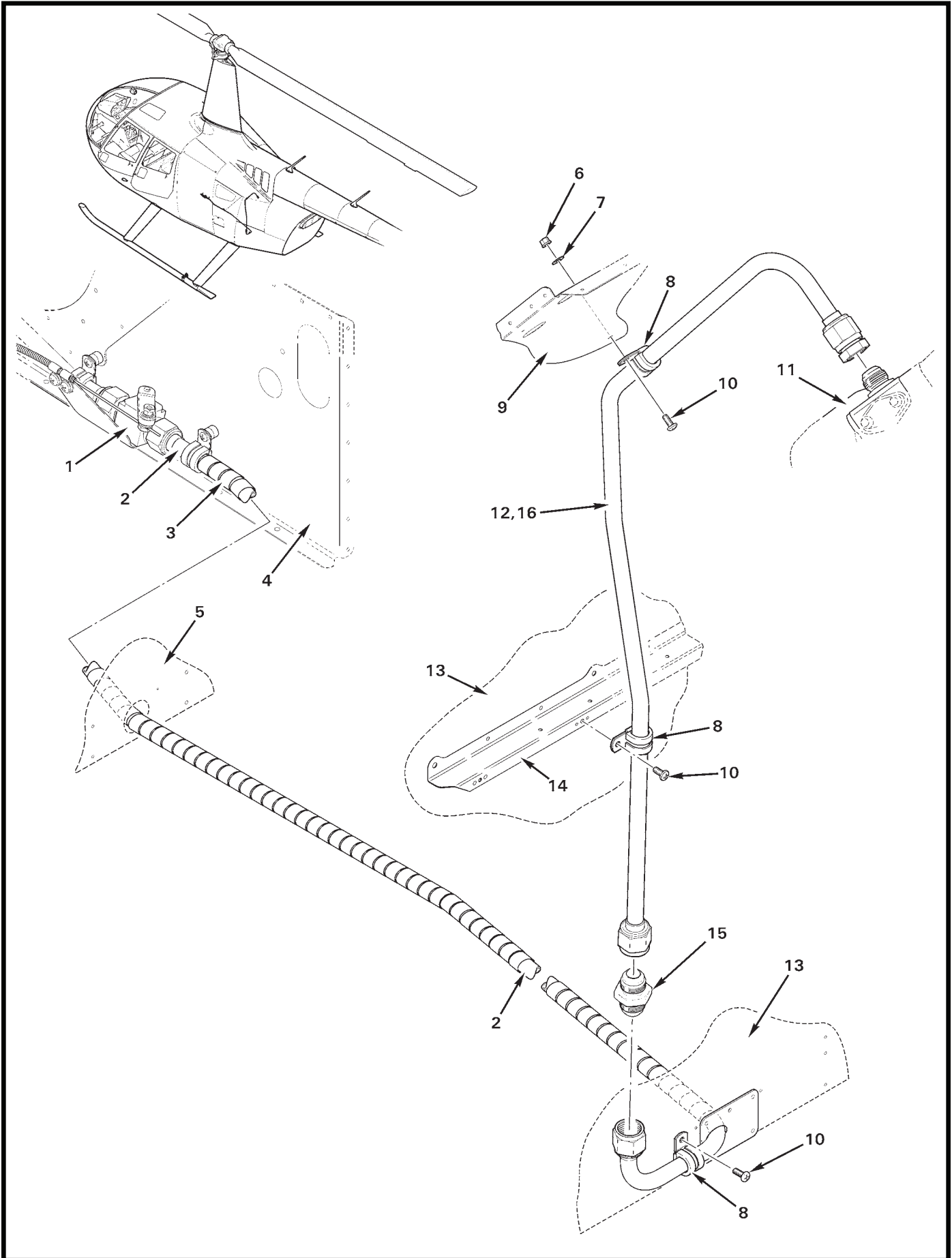


FIGURE AND INDEX NUMBER	PART NUMBER	DESCRIPTION	PARTS AVAIL	QTY PER ASSY
<b>CABIN HEATER – AFT COMPONENTS INSTALLATION</b>				
21-39-1	G019-1	Valve Assembly (Ref, see Figure 21-35)		
2	G391-5	Line Assembly . . . . .	X	1
3	B161-108	Spirap (high temperature; Orange PTFE [Teflon]) . . . . .	X	A/R
4	F292-2	Panel – Keel (aft, RH; Ref)		
5	G259-1	Panel (Bulkhead; Ref)		
6	MS21042L08	Nut . . . . .	X	1
7	NAS1149FN816P	Washer . . . . .	X	1
8	MS21919WCH8	Clamp . . . . .	X	3
9	F234-1	Firewall (Ref)		
10	MS27039C0806	Screw . . . . .	X	3
11	F145-1	Engine (Ref)		
12	G391-1 *	Line Assembly . . . . .	X	1
13	F233-1	Firewall (Ref)		
14	F384-2	Stiffener (Ref)		
15	G396-1	Union . . . . .	X	1
16	A257-9	Anti-Seize . . . . .	X	A/R

NOTES \* Apply item 16 to upper nut threads only.

Intentionally Blank