

R22 B439-1 Push/Pull Tube Guide Installation Kit Instructions

Supersedes KI-28, issued for compliance with R22 Service Bulletin #36. Kit replaces obsolete A432-1 guide assembly and A439-1 guide support.

NOTE

Visit www.robinsonheli.com to verify kit instructions are current revision. Review instructions before installation; contact RHC Technical Support with questions. Verify kit contents match list; contact RHC Customer Service if parts are missing or damaged.

ITEM	PART NUMBER	KIT CONTENTS	QTY
1	KI-130Instr.	Kit Instructions	1
2	B439-1	P/P Tube Guide Assembly	1
3	MS20470AD3-3+	Rivet (Note: "+" in part number indicates 50-qty pack)	1
4	MS20470AD4-3.5+	Rivet (Note: "+" in part number indicates 20-qty pack)	1

Consumables

Refer to R22 Maintenance Manual (MM) § 23-79 for approved materials list.

- B270-8 Sealant

Kit Instructions

NOTE

Unless otherwise specified, torque all fasteners per MM § 23-30.

1. Remove fuel tanks per MM § 12.110.
2. Remove A121-7 push/pull tubes per MM § 8.161.
3. Cover flight control tunnel at horizontal firewall to prevent debris from falling into controls and wiring.
4. Refer to Figure 1. Remove and retain A752-2 angle (headset hanger) and attaching hardware from V-bulkhead. Exercise care when displacing foam insulation.
5. Remove and discard existing A432-1 & A439-1 guides. Exercise care when drilling out rivets to avoid damaging foam insulation.
6. Refer to Figures 1 and 2. Position B439-1 push/pull tube guide assembly as shown. Note the 5° tilt of guide is inherent of design; do not adjust forward flange. Install guide assembly using noted rivets.
7. Install A752-2 angle using existing hardware.

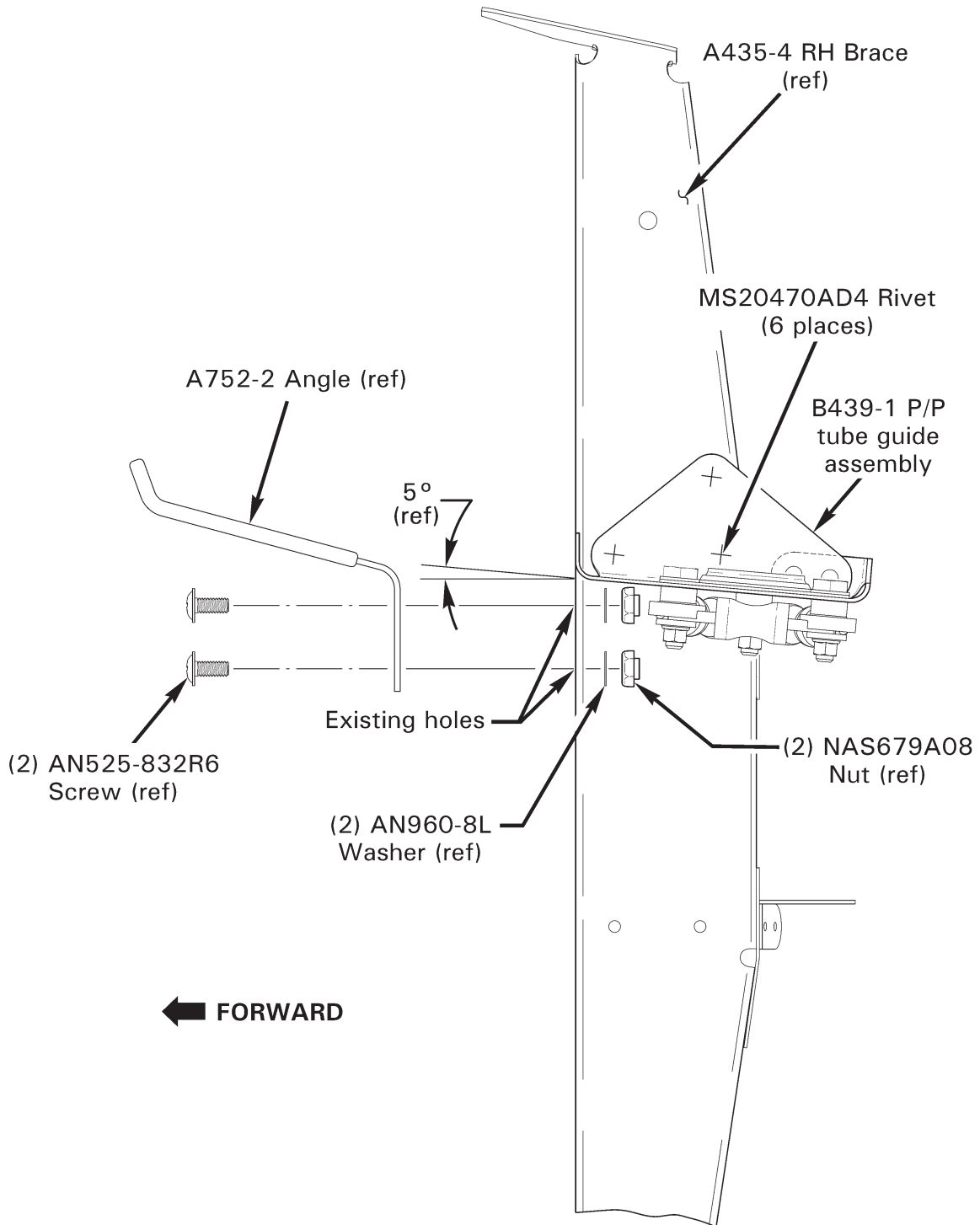


FIGURE 1 Installation of B439 P/P tube guide assembly
(view looking inboard; jackshaft and LH brace omitted for clarity)

Kit Instructions (continued)

8. Ensure tunnel area is free of foreign material. Install A121-7 push/pull tubes per MM § 8.165, omitting steps a, b, e, and f.
9. Reinstall foam insulation displaced in step 4 using B270-8 adhesive.
10. Install fuel tanks per MM § 12.110.
11. Make appropriate maintenance record entries. No change to Weight and Balance Record is required.

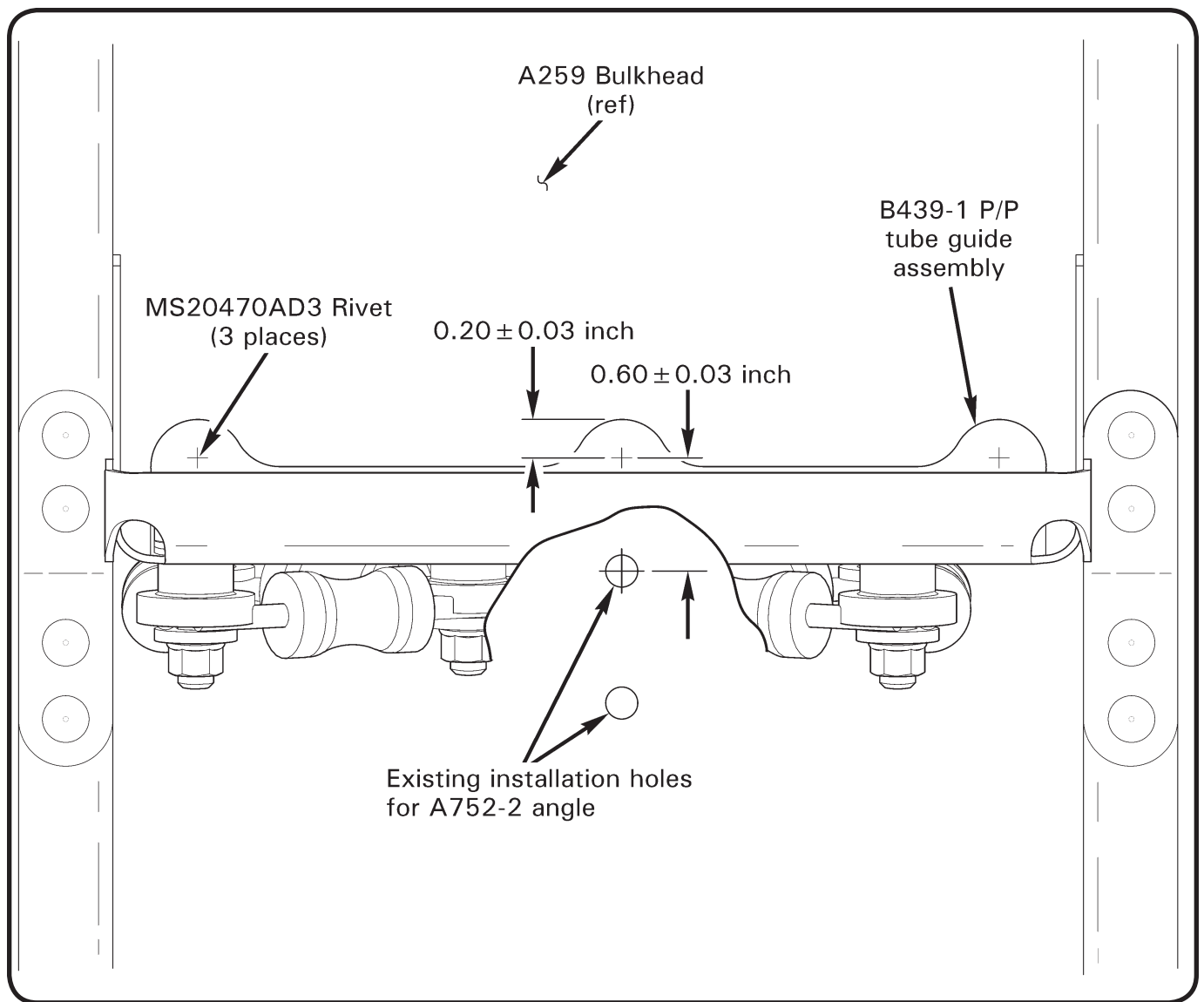


FIGURE 2 Installation of rivets in V-bulkhead
(view looking forward; jackshaft omitted for clarity)