

CHAPTER 62

MAIN ROTOR

<i>Figure</i>	<i>Title</i>	<i>Page</i>
62-1	Main Rotor Blade Assembly	62.0
62-3	Main Rotor Blade Assembly	62.2
62-5	Main Rotor Hub Installation	62.4
62-7	Main Rotor Hub Installation	62.6

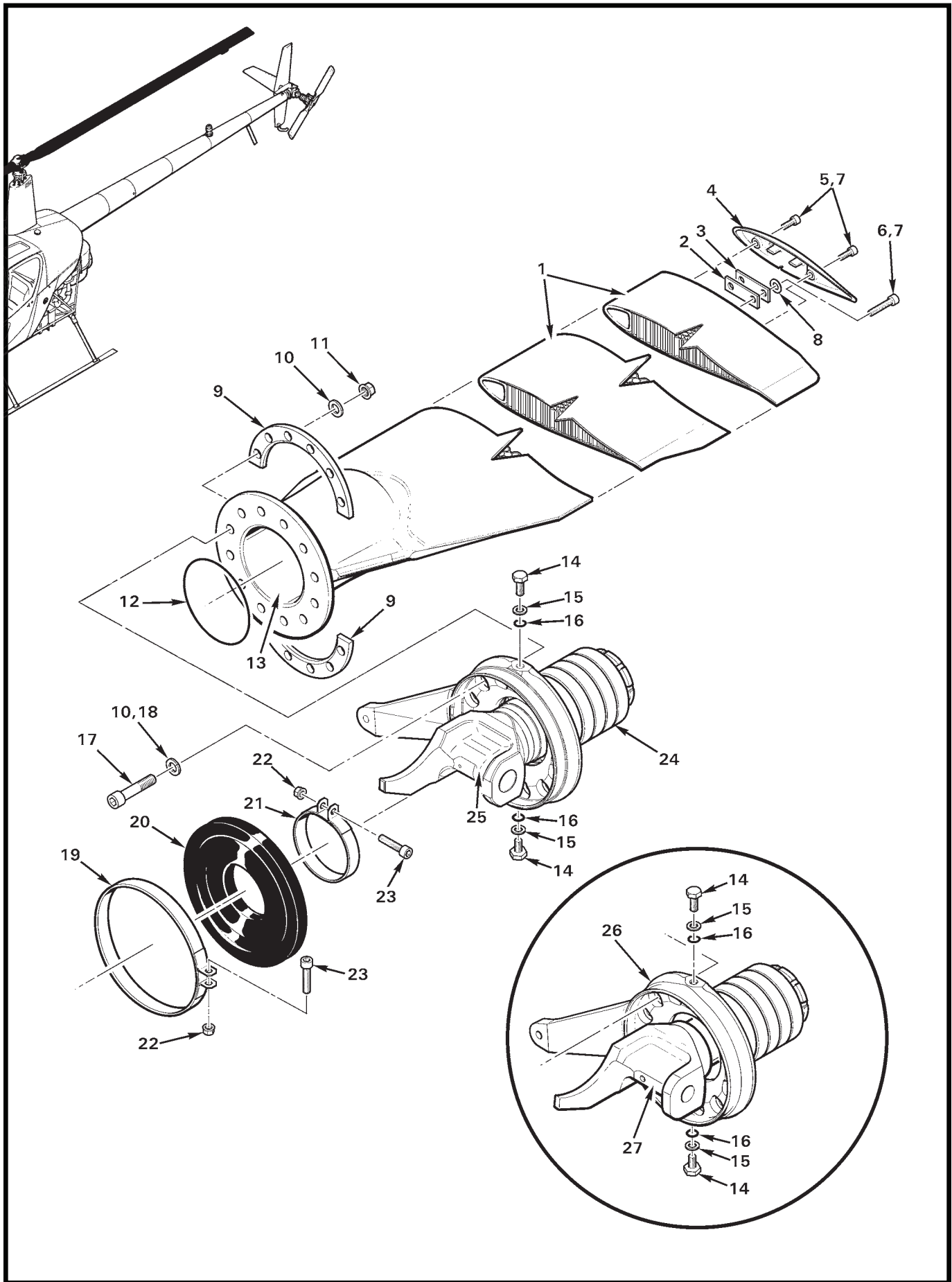


FIGURE AND INDEX NUMBER	PART NUMBER	DESCRIPTION	PARTS AVAIL	QTY PER ASSY
		MAIN ROTOR BLADE ASSEMBLY*		
62-1-1	A005-14	Main Rotor Blade and Spindle Assembly (Incl items 1 [A016-6], 9 thru 11, 13, 14, 17 [A722-5], 18 and 24)	X	2
	A005-7	Main Rotor Blade and Spindle Assembly (Incl items 1 [A016-6], 9 thru 11, 13, 14, 17 [A722-2], 18 and 26)	X	2
	A005-7R	Main Rotor Blade and Spindle Assembly (overhaul exchange; R8373 core deposit required)	X	1
	A016-6**	Blade Assembly	O	1
2	A298-2	Balance Strip (15 grams, 0.125-inch thick steel)	X	A/R
3	A298-3	Balance Strip (5 grams, 0.032-inch thick steel)	X	A/R
4	A300-3	Tip Cover (round)	X	1
5	NAS1351N3-10P	Screw (install using item 7)	X	2
6	A722-4	Screw (install using item 7)	X	2
7	A257-9	Anti-Seize – Loctite Silver Grade	X	A/R
8	NAS1149F0332P	Washer (or NAS1149F0363P as required for balance)	X	A/R
9	A253-2	Spacer	O	2
10	NAS1149F0563P	Washer (install using item 18, both sides)	X	24
11	D210-5	Nut	X	12
12	A215-129	O-Ring	O	1
13	A257-4	Oil (to fill blade housing)	X	A/R
14	B289-2	Bolt (Incl items 15 and 16)	X	2
15	—	Washer	O	1
16	A215-902	O-Ring	X	1
17	A722-5	Screw (A005-7 MR blade and spindle assembly revision AM thru AQ, and A005-14 MR blade and spindle assembly revision AR and subsequent)	O	12
	A722-2	Screw (A005-7 MR blade and spindle assembly revision AL)	O	12
18	B270-1	Sealant (2-oz tube)	X	A/R
19	A165-7	Clamp Assembly (Incl items 22 and 23)	X	1
20	A156-3	Boot (gray, cold weather)	X	1
	A156-4	Boot (black, standard)	X	1
21	A165-1	Clamp Assembly (Incl items 22 and 23)	X	1
22	MS21042L08	Nut	X	2
23	NAS1352-08-12P	Screw	X	2
24	A005-15	Spindle Assembly (includes items 12, 19 thru 21, and 25)	O	1
25	A158-3	Spindle	O	1
26	A005-8	Spindle Assembly (includes items 12, 19 thru 21, and 27)	O	1
27	A158-1	Spindle	O	1

NOTES * Aluminum skin blade; see Figure 99-41 for shipping crate.
 ** Critical part; see R22 Maintenance Manual.

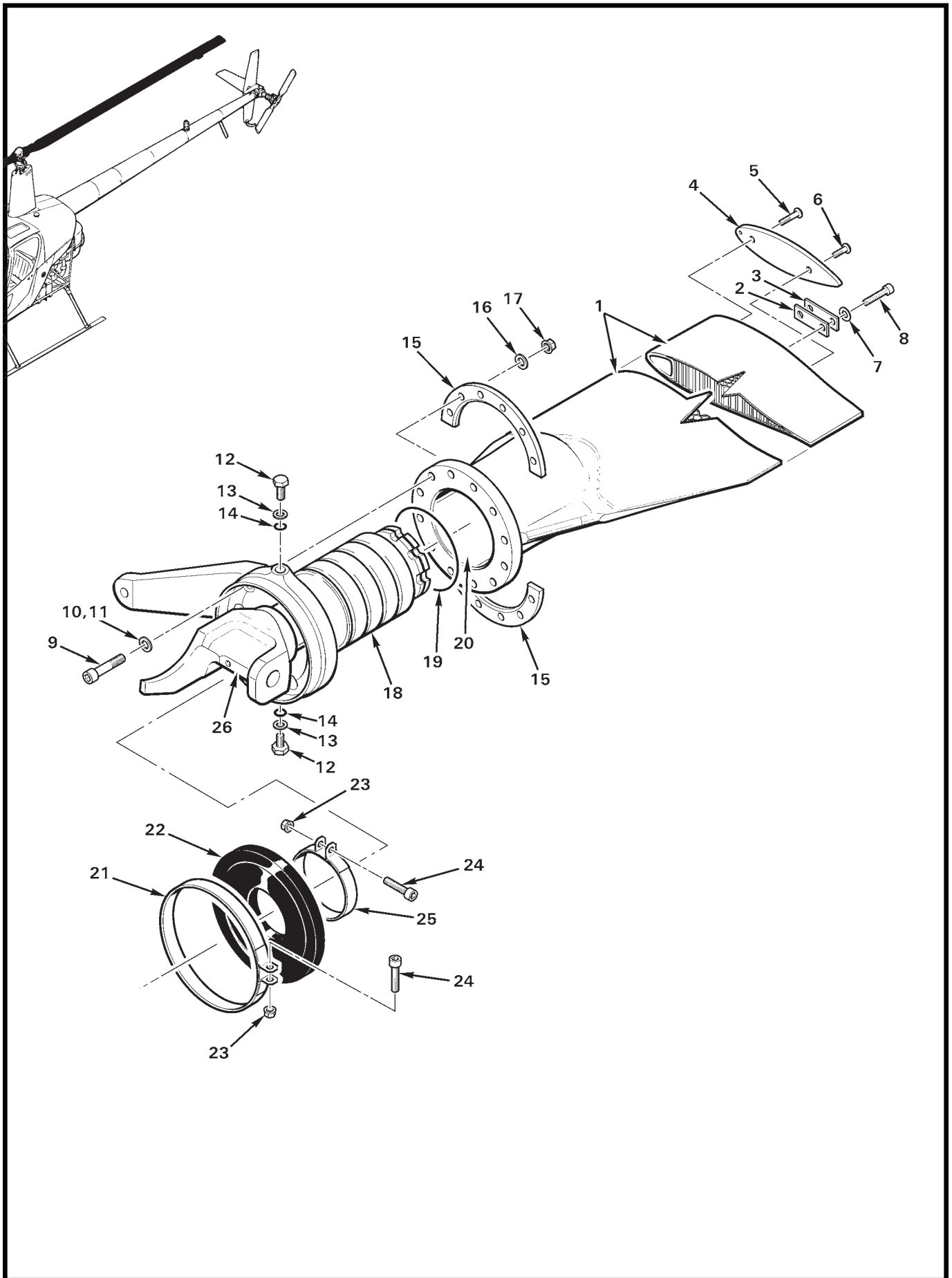


FIGURE AND INDEX NUMBER	PART NUMBER	DESCRIPTION	PARTS AVAIL	QTY PER ASSY
		MAIN ROTOR BLADE ASSEMBLY*		
62-3-1	A005-6	Main Rotor Blade and Spindle Assembly (Ref, no longer available. see Figure 62-1.)	O	2
	A016-4**	Blade Assembly (Ref; no longer available)	O	1
2	A298-2	Balance Strip (15 grams, 0.125-inch thick steel)	X	A/R
3	A298-3	Balance Strip (5 grams, 0.032-inch thick steel)	X	A/R
4	A300-2	Tip Cover (flat)	X	1
5	MS24694-C54	Screw	X	1
6	MS24694-C51	Screw	X	1
7	NAS1149F0332P	Washer (or NAS1149F0363P as required for balance)	X	A/R
8	A722-4	Screw	X	2
9	A722-2	Screw (A005-2 main rotor blade and spindle assembly revision AF thru AH, and A005-6 main rotor blade and spindle assembly revision AI thru AK)	O	12
	A722-1	Screw (A005-2 main rotor blade and spindle assembly revision S thru AE)	O	12
	NAS1351-4-20	Screw (A005-2 main rotor blade and spindle assembly revision N and prior)	O	12
10	A722-3	Washer (Ref; chamfered)	O	12
11	B270-1	Sealant (2-oz tube)	X	A/R
12	B289-2	Bolt (includes item 13 and 14)	X	2
13	—	Washer	O	1
14	A215-902	O-Ring	X	1
15	A253-1	Spacer	O	2
16	A141-11	Washer	X	12
17	D210-4	Nut	X	12
18	A005-3	Spindle Assembly (Incl items 21, 22, 25, and 26)	O	1
19	A215-039	O-Ring	O	1
20	A257-4	Oil (to fill blade housing)	X	A/R
21	A165-2	Clamp Assembly (Incl items 23 and 24)	X	1
22	A156-1	Boot (black, standard)	X	1
	A156-2	Boot (gray, cold weather)	X	1
23	MS21042L08	Nut	X	2
24	NAS1352-08-12P	Screw	X	2
25	A165-1	Clamp Assembly (Incl items 23 and 24)	X	1
26	A158-1	Spindle (Ref)	O	1
27	A016-2**	Main Rotor Blade (Ref; retired by AD 2004-19-09. Not shown.)		

NOTES * Stainless steel skin blade; see Figure 99-41 for shipping crate.
 ** Critical part; see R22 Maintenance Manual.

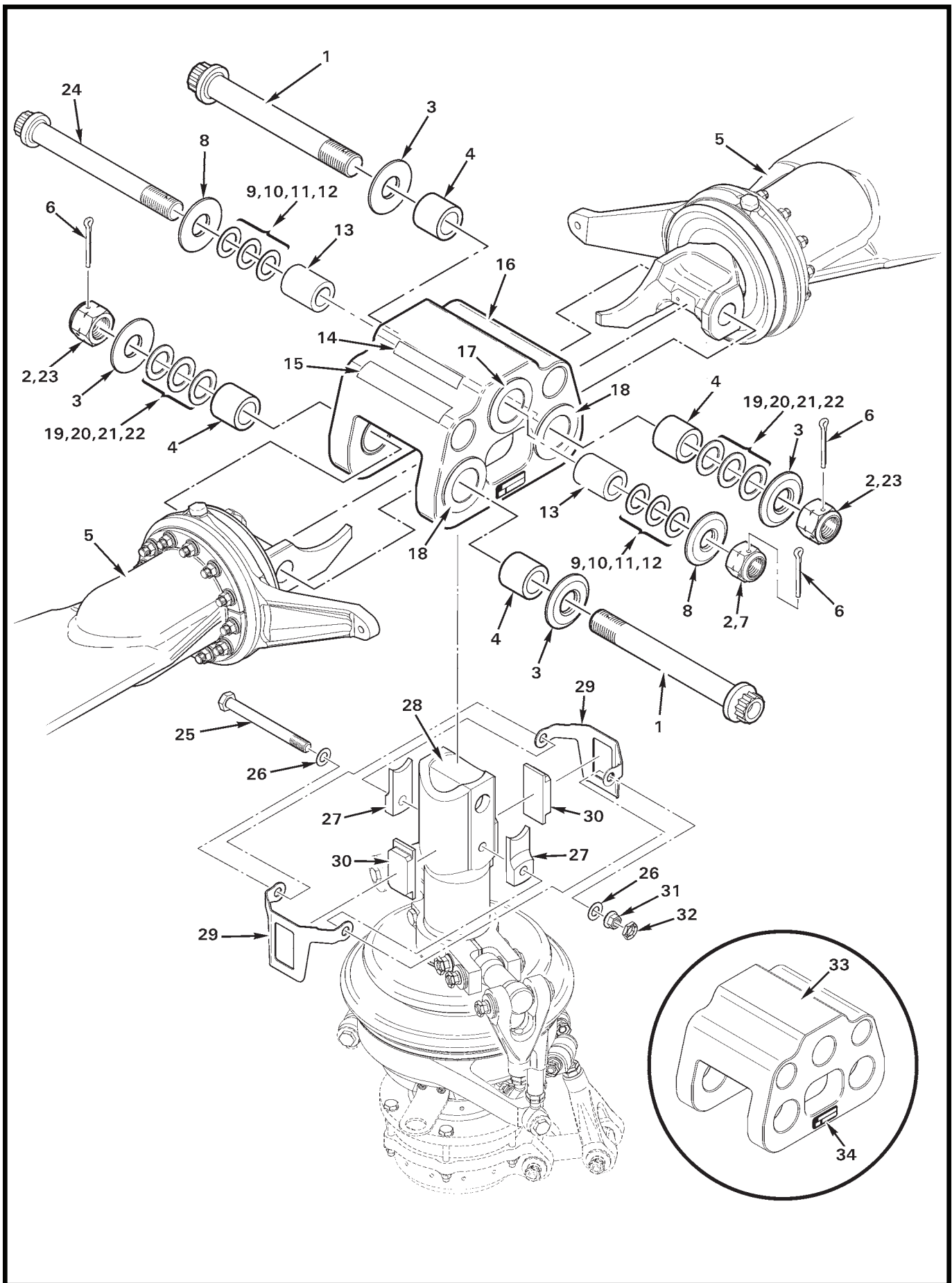


FIGURE AND INDEX NUMBER	PART NUMBER	DESCRIPTION	PARTS AVAIL	QTY PER ASSY
MAIN ROTOR HUB INSTALLATION				
62-5-1	NAS632-82	Bolt (or MS21250-12082)	X	2
2	A257-9	Anti-Seize – Loctite Silver Grade	X	A/R
3	A152-2	Thrust Washer	X	4
4	A106-7	Journal – Bearing (length = 1.005-inch, bore = 0.750-inch) . .	X	4
5	A005-14	Main Rotor Blade and Spindle Assembly (Ref, see Figure 62-1)		
6	MS24665-355	Cotter Pin	X	3
7	A189-10	Nut – Double Lock	X	1
8	A152-1	Thrust Washer	X	2
9	A117-5	Shim – Washer (thickness = 0.012-inch, bore = 0.625-inch)	X	A/R
10	A117-6	Shim – Washer (thickness = 0.015-inch, bore = 0.625-inch)	X	A/R
11	A117-7	Shim – Washer (thickness = 0.020-inch, bore = 0.625-inch)	X	A/R
12	A117-8	Shim – Washer (thickness = 0.025-inch, bore = 0.625-inch)	X	A/R
13	A106-5	Journal – Bearing (length = 1.260-inch, bore = 0.625-inch) . .	X	A/R
14	A654-18	Decal – "LEVEL HERE"	X	1
15	G682-26	Decal (coning bolt instructions)	X	1
16	A005-12	Hub Assembly (Incl items 14, 15, 17, 18, and 33)	X	1
17	A648-3*	Bearing (teeter hinge)	X	2
18	A648-2*	Bearing (coning hinges)	X	4
19	A117-48	Shim – Washer (thickness = 0.012-inch, bore = 0.755-inch)	X	A/R
20	A117-49	Shim – Washer (thickness = 0.015-inch, bore = 0.755-inch)	X	A/R
21	A117-50	Shim – Washer (thickness = 0.020-inch, bore = 0.755-inch)	X	A/R
22	A117-51	Shim – Washer (thickness = 0.025-inch, bore = 0.755-inch)	X	A/R
23	A189-12	Nut – Double Lock	X	2
24	NAS630-80	Bolt (or MS21250-10080)	X	1
25	NAS6605-46	Bolt (or NAS1305-46)	X	1
26	NAS1149F0516P	Washer	X	2
27	A150-1	Droop Stop	X	2
28	A251-1	Main Rotor Shaft (Ref)		
29	B226-2	Bracket – Teeter Stop	X	2
30	B151-3	Teeter Stop	X	2
31	D210-5	Nut	X	1
32	B330-16	Palnut	X	1
33	B370-1	Hub (Ref; includes item 34)	O	1
34	A651-1	Data Plate	O	1

NOTES * Requires MT329 installation tools. See Figure 99-37.

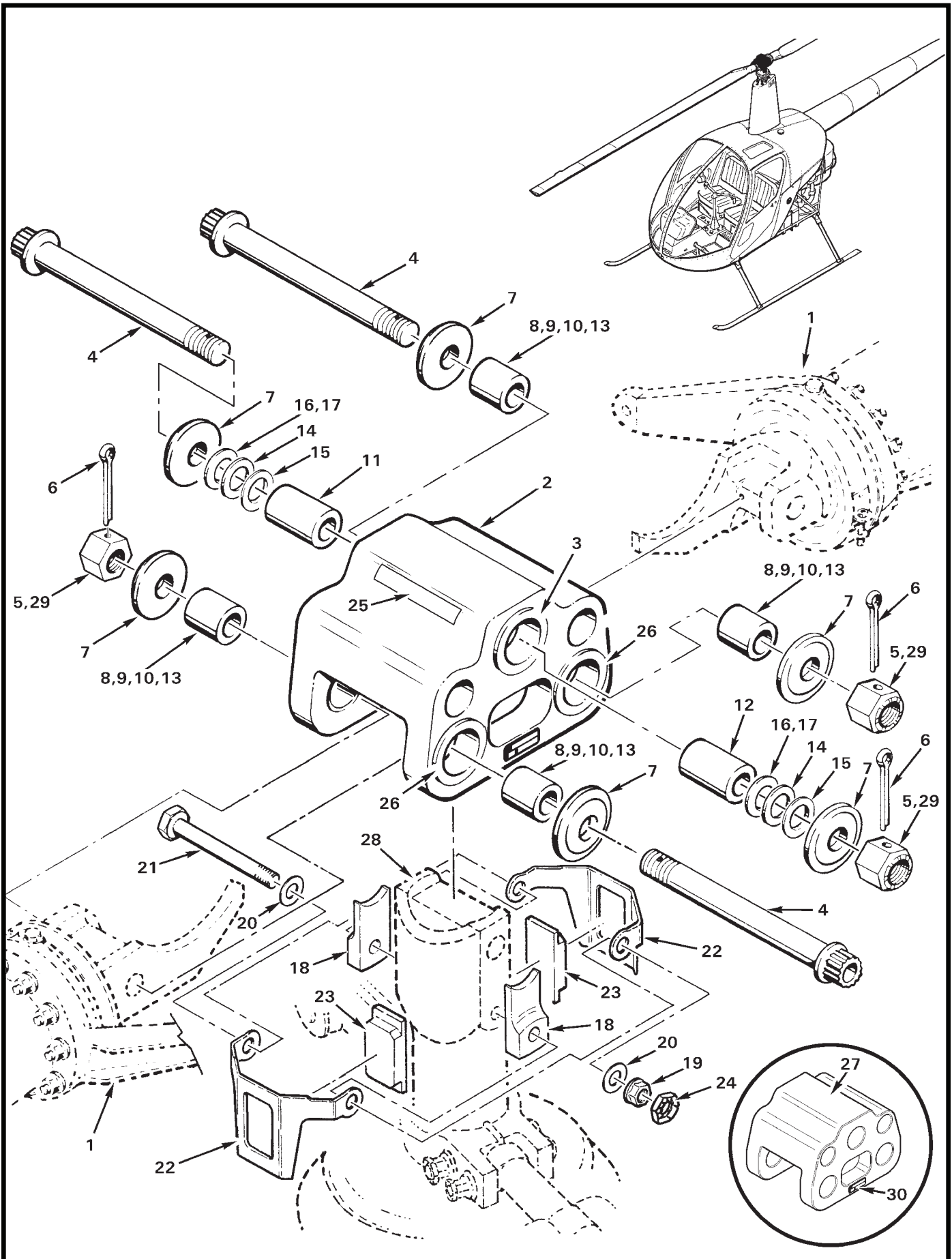


FIGURE AND INDEX NUMBER	PART NUMBER	DESCRIPTION	PARTS AVAIL	QTY PER ASSY
MAIN ROTOR HUB INSTALLATION				
62-7-1	A005-6	Main Rotor Blade and Spindle Assembly (Ref, see Figure 62-1)		
2	A005-4	Hub and Bearings (Incl items 3, 25 thru 27)	X	1
3	A648-3*	Bearing (teeter hinge)	X	2
4	NAS630-80	Bolt (or MS21250-10-80)	X	3
5	A189-10	Nut – Double Lock	X	3
6	MS24665-355	Cotter Pin	X	3
7	A152-1	Thrust Washer	X	6
8	A106-1	Journal – Bearing (length = 1.000-inch)	X	A/R
9	A106-2	Journal – Bearing (length = 0.995-inch)	X	A/R
10	A106-3	Journal – Bearing (length = 0.990-inch)	X	A/R
11	A106-4	Journal – Bearing (length = 1.300-inch)	X	A/R
12	A106-5	Journal – Bearing (length = 1.260-inch)	X	A/R
13	A106-6	Journal – Bearing (length = 1.005-inch)	X	A/R
14	A117-5	Shim – Washer (thickness = 0.012-inch)	X	A/R
15	A117-6	Shim – Washer (thickness = 0.015-inch)	X	A/R
16	A117-7	Shim – Washer (thickness = 0.020-inch)	X	A/R
17	A117-8	Shim – Washer (thickness = 0.025-inch)	X	A/R
18	A150-1	Droop Stop	X	2
19	MS21042L5	Nut	X	1
20	NAS1149F0516P	Washer	X	2
21	NAS6605-46	Bolt (or NAS1305-46)	X	1
22	B226-2**	Bracket – Teeter Stop	X	2
23	B151-3**	Teeter Stop	X	2
24	B330-16	Palnut	X	1
25	A654-18	Decal – "LEVEL HERE"	X	1
26	A648-1*	Bearing (coning hinges)	X	4
27	A154-1	Hub (Ref; includes item 30)	O	1
28	A251	Main Rotor Shaft (Ref)		
29	A257-9	Anti-Seize – Loctite Silver Grade	X	A/R
30	A651-1	Data Plate	O	1

NOTES * Requires MT329 installation tools. See Figure 99-37.
 ** May be used only if A158-1 revision "N" (or subsequent revision) spindles are installed.

Intentionally Blank