

**KI-242 R22 Clutch Actuator Time Delay Installation Kit Instructions**  
*To comply with R22 Service Bulletin SB-113A*

**NOTE**

Visit [www.robinsonheli.com](http://www.robinsonheli.com) to verify kit instructions are current revision. Review instructions before installation; contact RHC Technical Support with questions. Verify kit contents match list; contact RHC Customer Service if parts are missing or damaged.

ITEM	PART NUMBER	KIT CONTENTS	QTY
1	KI-242 Instr.	Kit Instructions . . . . .	1
2	B843-2	Wire Assembly . . . . .	1
3	D602-3	Time Delay . . . . .	1
4	MS3367-5-9+	Ty-rap (“+” in part number indicates 20-qty pack) . . . . .	1
5	MS3367-7-9+	Ty-rap (“+” in part number indicates 10-qty pack) . . . . .	1

**Kit Instructions**

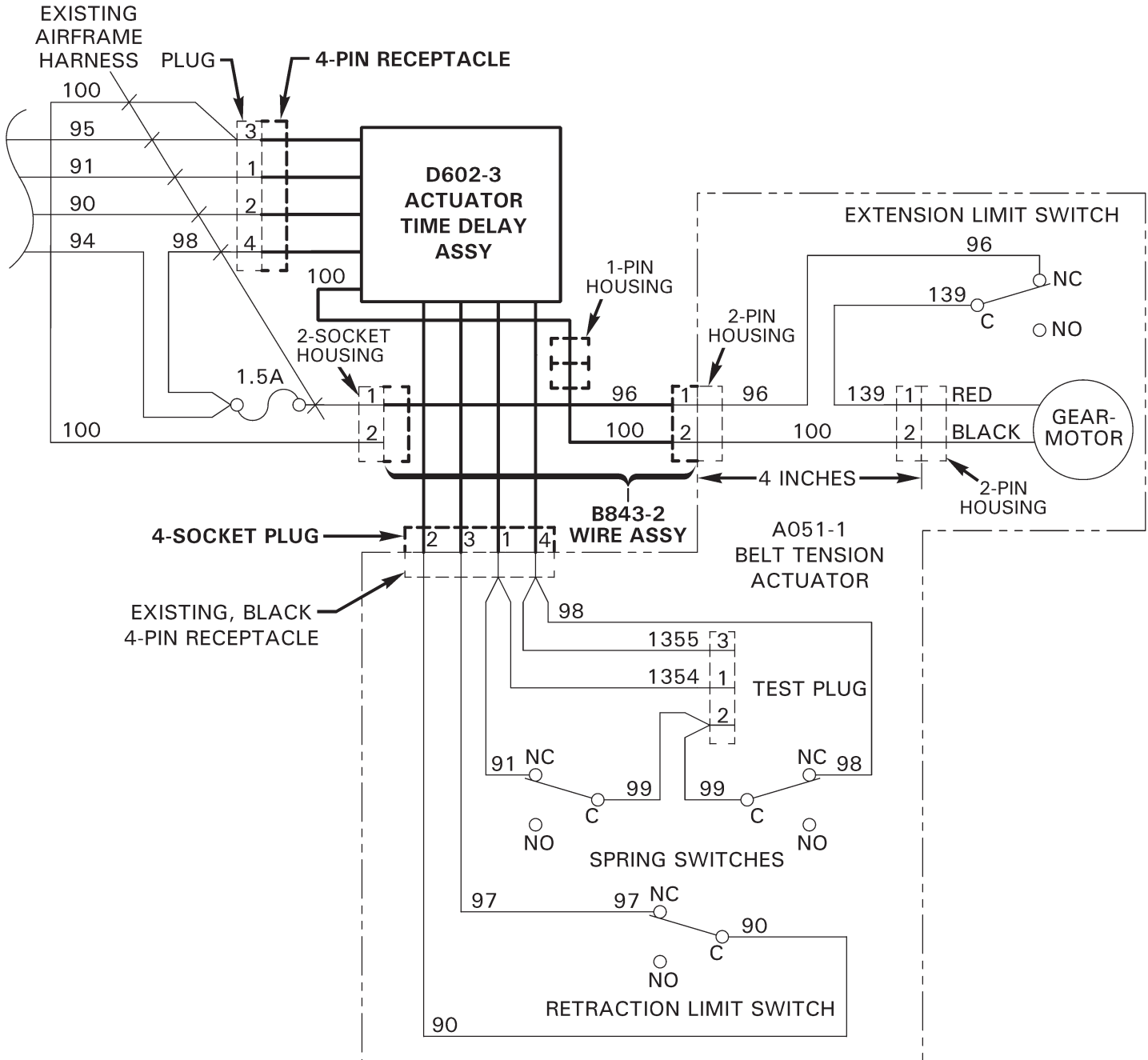
1. If R22 is helicopter S/N 0002 thru 0463, verify Service Bulletin #45 has been complied with.
2. Verify battery switch is off. Pull out CLUTCH or CLUTCH START circuit breaker (5- or 7½ -amp) at panel.
3. Refer to R22 Illustrated Parts Catalog Figure 63-19 item 18. Open cowl door(s) and locate actuator wiring’s black 4-pin receptacle along right side of A020 upper frame. Cut ty-raps as required and unplug receptacle from airframe harness plug.
4. Refer to Figure 1 schematic. Connect (supplied) D602-3 time delay’s 4-socket plug to actuator wiring’s black 4-pin receptacle; connect time delay’s 4-pin receptacle to airframe harness plug; connect time delay’s 1-pin housing to 1-socket housing on (supplied) B843-2 wire assembly.
5. Route B843-2 wire assembly along upper frame’s cross tube to left side of helicopter.
6. Follow wiring from actuator gearmotor to a 2-pin housing, then to a second 2-pin housing (4 inches forward) attached to airframe harness; disconnect second 2-pin housing from airframe harness, removing ty-raps as required. Connect B843-2 wire assembly’s 2-socket housing to gearmotor wiring’s 2-pin housing; connect B843-2 wire assembly’s 2-pin housing to airframe harness’s 2-socket housing.
7. Secure D602-3 time delay to upper frame using (5) MS3367-7-9 ty-raps. Cinch ty-raps until snug without over-tightening, and trim tips flush with heads. Verify security and operating clearance to adjacent tail rotor A121-15 push-pull tube.
8. Secure remaining wiring to upper frame using MS3367-5-9 ty-raps as required. Cinch ty-raps until snug without over-tightening, and trim tips flush with heads. Verify security and operating clearance.
9. Push in CLUTCH or CLUTCH START circuit breaker at panel. Turn battery switch on. Verify clutch engages and disengages normally. Close & secure cowling door(s).

**Kit Instructions (continued)**

10. Revise Weight and Balance Record in R22 Pilot's Operating Handbook (POH) Section 6 to incorporate the following data:

Item	Weight	Longitudinal Arm	Longitudinal Moment	Lateral Arm	Lateral Moment
D602-3 Time Delay installation	0.25 lb	116.0 in.	29 in.-lb	Negligible	Negligible

11. Make appropriate maintenance record entries.



**FIGURE 1**