

By: HA 13 OCT 06
Appvd: Pat Cox 13 OCT 2006Issued: 13 OCT 2006**KI-184-2 28-Volt Com Transceiver Filter Assembly Field Installation Kit
(for KY196A installation, battery must not be under console)**KIT CONTENTS:

1 ea	7622	clamp
1 ft	B158-6	heat shrink
2 ea	B261-2	splice
1 ea	B269-8	receptacle, includes crimp-type sockets
1 ft	B274-20	wire-unshielded, 20 gage
1 ea	D614-2	com transceiver filter assembly 28-volt
1 ea	KI-184-2INSTR.	kit instructions
2 ea	MS21044N06	nut
2 ea	MS35206-212	screw
1 ea	MS35206-235	screw
1 ea	MS35206-328	screw
2 ea	MS35333-36	lockwasher
2 ea	NAS1149FN616P	washer

REQUIRED CONSUMABLES AND SPECIAL TOOLS:

A/R	A701-1	aluminum tape 1-inch wide, 3M 431 or 3M 439
A/R	A701-2	aluminum tape 6-inch wide, 3M 425
A/R	B268-3	lacing tape, Mil-T-43435, Type I, Size 3, Finish B
1 ea	AMP 465195-1	pin extractor, or equivalent
1 ea	AMP 601966-1	D-subminiature crimping tool, or equivalent
1 ea	Ideal Stripmaster	wire insulation stripping tool, or equivalent

INSTRUCTIONS:

1. Disconnect battery.
2. Remove aft belly panel, avionics, cyclic box cover, avionics face, and plastic hole plugs on each keel panel just aft and above pedal bearing blocks. Via holes in keel panels, remove screws securing radio rack to structure and pull out radio rack.
3. Refer to Figure 1. Cut lacing tape and Ty-raps from KY196A wire harness exposed wires and remove harness clamp from tray. Remove KPN-050-02600-0000 connector from tray and retain mounting hardware.
4. Push terminals from KPN-050-02600-0000 connector with AMP 465195-1 pin extractor. Cut terminals from wire harness as close to terminals as possible.

By: HA 13 OCT 06
Appvd: Pat Corp 13 OCT 2006Issued: 13 OCT 2006

5. Refer to Figure 2. On wires cut in preceding step, Attach two 2-inch lengths of B274-20 wire to existing wires -200 (or -703) and -201 (or -704) using B261-2 splices. Cover splices with B158-6 heat shrink. As required, strip wire ends then crimp on sockets provided with B269-8 receptacle using D-subminiature crimping tool. Install sockets with attached wires in noted locations on B269-8 receptacle.
6. Refer to Figure 3. Drill 0.140/0.146 inch diameter mounting hole in back of tray as shown. Deburr hole. Remove all drilling debris.
7. Refer to Figure 4. Apply A701-1 tape to back of tray as shown.
8. Refer to Figure 5. Verify white key polarizer is located between tabs 9 and K in filter's 09-50-6155 connector. Mount 90-50-6155 connector to tray using hardware retained in step 3. Mount D614-2 filter assembly to tray as shown using MS35206 screws. Connect and secure B269-8 receptacle to filter as shown. Secure wiring to combined filter and tray using 7622 clamp as shown.
9. As required, install B268-3 lacing tape on wires between B268-3 receptacle and expansion sleeving.
10. Refer to Figure 6. Apply A701-1 tape radio tray, filter, and COM transceiver as shown. Trim excess tape from opening around locking mechanism on transceiver.
11. Refer to Figures 7, 8, and 9. Apply A701-2 tape to aft belly panel scoop, then, in sequence, to remainder of panel per Figure 9. Trim tape to edge of belly panel and scoop. Tape should not be visible from exterior when properly trimmed.
12. Install and secure radio rack, avionics face, cyclic box cover, hole plugs, avionics, and belly panel.
13. Open upper console. Manipulate pedals thru full range of travel and verify clearance to structure and wiring. Ty-rap® wiring as required.
14. Connect battery. Reset clock.
15. Check avionics for proper operation.
16. Update Equipment List to reflect this installation. Weight and balance change is negligible.
17. Make appropriate maintenance record entry(s).

By: HA 13 OCT 06
Appvd: [Signature] 13 OCT 2006

Issued: 13 OCT 2006

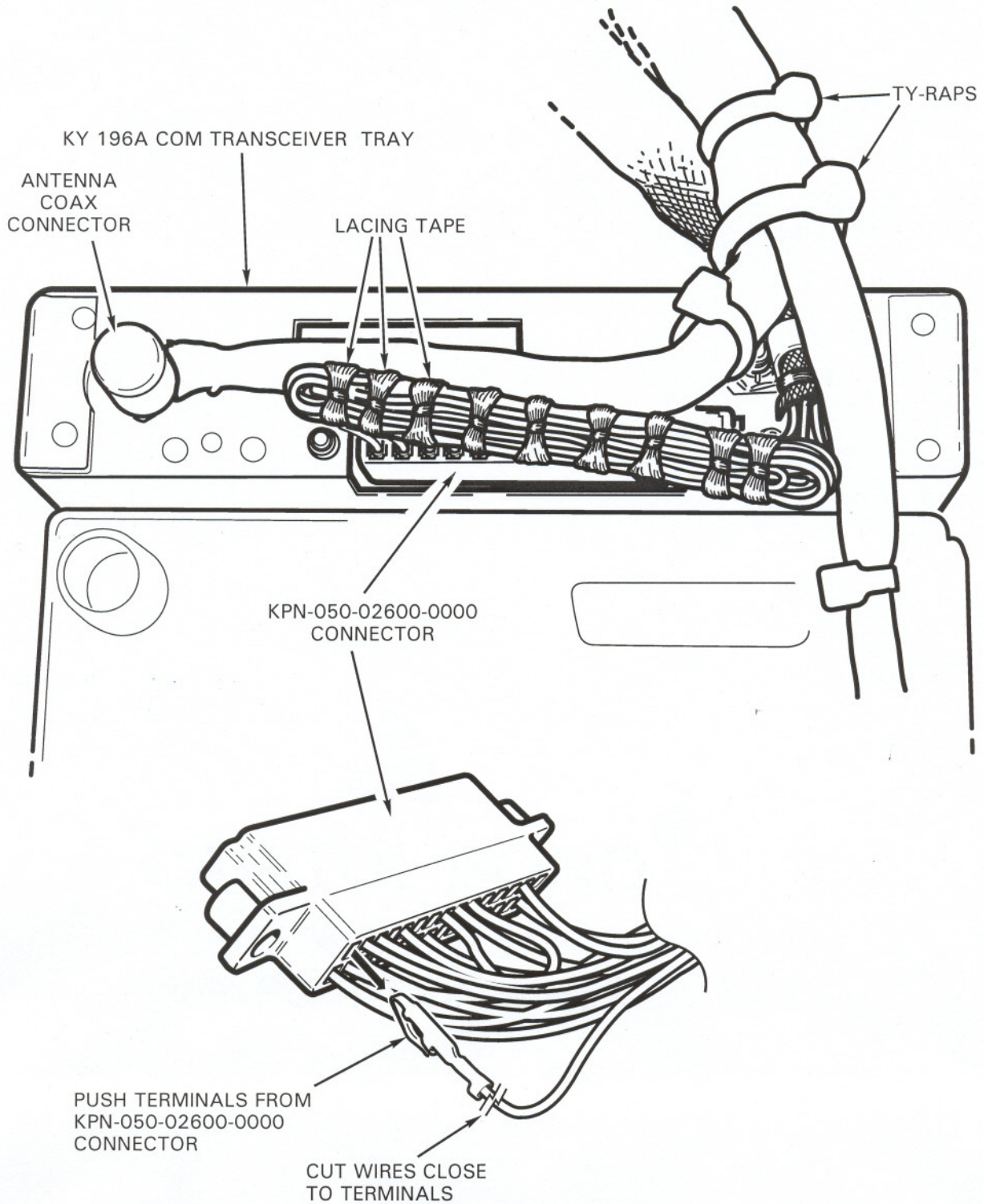
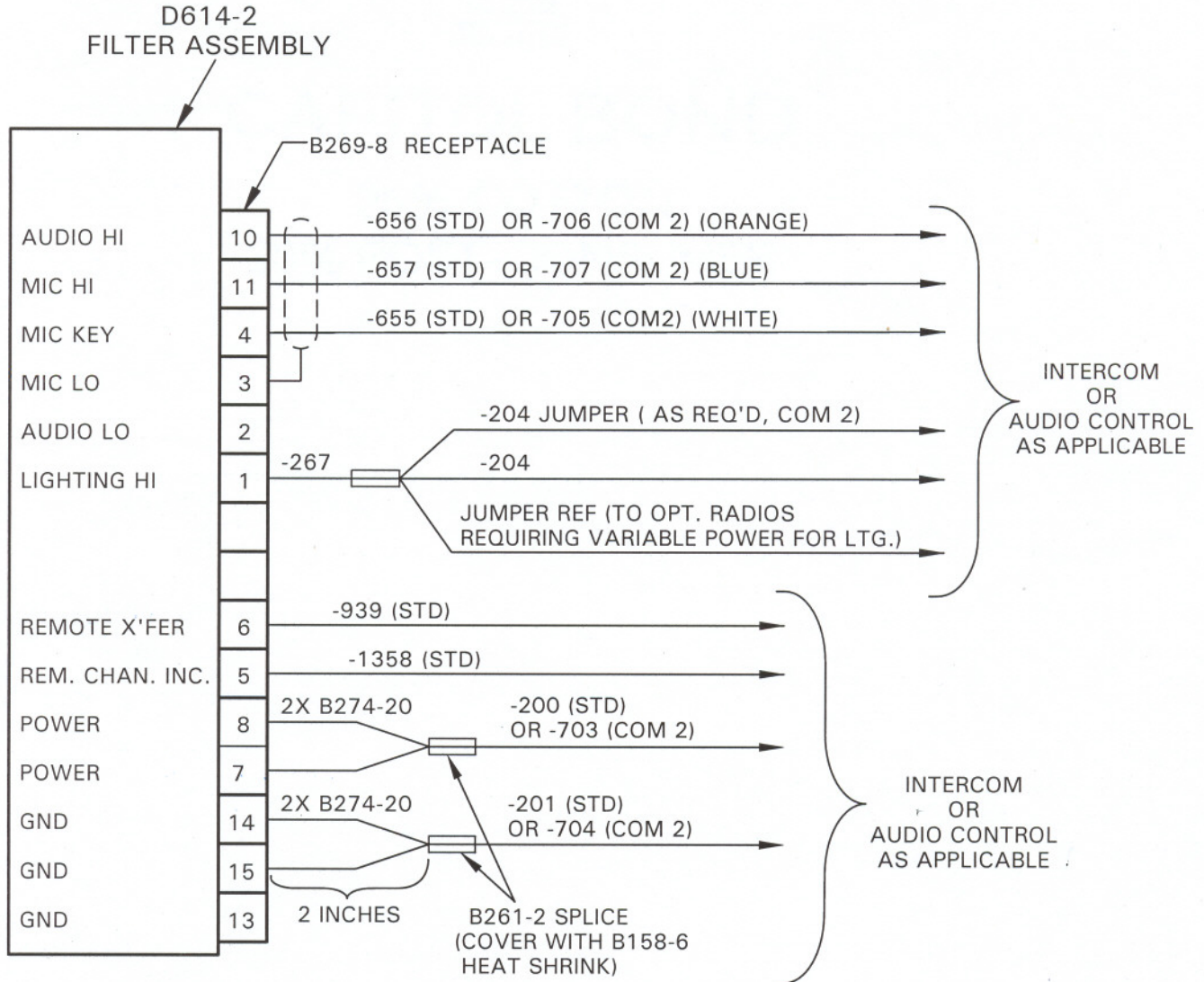


FIGURE 1 KY196A ORIGINAL WIRING INSTALLATION

By: HQ 13 OCT 06
Appvd: [Signature] 13 OCT 2006

Issued: 13 OCT 2006



B269-8 15-SOCKET RECEPTACLE

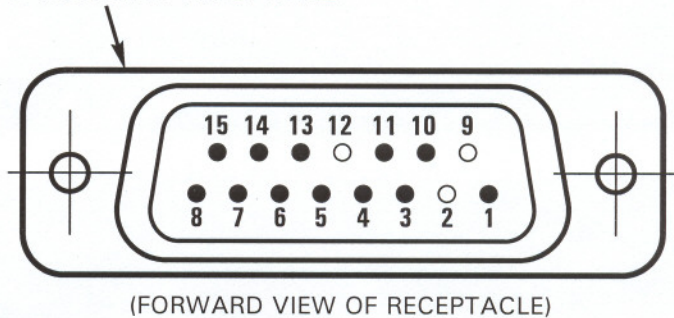


FIGURE 2 FILTER CONNECTION SCHEMATIC

By: HA 13 OCT 06
Appvd: [Signature] 13 OCT 2006

Issued: 13 OCT 2006

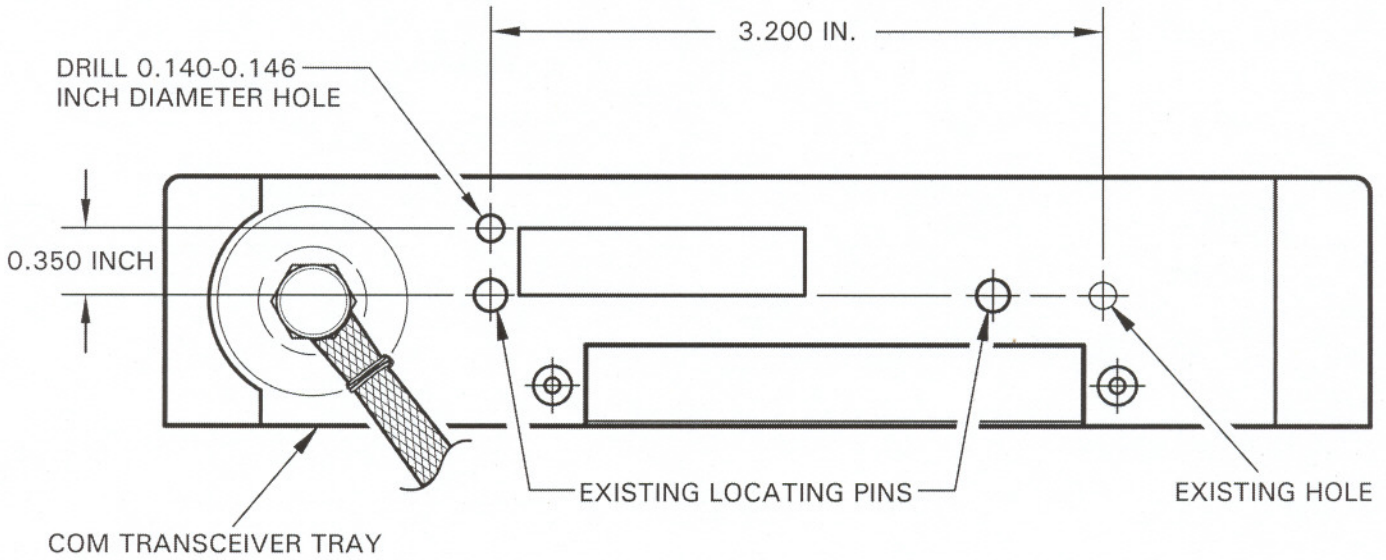


FIGURE 3 TRAY MODIFICATION

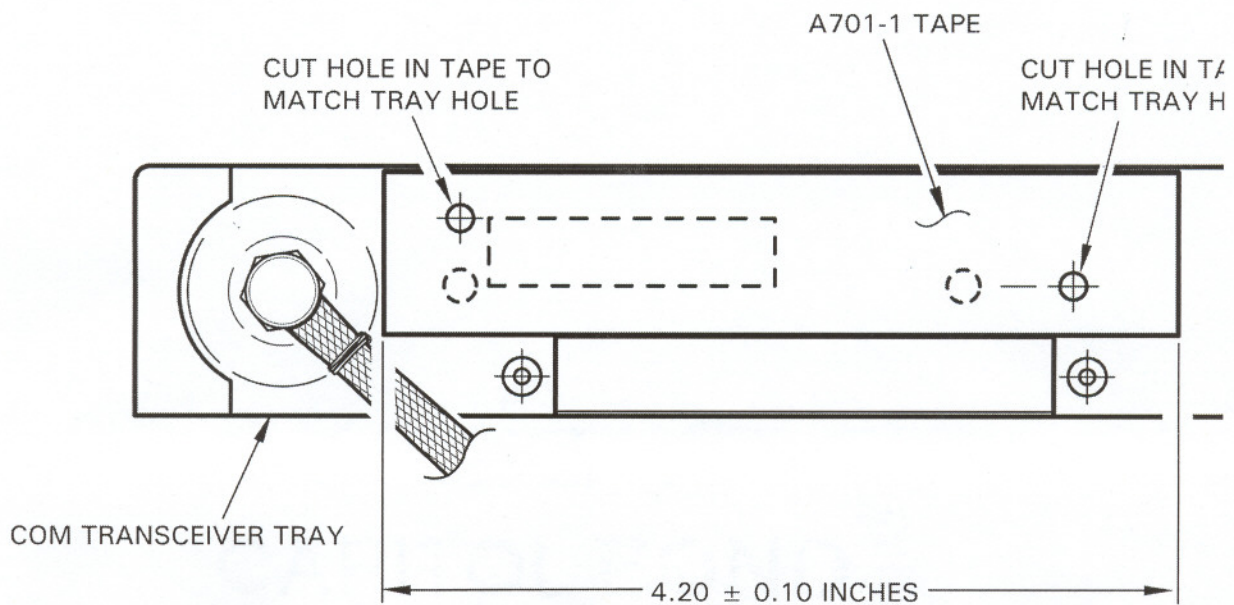


FIGURE 4 TRAY SHIELDING

By: HA 13 OCT 06
Appvd: [Signature] 13 OCT 2006

Issued: 13 OCT 2006

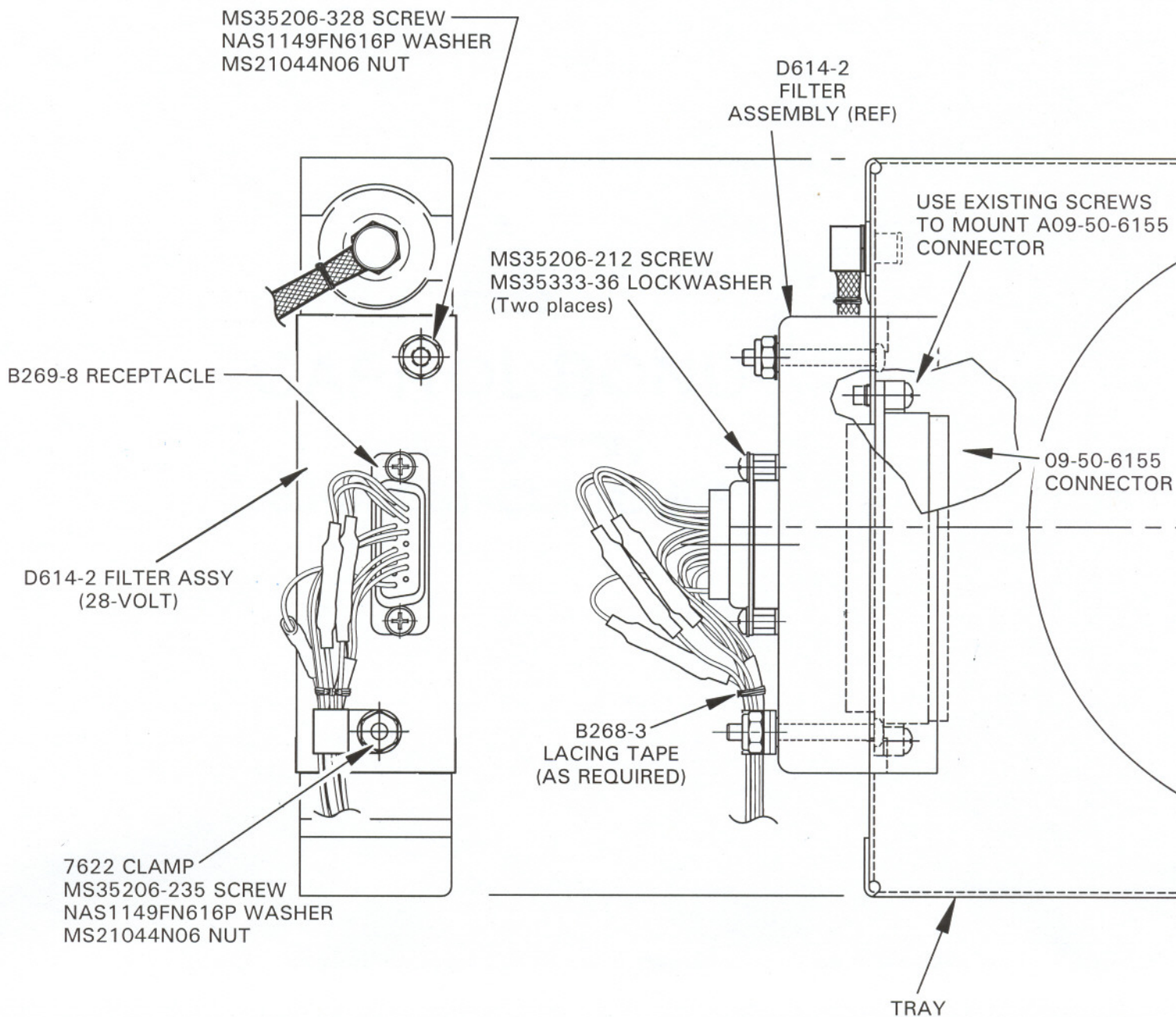


FIGURE 5 FILTER INSTALLATION

By: HA 13 OCT 06
Appvd: [Signature] 13 OCT 2006

Issued: 13 OCT 2006

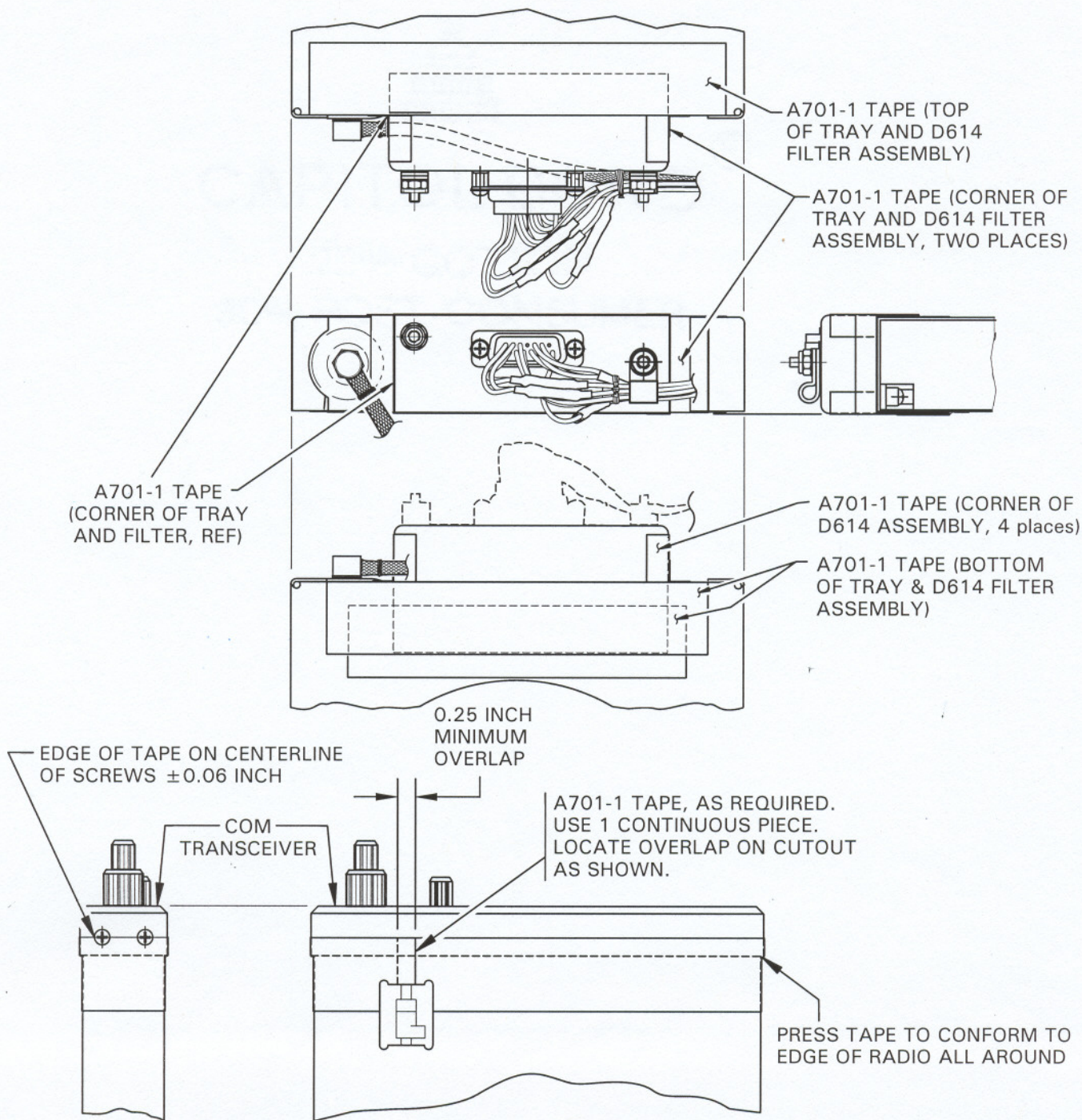


FIGURE 6 TRAY AND TRANSCEIVER SHIELDING

By: HGA 13 OCT 06
Appvd: Pat Cox 13 OCT 2006

Issued: 13 OCT 2006

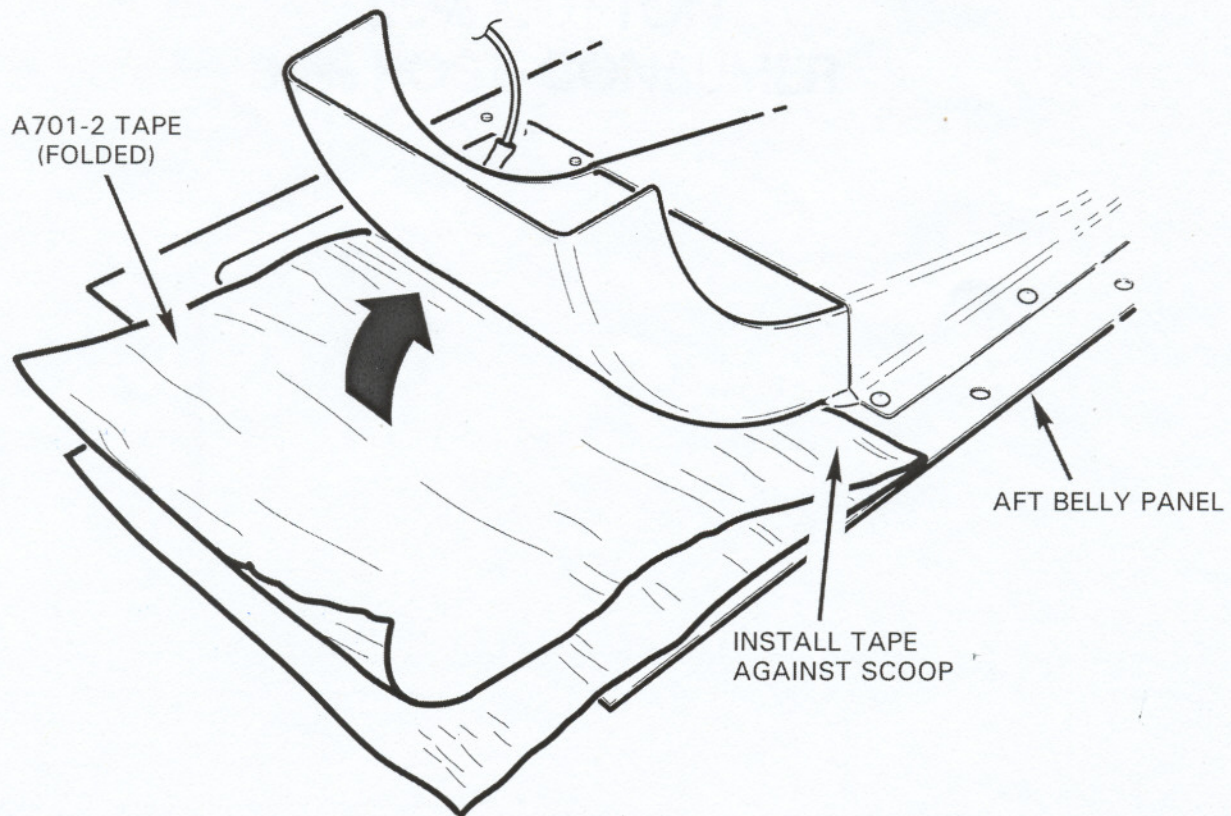


FIGURE 7 SCOOP SHIELDING

By: HA 13 OCT 06
Appvd: Pat Cox 13 OCT 2006

Issued: 13 OCT 2006

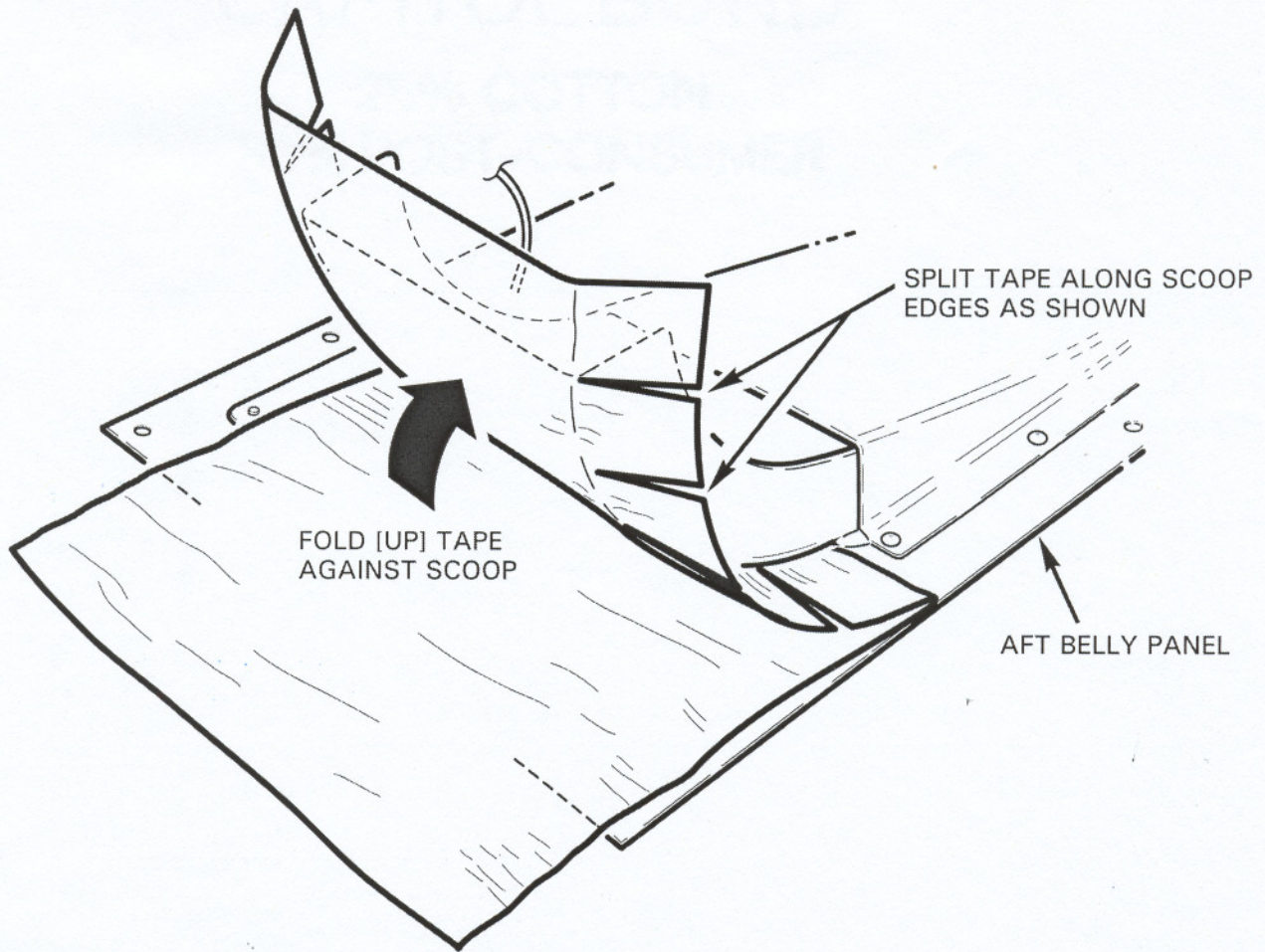


FIGURE 8 SCOOP SHIELDING

By: HA 13 OCT 06
Appvd: [Signature] 13 OCT 2006

Issued: 13 OCT 2006

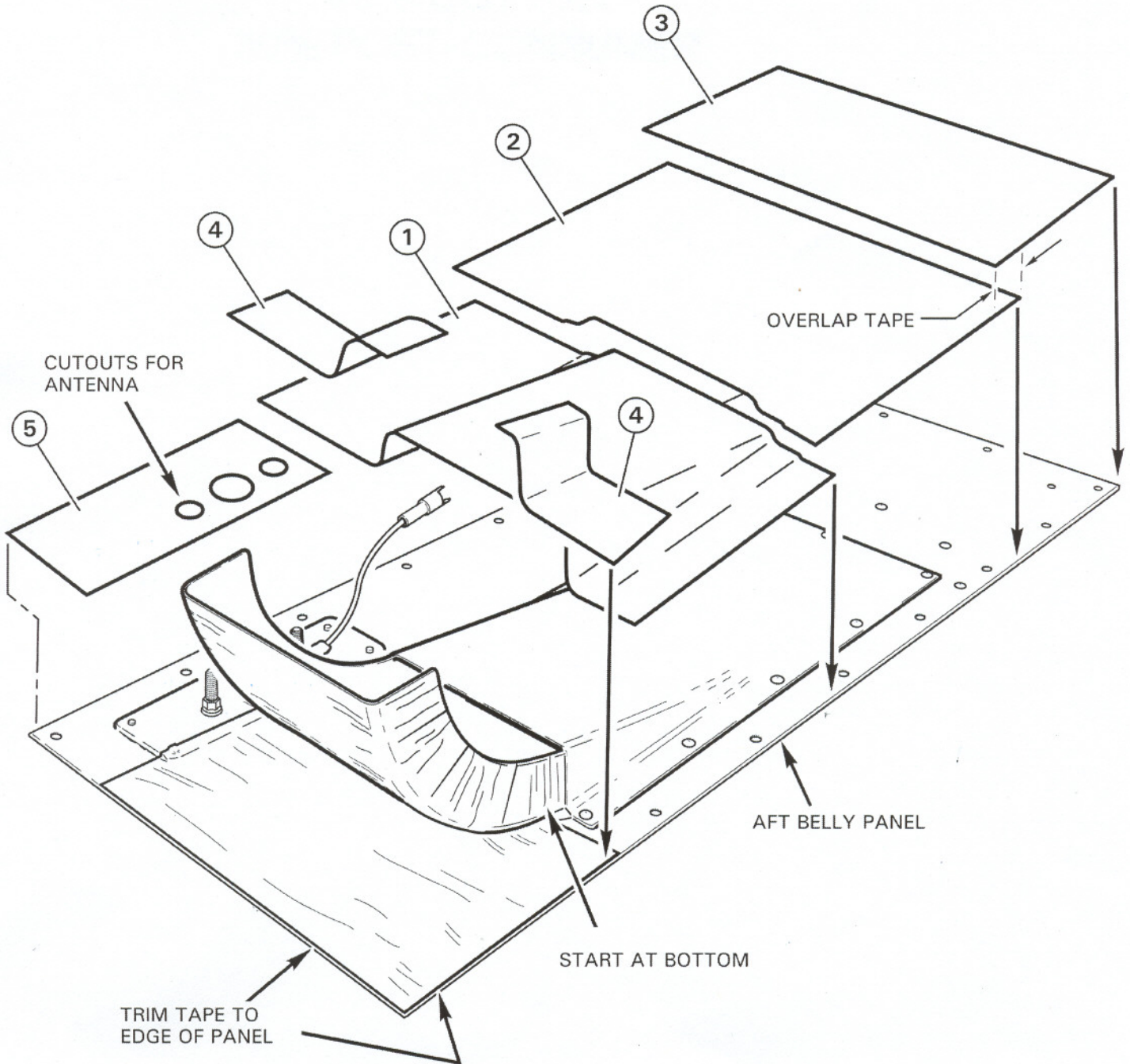


FIGURE 9 BELLY PANEL SHIELDING