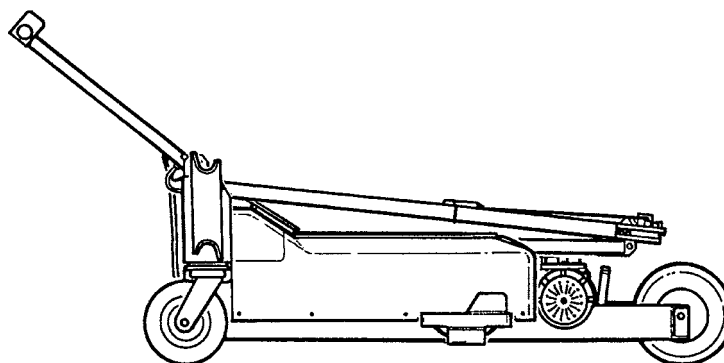


ROBINSON HELICOPTER COMPANY

MT950 GROUND HANDLING CART

OPERATING INSTRUCTIONS, MAINTENANCE MANUAL, AND ILLUSTRATED PARTS CATALOG



Robinson Helicopter Company
2901 Airport Drive
Torrance, California 90505-6115
UNITED STATES

Phone: (310) 539-0508
Fax: (310) 539-5198
Web: www.robinsonheli.com
Email: customerservice@robinsonheli.com

OFFICE HOURS

Monday through Friday, 7:30 a.m. to 4:30 p.m., Pacific Time.

Lunch hour is 11:30 a.m. to 12:30 p.m.

RHC holidays are listed online at: http://robinsonheli.com/rhc_technical_support.html.

TECHNICAL SUPPORT

Email: techsupport@robinsonheli.com

SPARES ORDERS

Email: cs1@robinsonheli.com

For spares orders after working hours, use e-mail, fax number, or leave voice-mail message with Customer Service.

CORRESPONDENCE REGARDING ORDERS

All correspondence regarding orders must reference the name of the Service Center, customer purchase order number, order date, name and signature of the authorized person placing the order. All personnel placing orders on behalf of a dealer or service center must have written authorization on file at RHC.

Intentionally Blank

CHAPTER LIST

	Introduction
Chapter 1	Operating Instructions
Chapter 2	Maintenance Manual
Chapter 3	Illustrated Parts Catalog
Chapter 4	Revision Log
Appendix A	Alphabetical Index
Appendix B	Numerical Index

Intentionally Blank

CATALOG FEATURES

INTRODUCTION

The catalog features:

1. A table of contents located in the front of the catalog.
2. Alphabetical and numerical indexes located in the back of the catalog.

PART DESIGNATION

Robinson parts are designated with a part number prefix "A", "B", "C", "D", or "E" followed by three digits and a dash number, such as A101-1. Robinson special tools are designated with a part number prefix "MT". For standard hardware items such as bolts, nuts, screws, etc., "AN", "MS", and "NAS" part numbers are used. When a rivet length is not specified, length must be determined by installer.

In some instances, vendor part numbers are also used.

ABBREVIATIONS

Assy - assembly	LH and RH - left hand and right hand
A/R - as required	MM - Maintenance Manual
Cont'd - continued	MR - main rotor
Fig. - figure	Ref - Part(s) "referenced" for clarity
Incl - includes	RHC - Robinson Helicopter Company
max - maximum	TR - tail rotor
min - minimum	

ORDERING AND SHIPPING

All orders must include instructions for shipping. All parts or components shipped to RHC must include a signed Component Return/Authorization Form. Return shipments must be paid for by the dealer or distributor. NOTE: Handling fees will be applied to all orders received which are under \$1,000.00. Orders shipped on an A.O.G. basis (24 hours domestic, 48 hours foreign) will be assessed additional charges.

WARRANTY

RHC will apply the same 1-year or 1000-hour RHC limited warranty to all parts and components purchased from RHC.

RETURNS

No unused parts may be returned to RHC for credit if the parts show any indication whatsoever of use or damage, or if the cost of the individual part was less than \$25 (U.S.). Parts returned within 30 days of purchase will be assessed a 20% restocking fee. No parts may be returned after 30 days without prior RHC approval. Any parts approved for return after 30 days will be assessed a 50% restocking fee.

REVISIONS

Before using this catalog, be sure it includes all current revised pages. A list of revised pages is located in the revision log in front of the catalog. If a new parts catalog is purchased, be sure to complete and mail the revision service application found in front of the catalog. This will ensure that you will receive all current revisions as they are published for a one-year period. The revision status of Robinson Technical Publications can be referenced on the internet at www.robinsonheli.com.

RHC reserves the right to cancel, add or change the parts and assemblies described in this catalog without notice.

PART INTERCHANGEABILITY

The following parts are interchangeable. Unless noted otherwise, whenever one part is referred to in this catalog, its substitute part is also permitted.

<u>PART:</u>	<u>INTERCHANGEABLE WITH:</u>
AN340 nut	MS35649 nut per NASM35649 except AN340B8 nut
AN345 nut	MS35650 nut per NASM35650
AN364 nut	MS21083 nut per NASM21083
AN507 screw	MS24693 screw per NASM24693
AN509 screw	MS24694 screw per NASM24694
AN515 screw	MS35206 screw per NASM35206
AN515C screw	MS51957 screw
AN515UB screw	B567-__ screw
AN525 & AN526 screw	MS27039C screw per NASM27039
AN814 & MS24391 plug	AS5169 plug
AN815 & MS24392 union	AS5174 union
AN819 & MS20819 sleeve	AS5176 sleeve
AN822 & MS20822 elbow	AS5195 elbow
AN823 & MS20823 elbow	AS5196 elbow
AN825 & MS20825 tee	AS5197 tee
AN826 & MS20826 tee	AS5198 tee
AN894 & MS24398 bushing	AS5173 bushing
AN900 gasket	MS35769 gasket per AS35769
AN924 nut & MS24400 nut	AS5178 nut
AN931 grommet	MS35489 grommet
AN935 lockwasher	B332-__ lockwasher
AN936 lockwasher	MS35335 lockwasher
AN960-4L washer	NAS1149FN416P washer
AN960-4 washer	NAS1149FN432P washer
AN960-6L washer	NAS1149FN616P washer
AN960-6 washer	NAS1149FN632P washer
AN960-8L washer	NAS1149FN816P washer
AN960-8 washer	NAS1149FN832P washer
AN960-10L washer	NAS1149F0332P washer
AN960-10 washer	NAS1149F0363P washer
AN960-416L washer	NAS1149F0432P washer
AN960-416 washer	NAS1149F0463P washer
AN960-516L washer	NAS1149F0532P washer
AN960-516 washer	NAS1149F0563P washer
AN960-616L washer	NAS1149F0632P washer
AN960-616 washer	NAS1149F0663P washer
AN960-816L washer	NAS1149F0816P washer
AN960-816 washer	NAS1149F0832P washer
AN960-1016L washer	NAS1149F1032P washer
AN960-1016 washer	NAS1149F1063P washer
AN960PD8L washer	NAS1149DN816P washer
AN960PD416L washer	NAS1149D0416J washer
AN960PD516L washer	NAS1149D0516J washer
AN960PD616L washer	NAS1149D0616J washer
AVDEL 1693 rivet	AVDEL 1691 rivet
MS20604ML4W1 rivet	MS20604M4W1 rivet per NASM20604
MS21919DG clamp	MS21919WDG clamp or AS21919 clamp
NAS1291 nut	MS21042L nut per NASM21042
NAS1303 thru NAS1320 bolt	NAS6603 thru NAS6620 bolt*
NAS487 instrument nut	MS33737 Instrument nut per NASM33737
NAS679A nut	NAS1291-__ nut or MS21042L nut per NASM21042
NAS679C M nut	NAS1291C M nut
NAS696 nutplate	MS21071 nutplate per NASM21071
NAS698 nutplate	MS21073 nutplate per NASM21073

*The following bolts must be NAS1300 series only: NAS1304-17, -28, -35, -37, & -38, and NAS1305-35.

CHAPTER 1
OPERATING INSTRUCTIONS

<u>Section</u>	<u>Title</u>	<u>Page</u>
1-00	Description	1.1
1-10	Controls	1.1
1-20	Operating Instructions	1.3
1-30	Standard R22 or R44	1.4
1-40	R22 Mariner / R44 Clipper (Utility or Pop-Out Floats)	1.5
1-50	R44 Police Helicopter / R44 Newscopter	1.7

Intentionally Blank

CHAPTER 1
OPERATING INSTRUCTIONS

1-00 Description

The MT950 Ground Handling Cart is a self-contained tug designed for use with the R22 (S/N 2500 & on) and R44 Helicopters, including the R22 Mariner and the R44 Clipper, Newscopter, and Police Helicopter. The ground handling cart allows a single operator to easily move the helicopter on a smooth hard surface. To use, the operator lifts the helicopter at either the ground handling ball or rear cross tube, installs the ground handling wheels, and pushes or pulls the helicopter to the desired location.

The ground handling cart is driven by a 1-hp, 24-volt D.C. motor powered by two 12-volt batteries connected in series. Batteries are charged by an on-board charger. A door above the batteries provides access to the battery terminals for helicopter jump starting.

1-10 Controls

All operator controls are located on the control handle and consist of the following:

Power Switch: Switches batteries on or off.

Up/Down Controls: Raise or lower lifting arm.

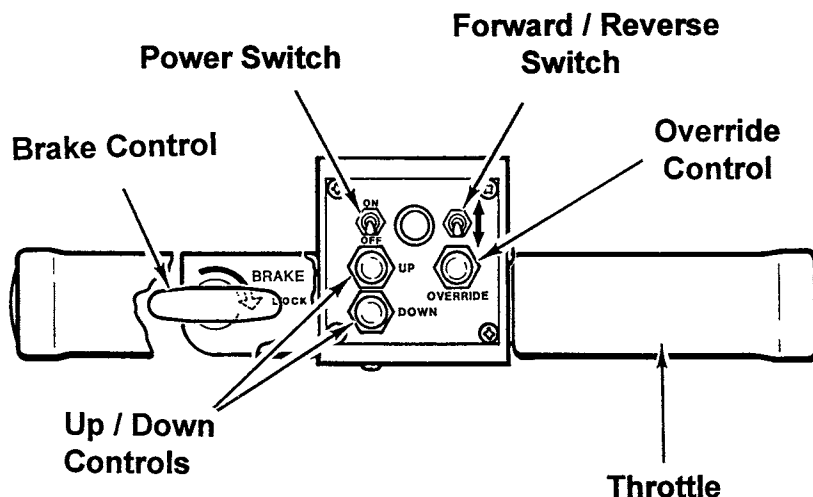
Override Control: Used with UP button to raise lifting arm to greater heights. For use on the R22 Mariner and the R44 Clipper, Newscopter and Police Helicopter.

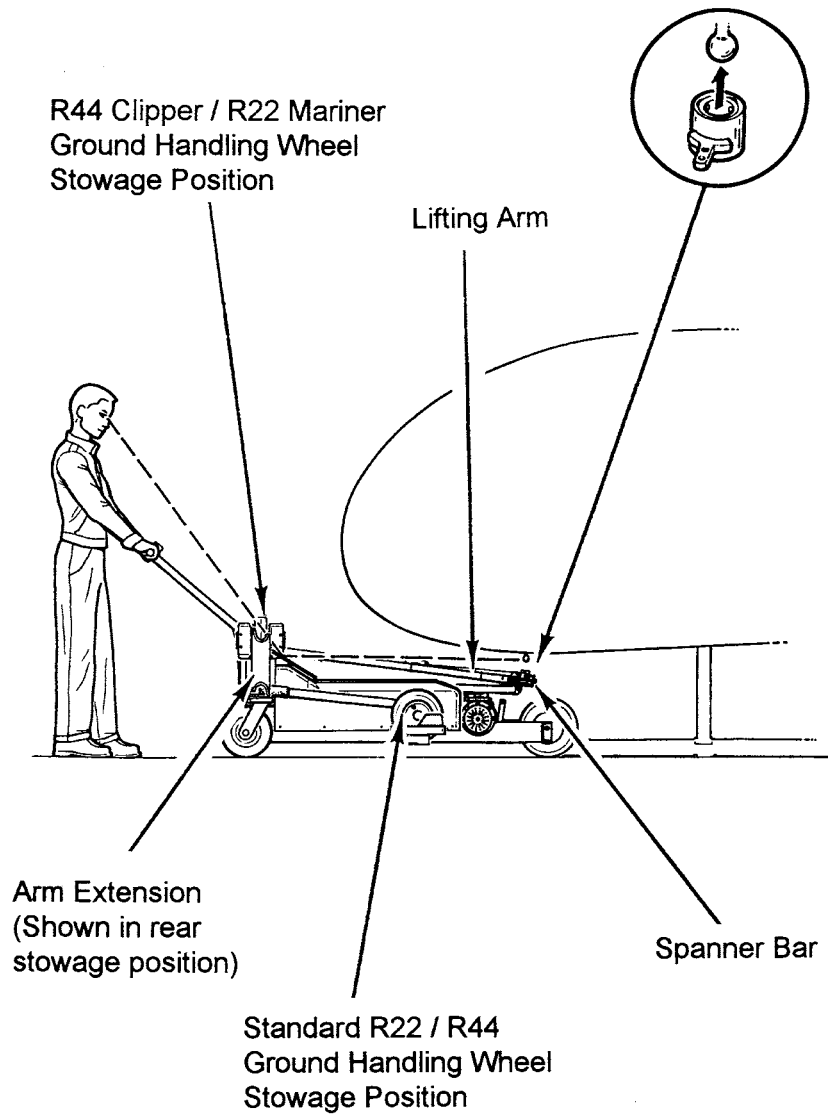
Forward/Reverse: Selects direction of travel.

Throttle: Twist-grip throttle controls speed of cart. Rolling throttle forward increases speed.

Control Handle: Side-to-side motion of control handle is used to guide cart.

Brake Control: Pulling up on handle applies brake; turning handle clockwise locks brake for parking.





1-20 Operating Instructions

1. Unplug charging cord from wall receptacle and stow in compartment.
2. Switch battery power on.
3. Verify parking brake is fully disengaged.
4. Place forward/reverse switch in desired direction of travel and apply throttle.
5. Approach and lift helicopter according to the following operating instructions for Standard R22 or R44, R22 Mariner / R44 Clipper, or R44 Police Helicopter / R44 Newscopter.

WARNING

Helicopter gross weight during lifting not to exceed 1950 lb.

CAUTION

Care must be taken while moving helicopter in confined areas. Small side-to-side movements at the ground handling ball cause large movements at tail of helicopter.

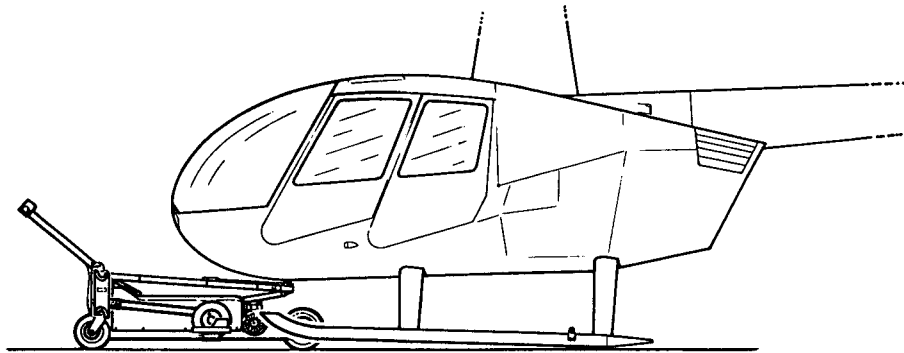
CAUTION

When lifting helicopter from the front, make sure ball enters socket properly. When lifting helicopter from the rear, make sure arm extensions cradle rear cross tube properly. Misalignment can cause severe damage to helicopter.

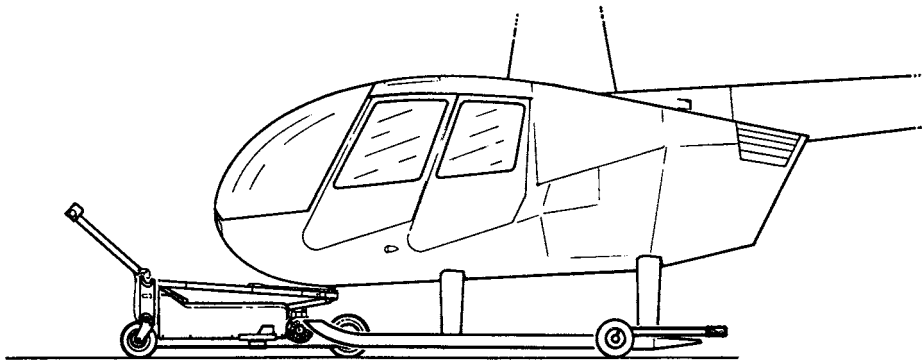
6. After use, switch cart power off and plug charger into wall receptacle.

1-30 Standard R22 or R44

1. Stow arm extensions in rear position.
2. Press DOWN to insure lifting arm is completely lowered.
3. Approach helicopter from front, in line with ball until cart reaches helicopter nose.
4. Position socket under ball.
5. Press UP to raise socket, stopping approximately 1 inch under ball.
6. Look in mirror and maneuver cart until light shines on ball.
7. Press UP to engage ball in socket.
8. Press UP to lift helicopter. Continue until motion stops. Set parking brake if required.



9. Install ground handling wheels per Section 8 of Pilot's Operating Handbook.



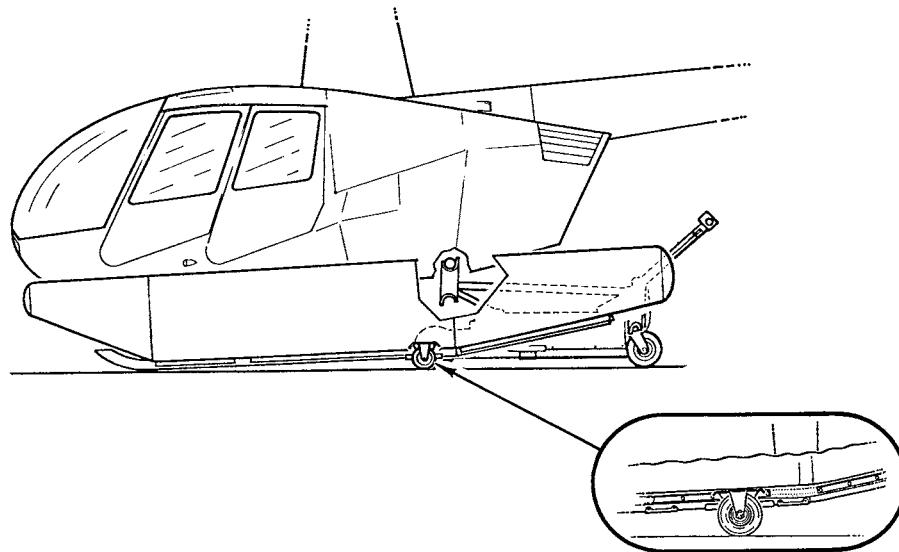
10. Release parking brake and maneuver helicopter to desired location.
11. Press DOWN button until motion stops.
12. Return ground handling wheels to holders on each side of cart and back cart away from helicopter.

CAUTION

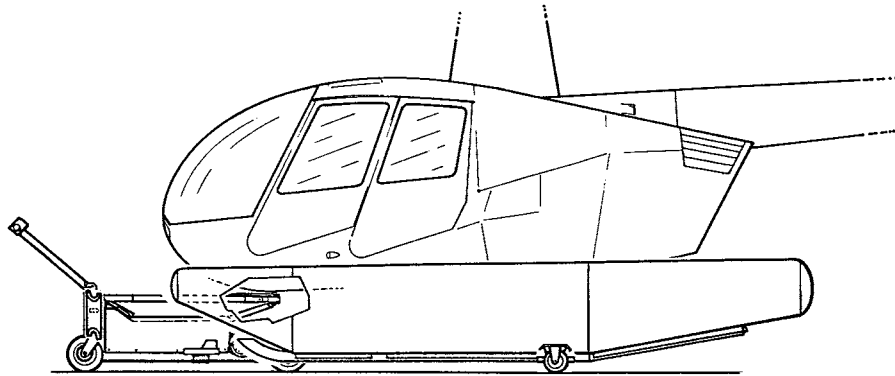
When removing ground handling wheels, the handle has a tendency to snap over.

1-40 R22 Mariner / R44 Clipper (Utility or Pop-Out Floats)

1. Install arm extensions onto spanner bar with R22 (Mariner) or R44 (Clipper) side facing up.
NOTE: Shorter side of cradle should face forward.
2. Press DOWN to insure lifting arm is completely lowered.
3. Approach helicopter from rear along centerline and position arm extensions under rear cross tube.
4. Press UP until arm extensions cradle rear cross tube. NOTE: Arm extensions may be aligned along cross tube by maneuvering cart forward and allowing the longer (aft) side of the cradles to bump cross tube.
5. Press UP & OVERRIDE to lift helicopter. Continue until wheels fit under skids.
6. Install ground handling wheels under skids forward of aft skid shoes as shown.



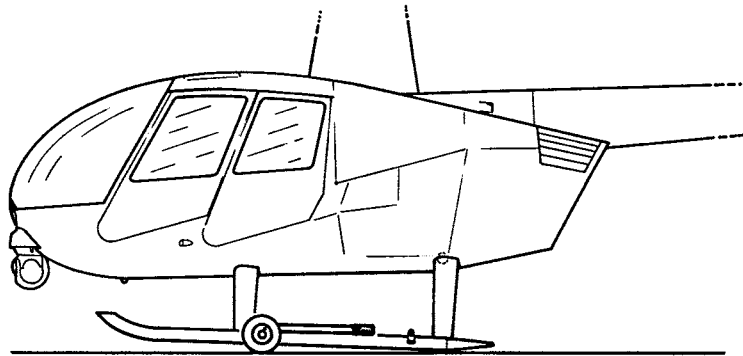
7. Press DOWN button until motion stops.
8. Back cart away from helicopter and stow arm extensions in rear position.
9. Approach helicopter from front, in line with ball until cart reaches helicopter nose.
10. Position socket under ball.
11. Press UP to raise socket, stopping approximately 1 inch under ball.
12. Look in mirror and maneuver cart until light shines on ball.
13. Press UP to engage ball in socket and lift helicopter. Continue until motion stops.

1-40 R22 Mariner / R44 Clipper (Utility or Pop-Out Floats); (continued)

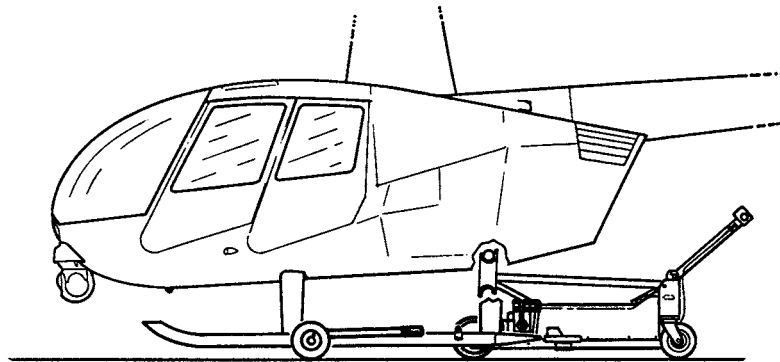
14. Maneuver helicopter to desired location.
15. Press DOWN button until motion stops and back cart away from helicopter.
16. Repeat steps 1-5 and remove ground handling wheels.
17. Press DOWN button until motion stops and back cart away from helicopter.

1-50 R44 Police Helicopter / R44 Newscopter

1. Install standard R44 ground handling wheels onto forward ground handling supports.



2. Install arm extensions onto spanner bar with R44 side facing up. NOTE: Shorter side of cradle should face forward.
3. Press DOWN to insure lifting arm is completely lowered.
4. Approach helicopter from rear along centerline and position arm extensions under rear cross tube.
5. Press UP until arm extensions cradle rear cross tube. NOTE: Arm extensions may be aligned along cross tube by maneuvering cart forward and allowing the longer (aft) side of the cradles to bump cross tube.
6. Press UP & OVERRIDE to lift helicopter clear of ground.



7. Maneuver helicopter to desired location.
8. Press DOWN until motion stops and back cart away from helicopter.
9. Return ground handling wheels to holders on each side of cart.

Intentionally Blank

CHAPTER 2
MAINTENANCE MANUAL

<u>Section</u>	<u>Title</u>	<u>Page</u>
2-00	Charging	2.1
2-10	Drive Chain	2.1
2-20	Tire Pressure	2.1

Intentionally Blank

CHAPTER 2
MAINTENANCE MANUAL

2-00 Charging

To charge batteries, plug in cord found in compartment at base of handle. Two lights on end of charger opposite power cord indicate status: red light indicates power on, yellow light indicates charging and turns green when fully charged. To ensure that batteries are always fully charged, and to increase battery life, leave cart plugged in when not in use. The charger is automatic and will not overcharge batteries.

NOTE

Before first use, voltage selector on charger (next to power cord connector) must be set correctly for AC power source being used. Use 115V setting USA/Canada (115 VAC) and Japan (100 VAC); use 230V setting for UK(240 VAC) and Europe (220 VAC). Supplied power cord fits USA outlets, but is easily replaced by any cord with standard IEC-320/C13 type connector.

2-10 Drive Chain

The drive chain must be kept well lubricated and free of dirt.

2-20 Tire Pressure

Tires should be inflated to a pressure of 60 p.s.i. (Front Tires) and 125 p.s.i. (Rear Tires).

Intentionally Blank

CHAPTER 3
ILLUSTRATED PARTS CATALOG

<i>Figure</i>	<i>Title</i>	<i>Page</i>
3-1	MT950-1 Tow Cart Assembly - Universal	3.0
3-5	MT950-1 Tow Cart - Micro Switch Installation	3.4
3-7	MT950-1 Tow Cart - Arm Assembly	3.6
3-11	MT950-1 Tow Cart - Drive Components	3.10
3-13	MT950-1 Tow Cart - Brake Components	3.12
3-15	MT950-1 Tow Cart - Handle Assembly	3.14
3-19	MT950-1 Tow Cart - Battery & Charger Installation	3.18

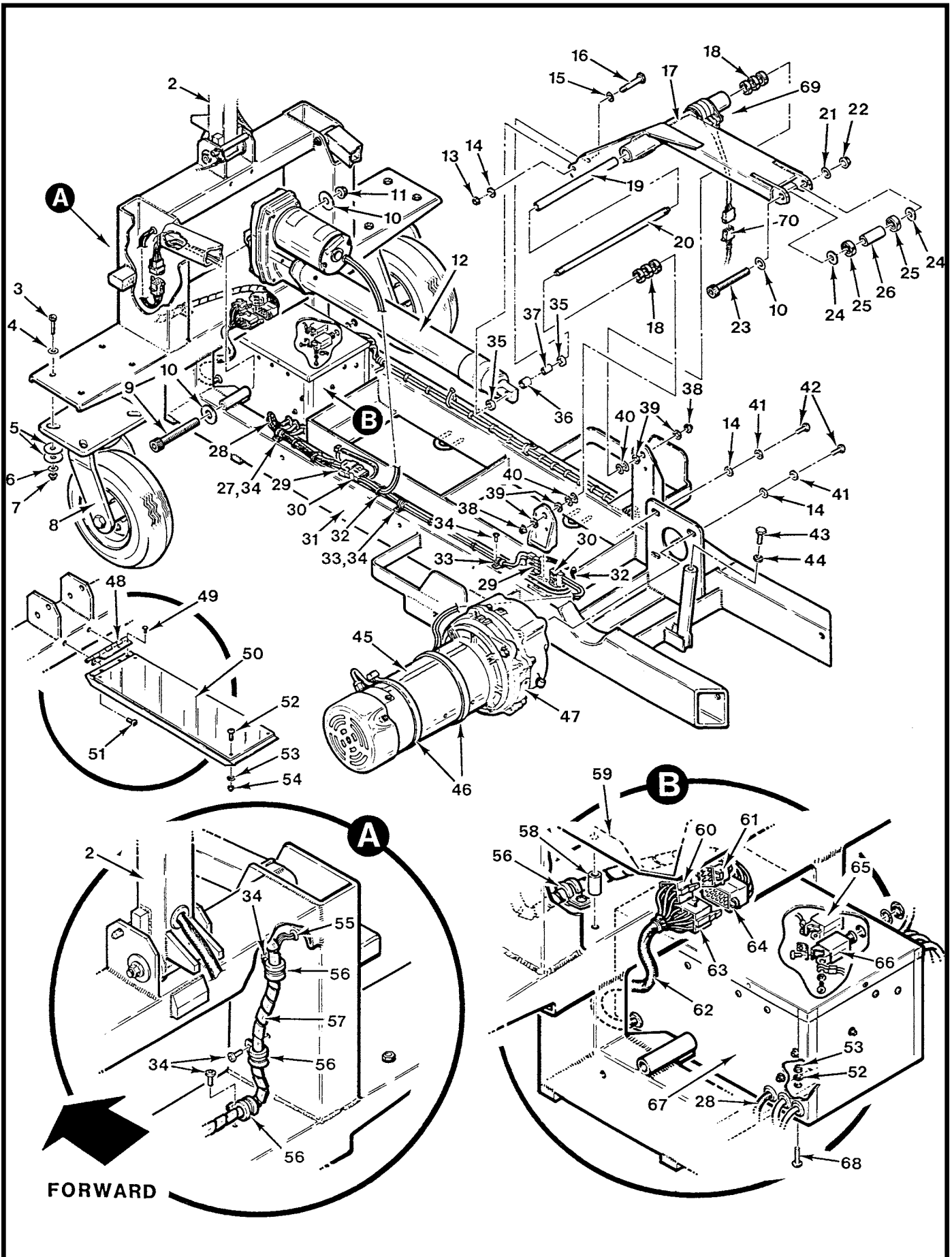


FIGURE AND INDEX NUMBER	PART NUMBER	DESCRIPTION	PARTS AVAIL	QTY PER ASSY
		MT950-1 TOW CART ASSEMBLY - UNIVERSAL		
3-1-1	MT950-1	Universal Tow Cart (Includes all components, Figures 3-1 thru 3-19.)	X	1
2	MT905-2	Handle Assembly (Ref; See Figure 3-15)		
3	NAS6604-10	Bolt	X	8
4	NAS1149F0463P	Washer	X	8
5	AN970-4	Washer	X	16
6	A214-6	Washer	X	8
7	MS21042L4	Nut	X	8
8	S-7008	Caster	X	2
9	91251A029	Cap Screw	X	1
10	NAS1149F0832P	Washer	X	3
11	NAS1291-8	Nut	X	1
12	MT999-1	Actuator Assembly (Incl item 30)	X	1
13	MS21042L5	Nut	X	1
14	NAS1149F0563P	Washer	X	5
15	NAS1149F0532P	Washer	X	1
16	NAS6605-24	Bolt	X	1
17	MT952-1	Lifting Arm Weldment (see also Figure 3-5)	X	1
18	A647-12	Bearing ([3] per side)	X	6
19	MT962-1	Spacer	X	1
20	MT962-2	Shaft	X	1
21	NAS1149F0632P	Washer	X	1
22	21FKF-616	Washer	X	1
23	91259A723	Bolt	X	1
24	NAS1149F0863P	Washer	X	2
25	C647-13	Bearing	X	2
26	MT920-12	Spacer	X	1
27	MS21919WDG8	Clamp	X	1
28	B266-4	Sleeving (0.25 in. dia, expandable)	X	A/R
29	B263-67	Plug	X	2
	B263-56	Socket ([2] each plug)	X	4

NOTES

Continues

FIGURE AND INDEX NUMBER	PART NUMBER	DESCRIPTION	PARTS AVAIL	QTY PER ASSY
		MT950-1 TOW CART ASSEMBLY - UNIVERSAL (Cont'd)		
3-1-30	B263-68	Housing ([1] each to items 12 and 45)	X	2
	B263-55	Pin ([2] to each housing)	X	4
31	MT951-1	Frame Weldment	X	1
32	MS3367-5-9	Ty-Rap (secures wires and connectors)	X	A/R
33	MS21919WDG6	Clamp (RH)	X	2
34	MS27039C1-06	Screw	X	6
35	MT920-10	Spacer (Ref, no longer available. For use with item 17 [MT952-1] Revision "B" and prior.)	X	2
36	07DU12	Bearing	X	1
37	MT920-11	Spacer	X	1
38	MS21042L6	Nut	X	2
39	NAS1149F0663P	Washer	X	4
40	NAS1149F0632P	Washer (use as required to fill gap between item 18 and frame post)	X	A/R
41	B332-45	Lockwasher	X	4
42	MS20074-05-05	Bolt	X	4
43	92865A215	Bolt	X	1
44	AN316-6R	Nut	X	1
45	MT900-3	Motor Assembly (Incl item 30)	X	1
46	MS3367-6-0	Ty-Rap (secures motor wiring)	X	2
47	MT996-1	Speed Reducer	X	1
48	MT933-4	Hinge	X	1
49	MS20470AD4	Rivet	X	1
50	MT933-5	Mirror (includes MT933-2 mirror, & items 52 thru 54 [4] each)	X	1
	MT933-2	Mirror (mirror panel only)	X	1
51	MS27039C0806	Screw	X	2
52	MS27039C0807	Screw	X	4
53	NAS1149FN816P	Washer	X	8
54	MS21042L08	Nut	X	8
55	MS35489-33	Grommet	X	1
56	MS21919WDG7	Clamp	X	3

NOTES

Continues

FIGURE AND INDEX NUMBER	PART NUMBER	DESCRIPTION	PARTS AVAIL	QTY PER ASSY
		MT950-1 TOW CART ASSEMBLY - UNIVERSAL (Cont'd)		
3-1-57	MT972-4	Wire Harness Assembly (Ref)		
	B161-8	Spirap (spiral wire wrap)	X	A/R
58	90309A032	Spacer (Ref, see Figure 3-19)		
59	MT938-1	Tray (Ref, see Figure 3-19)		
60	B263-19	Housing	X	1
	B263-2	Socket	X	6
61	B263-18	Housing	X	1
	B263-1	Pin	X	6
62	B266-8	Sleeving (1/2 in. dia, expandable)	X	A/R
63	B263-25	Housing	X	1
	B263-2	Socket	X	15
64	B263-24	Housing	X	1
	B263-1	Pin	X	15
65	B297-5	Circuit Breaker (5-amp)	X	1
66	B297-20	Circuit Breaker (20-amp)	X	1
67	MT975-1	Box Assembly - Electrical Control (Ref, superseded by MT970-1 box assembly. Contact Customer Service for replacement.)		
	MT970-1	Box Assembly - Electrical Control (not shown)	X	1
68	MS27039C0810	Screw	X	4
69	MT972-1	Switch Assembly - Micro (Ref; see Figure 3-5)		
70	B263-17	Housing	X	1
	B263-2	Socket	X	4

NOTES

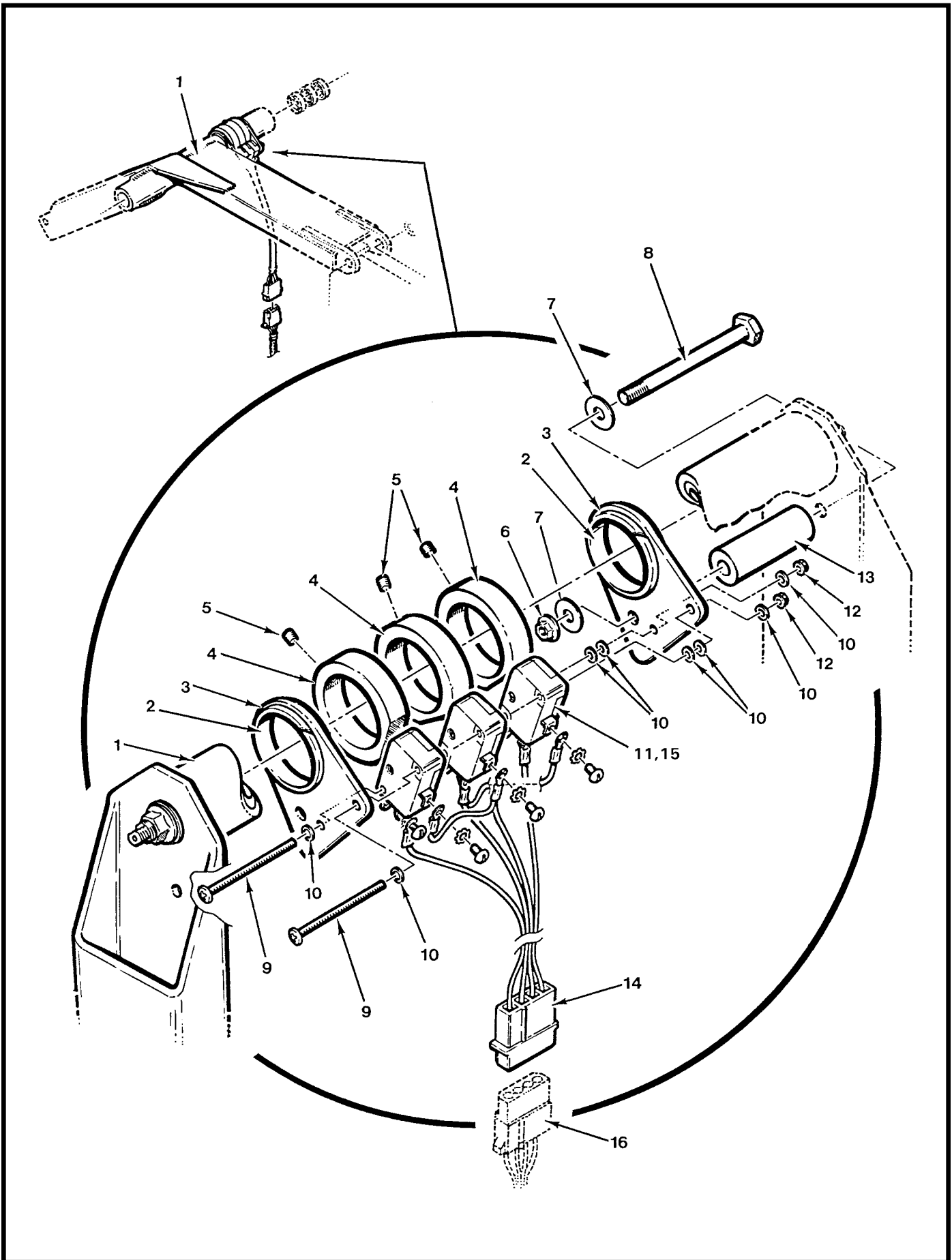


FIGURE AND INDEX NUMBER	PART NUMBER	DESCRIPTION	PARTS AVAIL	QTY PER ASSY
MT950-1 TOW CART - MICRO SWITCH INSTALLATION				
3-5-1	MT952-1	Lifting Arm Weldment	X	1
2	NAS557-18B	Grommet	X	2
3	MT915-3	Bracket	X	2
4	MT915-4	Collar	X	3
5	52025	Set Screw	X	3
6	MS21042L3	Nut	X	1
7	NAS1149F0332P	Washer	X	1
8	NAS6603-31	Bolt	X	1
9	91772A120	Screw	X	2
10	NAS620-4	Washer	X	12
11	V3-1	Switch - Micro	X	3
12	MS21042L04	Nut	X	2
13	MT920-13	Spacer	X	1
14	B263-16	Housing	X	1
	B263-1	Pin	X	4
15	MT972-1	Switch Assembly - Micro (includes items 2, 3, 9 thru 12, 14, wires and heat shrink as an assembled unit)	X	1
16	B263-17	Housing (Ref; see also Figure 3-19)	X	1
	B263-2	Socket	X	4

NOTES

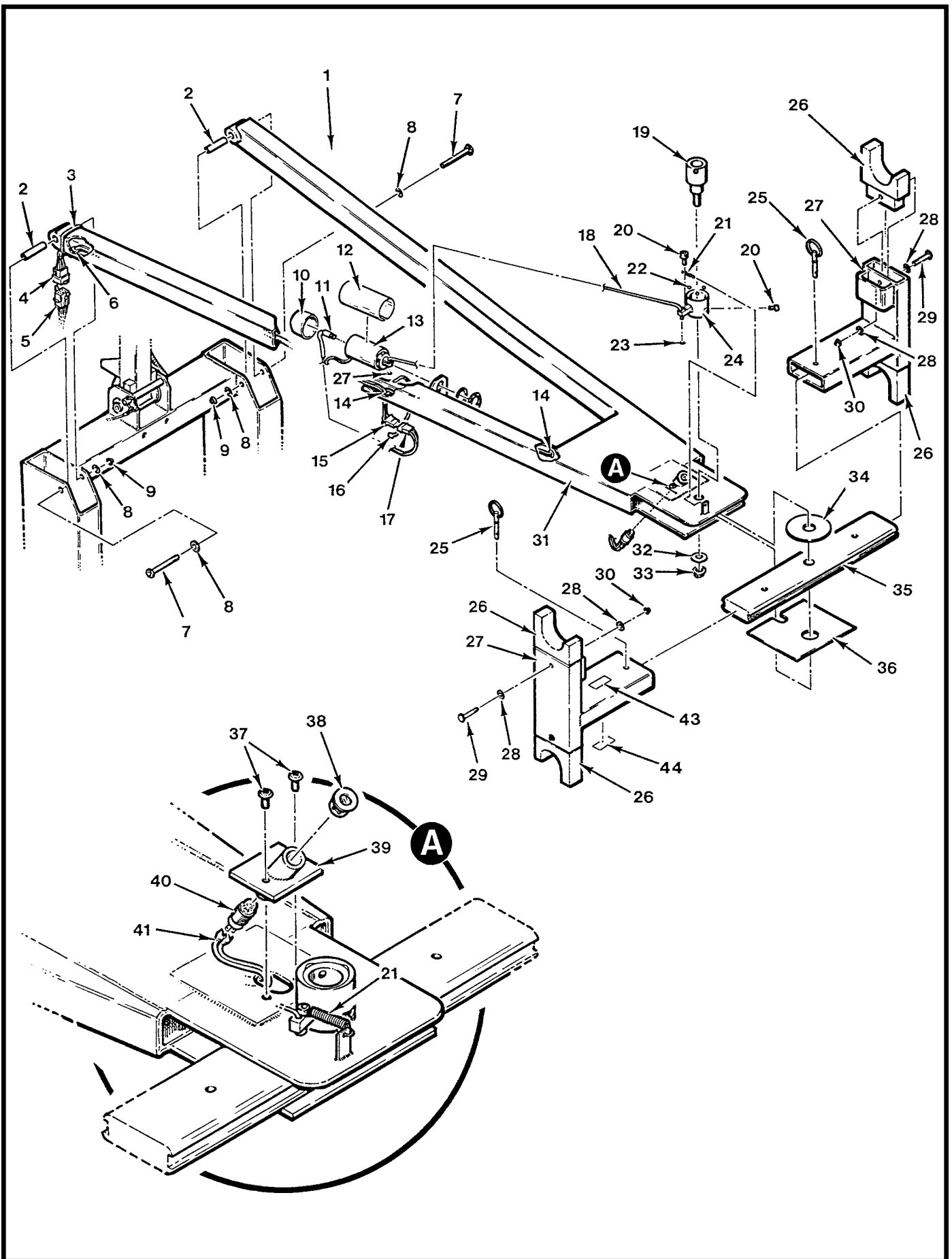


FIGURE AND INDEX NUMBER	PART NUMBER	DESCRIPTION	PARTS AVAIL	QTY PER ASSY
MT950-1 TOW CART - ARM ASSEMBLY				
3-7-1	MT954-1	Arm Assembly - Long (Incl items 4, 6, 10, 13, 14 thru 16, 18 thru 24, 31, and 34 thru 42)	X	1
2	MT920-4	Spacer	X	2
3	MS3367-7-9	Ty-Rap	X	1
4	B263-18	Housing	X	1
5	B263-19	Housing	X	1
6	MS35489-4	Grommet	X	1
7	NAS6604-31	Bolt	X	2
8	NAS1149F0432P	Washer	X	4
9	MS21042L4	Nut	X	2
10	1.500-16	End Cap	X	1
11	B227-2	Switch - Push Button (includes lockwasher and nut)	X	1
12	MT904-3	Cover	X	1
13	MT972-5	Solenoid Assembly (includes items 11, 17, wires & heat shrink)	X	1
	MT904-2	Solenoid Assembly (includes items 11, B263-14 housing, B263-1 and -3 pins, wires and heat shrink)	X	1
	MT904-4	Solenoid Assembly (includes B263-12 housing & B263-1 pins)	X	1
14	MS35489-1	Grommet	X	2
15	MT969-2	Harness Assembly (includes B263-13 housing [1], B263-2 socket [2], wires and B263-1 pin [2], and item 14)	X	1
	MT972-3	Harness Assembly (Ref, superseded by MT969-2; used with MT972-5 solenoid assembly. Contact RHC Customer Service for replacement.)		
16	MS3367-4-9	Ty-Rap	X	2
17	B263-16	Housing	X	1
	B263-1	Pin	X	4
18	MT910-2	Wire	X	1
19	MT909-5	Socket	X	1
20	NAS1352-08LE6P	Screw	X	2
21	E0240-029-1120S	Spring	X	1
22	B208-1	Ball	X	3
23	57485K62	Collar	X	2
24	MT909-1	Sleeve	X	1

NOTES

Continues

FIGURE AND INDEX NUMBER	PART NUMBER	DESCRIPTION	PARTS AVAIL	QTY PER ASSY
MT950-1 TOW CART - ARM ASSEMBLY (Cont'd)				
3-7-25	98470A130	Pin	X	2
26	MT997-6	Cradle	X	4
27	MT997-1	Weldment	X	2
28	NAS1149F0332P	Washer	X	8
29	NAS6603-16	Bolt	X	4
30	MS21042L3	Nut	X	4
31	MT919-1	Weldment	X	1
32	NAS1149F0863P	Washer	X	1
33	NAS1291-8	Nut	X	4
34	MT954-4	Washer	X	1
35	MT997-3	Bar	X	1
36	MT954-5	Pad (install using item 42)	X	1
37	MS27039C0805	Screw	X	2
38	MT940-1	Light Cap Assembly (includes lens)	X	1
39	MT928-7	Weldment	X	1
40	L8017	Lamp	X	1
41	MT922-2	Harness Assembly (includes item 14[1])	X	1
	MT972-2	Harness Assembly (Ref, superseded by MT922-2)		
42	B270-9	Adhesive	X	A/R
43	MT935-10	Decal - "R44"	X	2
44	MT935-9	Decal - "R22"	X	2

NOTES

Intentionally Blank

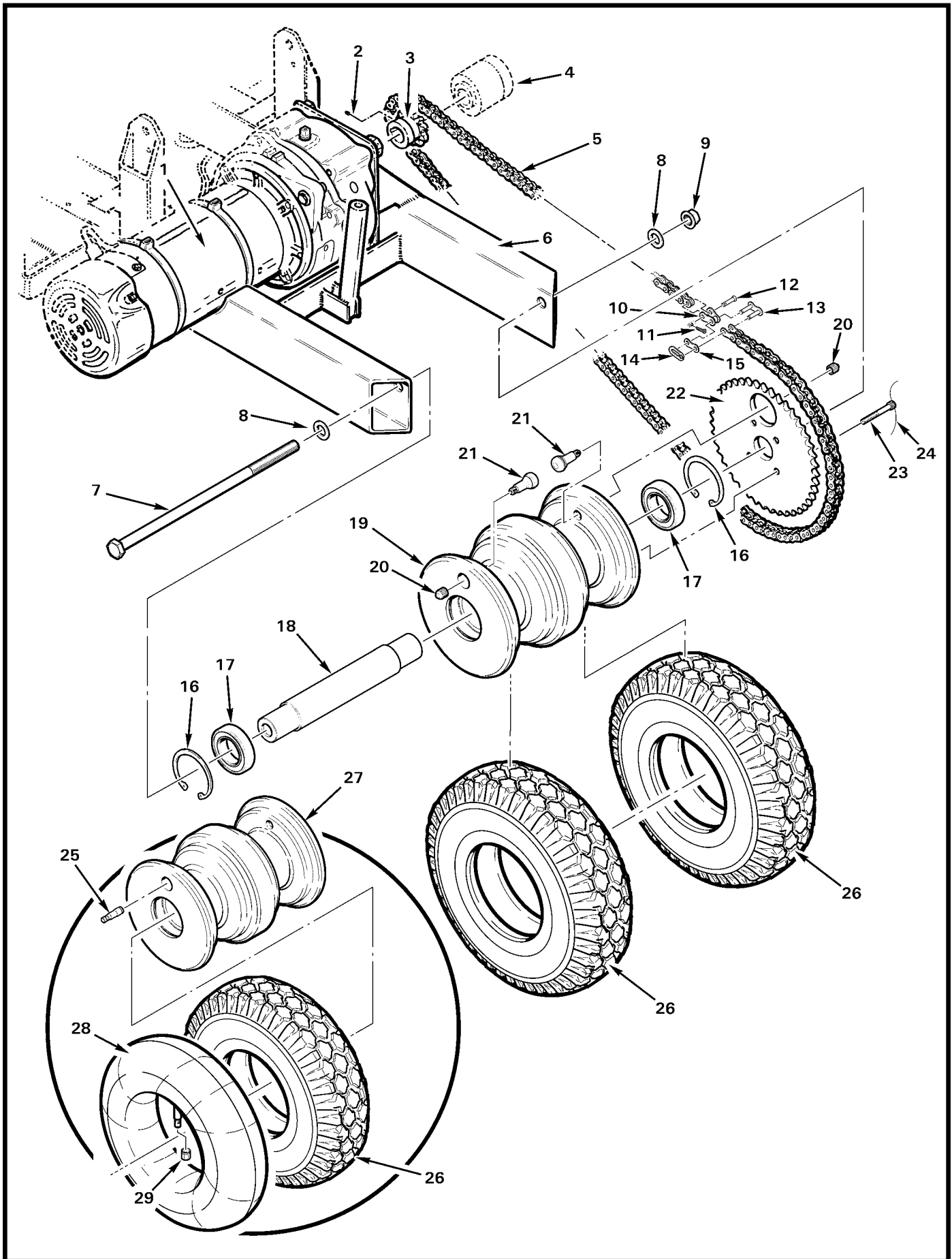


FIGURE AND INDEX NUMBER	PART NUMBER	DESCRIPTION	PARTS AVAIL	QTY PER ASSY
		MT950-1 TOW CART - DRIVE COMPONENTS		
3-11-1	MT900-3	Motor Assembly (Ref, see also Figure 3-1)		
2	90289A353	Set Screw	X	1
3	R5364	Sprocket (Incl item 2)	X	1
4	MT945-7	Drum (Ref, see also Figure 3-39)		
5	MT914-1	Chain Assembly (Incl items 10 and 13)	X	1
6	MT951-1	Frame Weldment (Ref)		
7	86501970	Bolt, Axle (½-20 x 11 inches)	X	1
8	NAS1149F0863P	Washer	X	2
9	NAS1291-8	Nut	X	1
10	MT914-5	Link - Offset (Incl items 11 and 12)	X	1
11	—	Cotter Pin	O	1
12	—	Stud	O	1
13	MT914-3	Link - Connecting (Incl items 14 and 15)	X	1
14	—	Spring Clip (#40)	O	1
15	—	Plate	O	1
16	MS16625-1218	Retaining Ring	X	2
17	9106PP	Bearing	X	2
18	MT959-2	Shaft	X	1
19	MT959-3	Hub (supersedes item 28)	X	1
20	—	Cap - Valve Stem	O	1
21	TR-413	Valve Stem	X	2
22	MT913-1	Sprocket	X	1
23	NAS1352-4H30P	Screw	X	4
24	MS20995C32	0.032 in. dia. Safety Wire	X	A/R
25	6241-M*	Valve Extension (1.10 in. length)	X	1
	6241-J*	Valve Extension (1.35 in. length)	X	1
	6241-G*	Valve Extension (1.60 in. length)	X	1
26	MT936-3	Tire	X	2
27	MT959-1	Hub (Ref, no longer available; used with item 28)		
28	MT936-4	Inner Tube (Incl item 29)	X	2
29	—	Cap - Valve	O	1

NOTES * If equipped.

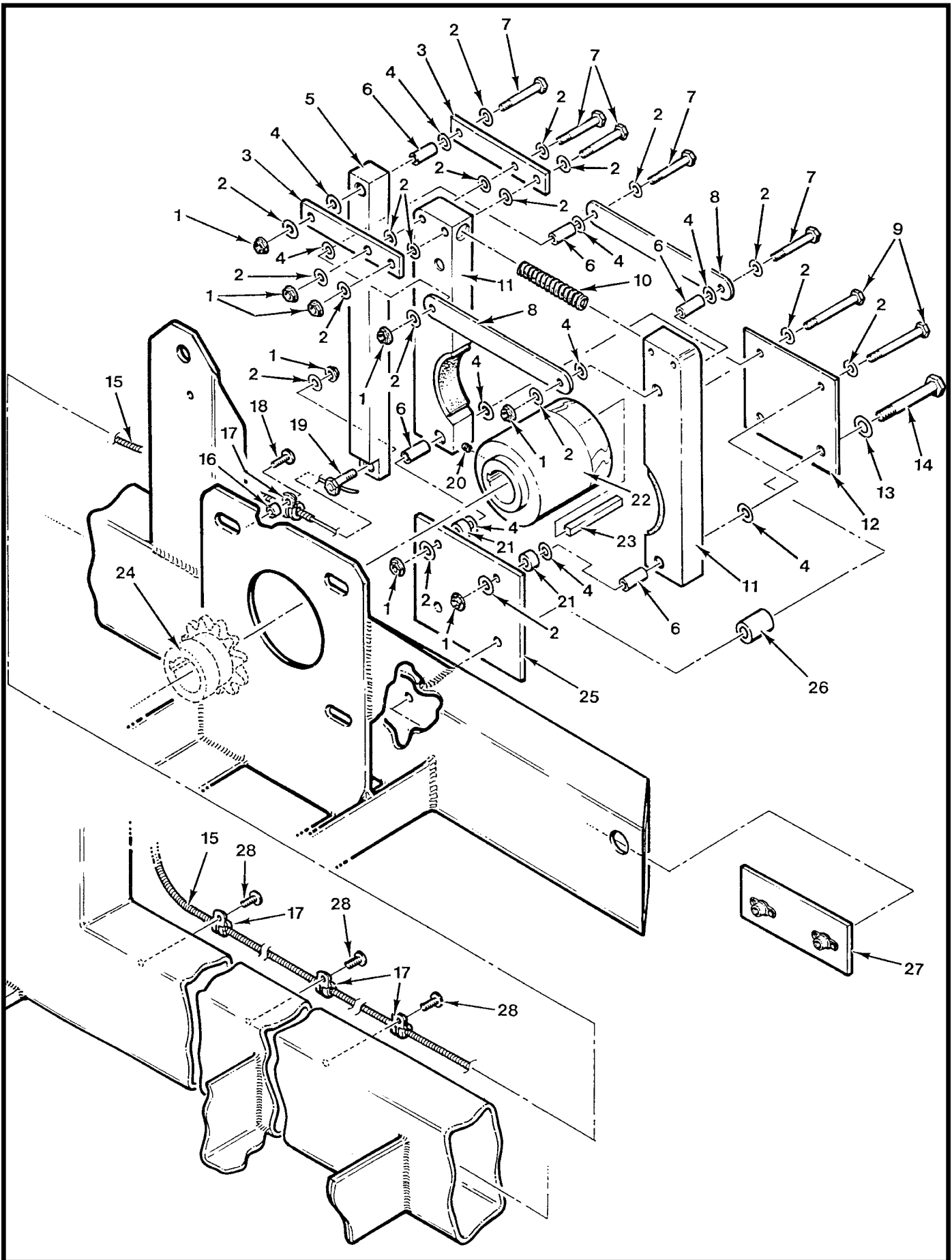


FIGURE AND INDEX NUMBER	PART NUMBER	DESCRIPTION	PARTS AVAIL	QTY PER ASSY
MT950-1 TOW CART - BRAKE COMPONENTS				
3-13-1	MS21042L3	Nut	X	8
2	NAS1149F0332P	Washer	X	19
3	MT945-3	Plate	X	2
4	NAS1149D0316J	Washer	X	10
5	MT945-5	Lever	X	1
6	MT920-2	Spacer	X	5
7	NAS6603-13	Bolt	X	5
8	D113-1	Link	X	2
9	NAS6603-18	Bolt	X	2
10	D774-4	Spring (alternate part no. C0420-063-2000S)	X	1
11	MT945-1	Arm Assembly	X	2
12	MT945-6	Bracket	X	1
13	NAS1149F0432P	Washer	X	2
14	NAS6604-22	Bolt	X	2
15	MT943-2	Brake Control	X	1
16	A130-39	Spacer	X	1
17	MS21919WDG2	Clamp	X	4
18	MS27039C1-11	Screw	X	1
19	A462-4	Fitting	X	1
20	52025	Set Screw	X	1
21	A130-54	Spacer	X	2
22	MT945-7	Drum	X	1
23	98870A370	Key	X	1
24	R5364	Sprocket	X	1
25	MT945-8	Bracket	X	1
26	A130-43	Spacer	X	2
27	MT945-9	Back Assembly	X	1
28	MS27039C1-06	Screw	X	3

NOTES

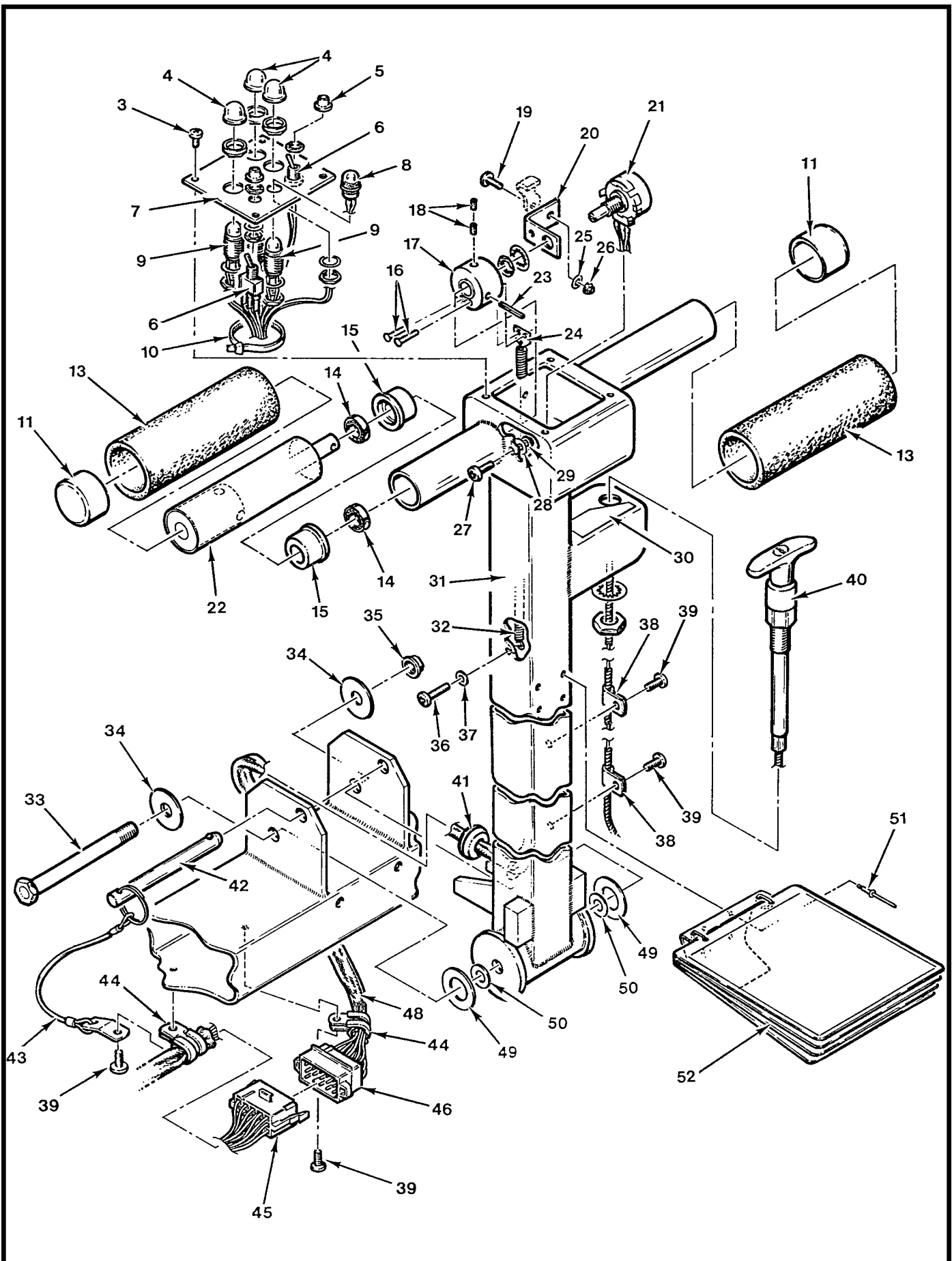


FIGURE AND INDEX NUMBER	PART NUMBER	DESCRIPTION	PARTS AVAIL	QTY PER ASSY
MT950-1 TOW CART - HANDLE ASSEMBLY				
3-15-1	MT905-2	Handle Assembly (Includes items 2, 3, 11 thru 20, 22 thru 32, 36 thru 41, 46, 51, and 52.)	X	1
2	MT923-4	Wire Harness Assembly (Includes items 4 thru 10, 21, 47, 48, and all wires and heat shrink; assembled.)	X	1
	MT923-2	Wire Harness Assembly (Ref, superseded by MT923-4 Harness Assembly. Contact RHC Customer Service for replacement.)	X	1
3	MS35206-227	Screw	X	4
4	N-3030	Boot	X	3
5	N-5032-B	Boot	X	2
6	B300-1	Switch	X	2
7	MT918-2	Cover	X	1
8	B198-1	Light	X	1
	B196-21	Lamp	X	1
9	8532-T-C-Q-E-2	Switch	X	3
10	MS3367-4-9	Ty-Rap	X	1
11	A959-1	Cap (install using item 12)	X	2
12	B270-15	Adhesive	X	A/R
13	A601-1	Grip (install using item 12)	X	2
14	MT905-3	Bearing	X	2
15	MT911-4	Plug	X	2
16	MS20426AD3	Rivet	X	2
17	MT911-1	Stopper	X	1
18	52025	Set Screw	X	2
19	MS35206-228	Screw	X	1
20	MT930-1	Bracket	X	1
21	RV4NAYSD502A	Potentiometer	X	1
22	MT919-1	Grip Assembly	X	1
23	MS16562-36	Spring Pin	X	1
24	MT911-3	Arm	X	1
25	NAS620-6	Washer	X	1
26	MS21042L06	Nut	X	1
27	MS27039C0808	Screw	X	1

NOTES

Continues

FIGURE AND INDEX NUMBER	PART NUMBER	DESCRIPTION	PARTS AVAIL	QTY PER ASSY
MT950-1 TOW CART - HANDLE ASSEMBLY (Cont'd)				
3-15-28	NAS1149FN816P	Washer	X	1
29	MS21042L08	Nut	X	1
30	MT935-1	Decal - "Brake, Lock"	X	1
31	MT903-10	Handle (welded assembly)	X	1
32	E0240-037-3500S	Spring	X	1
33	NAS6606-47	Bolt	X	1
34	A478-1	Spring Washer	X	2
35	MS21042L6	Nut	X	1
36	MS35206-247	Screw	X	1
37	B332-42	Washer	X	1
38	AN742-3	Clamp	X	2
39	MS27039C1-06	Screw	X	4
40	MT943-2	Control - Brake (includes washer and nut)	X	1
41	MS35489-40	Grommet	X	1
42	98404A390	Pin	X	1
43	90312A31	Lanyard	X	1
44	MS21919WDG5	Clamp	X	1
45	B263-23	Housing	X	1
	B263-2	Socket	X	11
46	B263-22	Housing	X	1
47	B263-1	Pin	X	11
48	B266-8	Sleeving (0.50 in. dia, expandable)	X	A/R
49	A214-10	Washer	X	2
50	NAS1149F0632P	Washer	X	2
51	NAS9301B-4-03	Rivet	X	4
52	MT926-5	Instruction Assembly (set of four laminated cards)	X	1

NOTES

Intentionally Blank

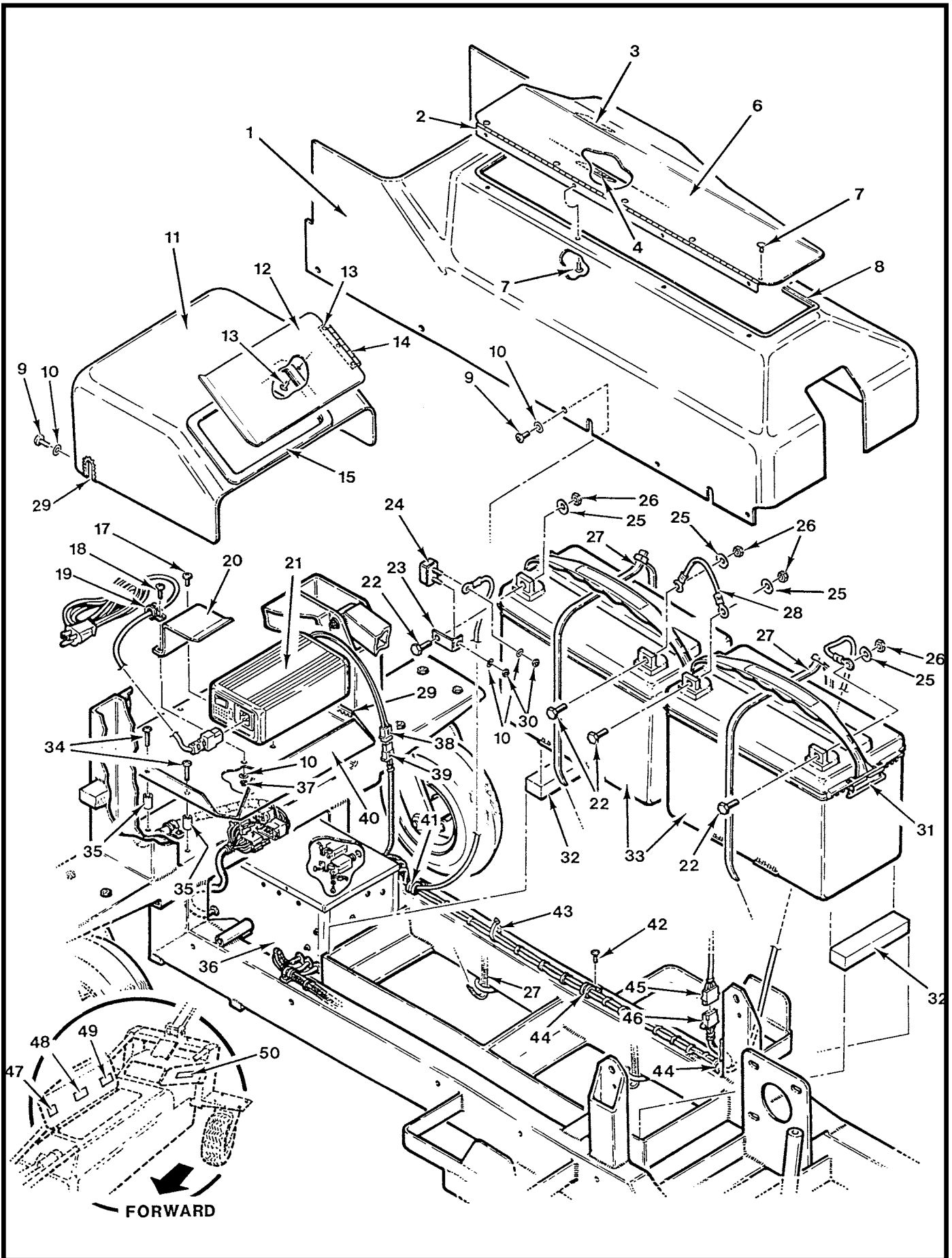


FIGURE AND INDEX NUMBER	PART NUMBER	DESCRIPTION	PARTS AVAIL	QTY PER ASSY
MT950-1 TOW CART - BATTERY & CHARGER INSTALLATION				
3-19-1	MT932-3	Cover Assembly (Incl items 2 thru 8)	X	1
	MT932-4	Cover (cover only)	X	1
2	MT946-4	Hinge	X	1
3	B175-2	Velcro (loop; attach to door using item 5)	X	1
4	B175-1	Velcro (hook; attach to door using item 5)	X	1
5	B270-8qt	Adhesive (one-quart can)	X	1
6	MT946-5	Door	X	1
7	MS20470AD4	Rivet	X	9
8	A226-3	Seal (install using item 16)	X	A/R
9	MS27039C0806	Screw	X	13
10	NAS1149FN816P	Washer	X	17
11	MT931-1	Cover (Incl items 12 thru 15, and 29)	X	1
12	MT946-1	Door	X	1
13	MS20470AD3	Rivet	X	5
14	MT946-3	Hinge	X	1
15	A226-4	Seal (install using item 16)	X	A/R
16	B270-13	Sealant - Silicone (3-oz tube)	X	A/R
17	MS27039C0805	Screw	X	1
18	MS27039C0807	Screw	X	1
19	MS21919WDG3	Clamp	X	1
20	MT938-2	Clip	X	1
21	MT900-7	Charger Assembly (Incl item 38)	X	1
22	—	Bolt	O	4
23	MT939-1	Extension	X	1
24	812040ST	Circuit Breaker	X	1
25	—	Washer	X	4
26	—	Nut	X	4
27	MS3367-6-0	Cable Tie	X	2
28	MT922-5	Harness	X	1
29	MS21266-1N	Grommet (install using item 5)	X	A/R
30	AN315-3R	Nut	X	2

NOTES

Continues

FIGURE AND INDEX NUMBER	PART NUMBER	DESCRIPTION	PARTS AVAIL	QTY PER ASSY
MT950-1 TOW CART - BATTERY & CHARGER INSTALLATION (Cont'd)				
3-19-31	—	Strap	O	1
32	MT906-4	Block	X	2
33	MT955-1	Battery.	X	2
34	MS27039C0818	Screw	X	6
35	90309A032	Spacer	X	6
36	MT970-1	Box Assembly - Electrical Control (Ref, includes items 39 and 46. See also Figure 3-1.)		
37	MS21042L08	Nut	X	2
38	B263-12	Housing	X	1
	B263-3	Pin	X	2
39	B263-13	Housing	X	1
	B263-2	Socket	X	2
40	MT938-1	Tray	X	1
41	MS21919WDG8	Clamp	X	1
42	MS27039C1-06	Screw	X	3
43	MS3367-5-9	Ty-Rap	X	A/R
44	MS21919WDG5	Clamp	X	2
45	MT972-1	Switch Assembly (Ref; see Figure 3-5)		
46	B263-17	Housing	X	1
	B263-2	Socket	X	4
47	C654-45	Decal - "—"	X	1
48	C654-44	Decal - "12V + "	X	1
49	C654-43	Decal - "24V + "	X	1
50	MT935-8	Decal (voltage selector/instructions)	X	1
NOTES				

CHAPTER 4
REVISION LOG

<i>Figure</i>	<i>Title</i>	<i>Page</i>
—	Revision Log	4.1

Intentionally Blank

REVISION LOG

OCT 2011

The MT950 Ground Handling Cart Maintenance Manual and Illustrated Parts Catalog list of effective pages and effective dates are given below. The issue or revision date is in bold at the top of each revision log page. To verify the issue or revision date is current, please visit the company website: www.robinsonheli.com/pubupdts.htm.

<u>Page</u>	<u>Date</u>	<u>Page</u>	<u>Date</u>	<u>Page</u>	<u>Date</u>
i	OCT 2011	3.10	OCT 2011		
ii	OCT 2011	3.11	OCT 2011		
iii	OCT 2011	3.12	OCT 2011		
iv	OCT 2011	3.13	OCT 2011		
v	OCT 2011	3.14	OCT 2011		
vi	OCT 2011	3.15	OCT 2011		
		3.16	OCT 2011		
1.i	OCT 2011	3.17	OCT 2011		
1.ii	OCT 2011	3.18	OCT 2011		
1.1	OCT 2011	3.19	OCT 2011		
1.2	OCT 2011	3.20	OCT 2011		
1.3	OCT 2011				
1.4	OCT 2011	4.i	OCT 2011		
1.5	OCT 2011	4.ii	OCT 2011		
1.6	OCT 2011	4.1	OCT 2011		
1.7	OCT 2011	4.2	OCT 2011		
1.8	OCT 2011				
		A1	OCT 2011		
2.i	OCT 2011	A2	OCT 2011		
2.ii	OCT 2011	A3	OCT 2011		
2.1	OCT 2011	A4	OCT 2011		
2.2	OCT 2011	A5	OCT 2011		
		A6	OCT 2011		
3.i	OCT 2011				
3.0	OCT 2011	B1	OCT 2011		
3.1	OCT 2011	B2	OCT 2011		
3.2	OCT 2011	B3	OCT 2011		
3.3	OCT 2011	B4	OCT 2011		
3.4	OCT 2011	B5	OCT 2011		
3.5	OCT 2011	B6	OCT 2011		
3.6	OCT 2011				
3.7	OCT 2011				
3.8	OCT 2011				
3.9	OCT 2011				

Intentionally Blank

APPENDIX A
ALPHABETICAL INDEX

<i>Figure</i>	<i>Title</i>	<i>Page</i>
—	Alphabetical Index	A3

Intentionally Blank

<u>Alphabetical Index</u>	<u>Page</u>	<u>Item</u>	<u>Alphabetical Index</u>	<u>Page</u>	<u>Item</u>
Actuator	3.1	12	Circuit Breaker, 20 amp	3.3	66
Adhesive (Quart)	3.15	12	Circuit Breaker, 5 amp	3.3	65
Adhesive, Contact (Quart can)	3.19	5	Clamp	3.1	27
Adhesive, Epoxy (2 oz. kit)	3.8	42		3.2	33
Arm	3.15	24		3.2	56
Arm Assy.	3.13	11		3.13	17
Arm Assy., Long	3.7	1		3.16	38
Back Assy.	3.13	27		3.16	44
Ball	3.7	22		3.19	19
Ball Bearing	3.1	18		3.2	41
	3.1	25		3.2	44
Bar	3.8	35	Clip	3.19	20
Battery, 12V	3.2	33	Collar	3.5	4
Bearing	3.2	36	Connecting Link	3.11	13
	3.11	17	Cover	3.7	12
	3.15	14		3.15	7
Black Vinyl Cap	3.7	10		3.19	1
Block	3.2	32	Cover Assy.	3.19	1
Bolt	3.1	3	Cover Assy., Aft	3.19	11
	3.1	16	Cradle	3.7	26
	3.2	42	Decal, + 12V	3.2	48
	3.5	8	Decal, + 24V	3.2	49
	3.7	7	Decal, -	3.2	47
	3.8	29	Decal, Brake Lock	3.16	30
	3.11	7	Decal, Charger Voltage...	3.2	50
	3.13	7	Decal, R22	3.8	44
	3.13	9	Decal, R44	3.8	43
	3.13	14	Door	3.19	6
	3.16	33		3.19	12
Boot, Push Button	3.15	4	Drum	3.11	4
Boot, Toggle	3.15	5		3.13	22
Box Assy., Electrical	3.3	67	Extension	3.19	23
	3.2	36	Fitting	3.13	19
Box Assy., Electrical Control	3.3	67	Focused Light	3.8	40
Bracket	3.5	3	Grip	3.15	13
	3.13	12	Grip Assy.	3.8	31
	3.13	25		3.15	22
	3.15	20	Grommet	3.2	55
Brake Control	3.13	15		3.5	2
	3.16	40		3.7	6
Cap Screw	3.1	9		3.7	14
Cap Screw Bolt	3.1	23		3.16	41
	3.2	43		3.19	29
Cap, Collective, LH	3.15	11	Ground Handling Tow Cart,		
Cap, Light	3.8	38	Universal	3.1	1
Card Assy.	3.16	52	Handle Assy.	3.1	2
Castered Wheel & Tire	3.1	8		3.15	1
Chain Assy.	3.11	5	Handle Weldment	3.16	31
Charger Assy.	3.19	21	Harness Assy.	3.7	15
Circuit Breaker	3.19	24	Harness Assy., Light	3.8	41

<u>Alphabetical Index</u>	<u>Page</u>	<u>Item</u>	<u>Alphabetical Index</u>	<u>Page</u>	<u>Item</u>
Harness Assy., Solenoid	3.7	15		3.13	1
Hinge	3.2	48		3.15	26
	3.19	2		3.15	26
	3.19	14		3.15	29
Housing	3.1	29		3.16	35
	3.2	30		3.19	30
	3.3	60		3.2	37
	3.3	61	Pad	3.8	36
	3.3	63	Pin	3.2	30
	3.3	64		3.3	61
	3.3	70		3.3	64
	3.5	14		3.5	14
	3.5	16		3.7	17
	3.7	4		3.16	47
	3.7	5		3.16	42
	3.7	17		3.2	38
	3.16	45	Plate	3.13	3
	3.16	46	Plug	3.15	15
	3.2	38	Potentiometer	3.15	21
	3.2	39	Retaining Ring	3.11	16
	3.2	46	Rivet	3.16	51
Hub	3.11	19	Safety Wire, Roll (0.032 in. dia.)	3.11	24
	3.11	27	Screw	3.2	34
Inner Tube Replacement	3.11	28		3.2	51
Key	3.13	23		3.2	52
Lamp, Clear	3.15	8		3.3	68
Lanyard	3.16	43		3.5	9
Lever	3.13	5		3.8	37
Light, Amber	3.15	8		3.13	18
Link	3.13	8		3.13	28
Link, Offset	3.11	10		3.15	3
Lock Washer	3.2	41		3.15	19
	3.16	37		3.15	27
Mirror	3.2	50		3.16	36
Mirror Assy.	3.2	50		3.16	39
Motor Assy.	3.2	45		3.19	9
	3.11	1		3.19	17
Nut	3.1	7		3.19	18
	3.1	11		3.2	34
	3.1	13		3.2	42
	3.1	22	Screw, Socket Cap	3.7	20
	3.2	38		3.11	23
	3.2	44	Seal	3.19	15
	3.2	54	Seal, Vent Door	3.19	8
	3.5	6	Sealant (3 oz. tube)	3.19	16
	3.5	12	Self-Locking Pin	3.7	25
	3.7	9	Set Screw	3.5	5
	3.8	30		3.11	2
	3.8	33		3.13	20
	3.11	9		3.15	18

<u>Alphabetical Index</u>	<u>Page</u>	<u>Item</u>	<u>Alphabetical Index</u>	<u>Page</u>	<u>Item</u>
Shaft	3.1	20	Tray	3.3	59
	3.11	18		3.2	40
Shaft Collar	3.7	23	Ty-Rap	3.2	32
Sleeve Weldment	3.7	24		3.2	46
Sleeving, 1/2 in. Expandable	3.3	62		3.7	3
	3.16	48		3.7	16
Sleeving, 1/4 in. Expandable	3.1	28		3.15	10
Socket	3.1	29		3.19	27
	3.3	60		3.2	43
	3.3	63	Valve Extension	3.11	25
	3.3	70		3.11	25
	3.5	16		3.11	25
	3.7	19	Valve Stem	3.11	21
	3.16	45	Velcro Hook Tape, 1 in., Black	3.19	4
	3.2	39	Velcro Loop Tape, 1 in., Black	3.19	3
	3.2	46	Washer	3.1	4
Solenoid Assy.	3.7	13		3.1	5
	3.7	13		3.1	10
	3.7	13		3.1	14
Spacer	3.1	19		3.1	15
	3.1	26		3.1	21
	3.2	35		3.1	24
	3.2	37		3.1	6
	3.3	58		3.2	39
	3.5	13		3.2	40
	3.7	2		3.2	53
	3.13	6		3.5	7
	3.13	16		3.5	10
	3.13	21		3.7	8
	3.13	26		3.8	28
	3.2	35		3.8	32
Speed Reducer	3.2	47		3.8	34
Spirap, 1/2 in.	3.2	57		3.11	8
Spring	3.13	10		3.13	2
	3.16	32		3.13	4
Spring Pin	3.15	23		3.13	13
Spring Washer	3.16	34		3.15	25
Sprocket	3.11	3		3.15	28
	3.11	22		3.16	50
	3.13	24		3.19	10
Stopper	3.15	17	Weldment	3.1	17
Switch	3.5	11		3.2	31
	3.15	9		3.5	1
Switch Assy.	3.3	69		3.8	27
	3.5	15		3.8	39
	3.7	11		3.11	6
	3.15	6	Wire	3.7	18
	3.2	45	Wire Harness Assy.	3.2	57
Thrust Washer	3.16	49		3.8	41
Tire	3.11	26		3.15	2

Alphabetical IndexPage ItemAlphabetical IndexPage Item3.15 2
3.19 28

APPENDIX B
NUMERICAL INDEX

<i>Figure</i>	<i>Title</i>	<i>Page</i>
—	Numerical Index	B3

Intentionally Blank

<u>Numerical Index</u>	<u>Page</u>	<u>Item</u>	<u>Numerical Index</u>	<u>Page</u>	<u>Item</u>
A130-39	3.13	16	B263-68	3.2	30
A130-43	3.13	26	B266-4	3.1	28
A130-54	3.13	21	B266-8	3.3	62
A214-10	3.16	49		3.16	48
A214-6	3.1	6	B270-13	3.19	16
A226-3	3.19	8	B270-15	3.15	12
A226-4	3.19	15	B270-8qt	3.19	5
A462-4	3.13	19	B270-9	3.8	42
A478-1	3.16	34	B297-20	3.3	66
A601-1	3.15	13	B297-5	3.3	65
A647-12	3.1	18	B300-1	3.15	6
A959-1	3.15	11	B332-42	3.16	37
B161-8	3.2	57	B332-45	3.2	41
B175-1	3.19	4	C647-13	3.1	25
B175-2	3.19	3	C654-43	3.2	49
B196-21	3.15	8	C654-44	3.2	48
B198-1	3.15	8	C654-45	3.2	47
B208-1	3.7	22	D113-1	3.13	8
B227-2	3.7	11	D774-4	3.13	10
B263-1	3.3	61	MT900-3	3.2	45
	3.3	64		3.11	1
	3.5	14	MT900-7	3.19	21
	3.7	17	MT903-10	3.16	31
	3.16	47	MT904-2	3.7	13
B263-12	3.2	38	MT904-3	3.7	12
B263-13	3.2	39	MT904-4	3.7	13
B263-16	3.5	14	MT905-2	3.1	2
	3.7	17		3.15	1
B263-17	3.3	70	MT905-3	3.15	14
	3.5	16	MT906-4	3.2	32
	3.2	46	MT909-1	3.7	24
B263-18	3.3	61	MT909-5	3.7	19
	3.7	4	MT910-2	3.7	18
B263-19	3.3	60	MT911-1	3.15	17
	3.7	5	MT911-3	3.15	24
B263-2	3.3	60	MT911-4	3.15	15
	3.3	63	MT913-1	3.11	22
	3.3	70	MT914-1	3.11	5
	3.5	16	MT914-3	3.11	13
	3.16	45	MT914-5	3.11	10
	3.2	39	MT915-3	3.5	3
	3.2	46	MT915-4	3.5	4
B263-22	3.16	46	MT918-2	3.15	7
B263-23	3.16	45	MT919-1	3.8	31
B263-24	3.3	64		3.15	22
B263-25	3.3	63	MT920-10	3.2	35
B263-3	3.2	38	MT920-11	3.2	37
B263-55	3.2	30	MT920-12	3.1	26
B263-56	3.1	29	MT920-13	3.5	13
B263-67	3.1	29	MT920-2	3.13	6

<u>Numerical Index</u>	<u>Page</u>	<u>Item</u>	<u>Numerical Index</u>	<u>Page</u>	<u>Item</u>
MT920-4	3.7	2	MT959-3	3.11	19
MT922-2	3.8	41	MT962-1	3.1	19
MT922-5	3.19	28	MT962-2	3.1	20
MT923-2	3.15	2	MT969-2	3.7	15
MT923-4	3.15	2	MT970-1	3.3	67
MT926-5	3.16	52		3.2	36
MT928-7	3.8	39	MT972-1	3.3	69
MT930-1	3.15	20		3.5	15
MT931-1	3.19	11		3.2	45
MT932-3	3.19	1	MT972-2	3.8	41
MT932-4	3.19	1	MT972-3	3.7	15
MT933-2	3.2	50	MT972-4	3.2	57
MT933-4	3.2	48	MT972-5	3.7	13
MT933-5	3.2	50	MT975-1	3.3	67
MT935-1	3.16	30	MT996-1	3.2	47
MT935-10	3.8	43	MT997-1	3.8	27
MT935-8	3.2	50	MT997-3	3.8	35
MT935-9	3.8	44	MT997-6	3.7	26
MT936-3	3.11	26	MT999-1	3.1	12
MT936-4	3.11	28	R5364	3.11	3
MT938-1	3.3	59		3.13	24
	3.2	40	07DU12	3.2	36
MT938-2	3.19	20	1.500-16	3.7	10
MT939-1	3.19	23	21FKF-616	3.1	22
MT940-1	3.8	38	52025	3.5	5
MT943-2	3.13	15		3.13	20
	3.16	40		3.15	18
MT945-1	3.13	11	57485K62	3.7	23
MT945-3	3.13	3	6241-G	3.11	25
MT945-5	3.13	5	6241-J	3.11	25
MT945-6	3.13	12	6241-M	3.11	25
MT945-7	3.11	4	812040ST	3.19	24
	3.13	22	8532-T-C-Q-E-2	3.15	9
MT945-8	3.13	25	86501970	3.11	7
MT945-9	3.13	27	90289A353	3.11	2
MT946-1	3.19	12	90309A032	3.3	58
MT946-3	3.19	14		3.2	35
MT946-4	3.19	2	90312A31	3.16	43
MT946-5	3.19	6	9106PP	3.11	17
MT950-1	3.1	1	91251A029	3.1	9
MT951-1	3.2	31	91259A723	3.1	23
	3.11	6	91772A120	3.5	9
MT952-1	3.1	17	92865A215	3.2	43
	3.5	1	98404A390	3.16	42
MT954-1	3.7	1	98470A130	3.7	25
MT954-4	3.8	34	98870A370	3.13	23
MT954-5	3.8	36	AN315-3R	3.19	30
MT955-1	3.2	33	AN316-6R	3.2	44
MT959-1	3.11	27	AN742-3	3.16	38
MT959-2	3.11	18	AN970-4	3.1	5

<u>Numerical Index</u>	<u>Page</u>	<u>Item</u>	<u>Numerical Index</u>	<u>Page</u>	<u>Item</u>
E0240-037-3500S	3.16	32	MS35206-227	3.15	3
L8017	3.8	40	MS35206-228	3.15	19
MS16562-36	3.15	23	MS35206-247	3.16	36
MS16625-1218	3.11	16	MS35489-1	3.7	14
MS20074-05-05	3.2	42	MS35489-33	3.2	55
MS20995C32	3.11	24	MS35489-4	3.7	6
MS21042L04	3.5	12	MS35489-40	3.16	41
MS21042L06	3.15	26	N-3030	3.15	4
	3.15	26	N-5032-B	3.15	5
MS21042L08	3.2	54	NAS1149D0316J	3.13	4
	3.15	29	NAS1149F0332P	3.5	7
	3.2	37		3.8	28
MS21042L3	3.5	6		3.13	2
	3.8	30	NAS1149F0432P	3.7	8
	3.13	1		3.13	13
MS21042L4	3.1	7	NAS1149F0463P	3.1	4
	3.7	9	NAS1149F0532P	3.1	15
MS21042L5	3.1	13	NAS1149F0563P	3.1	14
MS21042L6	3.2	38	NAS1149F0632P	3.1	21
	3.16	35		3.2	40
MS21266-1N	3.19	29		3.16	50
MS21919WDG2	3.13	17	NAS1149F0663P	3.2	39
MS21919WDG3	3.19	19	NAS1149F0832P	3.1	10
MS21919WDG5	3.16	44	NAS1149F0863P	3.1	24
	3.2	44		3.8	32
MS21919WDG6	3.2	33		3.11	8
MS21919WDG7	3.2	56	NAS1149FN816P	3.2	53
MS21919WDG8	3.1	27		3.15	28
	3.2	41		3.19	10
MS27039C0805	3.8	37	NAS1291-8	3.1	11
	3.19	17		3.8	33
MS27039C0806	3.2	51		3.11	9
	3.19	9	NAS1352-08LE6P	3.7	20
MS27039C0807	3.2	52	NAS1352-4H30P	3.11	23
	3.19	18	NAS557-18B	3.5	2
MS27039C0808	3.15	27	NAS620-4	3.5	10
MS27039C0810	3.3	68	NAS620-6	3.15	25
MS27039C0818	3.2	34	NAS6603-13	3.13	7
MS27039C1-06	3.2	34	NAS6603-16	3.8	29
	3.13	28	NAS6603-18	3.13	9
	3.16	39	NAS6603-31	3.5	8
	3.2	42	NAS6604-10	3.1	3
MS27039C1-11	3.13	18	NAS6604-22	3.13	14
MS3367-4-9	3.7	16	NAS6604-31	3.7	7
	3.15	10	NAS6605-24	3.1	16
MS3367-5-9	3.2	32	NAS6606-47	3.16	33
	3.2	43	NAS9301B-4-03	3.16	51
MS3367-6-0	3.2	46	RV4NAYS502A	3.15	21
	3.19	27	S-7008	3.1	8
MS3367-7-9	3.7	3	TR-413	3.11	21

<u>Numerical Index</u>	<u>Page</u>	<u>Item</u>	<u>Numerical Index</u>	<u>Page</u>	<u>Item</u>
V3-1	3.5	11			