

R44

Page 1 of 2

SERVICE BULLETIN SB-18

DATE: 16 April 1997

TO: All R44 Owners, Operators, and Service Centers

SUBJECT: Pilot's Heater Outlet Air Supply Hose

ROTORCRAFT AFFECTED: R44 Helicopters S/N 0001 through 0317, except 0298, 0301, 0306, 0307, 0311, 0312, 0314 and 0315.

TIME OF COMPLIANCE: Within next 50 flight hours or by 31 May 1997, whichever occurs first.

BACKGROUND: RHC has received one report of the air hose to the pilot's heater outlet shifting and causing interference with the tail rotor control C317-2 bellcrank assembly.

COMPLIANCE PROCEDURE:

1. Reference helicopter serial number and order the following:
R44 Astro: one KI-117 kit
R44 Clipper: one each of MS27039C0807 screw, AN960-8L washer, MS21042L08 nut, and MS21919WDG40 clamp.
2. Slide C444 cover assembly to top of cyclic stick and temporarily secure in place.
3. Remove avionics from mounting trays. Detach intercom system from C641 avionics face and remove avionics face.
4. Remove radio rack (it is not necessary to disconnect airframe wiring from radio trays to remove radio rack).
5. On outside centerline of chin, locate head of MS27039C08 screw approximately 15 inches forward of C794-1 forward belly panel. Measure and mark a point three inches aft and three inches to right of screw head. Using care not to damage heater hose, drill a 0.170 inch diameter hole at the marked point. Remove debris.
6. Refer to Figure 1. Secure heater hose to chin with MS21919WDG48 clamp (MS21919WDG40 clamp for R44 Clipper), MS27039C0807 screw (screw head outside), AN960-8L washer, and MS21042L08 nut as shown. Move tail rotor pedals through full range of travel and verify clearance between hose and tail rotor controls.
7. Install radio rack, avionics face, avionics, and C444 cyclic cover.

Approximate Cost: Labor: 1.0 manhour
Parts: No charge if ordered by 31 May 1997.
Order must include R44 serial number.

THE DESIGN ENGINEERING ASPECTS OF THIS BULLETIN HAVE BEEN SHOWN TO COMPLY WITH THE APPLICABLE FEDERAL AVIATION REGULATIONS, AND ARE FAA APPROVED.

(over)

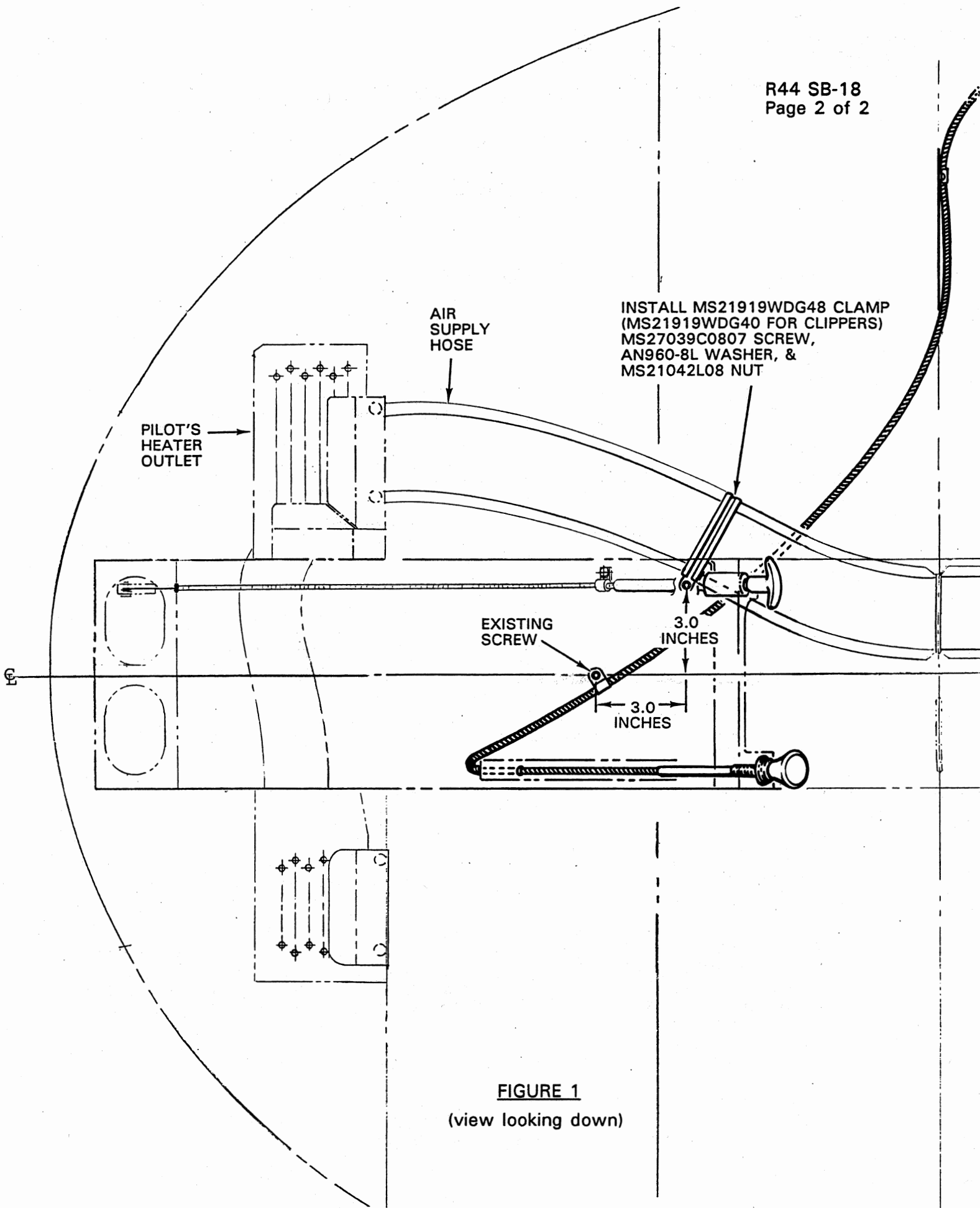


FIGURE 1
(view looking down)